


ASSEMBLY INSTRUCTION

Item#:1618-75917-DKW Wine Cabinet

*** Please make sure you have all parts indicated below prior to assembly.

This unit is heavy and can best be assembled with the help of two or more people

NO	HARDWARE LIST		Q'TY
A		SHELF PIN	12

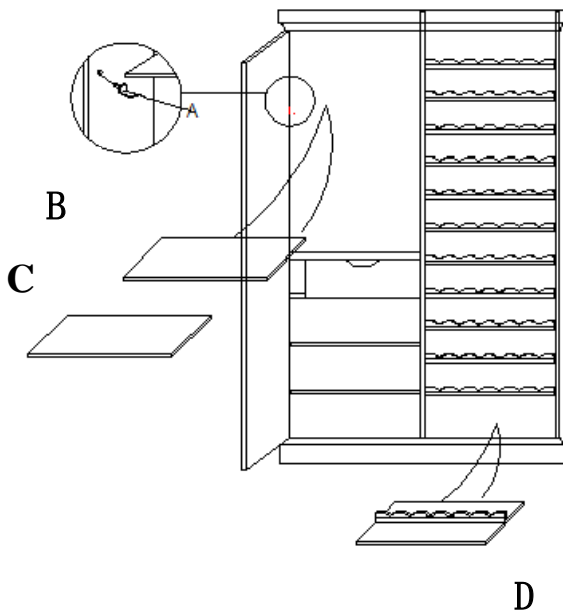
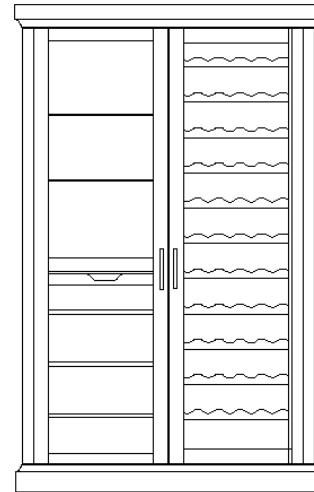


Diagram 1

1. Stick shelf pins (A) to the left upper side of wine cabinet at the positions you desired. (See diagram 1)
2. Place shelves (B&C) on shelf pins (A) securely.
3. Attach wine rack shelf (D) onto the bottom of side box .(See diagram 2)

Caution: Do not over tighten.

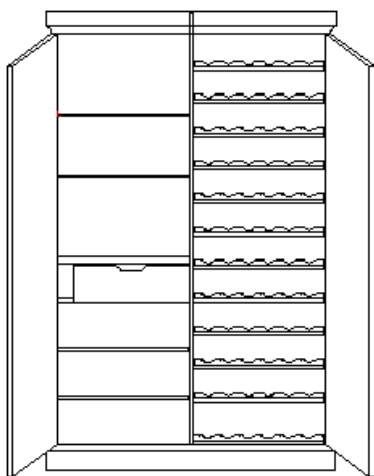


Diagram 2

Cleaning Instruction: Clean finished parts with a mild dishwashing liquid and water solution on a damp cloth.
Polish the finish with soft cloth and an industry recognized furniture polish.