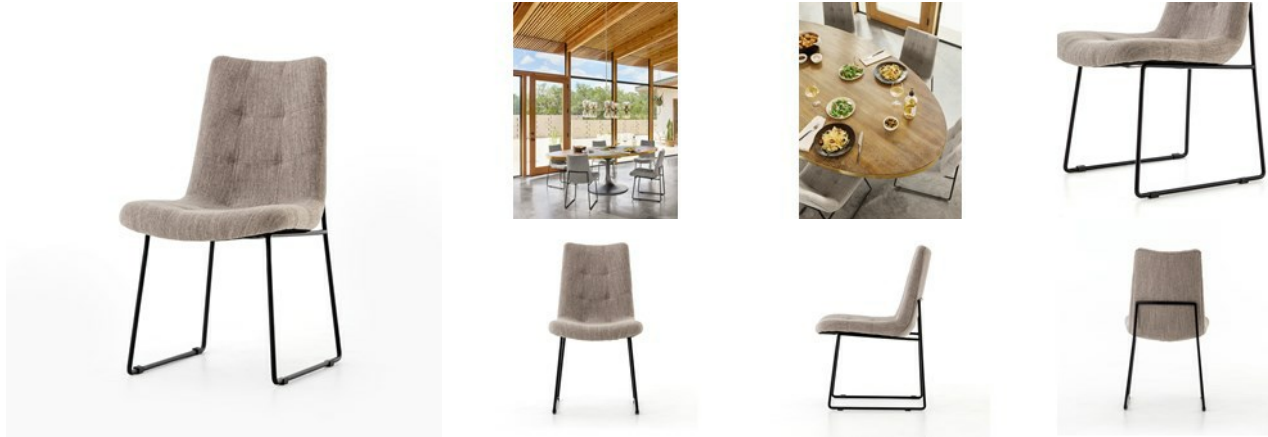


CASH-10004-082P

Camile Dining Chair-Savile Flannel



OVERVIEW

Delicate tufting delivers a classic design touch to modern-minimalist style. Slim iron legs curve in a midnight tone to support flannel-hued high-performance fabric perfect for everyday dining.

Ready for Immediate Shipment: 149

More Arriving Soon: Yes, 1 to 3 weeks

PRODUCT DETAILS

SKU: CASH-10004-082P

Collection: Ashford

Weight: 22.05 lb

Colors: Savile Flannel, Midnight Iron

Materials: Fabric, Metal

Volume: 6.71 cu ft

Overall Dimensions: 18.50" w x 24.75" d x 34.25" h

Seat Depth: 16.54"

Seat Height: 19.09"

COLLECTION OVERVIEW

From the Ashford Collection

Thoughtful details add character to counter, bar or table. Swivel seating is covered in cotton canvas, linen blends and rich leathers. Dark or weathered gray solid wood frames are characterized by slim tapers, soft splays and curved stretchers.