

IDEAL WORKSTATION 4 - DOUBLE BOWL (IWS 4-D) PRODUCT FEATURES

THEGALLEY
■ ■ ■ ■ ■ REINVENT YOUR KITCHEN



Single Bowl shown in photo above.

The IWS 4 Double Bowl features two equal-sized, 10" deep bowls to provide two separate areas for food prep and clean-up. This 1-person Galley Workstation® is smartly-equipped with a 6-piece Culinary Kit in your choice of Natural Golden Bamboo, Graphite Wood Composite, Exclusive Gray Resin, or Designer White Resin.

IWS-4-D FEATURES

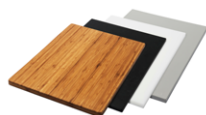


- 1 Person Double Bowl Workstation
- Min Cabinet Size 48" (120cm)
- 16 Gauge, Angel Finish, Stainless Steel, TrueEdge, 10" Depth
- 1 Drain Centered in Each Bowl Maximizes Usable Storage Under Basin
- Versatile Double-tier Design for Upper, Lower and Dual-tier Accessories
- Ideal Flow Round Drain Covers Conceal Drains While Still Allowing Water to Flow Into Drains
- Limited Lifetime Warranty, Hand-crafted in the USA

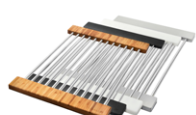
Shown with Graphite Wood Composite Culinary Kit.

6 Piece Culinary Kit included with IWS-4-D:

(1) Upper-tier Cutting Board 12-1/4" x 18"



(1) Upper-tier Drying Rack 12-1/4" x 18"



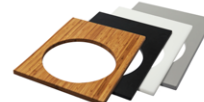
(1) 7.2qt 11" Colander with non-slip handles

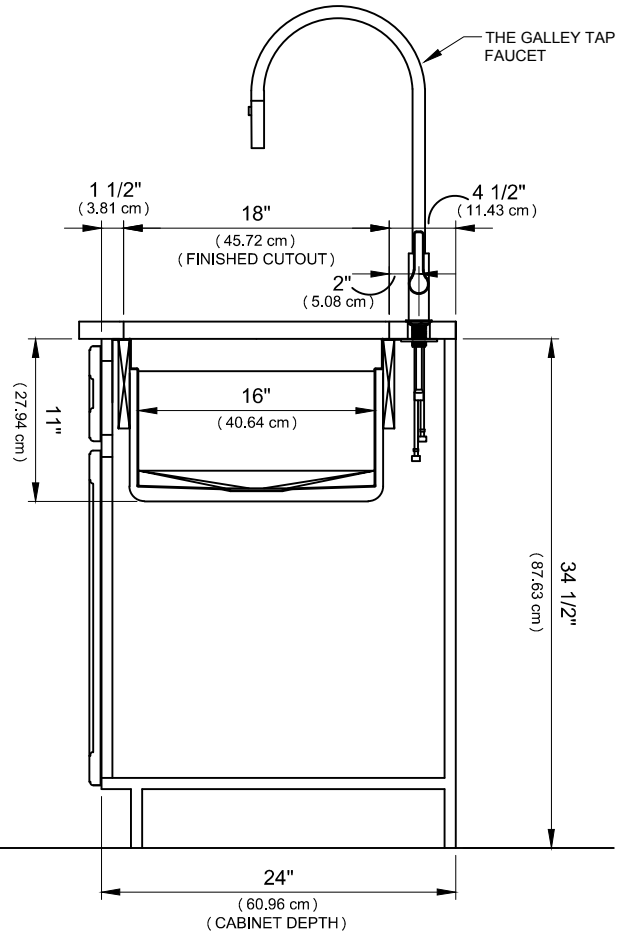
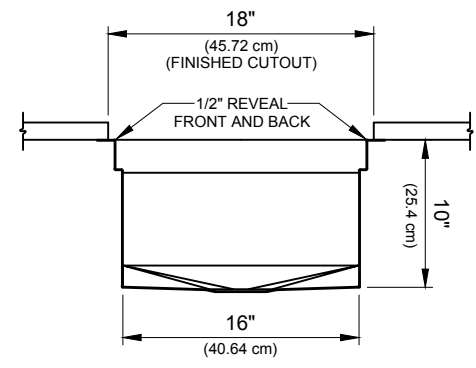
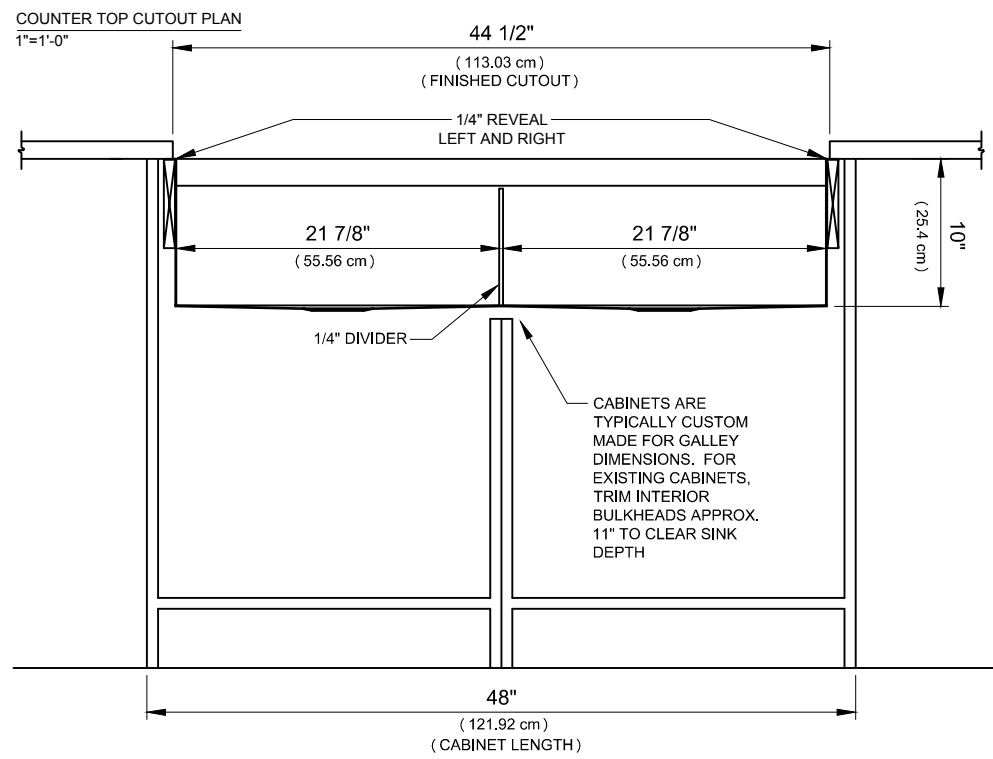
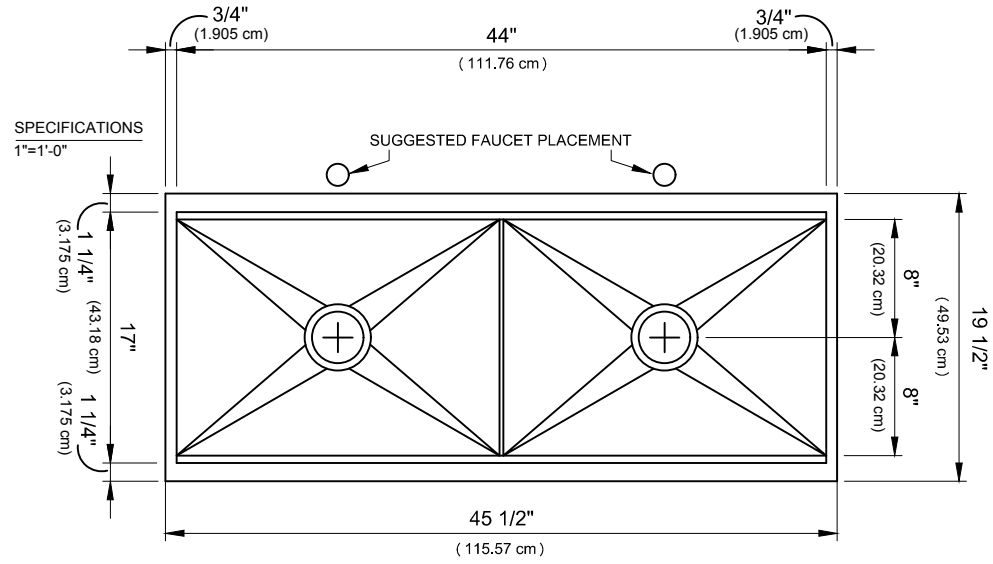


(1) 7.2qt 11" Bowl with lid and non-slip bottom



(2) Lower-tier Platforms 12-1/4" x 17"





STAINLESS STEEL COMPLIANCE ASME A112.19.3-2008/CSA B45.4-08

WE RESERVE THE RIGHT TO MAKE REVISIONS WITHOUT NOTICE IN THE DESIGN OF PRODUCTS OR IN PACKAGING UNLESS THIS RIGHT HAS SPECIFICALLY BEEN WAIVED AT THE TIME THE ORDER IS ACCEPTED.