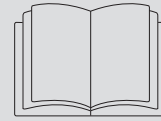


Initial commissioning

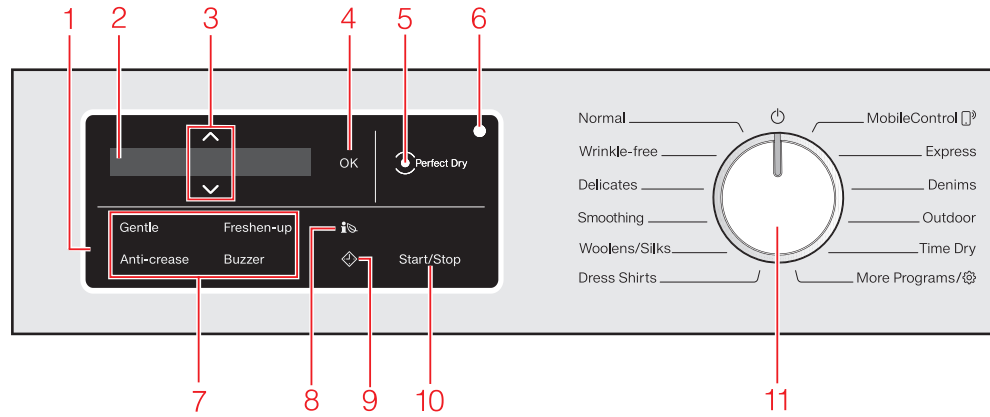
⚠ Before using the tumble dryer for the first time, ensure that it is correctly installed and connected.

If the tumble dryer has not been transported as described in "Installation and connection" then it must be left to stand for at least 1 hour before it is connected to the electricity supply. Otherwise the heat pump can be damaged.



It is **essential** to read the operating instructions.

Operation



Switching on the tumble dryer

- Turn the program selector to a program. The welcome tone will sound and the welcome screen will light up. The display will now guide you through the initial commissioning, which is divided into several steps. For further information please refer to the separate operating instructions supplied.

1 Control field

The control field consists of a display and various sensor buttons.

2 Display

Different values are displayed and/or selected on the display:

3 Sensor buttons $\wedge \vee$

The values in the display can be changed with the $\wedge \vee$ sensor buttons.

4 OK sensor button

Confirm the selected values with the OK sensor button.

5 Perfect Dry indicator \odot

With programs with a selectable drying level, the Perfect Dry system calculates the residual moisture present in the laundry to ensure a precise drying result. The display flashes at the beginning of the program and lights up towards the end of the program.

6 Optical interface

for service technicians.

7 Sensor buttons for extras

You can supplement the drying program with extra options.

8 Sensor button info

You can use the info sensor button to call up an energy consumption forecast for the selected drying program.

9 Sensor button \diamond

The sensor button \diamond starts the delay start function.

10 Start/Stop sensor button

Touching the Start/Stop sensor button starts the selected program or cancels a program that has already been started.

11 Program selector

For selecting programs and for switching off the machine. The tumble dryer is switched on when you select a program, and switched off by turning the program selector to the \odot position.

Operating the sensor buttons

The sensor buttons react to fingertip contact. Selection is possible as long as the respective sensor button is illuminated.

If a sensor button is brightly lit,

this means: currently selected

If a sensor button is dimly lit,

this means: selection possible

Drying

1. Notes on correct laundry care

⚠ Remove foreign objects like detergent dispensing devices from the laundry. They can melt and damage the dryer and the laundry.

- Sort the laundry according to the type of fiber and weave, size, garment care label symbol, and the drying level required.
- Untangle the laundry.
- Check seams and stitching to ensure that padding and linings are intact.
- Fasten duvet covers and pillow cases to prevent small items from being rolled up inside them.
- Fasten hooks and eyes.
- Tie together textile belts and apron ties.
- Sew in or remove underwiring from bras.

2. Selecting a program

- Turn the program selector to a program. The interior drum lighting will come on.

Program selection

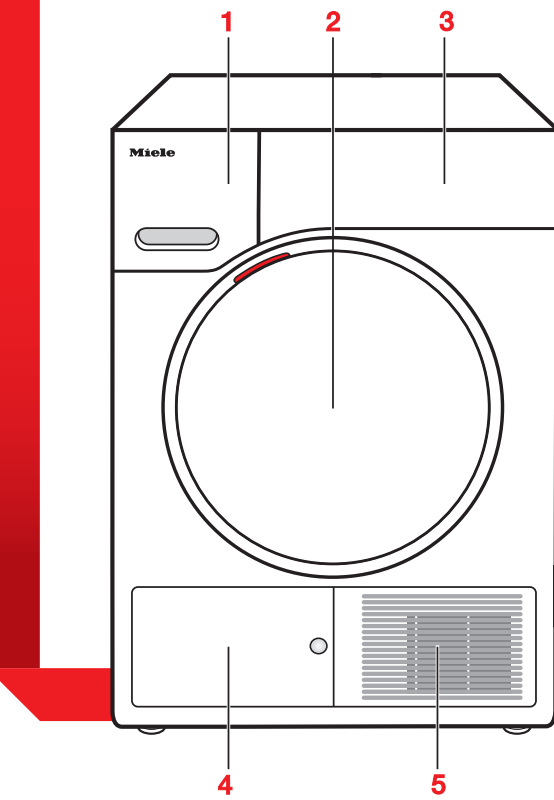
There are three possible ways to select a program:

1. Selecting the standard programs with the program selector dial

- Turn the program selector to the required program. The selected program will be shown in the display. This will then be replaced by the standard display.

2. Selecting more programs by setting the program selector to the "More programs/ info " position and the display.

- Turn the program selector to the *More programs/ info* position. The following will appear in the display: Time Dry
- Touch the \vee/\wedge sensor buttons until the program you want appears in the display.
- Confirm the program with the OK sensor button.



- 1 Condensed water container – empty after every drying program
- 2 Door
- 3 Control panel
- 4 Access panel for the heat exchanger and plinth filter – do not open during drying
- 5 Cold air intake grille – do not obstruct with a laundry basket or other objects

3. Selecting the programs via the MobileControl app program selector position and the Miele@mobile app

- Turn the program selector to the *MobileControl app* position.
- Follow the instructions in the display.
- Touch the "Start/Stop" sensor button. The dryer can now be operated via a mobile device together with the Miele@mobile app.

3. Loading the tumble dryer

- Open the door.
- Unfold the laundry and load loosely into the drum.

⚠ Do not overload the drum. Overloading can cause unnecessary wear and tear to the laundry, give a disappointing drying result and cause more creasing.

⚠ If you are not using a fragrance capsule: The tab must be pushed down completely (see arrow).

⚠ When closing the door, make sure that laundry does not get trapped in the door opening.

- Shut the door with a gentle swing.

4. Selecting program settings

Programs with drying levels

Normal, Wrinkle-free, Delicates, Smoothing, Dress Shirts, Express, Denim, Outdoor, Sportswear, Table Linen/Draperies, Bed linen

The pre-set drying level can be changed if required.

- Touch the \vee or \wedge sensor buttons to change the drying level.

Time-controlled and other programs

Time Dry, Cold Air, Basket

You can change the duration in ten-minute increments.

- Touch the \vee or \wedge sensor buttons to change the duration.

Woolens/Silks, Proofing

The drying result is preset by the dryer and cannot be altered.

Selecting an extra option

- Touch the sensor button for the extra you want. It then lights up brightly.

Freshen up

For removing or reducing odors in clean (dry or damp) clothing.

Gentle

Low temperature for delicate fabrics with the info symbol on the care label, e.g. acrylic garments.

Anti-crease

Helps to prevent creasing if the laundry is not removed immediately after the end of a program.

Buzzer

A buzzer sounds to let you know the program has finished.

info EcoFeedback

You can use the info sensor button to call up an energy consumption forecast for the selected drying program.

- Touch the info sensor button.

The estimated energy consumption levels will be displayed as a bar chart.

\diamond Delay start/SmartStart

Delay start

With the delay start function, you can delay the start of the program. The start of the program can be delayed from 15 minutes up to a maximum of 24 hours.

SmartStart

With the SmartStart function you can define a time period during which your dryer will be started automatically by a signal, for instance to make use of cheaper electricity rates.

5. Starting a program

- Touch the flashing Start/Stop sensor button.

The Start/Stop sensor button will light up and *Drying* will appear in the display.

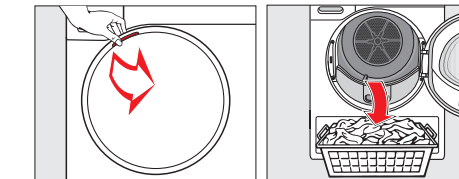
6. Program end – removing the laundry

The program is finished when *End/Anti-crease* or *End* appears. The Start/Stop button light goes out.

- To save energy, 10 minutes after the end of the program the Start/Stop sensor button will begin to flash slowly and the display will go out.
- The tumble dryer switches off automatically.

⚠ Do not open the door before the end of the program.

- Open the door.



- Remove the laundry.

⚠ Check that all items have been removed from the drum. If items are left in the dryer, they could be damaged by overdrying when the dryer is next used.

The inside of the drum lights up so that you don't forget any items of laundry when you empty it.

The drum lighting switches off automatically (energy saving).

- Turn the program selector to \odot .
- Clean the lint filters.
- Close the drum door.
- Empty the condensed water container.

Emptying the condensed water container

Empty the condensed water container after every drying program.

Empty container See info .

will light up in the display if the maximum level of the condensed water container is reached.

To turn the message off: Open and close the door while the dryer is switched on.

- Remove the condensed water container.



- To prevent water running out, keep it in a horizontal position when carrying it. Hold it at the front and towards the back.

- Empty the condensed water container.
- Replace the condensed water container in the dryer.



⚠ Do not drink condensed water. It can cause health problems in people and animals.

Changing the program

You cannot change to another program once a program has started (this prevents unintentional alterations). If you move the program selector, **Cannot be changed** will light up in the display until you move the program selector back to the original program.

Exception: The dryer is switched off by turning the program selector to the \odot position.

You will need to cancel the current program before you can select a new one.

Canceling a program

- Touch the Start/Stop sensor button. Cancel program will light up in the display.
- Confirm with the OK sensor button. As soon as Program canceled lights up:
- Turn the program selector to \odot .

The current program can also be canceled in this way

- Turn the program selector to \odot .
- Select a program.
- Touch the Start/Stop sensor button. The drying cycle begins.

Adding or removing laundry

⚠ Bear in mind that hot steam can escape after the door is opened.

- Pull open the door.
- Add or remove items.
- Close the door.
- Touch the Start/Stop sensor button. The program starts.

Program duration

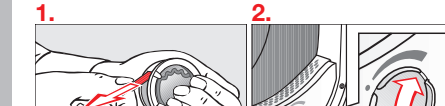
Altering the program sequence can cause the program duration shown in the time display to be adjusted.

Fragrance capsule

Tip: Using a fragrance capsule will add a pleasant fragrance to your laundry.

⚠ Before using a fragrance capsule, please read "IMPORTANT SAFETY INSTRUCTIONS – Using a fragrance capsule (optional accessory)" and "Fragrance capsule" in the operating instructions.

Inserting a fragrance capsule

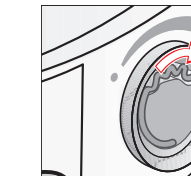


Markers ① and ② must line up with one another.



- Turn the outer ring clockwise a little.

Before drying



The further you open the capsule, the more intense the fragrance.

After drying

To avoid the fragrance escaping needlessly:



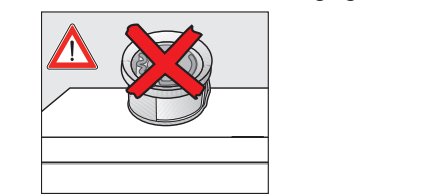
- Turn the outer ring counter-clockwise until marker ② is in position ①.

If you want to dry laundry occasionally without adding fragrance: Remove the fragrance capsule and store it in its original packaging until you want to use it again. See the following section.

Before cleaning the lint filters



- Remove the fragrance capsule (reverse points 3 and 4) and store it in its original packaging.



⚠ Never lay the fragrance capsule down on any surface as the fragrance will spill out.

Program guide

Program	Load (weight of dry laundry)	Laundry type	Extra options
Normal	Full load (17.6 lb)	T-Shirts, underwear, baby clothes, workwear, jackets, covers, aprons, overalls, hand towels, bath towels, bathrobes, bed linen For T-shirts, underwear, baby clothes: do not use <i>Extra dry</i> (laundry can shrink)	Machine iron Hand iron 60 Hand iron 5 Slightly dry Normal Normal+ Extra dry
Wrinkle-free	Half load (8.8 lb)	Workwear, overalls, pullovers, dresses, pants, table linen, leggings	
Delicates	Small load (5.7 lb)	Dress shirts, blouses, lingerie, appliquéd garments	
Smoothing	Very small load (2.2 lb)	Cotton pants, jackets, shirts	
Woolens/Silks	Small load (4.4 lb)	Pullovers, cardigans, socks, leggings	
Dress Shirts	Small load (4.4 lb)	Shirts, blouses	
MobileControl	The Miele@mobile app is used to select the programs and operate the appliance.		
Express	Half load (8.8 lb)	Resilient garments (such as those suitable for the Normal program)	
Denim	Small load (6.6 lb)	Pants, jackets, skirts, shirts	
Outdoor	Small load (5.5 lb)	Outdoor clothing	
Time Dry	Full load (17.6 lb)	Thick jackets, pillows, sleeping bags, blankets	
Table Linen/Draperies	Half load (8.8 lb)	Table linen, drapes, curtains	
Cold Air	Full load (17.6 lb)	Everything	
Proofing	Small load (5.5 lb)	Microfiber fabrics, skiwear, outdoor wear, fine, close weave cotton garments (poplin), table linen/ drapes	
Basket	Maximum weight: 7.7 lb	Prohibited: Proofing agent containing paraffin Bags, shoes, stuffed animals, hats, scarves, gloves, sequined tops	
Sportswear	Small load (6.6 lb)	Only with dryer basket (optional accessory)	
Bed linen	Half load (8.8 lb)	Sportswear Bed linen	

Garment care label symbols

Drying

- ☑ Normal/higher temperature
- ☑ Reduced temperature: Select Gentle (for delicate textiles)
- ☑ Do not tumble dry

Ironing

- ☑ Very hot
- ☑ Hot
- ☑ Warm
- ☑ Do not iron

PROGRAM GUIDE

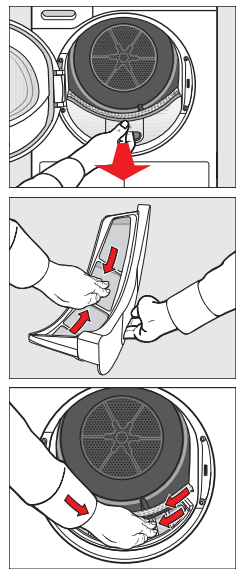
Cleaning and care

Lint filters

Removing visible lint

Clean both lint filters in the door opening after every drying cycle.

- Remove the fragrance capsule (if fitted).

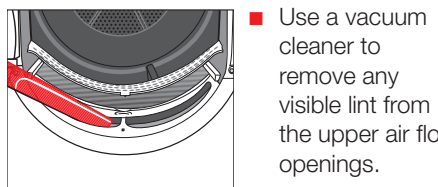
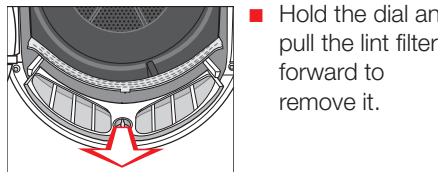
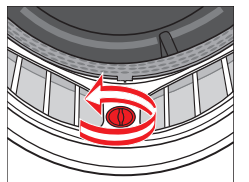


- Push the upper lint filter back into position until it clicks.
- Close the door.

Cleaning the lint filters and air flow openings thoroughly

If the drying duration has become longer or the surface of the filters is visibly compacted with lint, you should carry out the following cleaning procedure.

- Pull the upper lint filter forward to remove it.



- Flush the lint filters through with warm running water.
- Shake out the lint filters thoroughly and then dry them carefully.

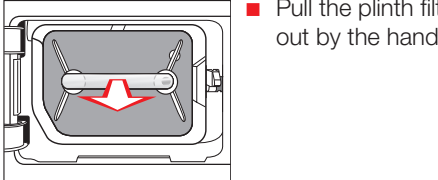
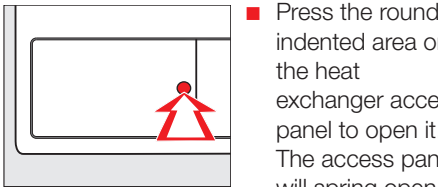
- Ensure the filters are dry before replacing them.

- Refit all of the lint filters and close the door.

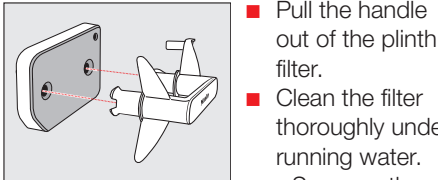
Plinth filter

Only clean the plinth filter when *Clean lint and plinth filter* See lights up.

To turn the message off: Switch the dryer off and then on again. Confirm with OK.

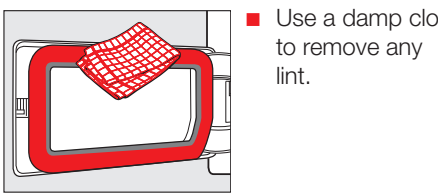


A guide pin in the dryer will come out which prevents the access panel from closing without the plinth filter.



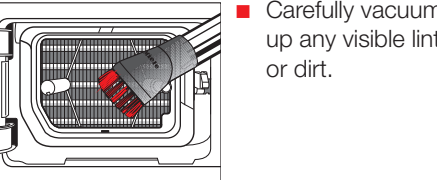
water out of the plinth filter thoroughly.

- The plinth filter must not be replaced dripping wet.

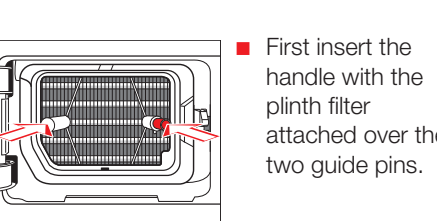
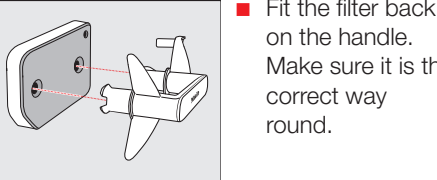


Checking the heat exchanger unit

- Danger of injury! Do not touch the cooling fins with your hands. You could cut yourself.



Refitting the plinth filter



- The word Miele on the handle must be the correct way up.

- Close the heat exchanger access panel.

Frequently asked questions

Some of the messages in the display are more than one line long. Touch the V or A sensor button to read them in full.

Problem/Fault message	Possible cause and solution
lights up after the tumble dryer is switched on and a program cannot be selected	Access via a PIN code has been activated. You must enter the correct PIN code to use the tumble dryer. See "Settings menu – PIN Code" in the operating instructions.
The program is canceled and the following lights up:	The condensed water container is full or there is a kink in the drain hose. Empty the condensed water container. Check the drain hose. To switch off the message: Open and close the door while the dryer is switched on.
At the end of a program the following lights up:	There is a build-up of lint in the airways. See "Cleaning and care" in the operating instructions. Clean the lint filter. Clean the plinth filter. To switch off the message: Confirm with OK.
After a program has been interrupted, the following lights up:	There is a build-up of lint in the airways. See "Cleaning and care" in the operating instructions. Clean the lint filter. Clean the plinth filter. Cleaning the air flow openings. Clean the heat exchanger. To switch off the message: Switch the dryer off and then on again.
End/Cooling down	The program has finished but the laundry has not yet cooled down. Either remove the laundry and spread it out to cool down or leave it in the tumble dryer to cool down during the cooling phase.

Problem/Fault message	Possible cause and solution
The display is in a different language	A different language has been selected in "Settings, Language". Set the language you want. The flag symbol will guide you.
The display remains dark, and the Start/Stop sensor button does not light up or flash	There is no power to the dryer. Check whether the plug is plugged in. Check whether the fuse has tripped. The dryer has switched off automatically to save energy. Turn the program selector to switch the dryer on again.
The laundry is not sufficiently dry	The load consisted of different types of fabric. Finish drying using the <i>Time Dry</i> drying program. Select a more suitable program next time. Tip: You can alter the residual moisture level for some programs. See "Settings menu – Drying levels" in the operating instructions.
Items made of synthetic fibers are charged with static electricity after drying	Synthetic fibers tend to attract static charge. Static charge can be reduced by adding a fabric softener to the final rinse in the washing program.
There is a build-up of lint	Lint is principally the result of friction when garments are being worn and to some extent when they are being washed. Machine drying hardly causes any lint to form. Lint is collected by the lint filter and the plinth filter and can be removed easily. See "Cleaning and care".
You can hear operating noises (buzzing/humming)	This is not a fault. The compressor (heat pump) is operating. No action required. These noises are normal and can be heard when the compressor is operating.

Quick Start Guide
Heat-pump dryer



These short instructions are not a substitute for the operating instructions supplied with the appliance! It is essential to familiarize yourself with the dryer before using it for the first time. Take note of the operating instructions, as well as the "IMPORTANT SAFETY INSTRUCTIONS".