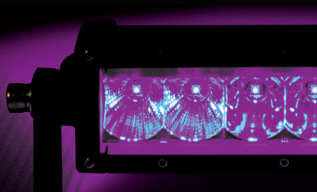


HIGH PERFORMANCE LED LIGHTING

ROGUE4



INSTALLATION MANUAL



THANK YOU FOR YOUR ROGUE⁴ PURCHASE.

PRELIMINARY STEPS

1. Read all instructions carefully and study diagrams before installing lights.
2. Check with state and local authorities for laws governing usage and proper mounting of auxiliary lamps.
3. Disconnect ground connection from battery (marked “-“) to avoid accidental short circuits before attempting to connect electrical wires.
4. Route new wires along existing wiring. Tape as necessary to correct slack.
5. When running wires, keep them away from moving parts.

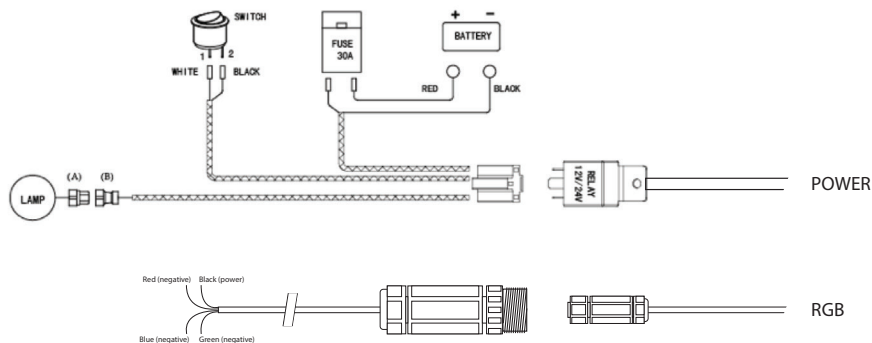
WIRING INSTRUCTIONS

1. Mount switch in a convenient location where it is easily reached from the driver's seat.
2. Wiring: Red “+”, black “-“. Attach the Red wire terminal to positive side “+”, and the black wire terminal to negative side “-” on battery or ground. (Vehicles)
3. Make sure the working voltage (DC12V/24V), choose the corresponding relays. (DC12V/24V)
4. Insert the lamp connector (A) to wiring connector (B)
5. Turn on the switch to make sure if the lamp works. If not, please check carefully if the wiring installing correct.

CAUTION

- Only operate under the specified voltages (DC9-30V)
- This light becomes hot during continuous use. Don't remove the lamp or touch the casing for at least 30 minutes after turning the lamp off.
- Keep heat-sink clean and exposed to maintain air flow.

WIRING

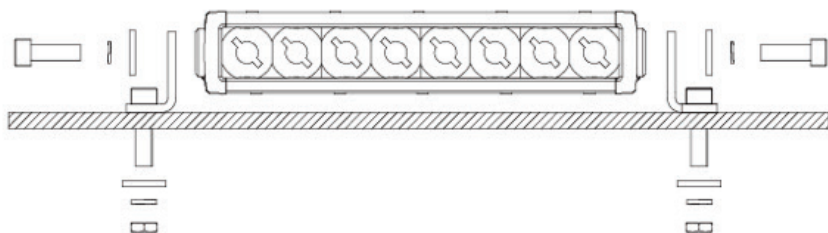


RGB Controller required for full color control

MOUNTING LIGHTS

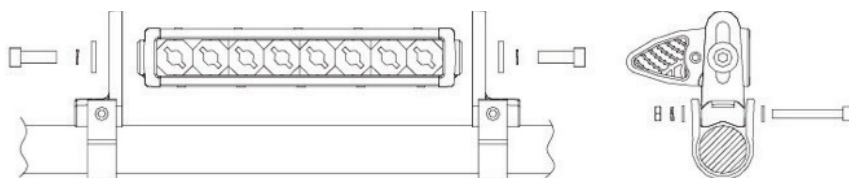
Installation Method Using L bracket Mounts

1. Install the side mount on the lamps and fasten with bolts.
2. Drill M8 bolt holes at the appropriate position of the mounting plate where you would like to fix the base and attach the mounting plate.



Installation Method Using Pipe Mount Adapters

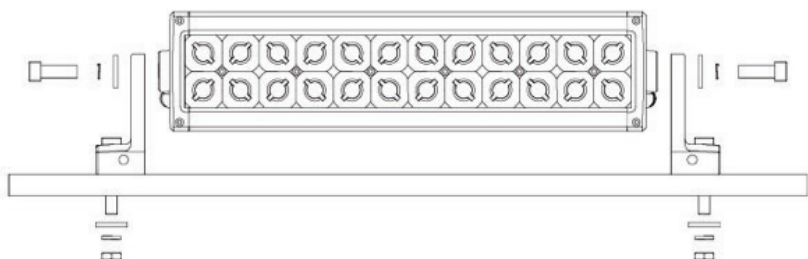
1. Install the side mount on the lamps and fasten with bolts.
2. Attach the clamps onto the roll bar/pipe/tube.
3. Insert the bolt through the clamp, mount, and roll bar then tighten it.



MOUNTING LIGHTS

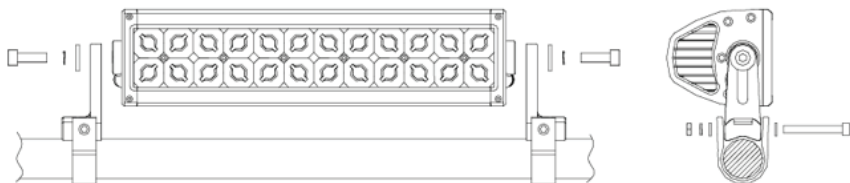
Installation Method 1

1. Install the side mount on the lamps and fasten with bolts.
2. Drill M8 bolt holes at the appropriate position of the mounting plate where you would like to fix the base and attach the mounting plate.



Installation Method 2

1. Install the side mount on the lamps and fasten with bolts.
2. Attach the clamps onto the roll bar/pipe/tube.
3. Insert the bolt through the clamp, mount, and roll bar then tighten it.



ROGUE⁴

LIMITED LIFETIME WARRANTY

WHAT THIS WARRANTY COVERS

This is a “Limited” warranty. This warranty covers any defects in materials and workmanship and warranty only applies to the original purchaser and is not transferable. This warranty is also only valid if the original purchase was made from an authorized Rogue 4 dealer.

HOW LONG COVERAGE LAST

From date of purchase to 1 year - Rogue 4 will fix or replace the product. The customer is responsible for shipping charges to Rogue 4 for repair of the product. Rogue 4 will cover all parts, labor and return shipping to the customer. **After 1 year** - The customer is responsible for all shipping charges to Rogue 4 for repair of the product and labor.

WHAT IS NOT COVERED

This warranty does not cover fading or discoloration caused by exposure to sunlight or chemicals such as ammonia, household bleach, or any cleaning material that contains abrasive substances. Rogue 4 does not cover the cost for removal and re-installation of any kind. This warranty is void and inapplicable if Rogue 4 deems that the product was abused or misused; including but not limited to damage caused by accident, mishandling, improper installation, negligence, normal wear and tear, excessive water or heat damage, freight damage or products that have been altered in any way. Product owned by anyone other than the original purchaser from an authorized Rogue 4 dealer. (The warranty is not transferable and will not apply to products purchased from unauthorized dealers.) Rogue 4 is not responsible for any damages to a consumer’s vehicle or person from a product failure. The warranty is void if Rogue 4 deems the product was installed or used improperly. Rogue 4 shall not be responsible for any incidental or consequential damages, except to the extent provided (or prohibited) by applicable law. This warranty gives you specific legal rights, and you may also have other rights which vary from state.

HOW TO OBTAIN WARRANTY SERVICE

Contact Rogue 4 either by phone at 855-476-4834 or by email at warranty@rogue-4.com. A service representative will assist you in the necessary actions to verify that the problem that you are experiencing is covered under warranty. If it is in fact a warranty issue, Rogue 4 will issue an RA number for tracking purposes and give instructions on sending the product in for evaluation.

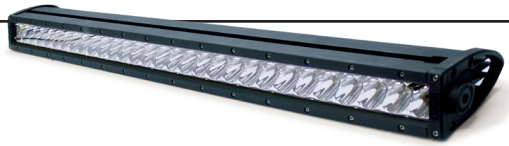
INTERNET WARNING

Rogue 4 products sold on any non authorized web site or internet auction site are void of any and all manufacturer’s warranty. Please contact Rogue 4 at 855-476-4834 or visit our web site at www.rogue-4.com to search for an authorized site and/or an authorized retailer near you.



SIGMA SERIES SINGLE ROW LED RGB LIGHTBARS

Available in Black or White
Sigma 30 shown >



S6



DEPTH 3.4"

HEIGHT 2.2"

BAR WIDTH 6.77"

MOUNT BOSS WIDTH 7.4"

BRACKET WIDTH 8.19"

S10



DEPTH 3.4"

HEIGHT 2.2"

BAR WIDTH 10.71"

MOUNT BOSS WIDTH 11.34"

BRACKET WIDTH 12.13"

S20



DEPTH 3.4"

HEIGHT 2.2"

BAR WIDTH 20.55"

MOUNT BOSS WIDTH 21.18"

BRACKET WIDTH 21.97"

S30



DEPTH 3.4"

HEIGHT 2.2"

BAR WIDTH 30.39"

MOUNT BOSS WIDTH 31.02"

BRACKET WIDTH 31.81"

S40



DEPTH 3.4"

HEIGHT 2.2"

BAR WIDTH 40.24"

MOUNT BOSS WIDTH 40.87"

BRACKET WIDTH 41.66"

S50



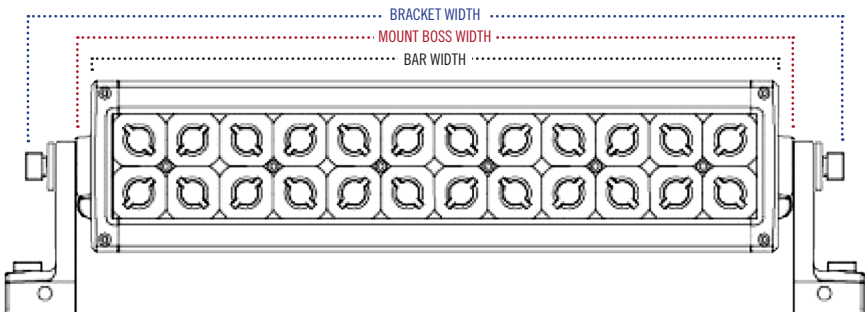
DEPTH 3.4"

HEIGHT 2.2"

BAR WIDTH 50.08"

MOUNT BOSS WIDTH 50.71"

BRACKET WIDTH 51.5"



DELTA SERIES DOUBLE ROW LED RGB LIGHTBARS



Available in Combo or Spot Beam configs
Delta 30 shown >



06



DEPTH 3.53"

HEIGHT 3.23"

BAR WIDTH 6.93"

MOUNT BOSS WIDTH 7.56"

BRACKET WIDTH 8.35"

010



DEPTH 3.53"

HEIGHT 3.23"

BAR WIDTH 10.94"

MOUNT BOSS WIDTH 11.57"

BRACKET WIDTH 12.36"

020



DEPTH 3.53"

HEIGHT 3.23"

BAR WIDTH 20.98"

MOUNT BOSS WIDTH 21.61"

BRACKET WIDTH 22.4"

030



DEPTH 3.53"

HEIGHT 3.23"

BAR WIDTH 31.02"

MOUNT BOSS WIDTH 31.65"

BRACKET WIDTH 32.44"

040



DEPTH 3.53"

HEIGHT 3.23"

BAR WIDTH 41.06"

MOUNT BOSS WIDTH 41.69"

BRACKET WIDTH 42.48"

050



DEPTH 3.53"

HEIGHT 3.23"

BAR WIDTH 51.1"

MOUNT BOSS WIDTH 51.73"

BRACKET WIDTH 52.52"





PROUDLY DESIGNED
IN THE U.S.A.



ROGUE 4.COM / 877-938-7757