

Jeep Wrangler Adjustable Rear Vision System for Factory Display Radios, 2007 – Current (Kit # 9002-8847)

Items Included in the Kit

Camera
Chassis Harness
Power Harness
Jumper Harness
Program Module
Zip lock bag with 15 Wire Ties & 3 Push Nuts
Camera Extension Bracket
These Instructions

Required Tools & Supplies

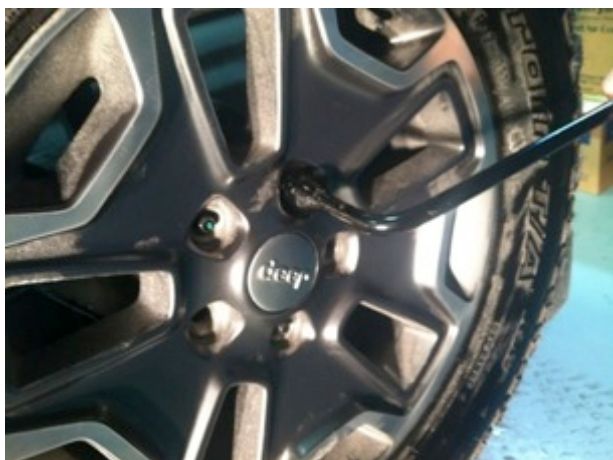
T15 & T20 Torx Bits
7mm & 10mm Sockets
Phillips Screwdriver
3/8" Wrench or Socket Drive
Plastic Trim Removal Tool
Soldering Iron, Solder, & Heat Shrink Tubing
(RECOMMENDED) or T-taps as an alternate
splicing method
Electrical Tape

Please read so you do not VOID the warranty:

**If the camera harness is run through the center on the
camera bracket, it will cut the camera harness. This will
void the warranty on the camera.**

Install Camera

Step 1: Loosen lug nuts to remove spare tire.

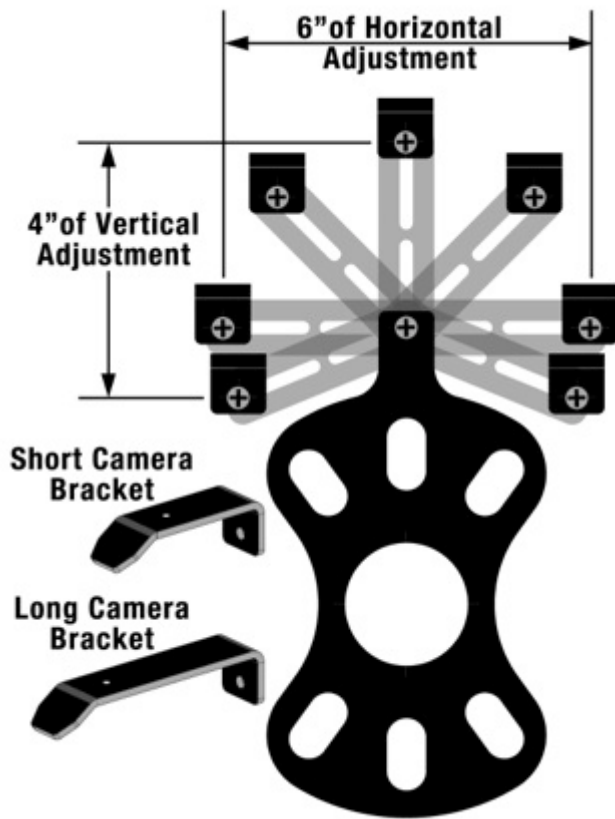


Step 2: Slide Camera on studs placing harness end inside of tire carrier. ***Do not run harness through the camera bracket opening.***

Step 3: Adjust Camera head to fit your specific wheel. Bracket is shipped in factory wheel configuration.



Adjustment Bracket for Camera Clearance using Phillips Screwdriver and 3/8" Wrench or Socket Drive



Note: Short Bracket has been designed for Factory offset wheels. Use the Long Bracket for wheels with larger offsets.

Step 4: Remove spare tire and slide (3) supplied Push Nuts on the studs.



Step 5: Reinstall spare tire.

INSTALLATION INSTRUCTIONS

Install Chassis Harness

Step 6: Insert connector from Camera connector through the rear gate vent behind tire carrier.



Step 7: Using a plastic trim removal tool, remove interior panels on inside of rear gate.



Step 8: Pull harness through the rear gate openings.

INSTALLATION INSTRUCTIONS

Step 9: Use supplied Wire Ties to secure Chassis Harness to existing harness.



Step 10: Use supplied Wire Ties to secure Chassis Harness to existing harness.



Step 11: Use supplied Wire Ties to secure Chassis Harness to fabric factory wire cover. CAUTION: Leave enough slack to allow gate to open fully.



Step 12: Use a T20 Torx bit to remove subwoofer box.



Step 13: Using a plastic trim removal tool, pry off rear seat belt closeout.



Step 14: Pull out subwoofer box slightly to gain access to access panel.



Step 15: Pull out subwoofer box slightly to gain access to run Chassis Harness along existing harness

Step 16: Pull back carpet and continue running Chassis Harness forward.



INSTALLATION INSTRUCTIONS

Step 17: Run Chassis Harness under B-pillar cover to passenger door sill. Use a plastic trim removal tool to remove the (2) plastic push pins and remove passenger sill plate/kick panel.



Step 18: Remove rubber bin insert from top of dash.



Step 19: Remove 7mm bolt .



Step 20: Using a plastic trim removal tool, remove window switch panel.



Step 21: Disconnect harness from window switches.



Step 22: Remove 7mm bolt.



INSTALLATION INSTRUCTIONS

Step 23: Remove driver knee bolster cover.



Step 24: Remove (2) 7mm bolts on both sides of the steering column.



Step 25: Remove center stack/cluster surround.

Step 26: Remove glove box for access and run Mirror Harness toward center of dash.



Step 27: Using a plastic trim removal tool, remove HVAC panel.

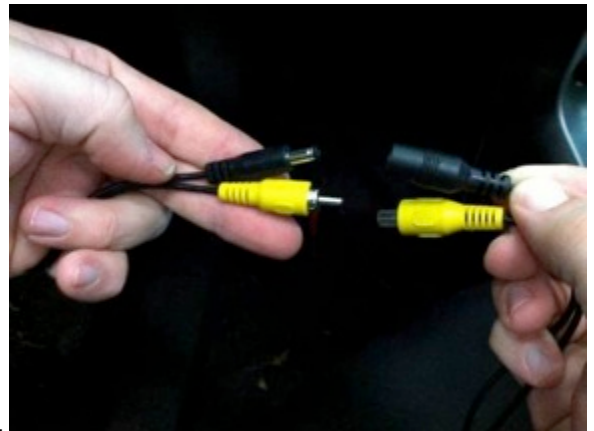


Step 28: Connecting Power harness.

Splice Red power wire to Blue/Red wire on back of power point and Splice Black Ground to Black/White wire. RECOMMENDED: Use solder and cover with heat shrink tubing or use T-taps as an alternate connection method.



Step 29: Connect Chassis Harness to Power Harness



INSTALLATION INSTRUCTIONS

Step 30: Plug the Power Harness RCA connector into provided jumper harness.



Step 31: Insert the white 22-pin connector into the back of radio.



Programing Instructions

PLEASE NOTE: These modules are VIN locked for single use.

- With the module not plugged in, key on the ignition and wait 10 seconds for the chimes and lights to stop flashing.
- Plug module into OBDII port, located under the dash on the driver's side, and wait to hear "honk honk". Programming is completed.
- Unplug the module from the OBDII port.



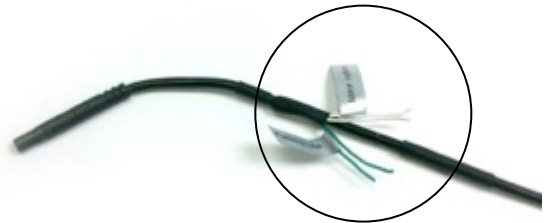
Step 32: Test the system. Start vehicle and shift into Reverse in order to check that all connections were made properly. If all of the connections are correct you will see the camera image displayed on the factory display screen. To enable or disable the camera input, select from among rear vision options in radio settings.

Step 33: Reassemble vehicle. Follow your disassembly steps in reverse order, taking care not to bind the harness wiring when reinstalling trim.

NOTE: This camera has parklines or non parklines and mirror image or non mirror image options.

Grid line options: Default setting is to display grid lines. To remove the grid line display, connect the two green wires near the end of the camera harness.

Display options: (Not to be used in this application!) Default setting is mirror image display for rearward facing camera (rear view) installation. To change to non mirror image for forward facing camera (front view) connect the two white wires near the end of the camera harness.



Green and white wires on the camera harness.