

 **Electrolux**

QUICK START GUIDE
HARMONY™ EL6985A





INTRODUCTION

Thank you for choosing an Electrolux Harmony vacuum cleaner. This card covers your vacuum's basic features and operation. It does not replace the Operating Instructions for this model.



TROUBLESHOOTING

If vacuum cleaner does not start or stops during operation, read the Troubleshooting section of the Operating Instructions.

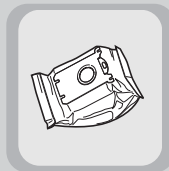
SAFETY PRECAUTIONS

Harmony should only be used by adults and for normal vacuuming in a domestic environment. Never vacuum in wet areas or close to flammable gasses. Do not vacuum sharp objects, lit objects, fluids or fine dust from items such as plaster, flour or ash. They can damage the motor - damage which is not covered by the warranty. FOR YOUR SAFETY: Read the entire Operating Instructions included with your Harmony for important safety information and instructions.

UNPACK AND CHECK CARTON CONTENTS

Remove all contents from carton. Check all accessories against the contents list.

OVERVIEW OF FEATURES AND ACCESSORIES



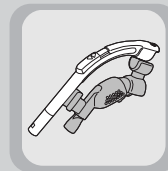
s-bag™



Hose



Telescopic tube



Caddie accessory holder



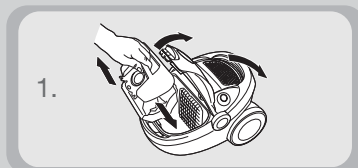
Carpet/Hard Floor nozzle



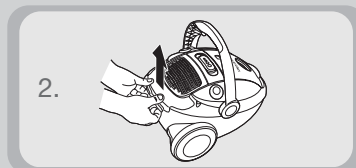
Turbo nozzle

SETTING UP - ASSEMBLE AND USE YOUR HARMONY

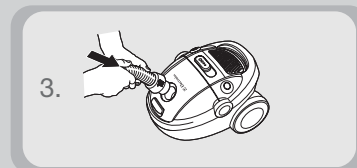
1. Check that the s-bag™ is in place.
2. Open the back lid on the machine and check that the exhaust filter is in place.
3. Insert hose until catch clicks.
4. Attach telescopic tube and floor nozzle to hose handle. See Operating Instructions for information on using other accessories.
5. Pull out power cord and plug it into standard outlet or power supply.
6. Press On/Off button with foot to start vacuum.
- 7a. Adjust suction power using suction control on vacuum cleaner.
- 7b. Adjust suction power using suction control on the hose handle.
8. Press On/Off button with foot to stop vacuum. Unplug from power supply, firmly grasp plug to prevent it from striking you and press foot pedal to rewind cable.



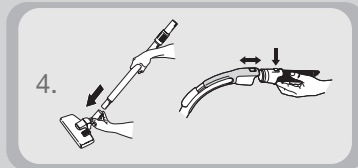
1.



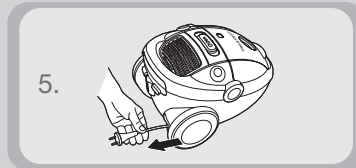
2.



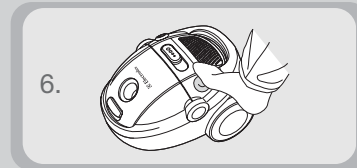
3.



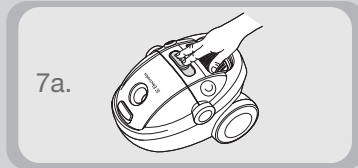
4.



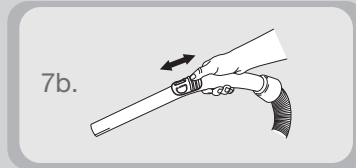
5.



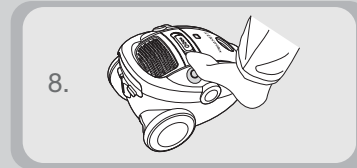
6.



7a.



7b.



8.

THE ELECTROLUX LIMITED WARRANTY

Your Electrolux cleaner is warranted to be free from all defects in material and workmanship in normal household use for a period of two years. The warranty is granted only to the original purchaser and members of his or her immediate household. The warranty is subject to the following provisions.

This warranty does not cover parts of the cleaner that require replacement under normal use, such as disposable dust bags, fans, filters, drive belts, light bulbs, brush roll bristles, impellers and cleaning. Any damages or malfunctions caused by negligence, abuse, or use not in accordance with the Owner's Guide are not covered by this warranty. Likewise, any defects or damages caused by unauthorized service or the use of other than Genuine Electrolux parts is not covered.

Electrolux will, at its option, repair or replace a defective cleaner or cleaner part that is covered by this warranty. As a matter of warranty policy, Electrolux will not refund the consumer's purchase price.

To register your warranty, please visit www.electroluxusa.com or fill out and return the attached warranty registration card.

To obtain warranty service you must return the defective cleaner or cleaner parts along with proof of purchase to any Electrolux Authorized Warranty Station. For the location of the nearest Electrolux Authorized Warranty Station or for service information in the United States or Canada, please telephone toll free:

1-800-896-9756

You may also visit us online at
www.electroluxusa.com

FURTHER LIMITATIONS AND EXCLUSIONS ARE AS FOLLOWS

Any warranty that may be implied in connection with your purchase or use of the cleaner, including any warranty of Merchantability or any warranty for Fitness For A Particular Purpose is limited to the duration of this warranty. Some states do not allow limitations on how long an implied warranty lasts, so the above limitations may not apply to you.

Your relief for the breach of this warranty is limited to the relief expressly provided above. In no event shall Electrolux be liable for any consequential or incidental damages you may incur in connection with your purchase or use of the cleaner. Some states do not allow the exclusion or limitation of incidental or consequential damages, so the above limitation or exclusion may not apply to you.

This warranty gives you specific legal rights. You may also have other rights which vary by state.

RECEIVE FREE ACCESSORIES BY REGISTERING YOUR ELECTROLUX

Register your Electrolux at www.electroluxusa.com or by using the postage-paid card attached and receive a free, no obligation, six-month VacCare subscription, which delivers the bags and filters you need right to your door. That's five s-bag™ Classic dust bags and one HEPA H12 filter - all the accessories you need for six months of hassle-free vacuuming. And registering your Electrolux product entitles you to the most up-to-date Electrolux product warranty and promotion information. Be sure to check the approval box on the attached registration card or online to receive your free subscription items.

Vac Care

SUBSCRIPTION SERVICE PLAN

At Electrolux, we know that cleaning is not your top priority. With this new subscription plan, we will worry about getting you the filters, bags and belts that fit your cleaner so that you can spend your time doing more important things.

Searching for replacement parts that fit your vacuum can be frustrating and time consuming and we know that you have more valuable ways to spend your time. That is why we are offering you a way to get vacuum parts such as filters, bags and belts delivered automatically to your home.

This is just one way that Electrolux makes your life a little easier.

**To subscribe, visit us online at
www.electroluxusa.com
or call us at 1-800-896-9756**