

Whether you want to clean up your desktop or integrate your MacBook into your home theater system, Henge Docks has you covered. We've designed the Henge Dock system to be extremely versatile, allowing you to choose only the connections you need, making docking and undocking your MacBook as smooth as possible. For more information email [info@HengeDocks.com](mailto:info@HengeDocks.com) or visit our Support Page at [www.HengeDocks.com](http://www.HengeDocks.com).

**Warranty -**

This product is warranted for a period of 90 days from date of original purchase. An original sales receipt is required for warranty service. Henge Docks will, at its sole discretion, repair or replace the defective product, or issue a refund of the original purchase price excluding shipping and taxes. Shipping costs to return this product to Henge Docks shall be borne by the warranty claimant.

**Limitation of Liability -**

Use this product at your own risk. Henge Docks is not liable for any damage caused by use of a Henge Docks product. In all cases, Henge Docks' liability for any and all damages resulting from the use or misuse of this product shall be limited to the lesser of the original purchase price or \$100.00. The venue for all legal proceedings shall be a court of competent jurisdiction in Virginia, USA. Continued use of this product implies consent to these terms. If you do not agree to these terms, please return this product to the place of purchase within 5 days for a full refund.



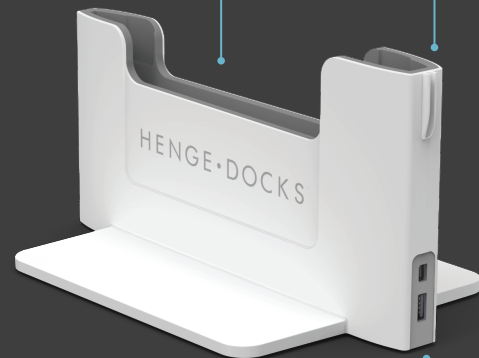
www.HengeDocks.com • TM and © Henge Docks, LLC 2012 • Manual v1.1  
Patent Pending • Manufactured in China • Designed in the USA by Henge Docks

# HENGE • DOCKS®

Vertical Docking Station for the MacBook Air User Guide

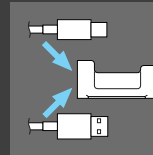
Rubberized Cradle

MagSafe Cable Clip

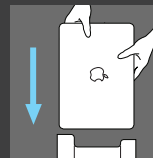


Mini DisplayPort and USB

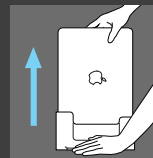
To begin setup, connect an external display and any USB peripherals to the ports on the rear of the dock. Position the MagSafe charging lead in the cable clip also located at the rear of the dock.



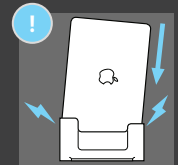
To dock the computer, gently lower the computer vertically onto the connections. No downward force is necessary. Connect the MagSafe cable to the power port on the MacBook.



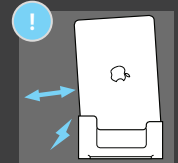
To undock the computer, place one hand flat on the wing and grasp the upper end of the computer securely with the other hand. Firmly pull the computer vertically to disconnect the ports.



Make sure your grip on the computer is secure before docking and undocking. Dropping the MacBook can damage the ports and dock connectors. Never force the computer into the dock.



Dropping, forcing, walking or wobbling the computer into the dock could result in damage to the ports. Never walk or rock the MacBook out of the dock.



All MacBook computers must be powered on, connected to a MagSafe power supply, external display, external keyboard and/or mouse to run in the closed position.

