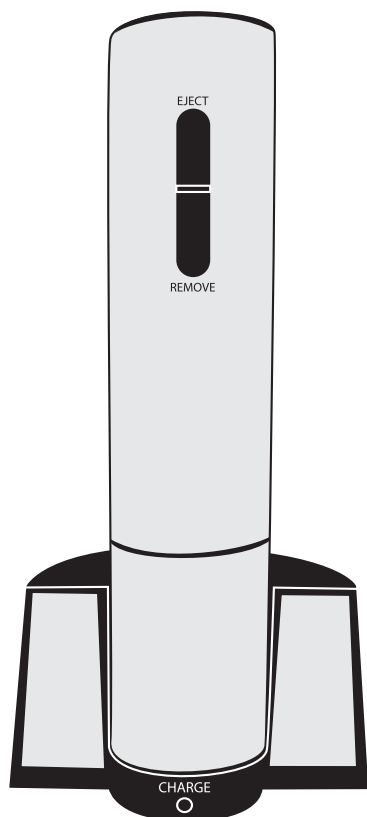


# WARING®

## STAINLESS STEEL ELECTRIC WINE OPENER



CRS50



For your safety and continued enjoyment of this product,  
always read the instruction book carefully before using.

# IMPORTANT SAFEGUARDS

When using electrical appliances, basic safety precautions should always be taken, including the following:

1. **READ ALL INSTRUCTIONS.**
2. Remove all packaging materials and any promotional labels or stickers from the appliance before first use. Do not allow children access to the plastic packaging bags.
3. **Do not operate appliance with a damaged cord or plug, after the appliance malfunctions or if it has been dropped or damaged in any manner. Return appliance to the nearest Authorized Service Center for examination, repair or electrical or mechanical adjustment, or phone Waring® Customer Service at 800 492-7464.**
4. To protect against risk of electric shock, do not put the electric appliance in water or other liquids. This may cause personal injury and/or damage to the product.
5. To protect against fire, do not operate the unit in the presence of explosive and/or flammable fumes.
6. Do not use the electric wine opener for other than its intended use.
7. This product is intended for normal domestic household use only.
8. When using or charging the electric wine opener, keep your workspace clean and free from potential hazards.
9. For indoor use only. Do not expose the electric wine opener or charging base to rain or other extreme conditions.
10. Never force the electric wine opener onto a bottle or attempt to speed up the mechanism. The electric wine opener will work best when it is operated at its intended speed.
11. Do not touch or adjust the electric wine opener's mechanism or the corkscrew spiral. Hold the electric wine opener by its housing only.
12. Do not attempt to open bottles if the switch is not working correctly.
13. Do not attempt to open the electric wine opener or the charging base. They have no user-serviceable parts. Charge

the electric wine opener only by using the charging base and power cord supplied.

14. Never remove the plug from the socket by pulling the power adapter.
15. Use of attachments not recommended or sold by Waring may cause fire, electric shock, injury or damage to the product.
16. Do not use any accessories or attachments with this appliance other than those recommended by Waring. Use only the power adapter supplied with this product.
17. Do not let cord hang over edge of table or counter or touch hot surfaces.
18. This appliance should not be used by adults or children whose lack of experience, product knowledge or disability might cause a hazard, unless they have been correctly instructed and are adequately supervised.
19. Children should always be supervised to ensure that they do not play with this product.
20. Do not place the appliance on or near a hot gas or electric burner or in a heated oven.
21. Do not operate your appliance in an appliance garage or under a wall cabinet. **When storing in an appliance garage, always unplug the unit from the electrical outlet.** Not doing so could create a risk of fire, especially if the appliance touches the walls of the garage or the door touches the unit as it closes.

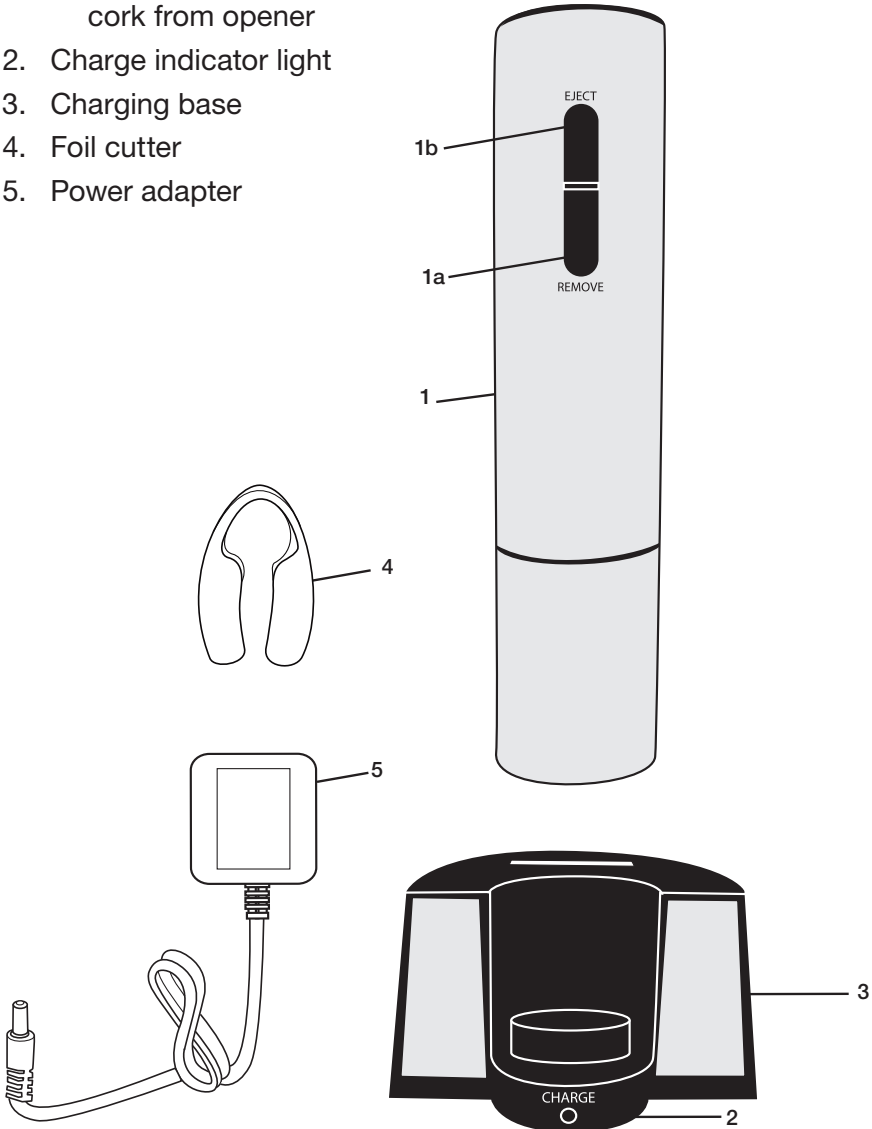
**CAUTION:** Corkscrew is sharp. Handle carefully. Keep hands and utensils out of the container while operating to prevent the possibility of severe personal injury and/or damage to the product or property.

## SAVE THESE INSTRUCTIONS FOR HOUSEHOLD USE ONLY

Before you use this product for the first time, please take a few moments to read these instructions. Keep them for future reference.

**PARTS**

- 1. Wine opener
  - a. REMOVE switch –  
Press to remove the  
cork from bottle
  - b. EJECT switch –  
Press to eject  
cork from opener
- 2. Charge indicator light
- 3. Charging base
- 4. Foil cutter
- 5. Power adapter



# OPERATING INSTRUCTIONS

## Connection and Use

This appliance is for 120 volts only and should not be used with a converter.

We recommend that you charge your electric wine opener for at least twelve hours before using for the first time. Please follow the instructions for charging as stated below:

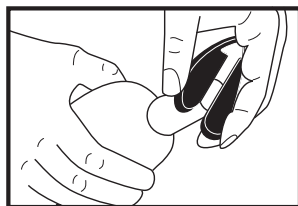
## Charging Your Electric Wine Opener

Plug one end of the power adapter into the back of the charging base and the other end into an electrical outlet. Place the electric wine opener into the charging base, making sure that it is firmly in position and that it is fully engaged with the charging connection. The blue indicator light will illuminate. It will take approximately 12 hours to charge your electric wine opener. The charging light will remain blue during the charging process, even when fully charged.

Your wine opener can open approximately 50 bottles of wine on a full charge.

## Foil Cutter

For your convenience, this unit has a foil cutter, which can be stored in the base of the unit. Before removing the cork, you must remove foil to expose top part of cork surface (see fig 1). Attach foil cutter to the top of the wine bottle. Keep hand on lower part of bottle and turn foil cutter in twisting motion to remove foil. Remove foil to expose top part of cork surface.

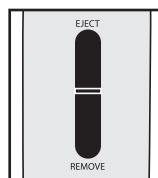


(fig. 1)

**CAUTION:** Blade on foil cutter is sharp. Please keep fingers away from cutter's sharp edges.

## To Operate Your Wine Opener

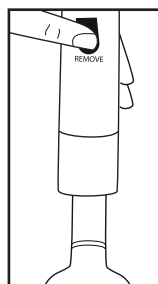
Press the REMOVE switch to remove the cork from the bottle. After the cork has been removed from the bottle, press the EJECT switch to release the cork from the wine opener (see fig. 2).



(fig. 2)

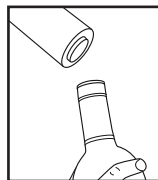
1. Place the wine opener on top of the wine bottle, making sure that it remains as straight/upright as possible at all times. If you hold the electric wine opener at an angle to the bottle it will not remove the cork properly.

2. Hold the wine opener and bottle firmly. Press the REMOVE switch. The corkscrew spiral will turn in a counterclockwise direction and enter the cork, gradually removing it from the bottle. When the mechanism stops, the cork has been fully removed from the bottle (see fig. 3).



(fig. 3)

3. Lift the wine opener up and away from the bottle. To eject the cork, press the EJECT switch. The spiral will turn in a clockwise direction and release the cork from the wine opener (see fig. 4).



(fig. 4)

4. Always return the wine opener to the charging base when done. This will protect the unit while not in use.

## **CLEANING AND MAINTENANCE**

Always unplug the appliance from the electrical outlet before cleaning.

Make sure all the parts are clean and dry before storing.

To clean housing, wipe with a clean, damp cloth.

Never immerse power adapter, charging base or housing in water or any other liquids.

Never submerge the motor base in water or other liquids, or place in a dishwasher.

Any other servicing should be performed by an authorized service representative.

## **AFTER USE**

We recommend that you return your appliance to the charging base so that it is fully charged and available for use at any time.

Trademarks or service marks of third parties used herein are  
the trademarks or service marks of their respective owners.

©2013 Waring Consumer Products  
150 Milford Road  
East Windsor, NJ 08520

[www.waringpro.com](http://www.waringpro.com)

Printed in China  
CRS50 IB  
13WR143830

IB-12264