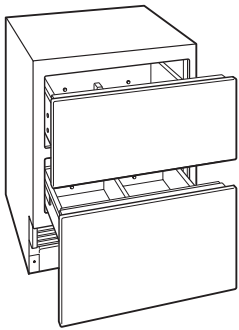


## FEATURES

- Custom front panels and hardware allow for infinite design options.
- Integrated design allows for dual installation and point-of-use refrigeration.
- Interactive smart-touch control panel.
- Smooth-glide, high-humidity crisper drawers with adjustable dividers.
- Drawer alarm and smart home features.



Model ID-27R



## MODEL OPTIONS

All Refrigerator	ID-27R
------------------	--------

## INTERIOR FEATURES

### REFRIGERATOR

Adjustable drawer dividers

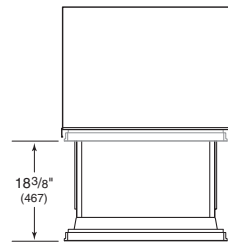
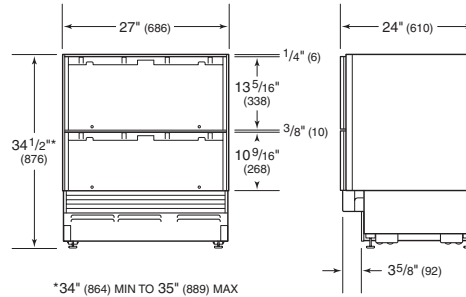
## ACCESSORIES

- Stainless steel front panels with tubular or pro handles.
- Stainless steel tubular and pro handles.
- Dual installation kit.
- Stainless steel kickplate.
- Air deflector for reduced toe kick.
- Dozen egg container.

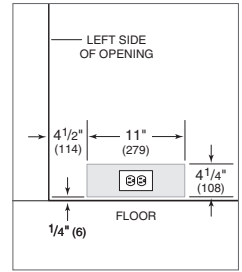
Accessories available through an authorized Sub-Zero dealer. For local dealer information, visit the find a showroom section of our website, subzero.com.

SPECIFICATIONS	
<b>PRODUCT</b>	
Dimensions	27"W x 34 1/2"H x 24"D
Weight	190 lb
<b>CAPACITY</b>	
Refrigerator	4.6 cu ft
<b>ELECTRICAL</b>	
Supply	115 VAC, 60 Hz
Service	15 amp circuit

**DIMENSIONS**



**ELECTRICAL**

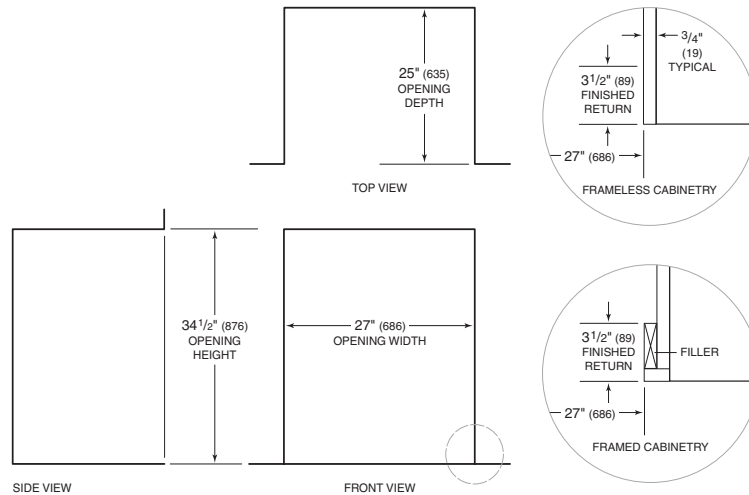


Product dimensions do not include panels or handles and will vary with panel thickness. Allow for panel thickness when planning the finished opening depth.

Specifications are subject to change without notice. Visit [subzero.com/specs](http://subzero.com/specs) for the most up-to-date information.

Dimensions may vary  $\pm 1/8$ " (3). Dimensions in parentheses are millimeters unless otherwise specified.

**INSTALLATION**



NOTE: 3 1/2" (89) finished returns will be visible and should be finished to match cabinetry.