



COOKING

BUILT-IN
2013/2014

IN HARMONY WITH YOUR LIFE

With over 125 years of production and expertise in the appliance and metal industries, Blomberg is a quality name in the European household appliance market. Now owned by Arçelik, the 3rd largest appliance manufacturer in Europe, Blomberg has gained a sizeable presence in the European home. For years Blomberg has been setting trends in both technology and style, and continues to employ technologically advanced appliances, while still keeping the everyday family life in mind. As a widely recognized international name, Blomberg has established itself in North America with an ever-expanding line of appliances that have superior features and quality. In the coming years, Blomberg has its sights set on becoming a leading brand in the United States and Canada, just as it has been in Europe for so many years. Blomberg has introduced an outstanding collection of cookers with advanced German engineering and state-of-the-art designs.

IN HARMONY WITH NATURE

ENVIRONMENTALLY FRIENDLY



Environmental friendly

Preservation of natural resources is a priority for Blomberg, where not only our production facilities are environment-conscious, but also all our products. All Blomberg wall ovens are not only energy efficient but also RoHS compliant. The products are built of 99.9% lead-free materials, and 85% of our components are recyclable.

IN HARMONY WITH YOU

PRACTICAL

3D cooking

3D cooking is an advanced convection system that uses an additional heating element, which surrounds the cooking fan located at the back of the oven, for a three-dimensional cooking effect. Through constant air circulation, food is cooked more uniformly throughout. This function allows you to cook large pieces such as big turkey or meat perfectly.



Robust handle

All Blomberg ovens feature the robust, elegantly finished straight stainless handle. The same handle is used in other Blomberg appliances such as refrigerators and dishwasher line-up in order to create an uniform look in your kitchen.



Programmable electronic timer

Blomberg ovens feature electronic timers that show the time of day and allow you to pre-set the start time, duration or end of cooking. When the set cooking time ends, the oven switches itself off automatically, and warns you with an audio signal.



IN HARMONY WITH YOU

SAFE

Auto shut-down

Your Blomberg electronic oven will automatically shut itself down after 6 hours of operation (except during warm keeping and defrost functions). You no longer need to ask yourself if you've remembered to turn off the oven before leaving home.

Hidden top heater

The top heater in Blomberg ovens is hidden eliminating the risk of self injury while reaching the top shelf. In addition, it minimizes the temperature of the oven handle and knobs for a safe touch.

Quality tested

For long time expectancy, 100% of Blomberg ovens are tested before they leave the factory. Additionally, random accelerated life tests are performed on products.

COOKING FUNCTIONS

Blomberg ovens offer a wide choice of heating methods providing ideal cooking options for all type of food.



Bottom heater

Only the bottom heater is in operation. This function is ideal for slow cooking and for baking pizza and pastries where the base needs more crisping than the top.



Conventional

The top and bottom heaters are in operation. The bottom heater will cook the base and the middle of the food while the top heater is used for browning. This function is ideal for stews, casseroles, pastries and meats.



Grill

The full grill is in operation. This function is ideal for grilling and browning larger quantities of food.



Fan cooking

The circular heater and the fan motor operate together. The heat in the oven is distributed evenly in the centre. In this setting, you can cook 3 different dishes at the same time without blending their flavours and aromas.



Low grill+fan

The mid part of the grill and the fan motor operate together. This function is ideal for perfect browning of food placed on the top shelf and warming food in lower shelves.



Conventional+fan

The bottom and top heaters operate together with the fan motor. This function is ideal for using the whole oven, with particular focus on browning and base heat.



Defrost

The fan motor is in operation. This function is ideal for defrosting delicate foods like cakes and pastries.



3D cooking

Top, bottom and central heaters operate together with the fan motor. This function allows you to cook large pieces such as big turkey or meat perfectly.

IN HARMONY WITH YOU

EASY TO CLEAN

Easy Clean enamel

Blomberg oven cavities are coated with Easy Clean, exclusive, non-porous, grey enamel. This long lasting finish gives an elegant look and allows easy, quick and ecologic cleaning of the oven cavity and trays.

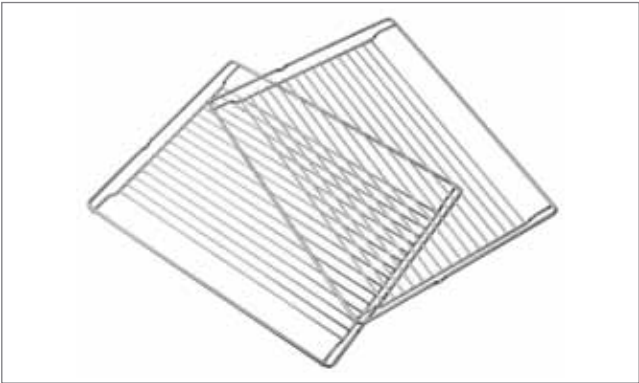


Smooth cavity

With no visible screws or connection points, the surface of the Blomberg oven cavity is smoother than ever. The smooth surface eliminates the risk of food and dirt particle collection and enabling the cleaning very easily.

Easy-to-remove side racks

Blomberg ovens are equipped with easy hand removable wire racks, which provide effortless access to the oven sidewalls, enabling complete cavity cleaning with minimal effort.



IN HARMONY WITH YOU

PRACTICAL

Full glass door with large window

Blomberg ovens are designed with a wide, transparent glass window to allow you to see the oven interior without having to open its door, avoiding heat and energy loss during the cooking cycle. Additionally the door has multiple glass panels to keep the full heat inside the oven and reflect minimum heat outside of the unit when cooking is in progress. All models have easily removable doors for a thorough wipe of the door itself or to allow easy access to the oven cavity. In certain models the glass window is also removable to allow you to clean the glass separately.



Stylish details

By concealing the top heater, Blomberg has not only maximized the cooking space but also gave it a smooth elegant look inside the wall oven. The special Easy Clean grey enamel coating is another stylish design element featured on Blomberg ovens.

IN HARMONY WITH YOU

PRACTICAL



Fan cooking

The circular heater and the fan motor operate together. This function allows heat to be distributed evenly in the center of our oven. In this setting, you can cook 3 different dishes at the same time without blending their flavours or aromas.

Interior lighting

To allow you thorough and easy observation of the cavity, Blomberg ovens feature interior lighting with cylindrical lamps placed on the rear wall. Grey-coloured cavity surface reduces reflection on the glass doors.

Large cavity

Blomberg BWOS24100 and BWOS24200 models have extended cavities by up to **20%** to maximize the joy of cooking and dining. Blomberg ovens offer one of the largest spaces in the market in this class with **65-litre (2,3 cuft) cavity** for conventional and multifunction ovens and they come with bigger sized trays. You no longer have to worry about fitting the Thanksgiving turkey in your oven or the tray. Additionally three separate dishes can be cooked at the same time by placing each to any 5 different levels in the cavity.

**IN HARMONY
WITH YOU**

PRACTICAL COOKING WITH CERAMIC COOKTOPS



Elegant design

Blomberg ceramic cooktops have scratch-free, easy-to-clean smooth surfaces providing clean and modern looks thanks to their frameless finish.

Timer

Blomberg CTE 36500 model has a timer that allows you to set a cooking time for each cooking zone separately. When the cooking time is up, the cooktop will automatically switch off the zone and a buzzer will signal the end of cooking.



Easy controls

Blomberg electric cooktops have touch slider or touch-sensitive front controls that are practical and allow precise temperature settings. Each heating zone is also operated by a separate touch point so that power levels on each individual cooktop can easily be regulated.



Fingerprint free stainless steel

A selection of stainless steel models in the range have fingerprint free panel and doors, so you won't have to worry about leaving behind a mark.

Safe

To inform you that the cooking zone is not cool enough to touch safely, the **residual heat indicators** warn you with a visible red indicator on the cooktop surface. The **child lock** prevents children from changing the cooking settings by locking the controls. The **overflow protection system** automatically shuts off the power in case of liquid boiling over onto the control panel. Also, the cooktop automatically switches itself off if the zone is left on for a long period of time.

MODELS

BWOS 30100

BWOS 24100

BWOS 24200



Electronic Multifunction Oven

Mechanical Display
78 L (2,8 cuft)
7 cooking functions

Cooking function

- Convection bake, Convection broil, Convection roast, Bake, Broil, Dehydrate, Fast Preheat, Self-clean

Main features

- Self cleaning Technology
- Door closed grilling
- Removable full width glass inner door
- Oven light with door opening
- Quadruple glazed cool door

Cavity

- Black enamel
- 4 level embossed racks
- Interior light

Accessories

- Wire shelf

Technical Information

- Dimensions (HxWxD): 23 3/16" x 29 3/8" x 22 1/16"
- Dimensions (HxWxD): 589 x 745 x 560 mm
- KW/Amps rating at 240V, 60Hz: 3.625kW - 15.6Amps
- KW/Amps rating at 208V, 60Hz: 3.529kW - 17.4Amps

Color

Stainless Steel

Electronic Multifunction Oven

Programmable digital display
65 L (2,3 cuft)
8 cooking functions

Cooking function

- Convection bake, Convection broil, Convection roast, Bake, Broil, Fast Preheat, 3D, Defrost

Main features

- Easy to Clean Enamel
- Door closed grilling
- Removable full width glass inner door
- Triple glazed door

Cavity

- Smooth surface
- 5 level removable side racks
- Interior light

Accessories

- Wire shelf

Technical Information

- Dimensions (HxWxD): 23 3/8" x 23 3/8" x 22 3/9"
- Dimensions (HxWxD): 594 x 595 x 567 mm
- KW/Amps rating at 240V, 60Hz: 2374W / 9,89A
- KW/Amps rating at 208V, 60Hz: 1783W / 8,57A

Color

Stainless Steel

Electronic Multifunction Oven

Programmable digital display
65 L (2,3 cuft)
8 cooking functions

Cooking function

- Convection bake, Convection broil, Convection roast, Bake, Broil, Fast Preheat, 3D, Defrost

Main features

- Easy to Clean Enamel
- Door closed grilling
- Removable full width glass inner door
- Triple glazed door

Cavity

- Smooth surface
- 5 level removable side racks
- Interior light

Accessories

- Wire shelf

Technical Information

- Dimensions (HxWxD): 23 3/8" x 23 3/8" x 22 3/9"
- Dimensions (HxWxD): 594 x 595 x 567 mm
- KW/Amps rating at 240V, 60Hz: 2374W / 9,89A
- KW/Amps rating at 208V, 60Hz: 1783W / 8,57A

Color

Stainless Steel Panel, Full glass door



easy
clean



easy
clean



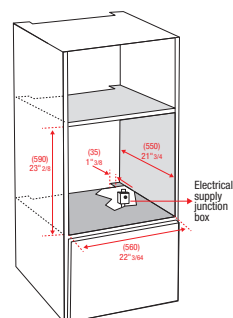
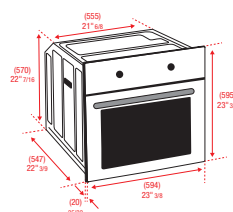
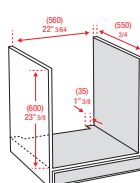
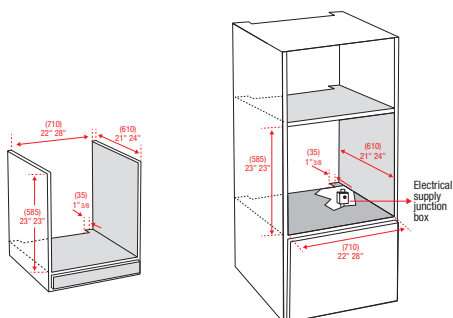
3D
cooking



easy
clean



3D
cooking



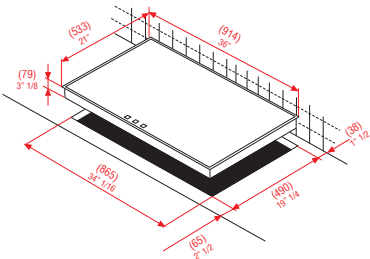
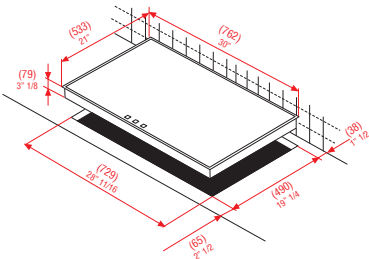
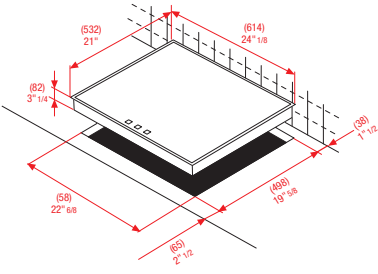


CTE 36500

CTE 30400

CTE 24400



90 cm Vitroceramic Cooktop	75 cm Vitroceramic Cooktop	60 cm Vitroceramic Cooktop
<p>Touch slider sensitive front control</p> <p>Digital display</p> <p>5 vitroceramic zones</p>	<p>Touch sensitive front control</p> <p>Digital display</p> <p>4 vitroceramic zones</p>	<p>4 vitroceramic zones</p>
<p>Main features</p> <ul style="list-style-type: none">■ 9 cooking levels per zones■ 5 vitroceramic zones■ 3 x 1800W - 7"■ 2500W / 1600W / 800W - 9" / 7" / 5"■ 1200W - 6"■ Timer■ On/off indicator <p>Safety</p> <ul style="list-style-type: none">■ Individual residual heat indicators■ Key lock <p>Technical Information</p> <ul style="list-style-type: none">■ Dimensions (HxWxD): 3 9/32" + conduit 15/16" x 36" x 21"■ Dimensions (HxWxD): 84 + conduit 24 x 914 x 533 mm <p>Color</p> <p>No frame</p>	<p>Main features</p> <ul style="list-style-type: none">■ 9 cooking levels per zones■ 4 vitroceramic zones■ 2 x 1200W - 6"■ 2500W / 1100W - 9" / 6"■ 2200W / 800W - 8" / 5"■ On/off indicator <p>Safety</p> <ul style="list-style-type: none">■ Individual residual heat indicators■ Key lock <p>Technical Information</p> <ul style="list-style-type: none">■ Dimensions (HxWxD): 3 1/8" x 24 3/16"x 20 7/8"■ Dimensions (HxWxD): 82 x 614 x 532 mm <p>Color</p> <p>No frame</p>	<p>Main features</p> <ul style="list-style-type: none">■ Side mounted manual control■ 6 cooking levels per zones■ 4 vitroceramic zones■ 2 x 1800W - 2 X 7"■ 2 x 1200W - 2 X 5,5"■ On/off indicator <p>Safety</p> <ul style="list-style-type: none">■ Individual residual heat indicators <p>Technical Information</p> <ul style="list-style-type: none">■ Dimensions (HxWxD): 3 1/8" x 24 3/16"x 20 7/8"■ Dimensions (HxWxD): 82 x 614 x 532 mm <p>Color</p> <p>Stainless steel frame</p>
		
		

TECHNICAL DETAILS

BUILT-IN OVENS / MODEL NUMBER		BWOS 30100	BWOS24100	BWOS24200
SERIES				
Type	Built-in Oven	Built-in Oven	Built-in Oven	
Size	30"	24"	24"	
Colour	Stainless Steel	Stainless Steel	Stainless Steel	
Oven Type / Upper Oven Type	Multifunction (True Euro Connection)	Multifunction (True Euro Connection)	Multifunction (True Euro Connection)	
Control type	Electronic	Electronic	Electronic	
FUNCTIONS				
Pyrolytic Self-Clean with automatic door latch	Yes	No	No	
True European Convection Bake (ring element)	Yes	Yes	Yes	
Convection Broil	Yes	Yes	Yes	
Convection Roast	Yes	Yes	Yes	
Bake	Yes	Yes	Yes	
Broil	Yes	Yes	Yes	
Dehydrate	Yes	No	No	
Fast Preheat	Yes	Yes	Yes	
Defrost	No	Yes	Yes	
SPECIAL FEATURES				
Automatic Fast Preheat	Yes	Yes	Yes	
Electronic Lock	Yes	Yes	Yes	
Sabbath mode	Yes	Yes	Yes	
12/24 hours clock format	Yes	Yes	Yes	
°C/°F degree unit	Yes	Yes	Yes	
OVEN DOOR				
Oven Glass Window	Large See Through Glass	Large See Through Glass	Large See Through Glass	
Door Cooling System	4 Pane Heat Resistant Glass	3 Pane Heat Resistant Glass	3 Pane Heat Resistant Glass	
OVEN CAVITY				
Net Capacity	78lit / 2.8 cuft	65lit =2.3 cuft	65lit =2.3 cuft	
Cavity Enameling Colour	Black	Grey	Grey	
Rack Positions	4 embossed	5 slide rack	5 slide rack	
Oven Lights	2x20W Halogen	1x25W	1x25W	
Broil Upper Heating Element	3500W (240V)	2200W	2200W	
Upper Auxiliary Element Wattage	1032W (240V)	1100W	1100W	
Concealed Bake Lower Heating Element	3000W (240V)	1200W	1200W	
Convection Element Wattage	2500W (240V)	1800W	1800W	
ACCESSORIES				
Chromed racks	2	2	2	
DIMENSIONS / WEIGHT				
Overall dim - width	23 3/8" (745 mm)	23 3/8" (595 mm)	23 3/8" (595 mm)	
Overall dim - height	23 3/16" (589 mm)	23 3/8" (594 mm)	23 3/8" (594 mm)	
Overall dim - depth	22 1/16" (560 mm)	22 3/9" (567 mm)	22 3/9" (567 mm)	
Cutout - width *	28" (710 mm)	23 2/8" - 23 5/8" (590 mm - 600 mm)	23 2/8" - 23 5/8" (590 mm - 600 mm)	
Cutout - height (min)	23" (565 mm)	22 3/64" (560 mm)	22 3/64" (560 mm)	
Cutout - depth (min)	24" (610 mm)	21 3/4" (550 mm)	21 3/4" (550 mm)	
Overall dim - width (packed)	820	26" (660 mm)	26" (660 mm)	
Overall dim - height (packed)	750	26" (660 mm)	26" (660 mm)	
Overall dim - depth (packed)	690	26" (660 mm)	26" (660 mm)	
Net weight (lb /kg)	148lb/67kg	70lb / 32kg	70lb / 32kg	
Gross shipping weight (lb /kg)	163lb/ 74kg	79lb / 36kg	79lb / 36kg	
POWER / RATINGS				
KW/Amps rating at 240V, 60Hz	3.625kW - 15.6Amps	2374W / 9.89A	2374W / 9.89A	
KW/Amps rating at 208V, 60Hz	3.529kW - 17.4Amps	1783W / 8.57A	1783W / 8.57A	
Cable + Conduit	Yes	Yes	Yes	
INSTRUCTIONS FOR USE				
Use & Care Manual	EN, SP, FR	EN, SP, FR	EN, SP, FR	
Installation Manual	EN, SP, FR	EN, SP, FR	EN, SP, FR	

*For 24" models, min-max cut-out width info is given for under counter and column installations respectively

CERAMIC COOKTOPS / MODEL NUMBER		CTE 36600	CTE 30400	CTE24400
Size	36"	30"	24"	
Color	Black	Black	Black	
Heating technology	Radiant Heaters	Radiant Heaters	Radiant Heaters	
Glass Type	Glass Ceramic	Glass Ceramic	Glass Ceramic	
Stainless Steel Frame	No	No	No	
Control type	Touch Control with slide TC	Touch Control	Knob Control	
CONTROL FEATURES				
Slide touch control for power setting	Yes	N/A	N/A	
Digital display for power level indication	5	4	N/A	
Low power scale for delicate cooking	Yes	Yes	N/A	
Command Lock	Yes	Yes	N/A	
Automatic Fast Boil function	Yes	Yes	N/A	
Hot Surface indication	Yes	Yes	Yes	
Residual heat indication	Yes	Yes	Yes	
Timer function	Yes	N/A	N/A	
Timer display	Yes	N/A	N/A	
Acoustic buzzer	Yes	Yes	N/A	
Failure Codes indication	Yes	Yes	N/A	
ZONE SIZE & POWER				
Front Left Zone	1800W - 7"	1200W - 6"	1800W - 7"	
Bridge Element	800W	N/A	N/A	
Rear Left Zone	1800W - 7"	2500W / 1100W - 9" / 6"	1200W - 5.5"	
Central Zone	2500W / 1600W / 800W - 9" / 7" / 5"	N/A	N/A	
Rear Right Zone	1800W - 7"	2200W / 800W - 8" / 5"	1800W - 7"	
Front Right Zone	1200W - 6"	1200W - 6"	1200W - 5.5"	
DIMENSIONS/WEIGHT				
Overall dim - width	36" (914 mm)	30" (762 mm)	24 3/16" (614 mm)	
Overall dim - height	3 9/32" (84mm) + conduit 15/16" (24 mm)	3 9/32" (84 mm) + conduit 15/16" (24 mm)	3 1/8" (82 mm)	
Overall dim - depth	21" (533 mm)	21" (533 mm)	20 7/8" (532 mm)	
Cutout - width (min-max)	34 1/16" (865 mm) 34 5/16" (872 mm)	28 11/16" (729 mm) 28 15/16" (735 mm)	22 5/8" (575 mm) 22 7/8" (580 mm)	
Box - height	3 1/16" (78mm) + conduit 15/16" (24 mm)	3 1/16" (78 mm) + conduit 15/16" (24 mm)	5 7/8" (150 mm)	
Cutout - depth (min-max)	19 19/64" (490 mm) 19 5/8" (498 mm)	19 19/64" (490 mm) 19 5/8" (498 mm)	19 5/8" (494 mm) 19 5/8" (498 mm)	
Approx ship weight	19.4Kg (43 Lbs)	16.2 Kg (36 Lbs)	12.5kg (27.6 Lbs)	
POWER / RATINGS				
KW/Amps rating at 240V, 60Hz	9.900kW - 41.25Amps	7.100kW - 29.58Amps	6.000kW - 25Amps	
KW/Amps rating at 208V, 60Hz	7.436kW - 35.75Amps	5.332kW - 25.63Amps	4.500kW - 21.6Amps	
Cable + Conduit	Yes	Yes	Yes	
INSTRUCTIONS FOR USE				
Use & Care Manual	EN, SP, FR	EN, SP, FR	EN, SP, FR	
Installation Manual	EN, SP, FR	EN, SP, FR	EN, SP, FR	

Blomberg®
seit 1883



www.blombergappliances.com
info@blombergappliances.com
1-800-459-9848

Due to the continual improvements achieved through research and development, Blomberg reserves the right to make any changes to the specifications and features of products without prior notice. As a result, you may find differences between the product as described in the catalog and the product you receive.