

SAMSUNG

SERIES 7
7100

QUICK START GUIDE



BN68-05033A-03

Welcome to your new Smart TV!

The following instructions cover assembling, connecting, and setting up your new TV. Make sure you have the accessories listed below.

Included in this box

Remote Control



Smart Touch Control

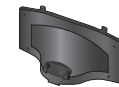


Batteries (AAA x 2)

Stand Parts and Cables



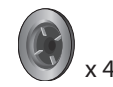
Power cord



Stand Mount



IR extender



Wall mount adapter



Cable manager

Attach the TV to the Stand	Connect video devices	Using the Smart Touch Control	Power on and start the initial setup
Step 1	Step 2	Step 3	Step 4

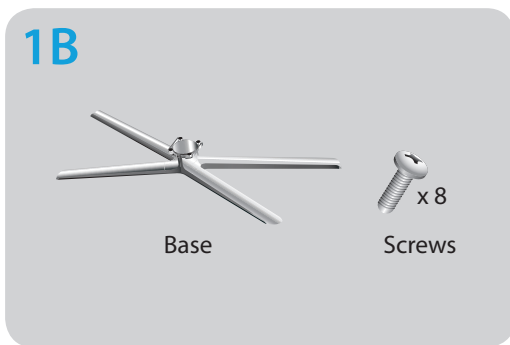
Warning: Screens can be damaged from direct pressure when handled incorrectly. We recommend lifting the TV by the edges, as shown.

Also included: User manual, regulatory guide, 3D Active Glasses

Step 1 Attach the TV to the Stand

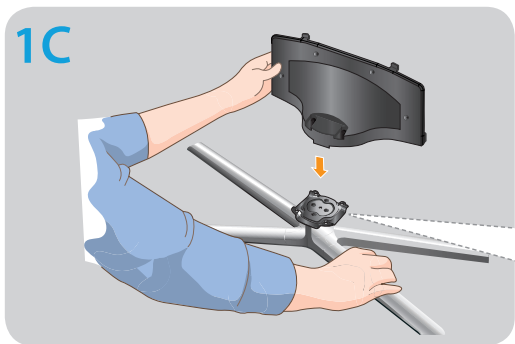


Lay the TV on a soft surface, screen side down. Use the packing material to protect the screen.

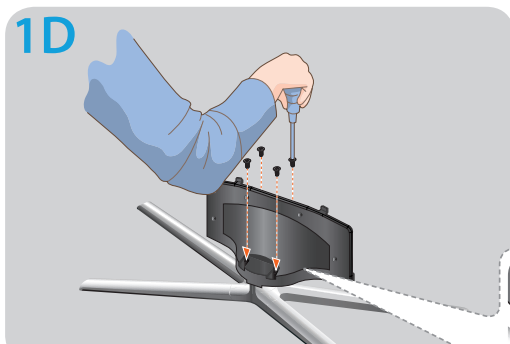


Find the stand base and screws in the box and set aside.

REQUIRED TOOLS: a Phillips head screwdriver and a soft, flat surface larger than the TV (such as the box).



Fit the stand and mount together, making sure the notch on the mount aligns with the stand.



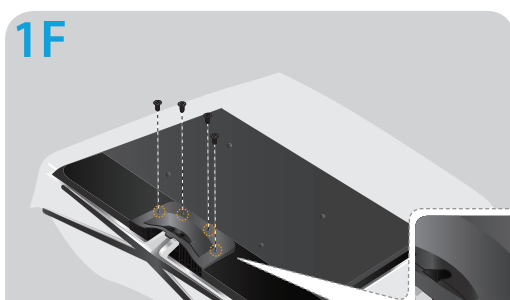
Insert 4 screws and secure the stand to the mount.

40 - 55 inches models: x4 (M4 X L12)

60 inches and above models: x4 (M4 X L10)



Holding the stand parallel to the screen, slide the stand into the notches on the back of the TV.



Insert 4 screws and secure the stand to the TV.

40 - 55 inches models: x4 (M4 X L12)

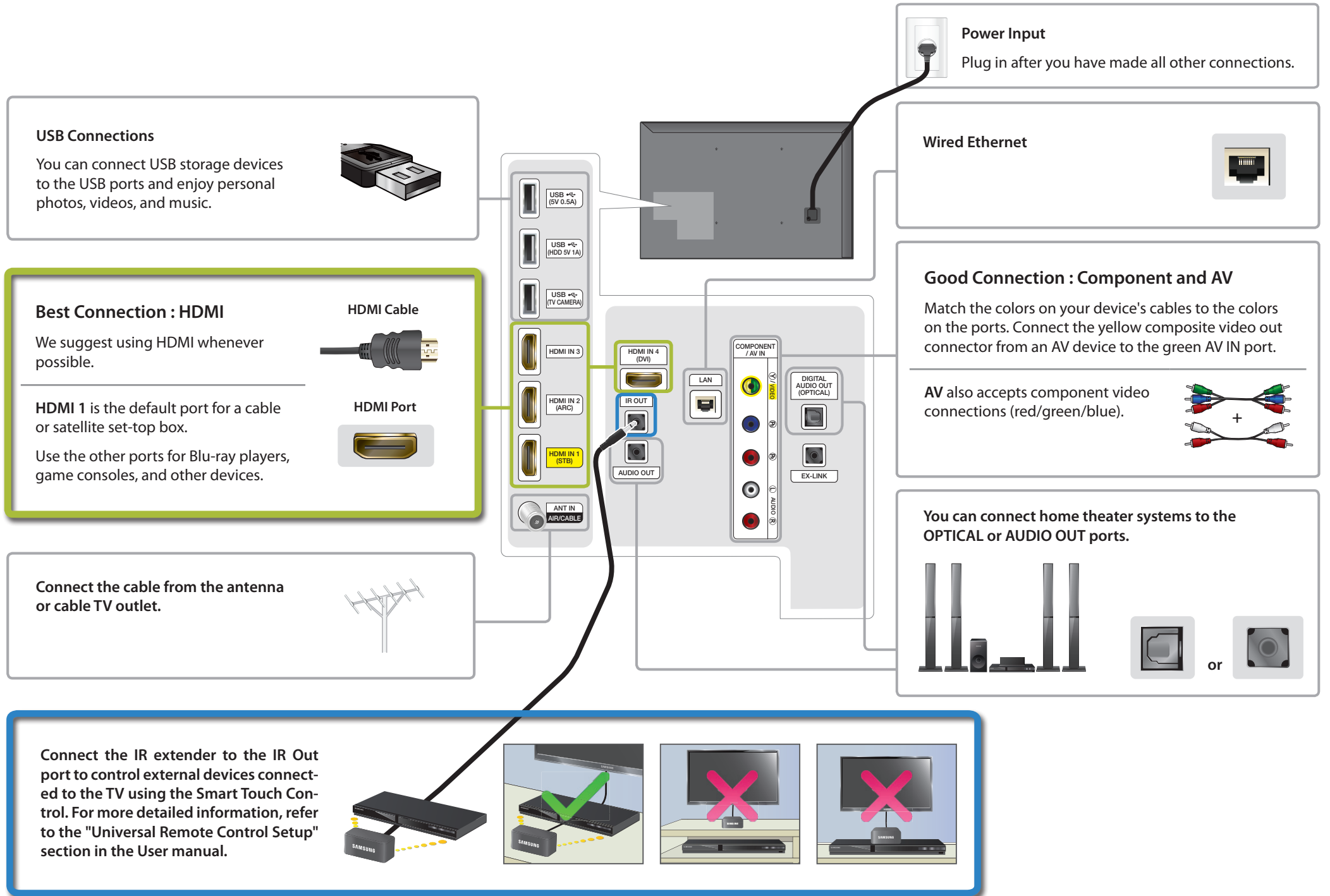
60 inches and above models: x4 (M4 X L10)



Step 2 Connect video devices

We suggest using HDMI connections whenever possible for the best picture quality.

- Please check the shape of the plugs to avoid inserting them upside down.
- The appearance of your TV may differ from the images below, depending on the model.



Step 3 Using the Smart Touch Control

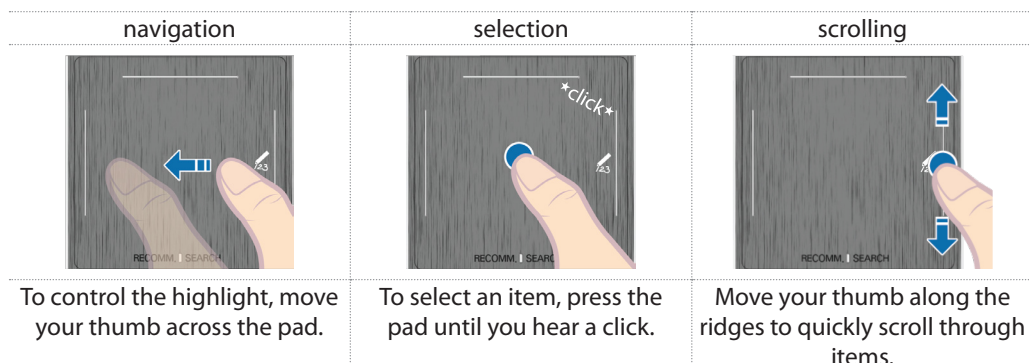
Insert the batteries into the Smart Touch Control

Insert the tip of a credit card or similar item into the notch on the side of the Smart Touch Control, and then twist the card to open and remove the remote's back cover.



The notch's location may vary depending on the type of Smart Touch Control provided.

Using the touch pad



Pairing the Smart Touch Control

If you need to reestablish the connection between the TV and the Smart Touch Control, press the pairing button at the back of the Smart Touch Control, pointing at the remote control sensor of the TV.

Congratulations on your new Smart TV!

Step 4 Power on and start the initial setup

Information required:

- Wi-Fi network password (if you use one)
- Zip code
- Cable or satellite provider info

Plug in the TV. Press the power button on the remote to turn on the TV and start the initial set-up.

- The TV must be connected to the Internet to use the Smart Features. If you have a wireless network, confirm that your network router is working before you start the initial setup. If you have a wired network, connect the TV to the network with a CAT 7 cable before you begin.

Troubleshooting

The stand is wobbly or crooked

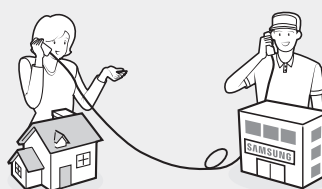
Make sure the arrows on the stand are properly aligned.

The TV won't turn on

Make sure all cables are fully inserted, and that the remote has batteries installed.

I have extra parts

The TV includes some optional parts to help with wall mounting and cable routing.



If you experience issues, please do not take the TV back to the store.

In the United States of America, call us at 1-800-SAMSUNG (1-800-726-7864) or visit us at www.samsung.com or www.samsung.com/spsn for support and warranty service.

For other countries, refer to "Contact SAMSUNG WORLDWIDE" in the user guide.