



VL414110
Vario downdraft ventilation 400 series
Stainless Steel
Vaentilation element.
Air extraction/recirculation with remote fan unit AR 400/401/413
Comes without blower and AA 490 control knob.

Highly efficient ventilation system at cooktop level
Up to 4 ventilation elements can be connected to one blower, operated by one AA 490 control knob. Control knob has to be ordered separately. Flexible power distribution, precise extraction of cooking vapors only at the open ventilation element. Precision crafting of 1/8-inch stainless steel
For surface mount installation with a visible edge or for flush installation Can be perfectly combined with other Vario products of the 400 series
Minimal planning and easy installation for air recirculation

Output
Maximum air output in combination with AR inline blower/ remote blower or recirculation kit. For CFM info, refer to the Models & Dimensions, Edition 2013. Noise level depends on the built-in situation.

Features
Ventilation flaps will open when manually pushed down. Closing element made of stainless steel, dishwasher-safe. Metal grease filter with grease dripping tray, dishwasher-safe. Sensor-controlled operation of the AR blower if at least one VL 414 downdraft unit is open. No duct connection pieces are included. Must order AD724040 transition to 5" round duct to vent downwards/to left or to the right side and AD724041 adaptor if venting to left or right side of VL 414 downdraft.

Planning notes
Depending on the type of installation - surface-/ or flush-mounted, with or without cover - the specific location of the control knob positions may vary. When using the appliance cover VA 440 or adjustment strip VA 450 additional space for cut-out depth needs to be considered. In a combination of Vario cooktops with at least one appliance cover, the adjustment strip VA 450 is required. In a combination of several Vario 400 series cooktops a connection strip must be used. Depending on the type of installation - surface-/ or flush-mounted, with or without cover - the respective VA 420 connecting strip must be used. For flush installation the edge height in the cut-out needs to be at least 1/2" and for surface-mount 3/8". Ensure a continuous cut surface of 90°. The weight capacity and stability, especially in case of thin countertops, must be supported using suitable substructures. Take the appliance weight and additional loads into account. Flush installation is possible in countertops made of stone, synthetics or solid wood. Heat resistance and watertight sealing of the edges must be observed. For other materials, please consult with your countertop manufacturer.

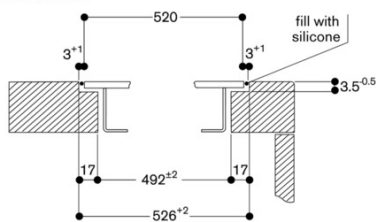
Product Features
Operating Mode
Convertible: Ducted / Recirculating
Number of speed settings
Delay Shut off modes
Silence level (dBA)
Required accessories
Optional accessories
AA414010
Number of lights
Type of lamps used
Total power of the lamps (W)
Grease filter material
Washable stainless steel
Grease filter type
Multilayer cassette
Clean filter reminders

Consumption and connection features
UPC code
825225901440
Material
Stainless steel
Watts (W)
Current (A)
Volts (V)
Frequency (Hz)
50-60
Approval certificates
CE, VDE
Power Cord Length
Plug type
Overall appliance dimensions (HxWxD) (in)
/ x 4 5/16 " x 20 15/32 "
Product packaging dimensions (HxWxD) (in)
6.69 x 15.35 x 23.22
Height of the chimney (in)
Vertical rise height
Required distance above cooktop/ ranges
Net weight (lbs)
9
Gross weight (lbs)
15
Adjustable feet
Motor location
without motor
Maximum CFM
Diameter of air duct (in) top
Diameter of air duct (in) back
Discharge direction
downward
No-return airflow flap
No

2013-11-26
Page 1

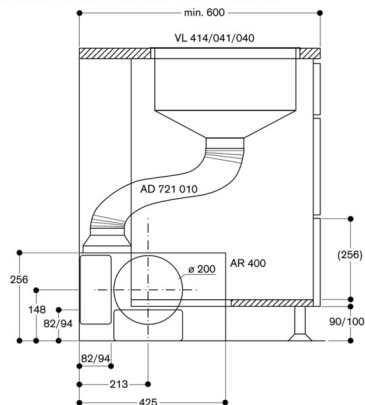
Rating

Cross-section

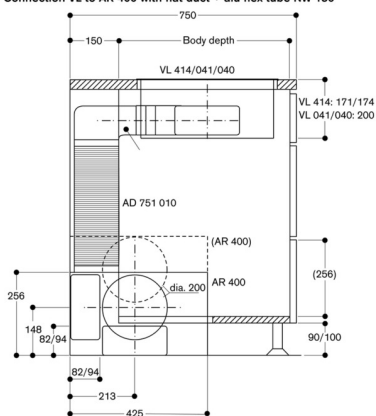


For installation with appliance cover or adjustment bar,
observe the deeper notch and the slot width front and back.

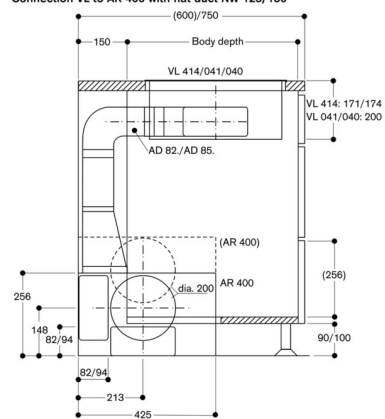
Connection VL to AR 400 with alu flex tube NW 125



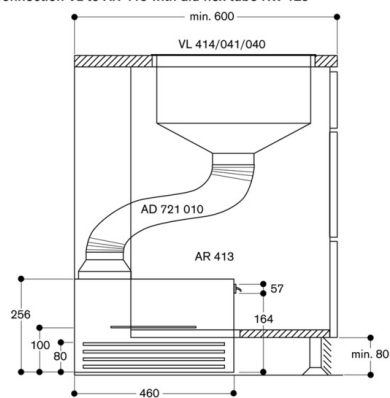
Connection VL to AR 400 with flat duct + alu flex tube NW 150



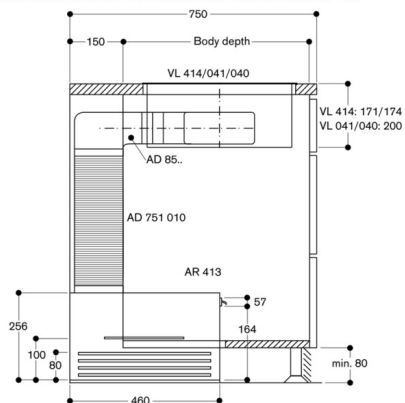
Connection VL to AR 400 with flat duct NW 125/150



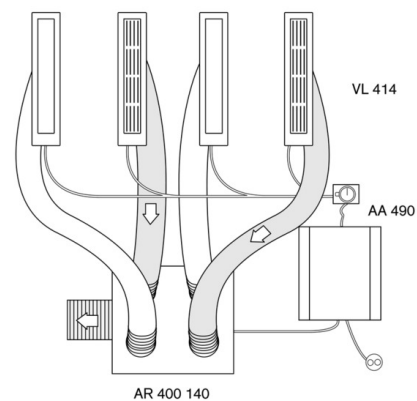
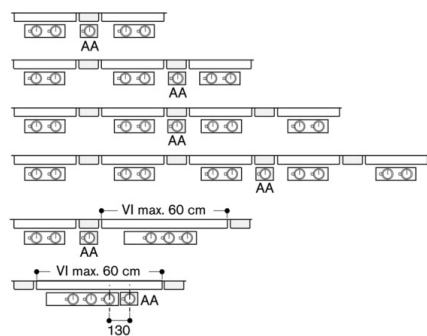
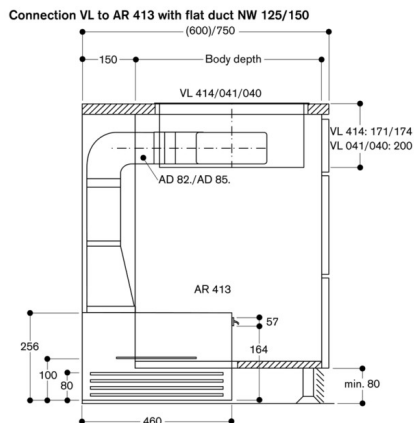
Connection VL to AR 413 with alu flex tube NW 125



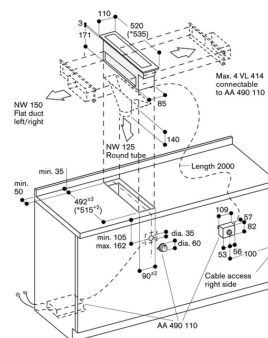
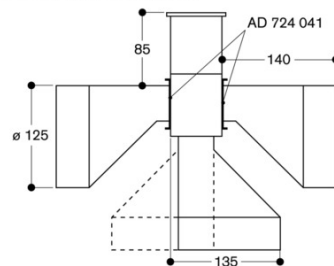
Connection VL to AR 413 with flat duct + alu flex tube NW 150



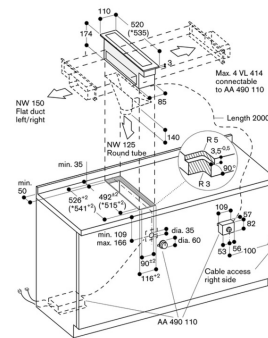
VL414110
 Vario downdraft ventilation 400 series
 Stainless Steel
 Vaentilation element.
 Air extraction/recirculation with remote
 fan unit AR 400/401/413
 Comes without blower and AA 490
 control knob.
 2013-11-26
 Page 3



VL 414 with AD 724 040/041



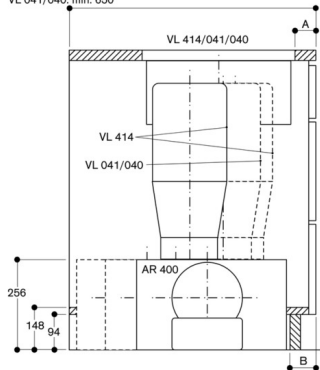
* with compensating strip
 flat duct pipe connection left/right
 NW 150 with AD 854 046
 round duct pipe connection lower
 NW 125 with AD 724 040
 round duct pipe connection left/right
 NW 125 with AD 724 040 + AD 724 041
 observe separate planning notes for
 - control knob positioning
 - configuration for flexible performance distribution



* with compensating strip
 flat duct pipe connection left/right
 NW 150 with AD 854 046
 round duct pipe connection lower
 NW 125 with AD 724 040
 round duct pipe connection left/right
 NW 125 with AD 724 040 + AD 724 041
 observe separate planning notes for
 - control knob positioning
 - configuration for flexible performance distribution

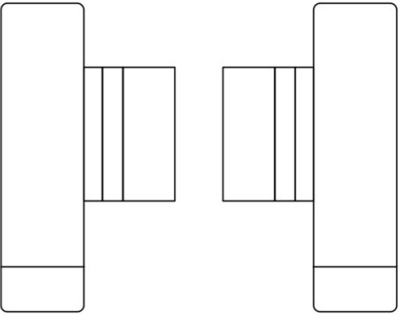
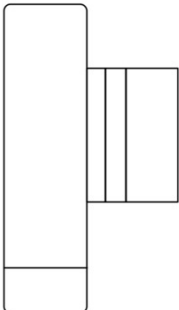
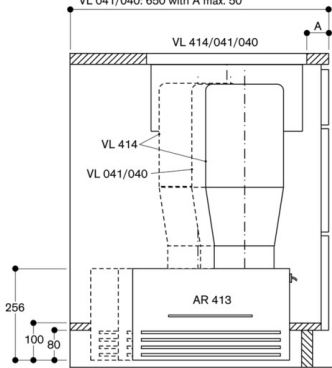
VL414110
Vario downdraft ventilation 400 series
Stainless Steel
Vaentilation element.
Air extraction/recirculation with remote
fan unit AR 400/401/413
Comes without blower and AA 490
control knob.
2013-11-26
Page 4

Connect VL to AR 400 with flat duct NW 150
for maximum output
VL 414: 600/750 depending on front distance A and base dimension B
VL 041/040: min. 650

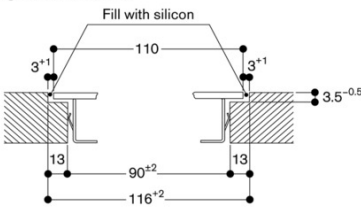


Connect VL to AR 413 with flat duct NW 150
for maximum output

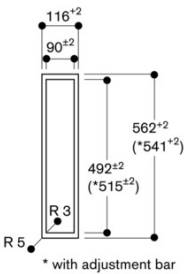
VL 414: 600/750 depending on front distance A
VL 041/040: 650 with A max. 50

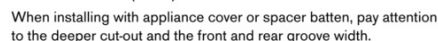
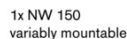


Longitudinal section



View from above





View from above

