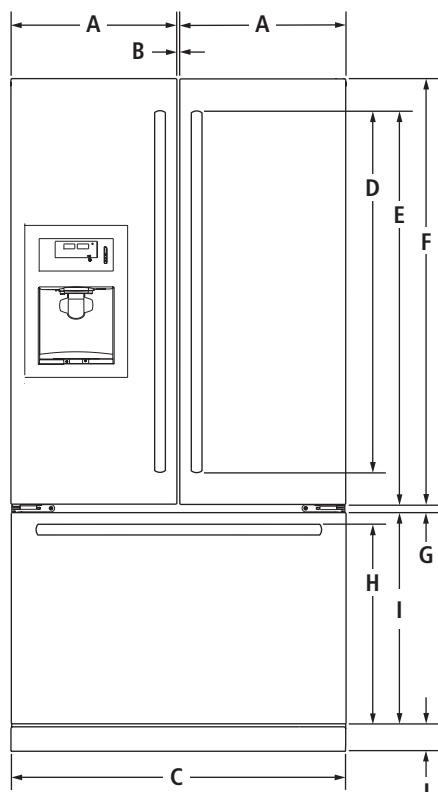


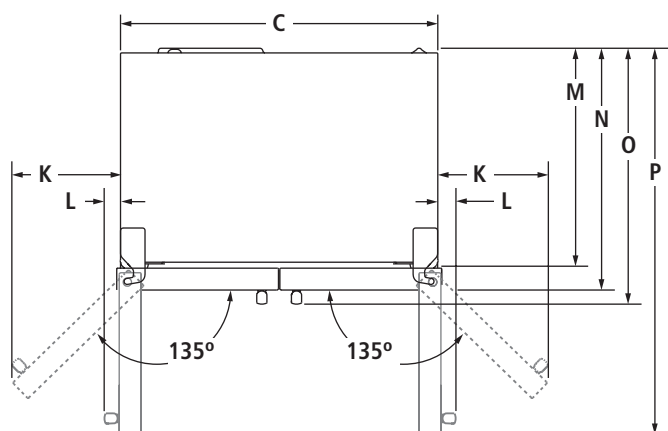
69" COUNTER-DEPTH FRENCH DOOR REFRIGERATOR WITH EXTERNAL DISPENSER

JFI2089WT – 36" x 70" x 28¾"

PRODUCT DIMENSIONS



FRONT VIEW



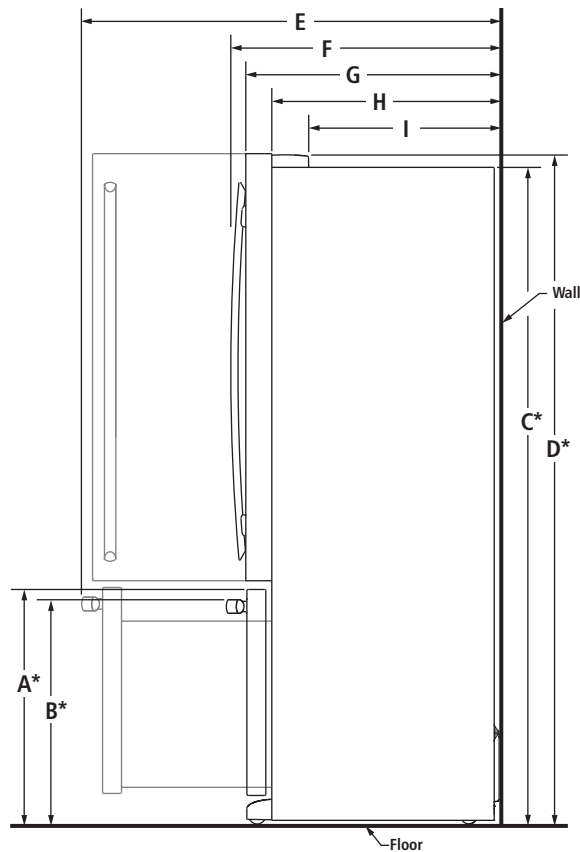
TOP VIEW

MODEL #		JFI2089WT	
		in	cm
A	Width of each door	17 ⁷ / ₈	45.4
B	Space between doors	³ / ₈	1.0
C	Overall width	36	91.4
D	Height of Euro-Style Stainless door handles	37 ⁵ / ₈	95.6
E	Height to top of Euro-Style Stainless door handles	40 ⁷ / ₈	103.8
F	Height of doors	44 ³ / ₈	112.7
G	Space between doors and drawer	⁷ / ₈	2.2
H	Height to top of Euro-Style Stainless drawer handle	20 ⁵ / ₈	52.4
I	Height of drawer	21 ⁷ / ₈	55.6
J	Height of grille	2 ⁷ / ₈	7.3
K	Width from side of refrigerator to door fully open 135°	12 ¹ / ₂	31.8
L	Width from side of refrigerator to Euro-Style Stainless handle – door open 90°	2 ¹ / ₄	5.7
M	Depth without doors	24	61.0
N	Depth with doors	26 ³ / ₄	67.9
O	Depth with Euro-Style Stainless handles	28 ³ / ₄	73.0
P	Depth with doors open 90°	43	109.2

69" COUNTER-DEPTH FRENCH DOOR REFRIGERATOR WITH EXTERNAL DISPENSER

JFI2089WT – 36" x 70" x 28¾"

DIMENSIONS AS INSTALLED



SIDE VIEW

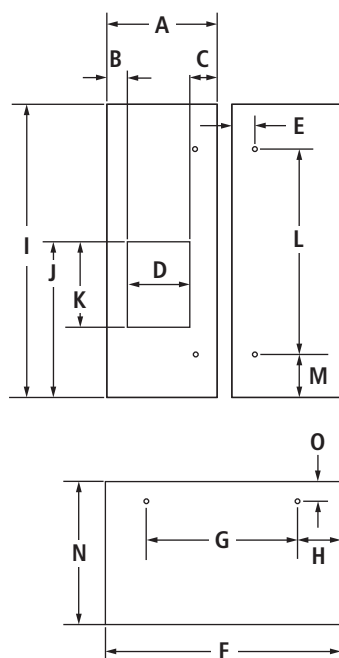
MODEL #		JFI2089WT	
		in	cm
A*	Height to top of drawer (min.)	24 ⁷ / ₈	63.2
B*	Height to top of drawer handle (min.)	23 ⁵ / ₈	60.0
C*	Height of recessed refrigerator (min.)	68 ⁵ / ₈	174.3
D*	Height to top of hinges (min.)	70	177.8
E	Depth with drawer fully open including drawer handle (min.)	43 ⁷ / ₈	111.4
F	Depth with handles (min.)	28 ³ / ₄	73.0
G	Depth with doors (min.)	26 ³ / ₄	67.9
H	Depth without doors (min.)	24	61.0
I	Depth to back of hinges (min.)	20 ¹ / ₈	51.1

*Add ¾" (1.9 cm) to the height dimension when leveling legs are fully extended.

69" COUNTER-DEPTH FRENCH DOOR REFRIGERATOR WITH EXTERNAL DISPENSER

JFI2089WT – 36" x 70" x 28¾"

PANEL DIMENSIONS



		Front Panels	
		in	cm
A	Width of refrigerator door panels	17⅝	44.7
B	Width to left edge of dispenser	1⅝	4.1
C	Width to right edge of dispenser	5¾	14.5
D	Width of dispenser	10¼	26.0
E	Width to center of hole for refrigerator handle*	17⅝	4.7
F	Width of freezer drawer panel	35¾	90.6
G	Width between holes for freezer handle*	23⅝	59.8
H	Width to center of hole for freezer handle*	6⅝	15.4
I	Overall height of refrigerator door panels	44⅛	112.0
J	Height to top of dispenser	28	71.1
K	Height of dispenser	15⅛	38.4
L	Height between holes for refrigerator handle*	30¾	78.1
M	Height to center of hole for refrigerator handle*	6¼	17.0
N	Height of freezer drawer panel	21½	54.6
O	Height to center of hole for freezer handle*	1⅝	4.1

*Drill a ¼" (0.6 cm) diameter hole to accommodate set screws for door handles.

WEIGHT REQUIREMENTS FOR PANEL INSERTS

- Each refrigerator door panel should not exceed 15 lb (7 kg).
- Freezer drawer panel should not exceed 15 lb (7 kg).

PANEL THICKNESS

Flat panel should be ¼" (0.6 cm) thick.

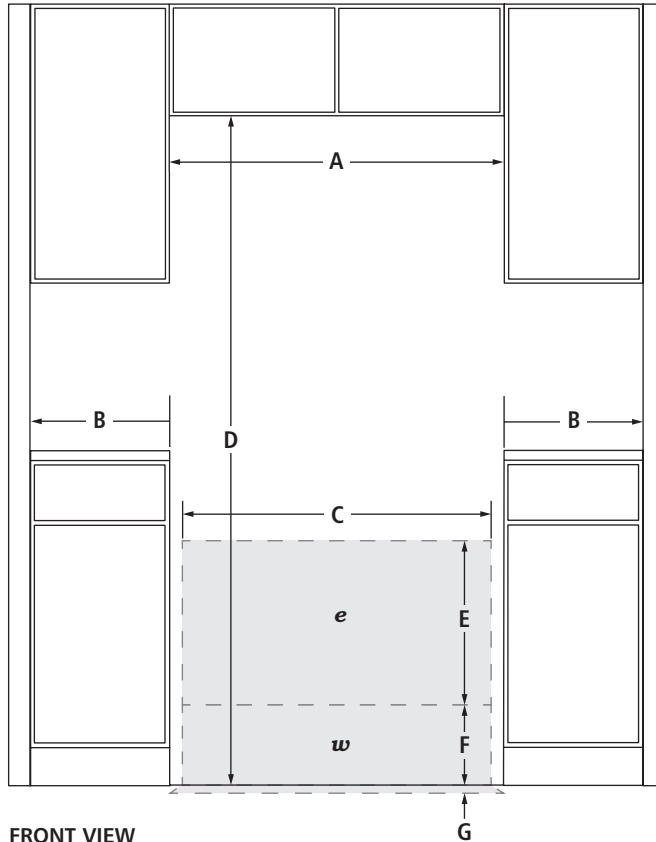
FINISHING REQUIREMENT

Inside refrigerator door edges are not trimmed. Installed wood panel edges will be exposed and require finishing.

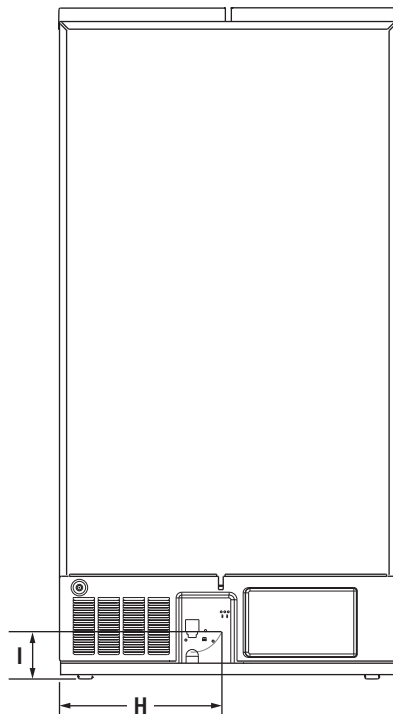
69" COUNTER-DEPTH FRENCH DOOR REFRIGERATOR WITH EXTERNAL DISPENSER

JFI2089WT – 36" x 70" x 28¾"

OPENING/CLEARANCE DIMENSIONS



FRONT VIEW



BACK VIEW

MODEL #		JFI2089WT	
		in	cm
A	Width (min.)	37	94.0
B	Minimum width from side of refrigerator to fixed wall – door open 90° (full access to remove bins)	2¼	5.7
	Minimum width from side of refrigerator to fixed wall – door fully open 135°	12½	31.8
C	Width of recommended electrical/water installation area	34	86.4
D	Height (min.)	70	177.8
E	Height of recommended electrical installation area (min.-max.)	10-24	25.4-61.0
F	Height of recommended water installation area	10	25.4
G	Depth of recommended water installation area	1	2.5
H	Water line location – distance from side	17	43.2
I	Water line location – distance from bottom	7	17.8
e	Recommended electrical connection location		
w	Recommended water connection location		

ELECTRICAL REQUIREMENTS

115 volt, 60 Hz, AC only, 15- or 20-amp fused, grounded circuit is required. A dedicated circuit is recommended. Use an outlet that cannot be turned off by a switch.

Minimum length of power cord is 60" (152.0 cm). Do not use an extension cord.

WATER PRESSURE REQUIREMENTS

A cold water supply with water pressure between 30 and 120 psi (207 and 827 kPa) is required to operate the water dispenser and ice maker. Call a licensed, qualified plumber with any questions about the water pressure.

Reverse Osmosis Water Supply

IMPORTANT: The pressure of the water coming out of a reverse osmosis system going to the water inlet valve of the refrigerator needs to be between 30 and 120 psi (207 and 827 kPa).

If a reverse osmosis water filtration system is connected to the cold water supply, the water pressure to the reverse osmosis system needs to be a minimum of 40 to 60 psi (276 to 414 kPa).