

ENERGYGUIDE



Refrigerator-Freezer

- Automatic Defrost
- Bottom-Mounted Freezer
- Without Through-the-Door Ice

General Electric
 Models: GNE26GGD****, GNE26GMD****,
 GNE26GSD****

Capacity: 26.4 Cubic Feet

Estimated Yearly Operating Cost

\$51



\$51

\$63

Cost Range of Similar Models

483 kWh

Estimated Yearly Electricity Use

Your cost will depend on your utility rates and use.

- Cost range based only on models of similar capacity with automatic defrost, bottom-mounted freezer, and without through-the-door ice.
- Estimated operating cost based on a 2007 national average electricity cost of 10.65 cents per kWh.
- For more information, visit www.ftc.gov/appliances.



ENERGY STAR

Canada

ENERGUIDE

Energy consumption / Consommation énergétique

483 kWh
per year / par année

▼ This model / Ce modèle



**Uses least energy /
Consomme le moins
d'énergie**

Similar models
compared

Model number

Type 5

24.5 - 26.4

volume in ft.³ / volume en pi³

GNE26GGD**,**

GNE26GMD**, GNE26GSD******

**Uses most energy /
Consomme le plus
d'énergie**

Modèles similaires
comparés

Numéro du modèle

Removal of this label before first retail purchase is an offence (S.C. 1992, c. 36).
Enlever cette étiquette avant le premier achat au détail constitue une infraction (L.C. 1992, ch. 36).



The **ENERGY STAR**® mark on this EnerGuide label signifies that this is an energy-efficient appliance. Its energy performance meets or exceeds the Government of Canada's high efficiency levels. Use the EnerGuide rating to determine how this appliance compares to other similar models.

La marque **ENERGY STAR**® sur cette étiquette ÉnerGuide signifie que l'appareil est éconergétique et que son rendement énergétique satisfait ou dépasse les niveaux de haute efficacité du gouvernement du Canada. Utilisez la cote ÉnerGuide afin de comparer le rendement de l'appareil avec celui d'autres modèles similaires. 239D4130P005B



**LINE
BLACK**

**DIE STRIKE
(DOES NOT PRINT)**

Customer: General Electric Co.	Size: 5.375" x 7.375"
Part #: 239D4130P005 (Side B)	Art Prep/Date: 02.19.13
Description: ENERGY GUIDE	Special Instructions: UPDATE - R2

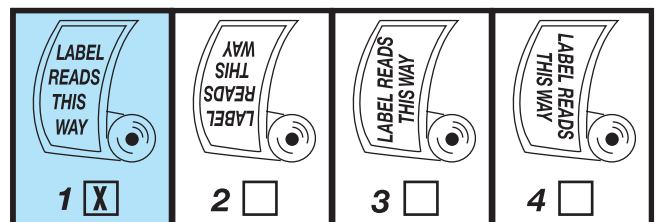
Please check this proof carefully against your original copy and specifications.

ART PROOF ONLY

This proof must be signed, or we cannot proceed with production of this label.

UNWIND CHART

LABEL SIDE OUT



SIGNATURE OF CUSTOMER

PROOF O.K. APPROVAL DATE: _____

PROOF O.K. WITH CORRECTIONS OR ALTERATIONS AS INDICATED.

MAKE CORRECTIONS OR ALTERATIONS AS INDICATED, AND SHOW A REVISED PROOF.