

## Futura Series

### Fully Integrated Dishwashers

CLASSIC G 4281 SCVi

DIMENSION G 5670 SCVi



**ADA**  
COMPLIANT

# Futura Series Dishwashers

## Model Overview

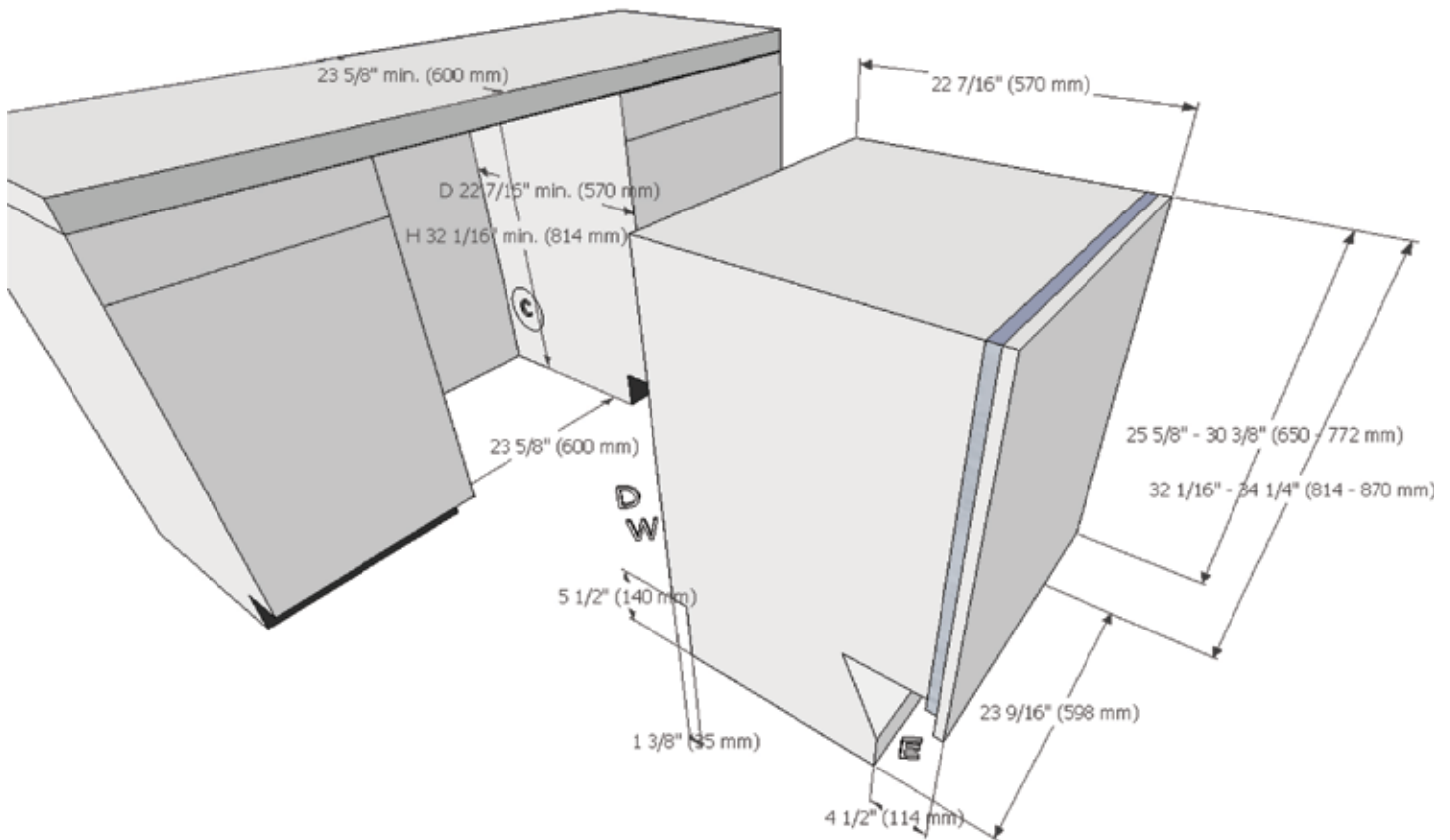


		CLASSIC	CRYSTAL	DIMENSION	DIMENSION SLIMLINE	DIAMOND	PROFI LINE
Baskets	FlexiCare	•					
	FlexiCare Plus		•		•		
	FlexiCare Premium			•			
	FlexiCare Deluxe					•	•
Cutlery	Cutlery basket	•	•				
	Cutlery tray	•	•		•		
	3D cutlery tray			•		•	•
Convenience	AutoClose					•	•
	BrilliantLight					•	•
	Delay Start	•	•	•		•	•
	RemoteVision™					•	
	ComfortClose	•	•	•		•	•
	Perfect GlassCare		•	•	•	•	•
	Water softener		•	•	•	•	•
	ADA compliant*	•*		•*	•		
	Q Acoustic ratings	Q1	Q2	Q4	Q3	Q5	Q1
Sensors	AutoSensor	•	•	•	•	•	
	SensorDry			•		•	
	Automatic Load-Size Sensor					•	
Finishes	Pre-finished (Black or White)	•	•				
	Pre-finished (Clean Touch Steel™)	•	•	•			
	Integrated - I (Clean Touch Steel™)			•	•	•	
	Fully Integrated - Vi (Custom Panel)	•		•	•	•	•
	Fully Integrated - SC SF (Clean Touch Steel™)	•	•	•		•	
Programs	Normal	•	•	•	•	•	
	Express		•		•	•	
	Rinse & Hold	•	•	•	•	•	
	SaniWash	•	•	•	•	•	
	Pots & Pans	•	•	•	•	•	•
	Economy	•					
	China & Crystal		•	•	•	•	•
	Turbo Mode	•	•	•		•	
	Intensive Mode			•		•	
Diamond Programs	ExtraQuiet			•		•	
	Heavy Soil					•	
	SensorWash					•	
	Light					•	
	Energy Saver					•	
	Plastics					•	•
	Starch/Cheese					•	
	Tall Items					•	
	Glass - No Rinse Aid (Warm)					•	
	Glass - No Rinse Aid (Cold)					•	
Profiline Programs	ProSpeed 23 minute cycle						•
	Universal						•
	Sanitize						•
	Beer Glasses						•
Drying	CleanAir™	•	•	•	•	•	•
	Advanced CleanAir™					•	•
	AutoOpen™ Drying			•		•	•

\* Classic G 4281 SCVi and Dimension G 5670 SCVi are ADA compliant

# Futura Series Fully Integrated Dishwashers

## ADA Compliant



### Location Codes

**C** - Cutout 1 3/8" x 1 3/4" (34 mm x 35 mm) for water, drain and electric pass-through.

Adjust according to water and drain location.

**D** - 5 foot (1.5 meter) flexible drain hose connects lower center rear.

**E** - 5 foot (1.5 meter)– 120 Volt – 15 Amp 3-wire molded plug power supply connects front terminal or can be hardwired.

**W** - 5 foot flexible water intake hose with a 3/8" compression fitting nut connects lower center rear.

### Notes

All installations must be done in accordance with local codes.

Drawing is not to scale

Specification Sheets OJS 11012011

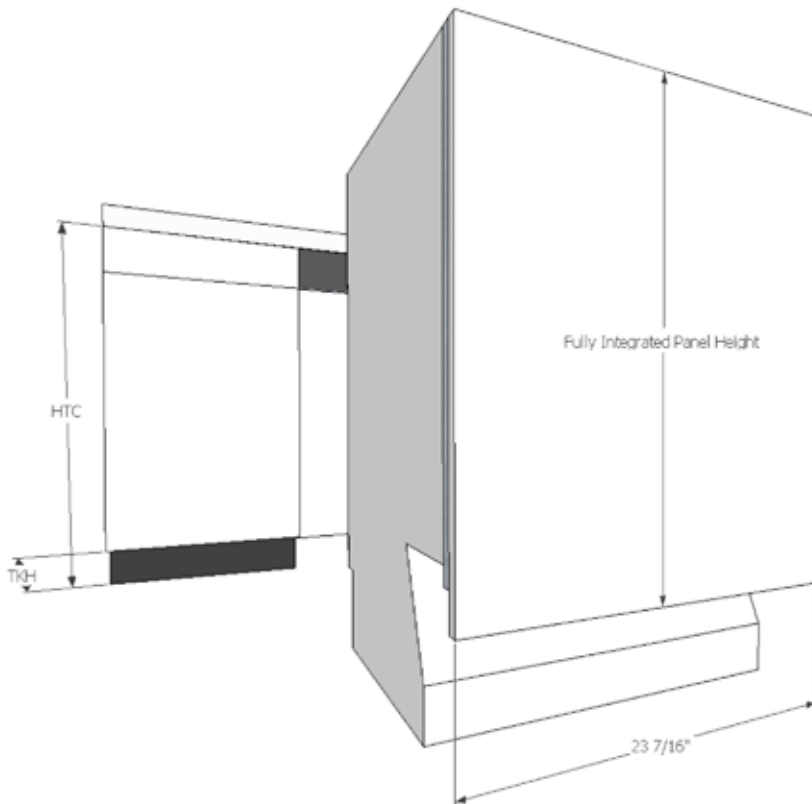
# Futura Series Fully Integrated Dishwashers

## ADA Compliant



### Custom Panel Installations

Some Miele dishwashers do not come equipped with a front panel. These dishwashers are designed to accept a custom door panel supplied by the cabinet maker. Miele has a unique panel integration system which allows the dishwasher to align with the surrounding cabinets.



**Width:** 23 7/16" (598 mm) in all cases

**Thickness:** 3/4" (19 mm) in all cases

**Height:** Determined using the following calculation:

$$\text{Panel Height} = \text{HTC} - \text{TKH}$$

**HTC** = Height to the underside of countertop

**TKH** = Toe kick height

**Note:** Control panel is along the top edge of the unit. It is not visible when the unit is closed. A handle **MUST** be located on the front panel in order to open the unit.

Maximum panel height: 30 3/8" (772 mm)

Minimum panel height: 25 5/8" (650 mm)

Maximum panel weight: 21 Pounds (9.5 kg)

### GFVI Installations

Miele offers pre-fabricated stainless steel panels for all fully integrated units. These panels are designed for various toe-kick heights and offer a choice of handle options.

Drawing is not to scale

Specification Sheets OJS 11012011

# Futura Series Fully Integrated Dishwashers

## ADA Compliant



		Height to underside of countertop								
		32 1/4	32 1/2	32 3/4	33	33 1/4	33 1/2	33 3/4	34	34 1/4
Toe Kick Height	2									
	2 1/2									
	3									
	3 1/2									
	4									
	4 1/2									
	5									
	5 1/2									
	6									
	6 1/2									
	7									
	7 1/2									
	8									
	8 1/2									
				Acceptable combinations						

Drawing is not to scale

Specification Sheets OJS 11012011