

# EG366, EG486

Document # PG04-001

Revised 09/27/12 Page 1/4



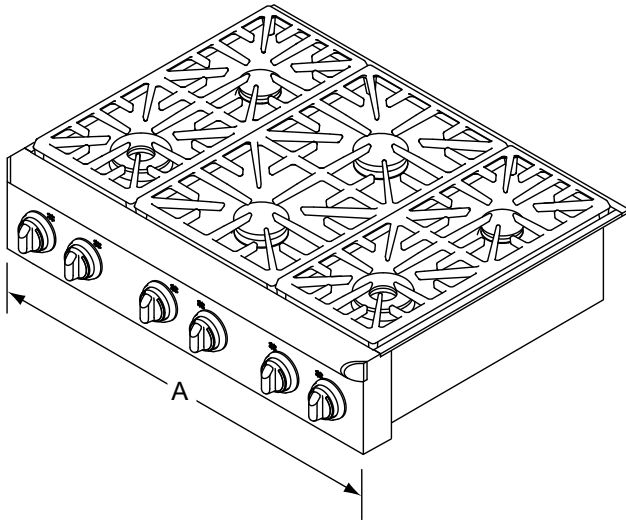
## Discovery™ 36" and 48" Wide Slide-in Gas Cooktops

## PLANNING GUIDE

### ⚠ WARNING

- Observe all governing codes and ordinances during planning and installation. Contact your local building department for further information.
- This appliance must be installed in accordance with the accompanying installation instructions.

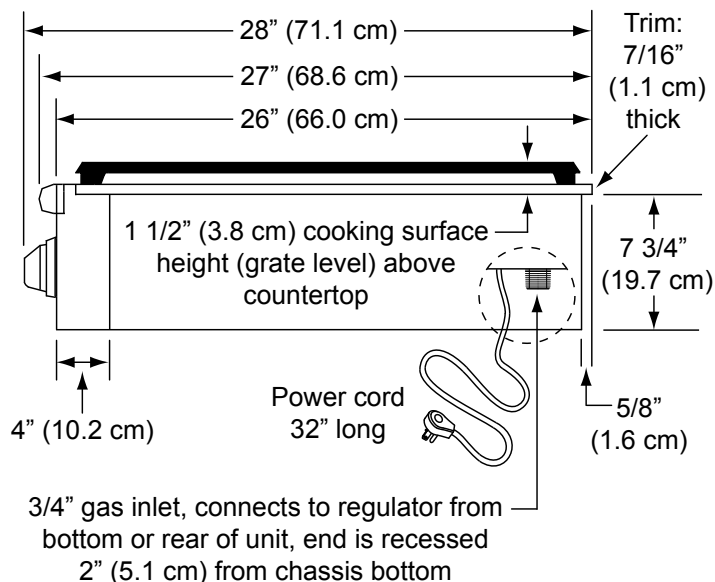
Product tolerances:  $\pm 1/16"$  ( $\pm 1.6$  mm) unless otherwise noted



**PRODUCT DIMENSIONS - ISO VIEW**

**A - Width**

EG366	35 7/8" (91.1 cm)
EG486	47 7/8" (121.6 cm)



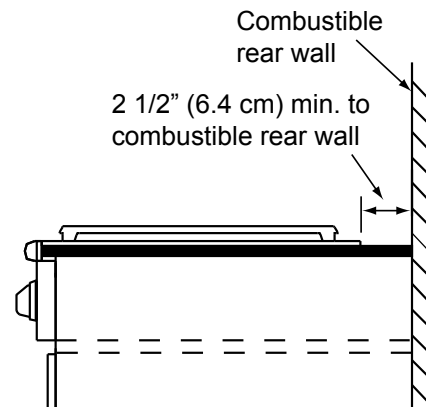
**PRODUCT DIMENSIONS - SIDE VIEW**

ELECTRIC CIRCUIT REQUIREMENTS	
Circuit Required	Total Connected Load
120 Vac 60Hz, 15 Amp. (3 wire)	0.25 Amp @ 120 Vac, 60 Hz

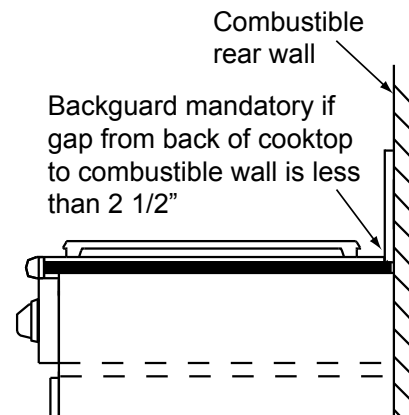
GAS SUPPLY PRESSURE REQUIREMENTS*		
Gas Type	Manifold Pressure	Minimum Gas Supply Pressure
Natural Gas	5" Water Column	6" Water Column
Propane (LP)	10" Water Column	11" Water Column

\* Maximum gas supply pressure for all models is 1/2 psi

**IMPORTANT:** Installation of a non-combustible material\* (up to the hood) or a backsplash is always recommended, and mandatory if the distance to the back wall from the cooktop is less than 2 1/2" (Figure 2). When installing a backguard, use only Dacor model numbers AEB3609, AEB3612 (EG366), AEB4809 or AEB4812 (EG486).



**CABINET/COUNTERTOP SIDE VIEW WITHOUT BACKGUARD**



**CABINET/COUNTERTOP SIDE VIEW WITH BACKGUARD**

# EG366, EG486

Document # PG04-001

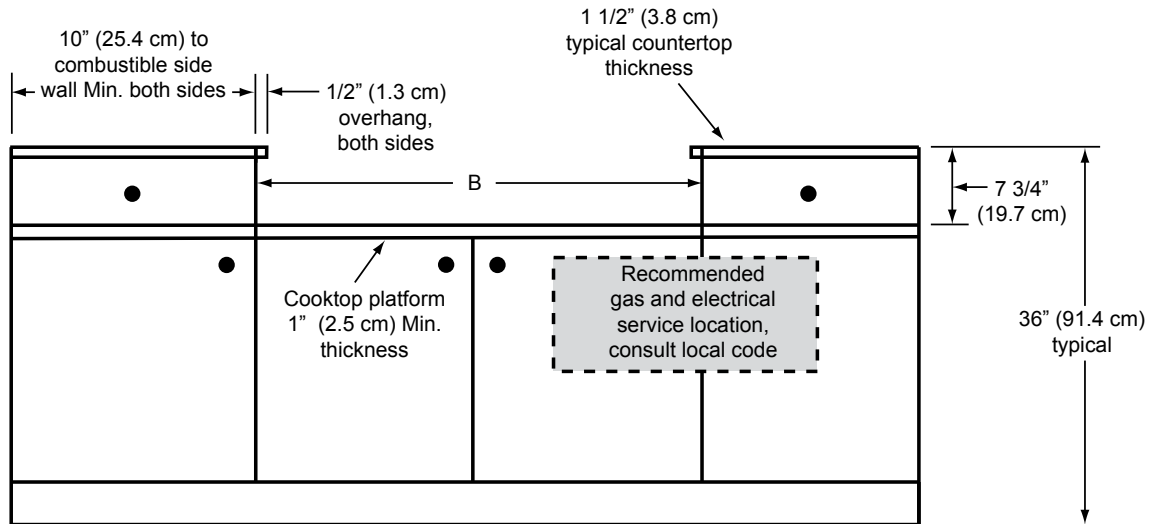
Revised 09/27/12 Page 2/4



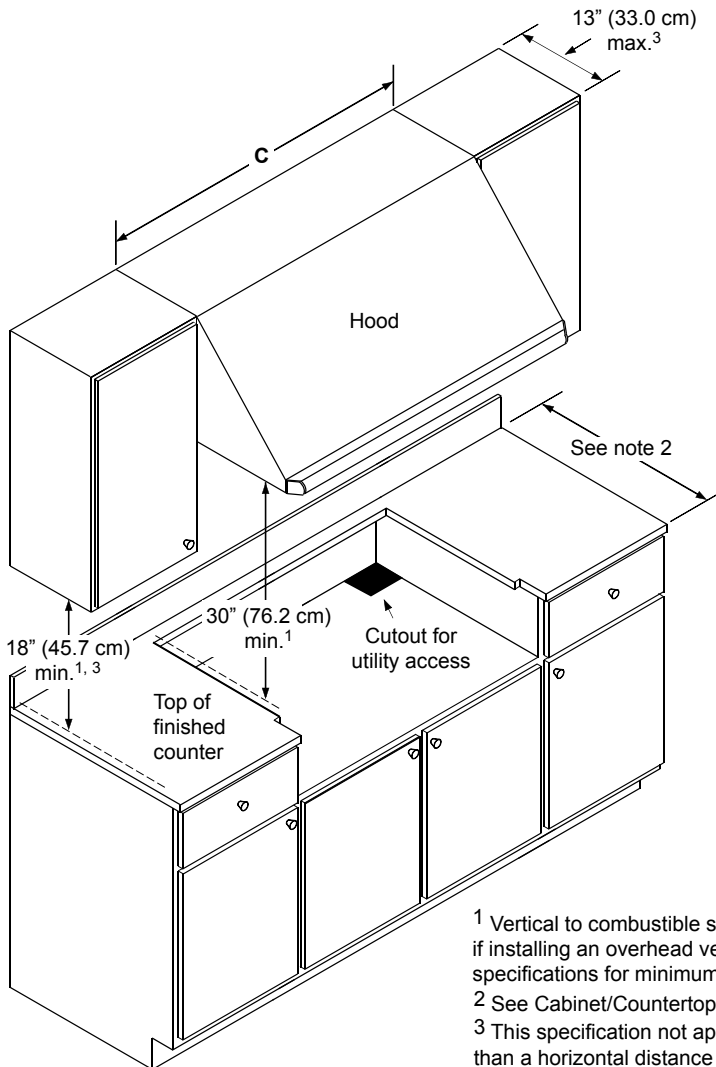
## Discovery 36" and 48" Wide Slide-in Gas Cooktops

## PLANNING GUIDE

Cabinet tolerances: +1/16" (+1.6 mm), -0 unless otherwise noted.



**CABINET/COUNTERTOP DIMENSIONS - FRONT VIEW**



Model No.	B	C
EG366	36" (91.4 cm)	36" (91.4 cm)* 42" (106.7 cm)**
EG486	48" (121.9 cm)	48" (121.9 cm)* 54" (137.2 cm)**
* Minimum ** Recommended		

**CABINET/COUNTERTOP DIMENSIONS -  
ISO VIEW**

- 1 Vertical to combustible surface from cooktop grate level; if installing an overhead vent hood, also check the hood specifications for minimum required clearances.
- 2 See Cabinet/Countertop Dimensions - Top View
- 3 This specification not applicable for cabinets more than a horizontal distance of 10" (25.4 cm) from the edge of the cooktop.

continued on following pages...

# EG366, EG486

Document # PG04-001

Revised 09/27/12 Page 3/4

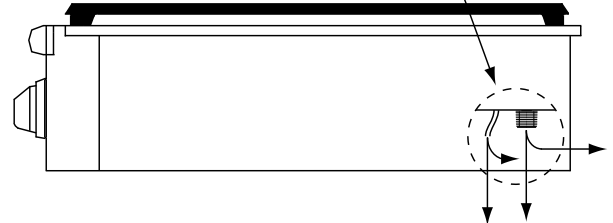


## Discovery 36" and 48" Wide Slide-in Gas Cooktops

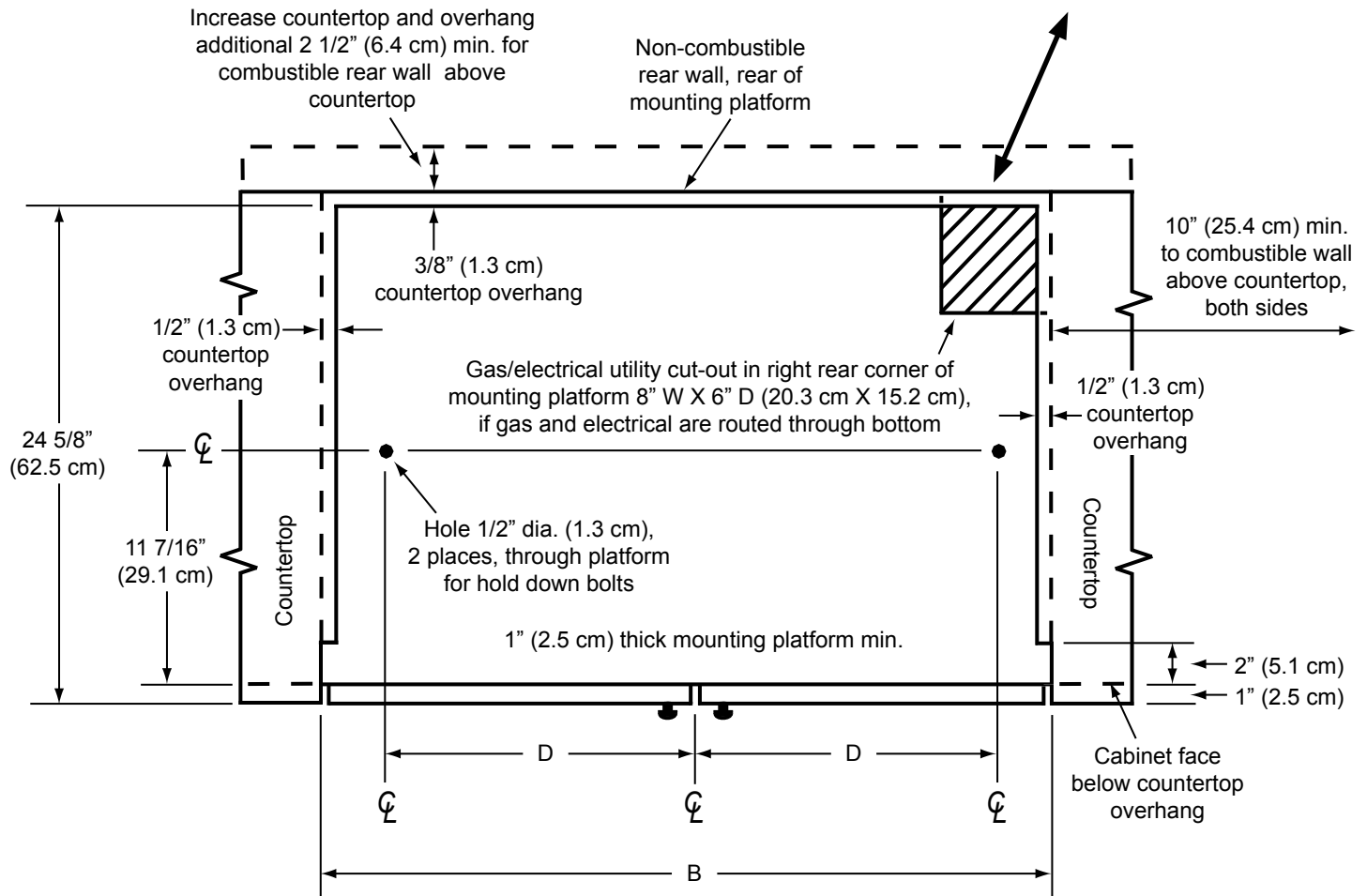
## PLANNING GUIDE

Cutout tolerances: +1/16" (+1.6 mm), -0 unless otherwise stated

Gas and electrical connections at  
right rear section of chassis



Gas connection and power cord may be  
routed through bottom or back of chassis



**CABINET/COUNTERTOP CUTOUT DIMENSIONS WITHOUT RAISED VENT - TOP VIEW**

Model No.	B - Cutout Width	D - Hole Offset
EG366	36" (91.4 cm)	16 5/8" (42.2 cm)
EG486	48" (121.9 cm)	20 13/16" (52.9 cm)

# EG366, EG486

Document # PG04-001

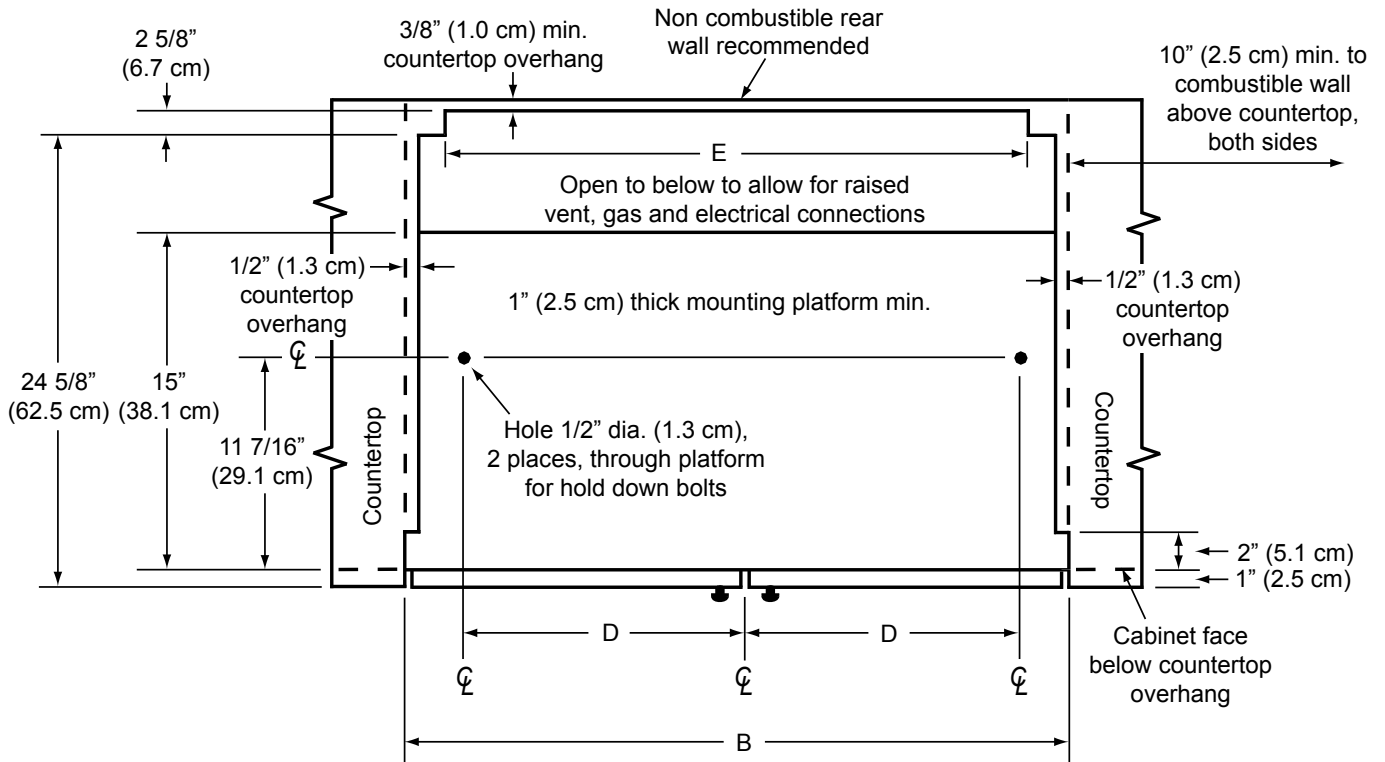
Revised 09/27/12 Page 4/4



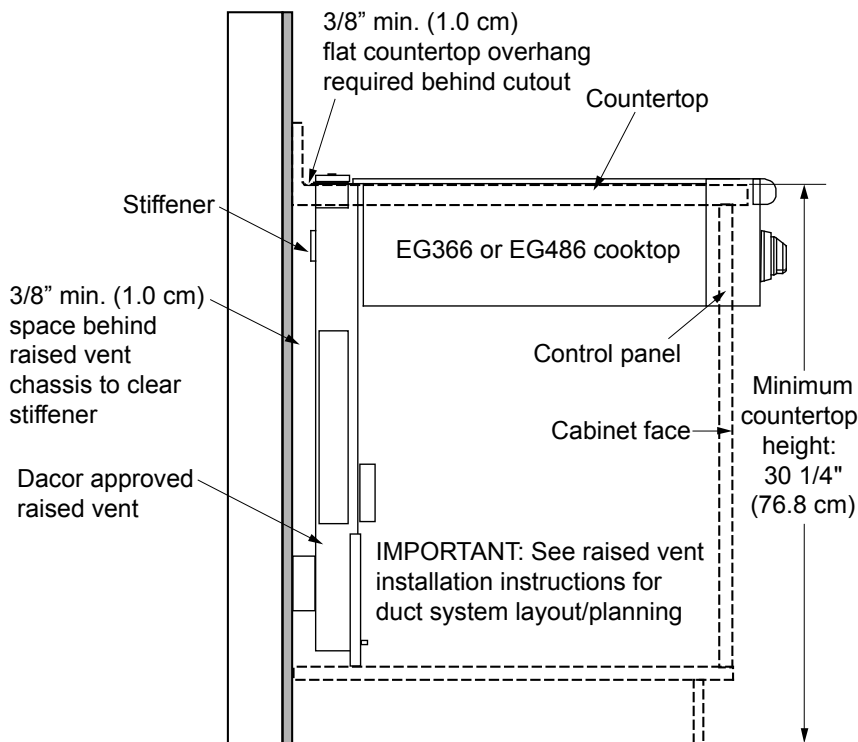
## Discovery 36" and 48" Wide Slide-in Gas Cooktops

## PLANNING GUIDE

Cutout tolerances: +1/16" (+1.6 mm), -0 unless otherwise stated



**CABINET/COUNTERTOP CUTOUT DIMENSIONS WITH RAISED VENT - TOP VIEW**



**CABINET/COUNTERTOP CUTOUT DIMENSIONS  
WITH RAISED VENT - SIDE VIEW**

Model No.	Approved Raised Vent Models
EG366	ERV36, ERV3615, PRV36
EG486	ERV48, PRV48

**IMPORTANT:** Use only the raised vents specified.

Model No.	B - Cutout Width	D - Hole Offset	E - Raised Vent Cutout
EG366	36" (91.4 cm)	16 5/8" (42.2 cm)	33 1/2" (85.1 cm)
EG486	48" (121.9 cm)	20 13/16" (52.9 cm)	43 1/2" (110.5 cm)

