



ELECTRIC GRILL OWNER'S GUIDE

You must read this Owner's Guide before operating your electric grill.

MANUAL DEL USUARIO - Pg 13

MANUEL UTILISATEUR DU GRILL ELECTRIQUE - Pg 21

PLACE STICKER HERE



WARNING!
POTENTIAL SHOCK
HAZARD

This appliance is Rated for
120 volts - 50/60 Hz
Output: 1500 W
Use only Weber Q140TC temperature-
controlling plug.

⚠ This grill is intended for outdoor household use only. Do not use indoors or for commercial cooking. Fuel, such as charcoal briquettes, is not to be used with appliance.



⚠ The supply cord should be regularly examined for signs of damage and the appliance is not to be used if the cord is damaged.

IMPORTANT SAFEGUARDS

When using electrical appliances, basic safety precautions should always be followed including the following:

- ⚠ Read all instructions.
- ⚠ CAUTION: Grill brushes should be checked for loose bristles and excessive wear on a regular basis. Replace brush if any loose bristles are found on cooking grates or brush. Weber recommends purchasing a new stainless steel grill brush at the beginning of every spring.
- ⚠ CAUTION: To ensure continued protection against risk of electric shock, connect to properly grounded three prong GFI outlets only. Do not use a two prong adapter.
- ⚠ WARNING: Use only outdoors, do not expose to rain. This is to prevent electric shock which can cause serious bodily injury or death.
- ⚠ WARNING: Disconnect appliance from supply circuit before performing maintenance and cleaning.
- ⚠ WARNING: For protection against risk of electric shock, connect to properly grounded outlets only.
- ⚠ WARNING: For protection against risk of electric shock, keep extension cord connection dry and off the ground.
- ⚠ CAUTION: Store Temperature Controller indoors when not in use.
- ⚠ Do not place on or near a hot gas or electric burner, or in a heated oven.
- ⚠ Use extreme caution when removing tray or disposing of hot grease.
- ⚠ Do not clean with metal scouring pads. Pieces can break off the pad and touch electrical parts, creating a risk of electric shock.
- ⚠ Do not use charcoal in this appliance.
- ⚠ Do not touch surfaces that may be hot. Use handles or knobs provided.
- ⚠ To protect against electrical shock do not immerse cord, plugs, portable appliances (or other specific part or parts) in water or other liquid.
- ⚠ Close supervision is necessary when any appliance is used by or near children.
- ⚠ Make sure appliance is OFF and remove plug from outlet when not in use, before putting on or taking off parts, and before cleaning. Allow to cool before handling.
- ⚠ Do not operate any appliance with a damaged cord or plug or after the appliance malfunctions or is dropped or damaged in any manner. Contact the Customer Service Representative in your area using the contact information on our web site. Log onto www.weber.com.
- ⚠ The use of accessories not recommended by Weber may cause damage or injuries.
- ⚠ Do not let cord hang over edge of table or counter or touch hot surfaces.
- ⚠ Where applicable, always attach plug to appliance and check that the control is OFF before plugging cord into wall outlet. To disconnect, turn the control to OFF, then remove plug from wall outlet.
- ⚠ Do not use appliance for other than intended use.
- ⚠ Avoid contacting moving parts.



SAVE THESE INSTRUCTIONS

41121 US 10/31/12
ENGLISH

IMPORTANT SAFEGUARDS

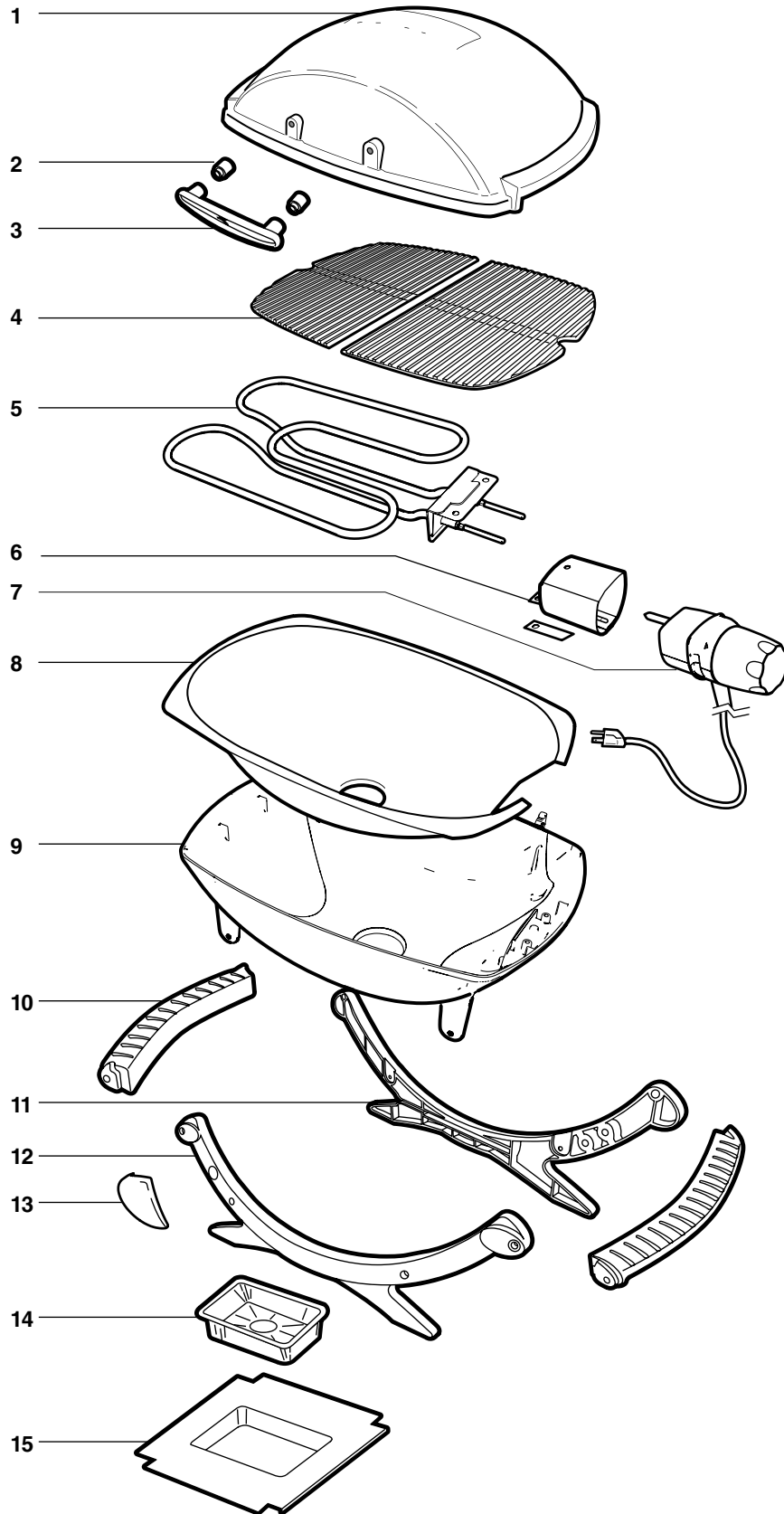
⚠ DANGER

Failure to follow the Dangers, Warnings and Cautions contained in this Owner's Manual may result in serious bodily injury or death, or in a fire or an explosion causing damage to property.

⚠ WARNINGS

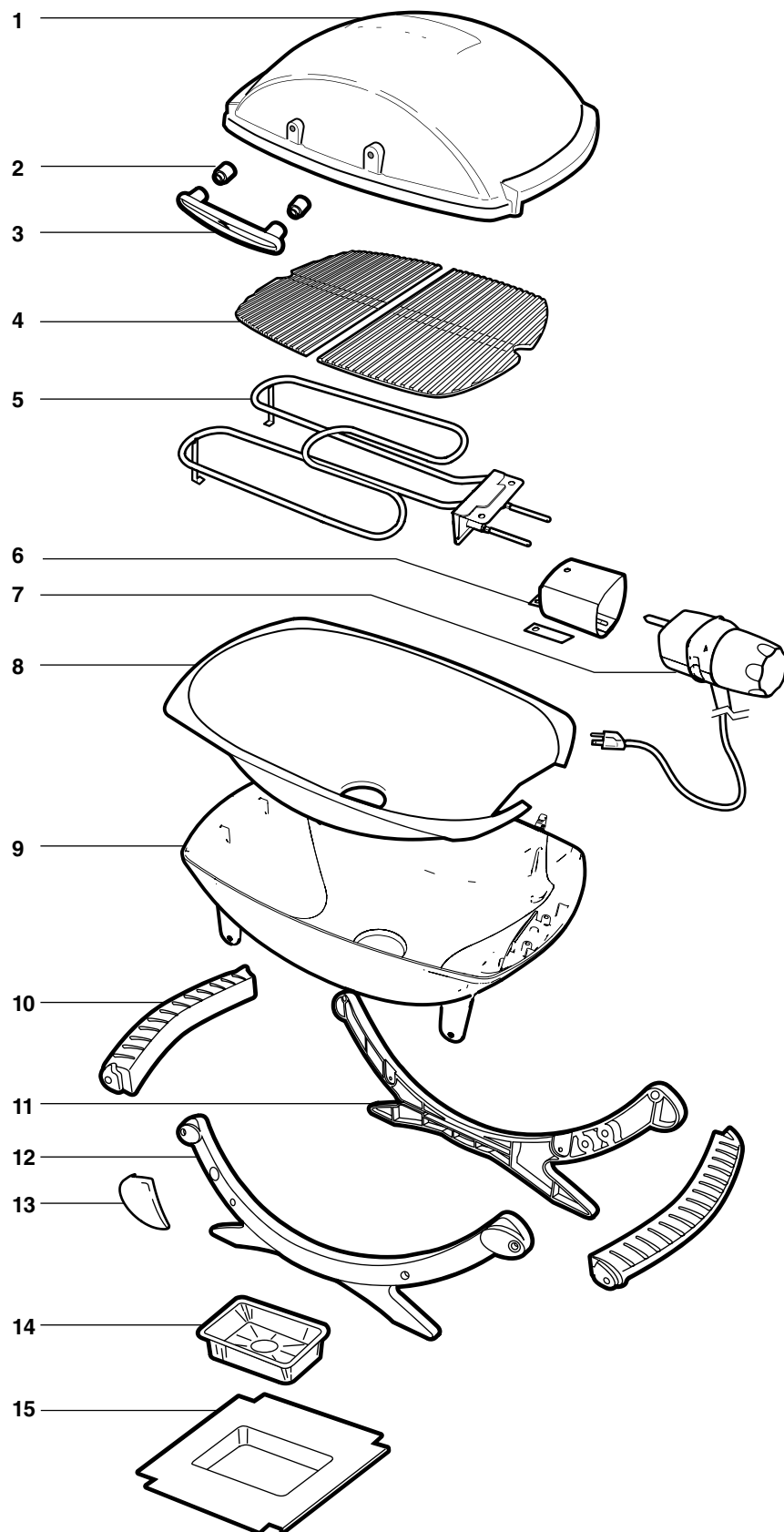
- ⚠ **WARNING:** Do not use charcoal or other combustible fuels in this grill. This grill is not designed for charcoal use and a fire could result. The fire could create an unsafe condition and damage to the grill.
- ⚠ Always plug Temperature Controller into grill before plugging power cord into outlet.
- ⚠ Do not operate unit if plug receptacle is damaged.
- ⚠ Operate grill only on a level, stable surface.
- ⚠ Do not in any way alter this product or its use.
- ⚠ If using an extension cord it must be rated no less than that of the appliance. Extension cords must be marked with the letter "W" and with a tag stating, "Suitable for use with outdoor appliance".
- ⚠ Use shortest length extension cord possible. Do not connect 2 or more extension cords together.
- ⚠ Do not immerse grill or Temperature Controller in water when cleaning.
- ⚠ Do not leave Temperature Controller in the ON position during periods of non-use.
- ⚠ Do not leave grill unattended when in use.
- ⚠ Keep children and pets away from grill when in use.
- ⚠ Young children should be supervised to ensure that they do not play with the appliance.
- ⚠ This appliance is not intended for use by young children or infirm persons unless they have been adequately supervised by a responsible person to ensure that they can use the appliance safely.
- ⚠ Clean grease catch pan regularly.
- ⚠ Locate power cord away from traffic areas. Arrange the cord so that it will not be pulled or tripped over.
- ⚠ Do not use grill near combustible materials such as dry grass, shrubs, etc.
- ⚠ Do not allow grill to come into close contact with flammable materials such as paper, walls, draperies, towels, chemicals, etc.
- ⚠ Do not use as a heater.
- ⚠ Do not move the grill while it is in use. Allow the appliance to cool before moving, cleaning or storing it.
- ⚠ Do not use grill when raining or snowing.
- ⚠ To prevent grill from being splashed or falling into water, do not use grill within 10 feet of any body of water such as a pool or pond.
- ⚠ Do not operate grill with a Temperature Controller that has a damaged cord or plug. Call Weber for a replacement Temperature Controller. The Temperature Controller is made specifically for this grill.
- ⚠ Pulling Temperature Controller by the knob could cause the knob to come off. Remove Temperature Controller by gripping on it's side (Refer to "MAINTENANCE").
- ⚠ Do not allow cord to touch the grill when it is hot.
- ⚠ This grill is intended for outdoor household use only. Do not use indoors or for commercial cooking.
- ⚠ If a flare up occurs, do not use water to put out fire. Turn grill to OFF. Unplug power cord and wait for grill to cool.
- ⚠ Make sure no other high wattage appliances are plugged into the same circuit when using grill.
- ⚠ Do not clean this product with a water spray or the like.
- ⚠ Unplug grill when not in use and cover when cool. Properly store the appliance indoors when not in use - out of the reach of children.
- ⚠ Use this grill only as described in this manual. Any other use not recommended in this manual may cause fire, electric shock, or injury to persons.
- ⚠ Always ensure that electrical socket being used has the correct rating. Socket must be rated no less than 120V AC.
- ⚠ This appliance conforms to technical standards and the safety requirements for electrical devices.
- ⚠ The grease catch pan must be in place at all times during grill operation.
- ⚠ Do not build this model of grill in any built-in or slide-in construction. Ignoring this warning could cause a fire or an explosion that may damage property or cause serious bodily injury or death.

Q140_ELECTRIC_US_091311



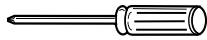
1. **Lid**
Tapa
Couvercle
2. **Ceramic Spacer**
Separador de cerámica
Entretoise céramique
3. **Handle**
Asa
Poignée
4. **Cooking Grate**
Rejilla de cocción
Grille de cuisson
5. **Heat Element Assembly**
Ensamble del elemento calentador
Élément chauffant
6. **Controller Bracket Sleeve**
Manga del soporte del regulador
Manchon de support de bouton de commande
7. **Temperature Controller with Power Cord**
Regulador de temperatura con cordón eléctrico
Bouton de commande de température avec
cordon d'alimentation
8. **Removable Bowl Liner**
Forro de quita y pon del tazón
Doublure de bol démontable
9. **Cookbox**
Caja de cocción
Chambre de cuisson
10. **Handle**
Asa
Poignée
11. **Rear Cradle**
Bastidor posterior de soporte
Socle arrière
12. **Front Cradle**
Bastidor delantero de soporte
Socle avant
13. **Cradle Logo**
Logotipo del bastidor de soporte
Logo de socle
14. **Disposable Drip Pan**
Bandeja de goteo desechable
Lèchefrite jetable
15. **Grease Catch Pan**
Plato recolector
Egouttoir

Q240 _ELECTRIC_US_030212

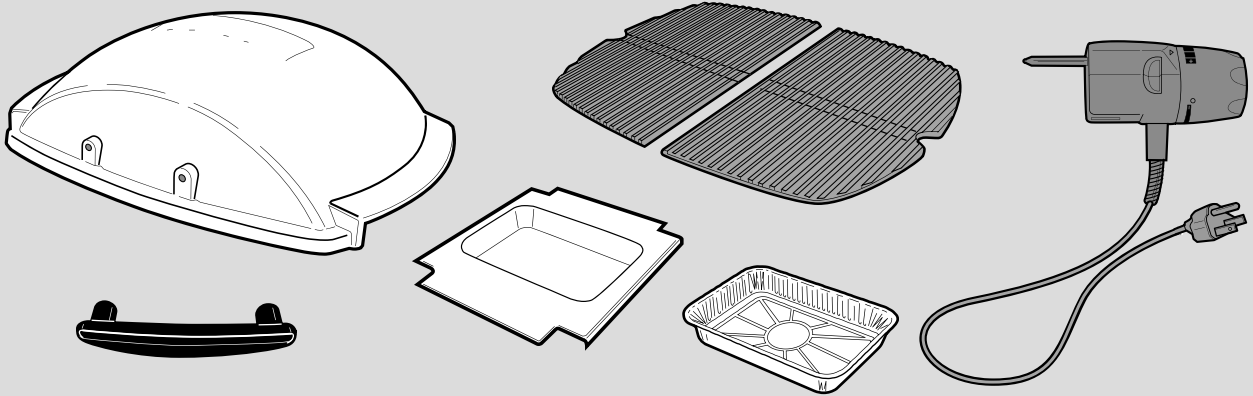


1. **Lid**
Tapa
Couvercle
2. **Ceramic Spacer**
Separador de cerámica
Entretoise céramique
3. **Handle**
Asa
Poignée
4. **Cooking Grate**
Rejilla de cocción
Grille de cuisson
5. **Heat Element Assembly**
Ensamble del elemento calentador
Élément chauffant
6. **Controller Bracket Sleeve**
Manga del soporte del regulador
Manchon de support de bouton de commande
7. **Temperature Controller with Power Cord**
Regulador de temperatura con cordón eléctrico
Bouton de commande de température avec
cordon d'alimentation
8. **Removable Bowl Liner**
Fondo de quita y pon del tazón
Doublure de bol démontable
9. **Cookbox**
Caja de cocción
Chambre de cuisson
10. **Handle**
Asa
Poignée
11. **Rear Cradle**
Bastidor posterior de soporte
Socle arrière
12. **Front Cradle**
Bastidor delantero de soporte
Socle avant
13. **Cradle Logo**
Logotipo del bastidor de soporte
Logo de socle
14. **Disposable Drip Pan**
Bandeja de goteo desechable
Lèchefrite jetable
15. **Grease Catch Pan**
Plato recolector
Egouttoir

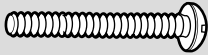
PARTS LIST, LISTE DES PIÈCES, LISTA DE PIEZAS



1-

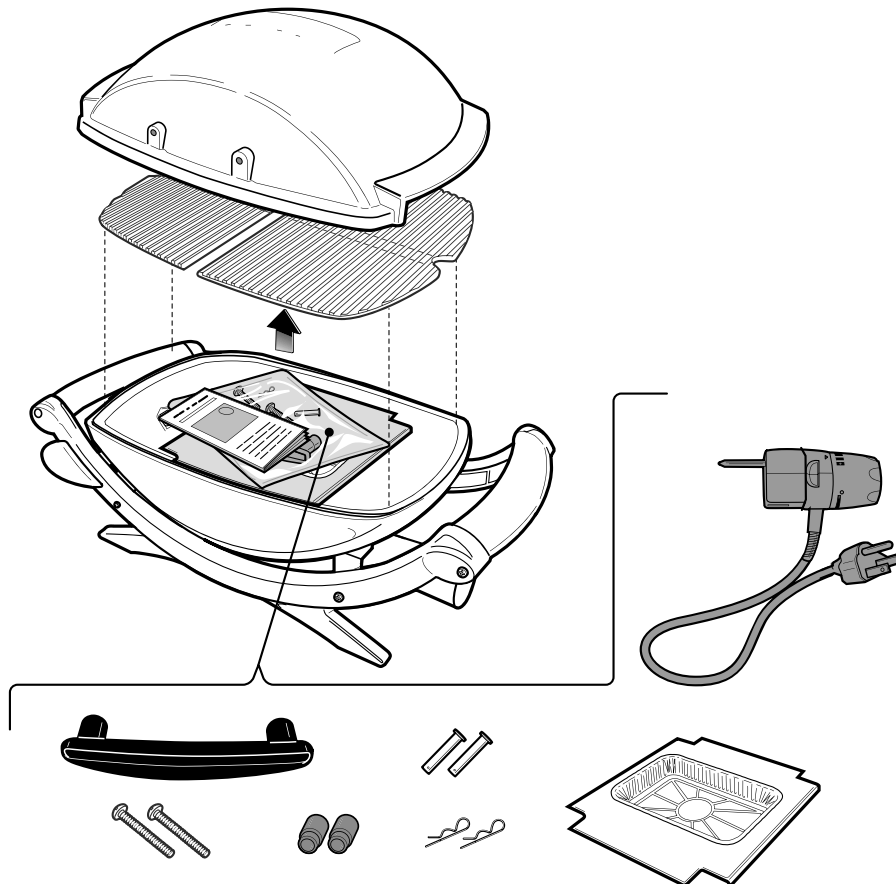


2-

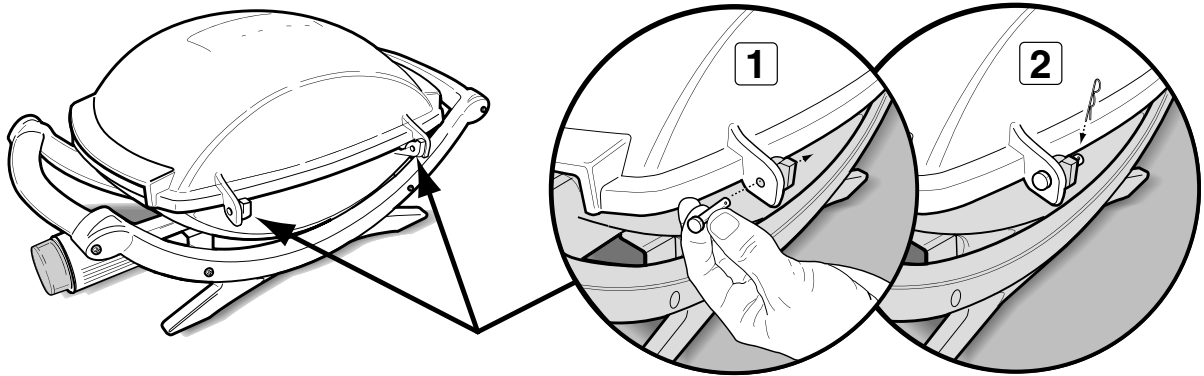


ASSEMBLY, ASSEMBLAGE, ENSAMBLAJE

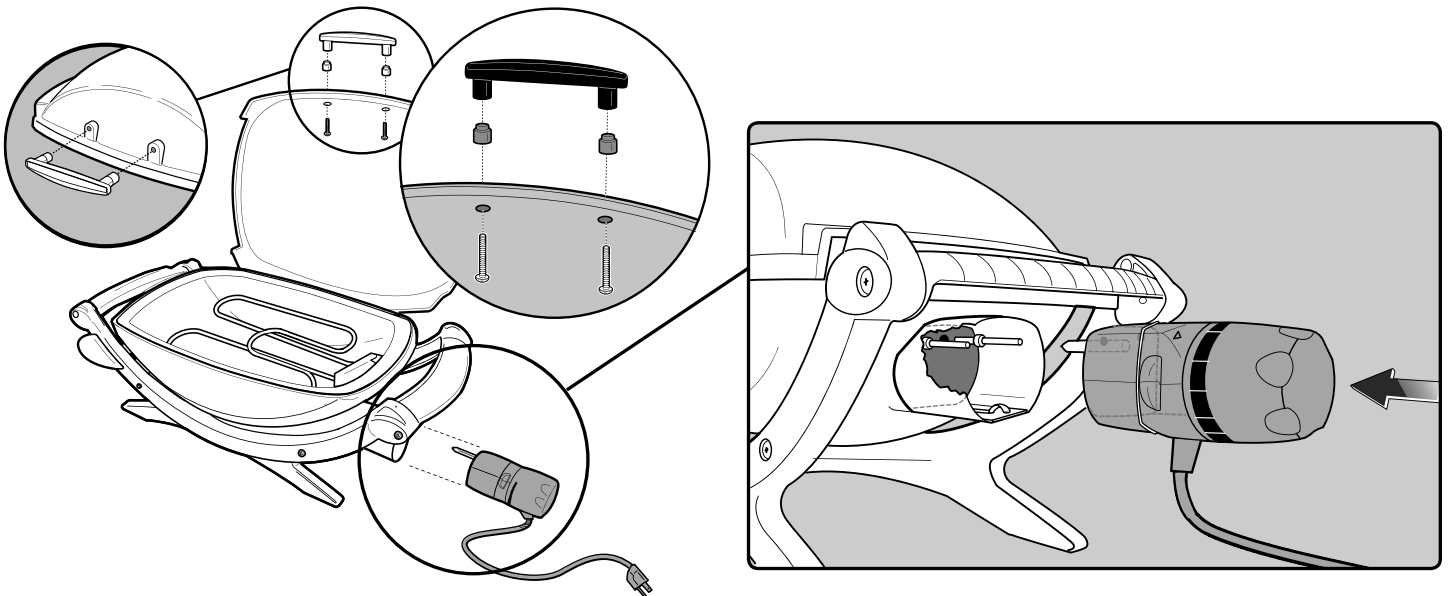
A



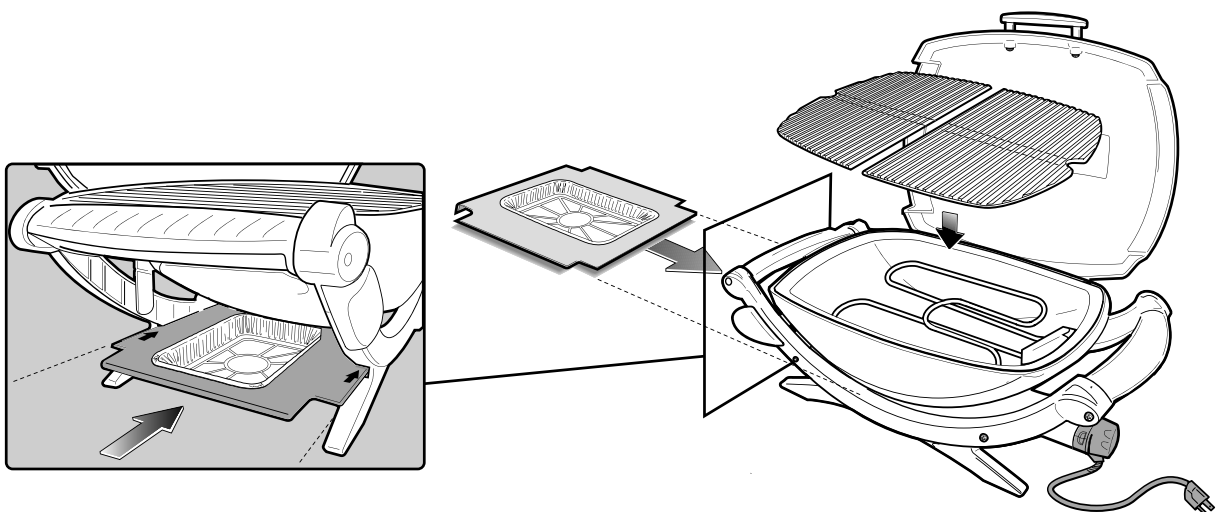
B



C



D



WARRANTY

Weber-Stephen Products LLC (Weber) hereby warrants to the ORIGINAL PURCHASER of this Weber® electric grill that it will be free of defects in material and workmanship from the date of purchase as follows:

Aluminum Castings,	5 years
Heating Element,	2 years
Temperature Controller,	2 years
Thermoplastic/Thermoset Parts,	5 years excluding fading
All Remaining Parts,	2 years when assembled and operated in accordance with the printed instructions that accompany it

Weber may require reasonable proof of your date of purchase. THEREFORE, YOU SHOULD RETAIN YOUR SALES SLIP OR INVOICE.

This Limited Warranty shall be limited to the repair or replacement of parts that prove defective under normal use and service and which on examination shall indicate, to Weber's satisfaction, they are defective. Before returning any parts, please contact the Customer Service Representative in your region using the contact information on our web site. Log onto www.weber.com®. If Weber confirms the defect and approves the claim, Weber will elect to replace such parts without charge. If you are required to return defective parts, transportation charges must be prepaid. Weber will return parts to the purchaser, freight or postage prepaid.

This Limited Warranty does not cover any failures or operating difficulties due to accident, abuse, misuse, alteration, misapplication, vandalism, improper installation or improper maintenance or service, or failure to perform normal and routine maintenance as set out in this owner's manual. Deterioration or damage due to severe weather conditions such as hail, hurricanes, earthquakes or tornadoes, discoloration due to exposure to chemicals either directly or in the atmosphere, is not covered by this Limited Warranty.

There are no other express warranties except as set forth herein and any applicable implied warranties of merchantability and fitness are limited in duration to the period of coverage of this express written Limited Warranty. Some regions do not allow limitation on how long an implied warranty lasts, so this limitation may not apply to you.

Weber is not liable for any special, indirect or consequential damages. Some regions do not allow the exclusion or limitation of incidental or consequential damages, so this limitation or exclusion may not apply to you.

Weber does not authorize any person or company to assume for it any other obligation or liability in connection with the sale, installation, use, removal, return, or replacement of its equipment; and no such representations are binding on Weber.

This warranty applies only to products sold at retail. This warranty will be void if the cord to the Temperature Controller is not clamped to the unit.

WEBER-STEPHEN PRODUCTS LLC
Customer Service Center
90 West Hillcrest Boulevard, Suite 308
Schaumburg, IL 60195 USA

For replacement parts call:
1-800-446-1071

Visit www.weber.com®, select your country of origin, and register your grill today.

GENERAL INSTRUCTIONS

If you have questions or need advice regarding your grill or its safe operation contact the Customer Service Representative in your area. Use the contact information on our web site. Log onto www.weber.com®.

With the Weber® electric barbecue you can grill, barbecue, roast and bake with results that are difficult to duplicate with indoor kitchen appliances. The closed lid produces that "outdoor" flavour in the food. Electricity is easy to use and gives you more cooking control than charcoal fuel.

- These instructions will give you the minimum requirements for assembling your Weber® electric barbecue. Please read the instructions carefully before using your Weber® electric barbecue. Improper assembly can be dangerous.
- Not for use by children.
- This Weber® electric barbecue is not intended for commercial use.
- Do not leave the Weber® electric barbecue unattended when it is in use.
- Any parts sealed by the manufacturer must not be altered by the user.
- Any modification of the appliance may be dangerous.
- Visually inspect cord, plug and Temperature Controller for damage and wear before operation.
- When heating the grill for the first time, it may give off a slight burning odor. The grill is burning off excess lubricants found on the heating element. This does not affect the safety of your grill.
- To prevent fire or electric shock, always use a certified electrician should new circuits or outlets be required.

- Improperly grounded outlets could cause electrical shock.
- The use of an extension cord is not recommended. If you must use an extension cord, use the shortest length extension cord possible. Do not connect 2 or more extension cords together. Keep connections off the ground and dry. Do not let cord hang over edge of table top where it can be tripped over or pulled by children. Only use extension cord labeled for outdoor use.
- Cover grill or store in weather protected area when not in use.
- Clean the grate and cookbox between uses.

STORAGE AND/OR NON-USE

- During periods of non-use, the Temperature Controller with power cord should be in the "OFF" position. Store grill indoors.

OPERATING

- ⚠ **WARNING: Your Weber® electric barbecue must not be used upon any combustible surface such as dry grass, shrubs, etc.**
- ⚠ **WARNING: Your Weber® electric barbecue is not intended for installation in or on recreational vehicles, SUVs and/or boats.**

⚠ **WARNING: Do not use the barbecue within 60 cm (24 in) of combustible materials from the back or sides of the grill. Do not use under any combustible construction.**

⚠ **WARNING: The entire cooking box gets hot when in use. Do not leave unattended.**

⚠ **WARNING: Keep any electrical power cord away from any heated surface.**

⚠ **WARNING: Keep the cooking area clear of inflammable vapours and liquids such as petrol, kerosene, alcohol, etc., and other combustible materials.**

⚠ **WARNING: When cooking, the appliance must be on a level, stable surface in an area clear of combustible material.**

⚠ **WARNING: Keep cord clear of cookbox.**

BEFORE USING THE GRILL

CATCH PAN AND DISPOSABLE DRIP PAN

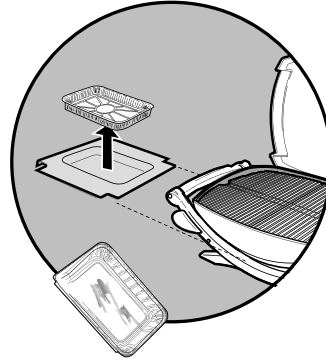
Your grill was built with a grease collection system. Check the catch pan and disposable drip pan for grease build-up each time you use your grill.

Remove excess grease with a plastic spatula; see illustration. When necessary, wash the catch pan and drip pan with a soap and water solution, then rinse with clean water. Replace the disposable drip pan as needed.

⚠ WARNING: Check the catch pan and disposable drip pan for grease build-up before each use. Remove excess grease to avoid a grease fire. A grease fire can cause serious bodily injury or damage to property.

⚠ CAUTION: Do not line the catch pan with aluminum foil.

(Q240) - Make sure that disposable drip pan (a) rests flat on catch pan (b). A bent drip pan may interfere with removal of catch pan.



COOKING

To preheat the grill: Turn on the Weber® electric barbecue according to the cooking Instructions in this owners' manual. Close the lid and turn the Temperature Controller to High. Preheat the grill for 15 minutes (Q140) or 20 minutes (Q240); longer preheating time will depend on conditions such as air temperature and wind.

Note: Wind and weather may require adjustment of the Temperature Control Knob to obtain the correct cooking temperature.

Drippings and grease: Excess drippings and grease will collect in the grease catch pan (located on the underside of the grill). Disposable Weber® drip pans are available that fit the grease catch pan.

⚠ WARNING: Check the grease catch pan and the removable bowl liner for grease build-up before each use. Remove excess grease to avoid a fire in the bottom of the grill.

⚠ WARNING: Do not move the Weber® electric grill when operating or while the grill is hot.

**This appliance is Rated for
120 volts - 50/60Hz,
Output: 1500W**

⚠ WARNING: Completely unwind power cord. Keep cord clear of cookbox.

1) Plug Temperature Controller into grill.

⚠ Always plug Temperature Controller fully into grill before plugging power cord into outlet.

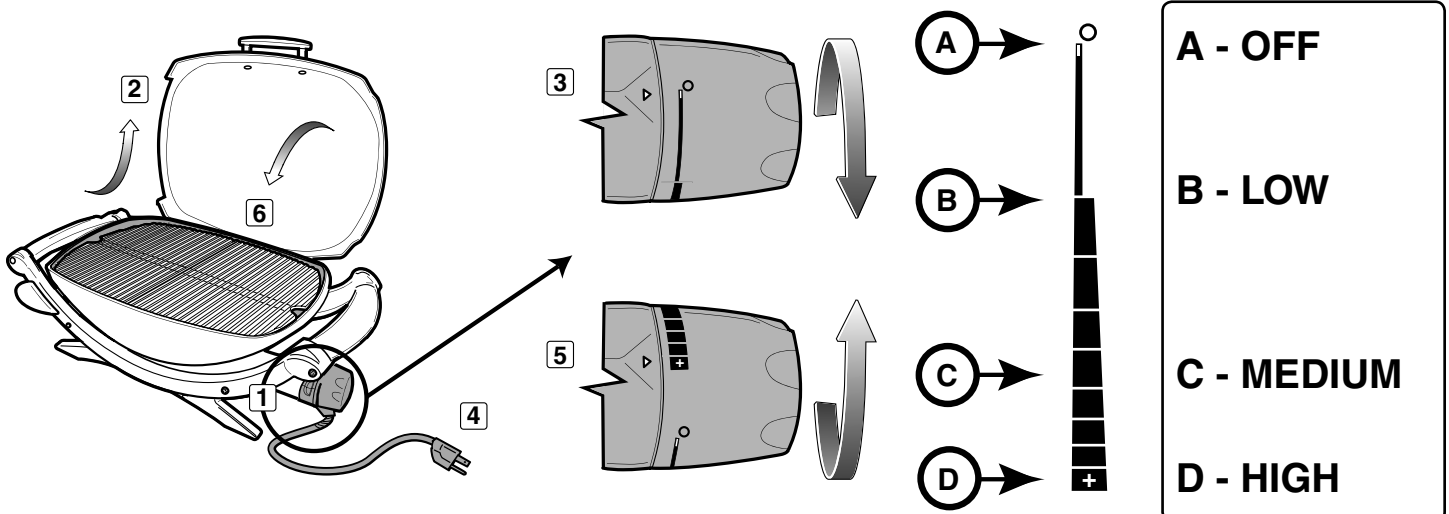
- 2) Open Lid.
- 3) Make sure the Temperature Controller is turned OFF. (Turn control knob counterclockwise to ensure that it is in the OFF position.)
- 4) Plug in power cord into a protected outlet.

⚠ The appliance should be supplied through a grounded GFI outlet, 15 amp minimum.

- 5) Preheat the grill. Turn control knob to HIGH (clockwise). The red light indicates that power is on and the heating element is heating up.
- 6) Close lid. Preheat time will take approximately 15 minutes (Q140) or 20 minutes (Q240), when grilling in a 72°F air temperature. Colder temperatures and/or wind can cause longer preheating times.

To cook at a lower grill temperature: Preheat as previously stated. Turn the control knob counterclockwise to desired setting. Start cooking. Reference the cooking charts at end of Owner's Guide for approximate grilling times and settings for the cuts of meats listed. (adjust for conditions).

⚠ WARNING: When red light is off, heating element may still be hot.



ERROR: rangecheck
OFFENDING COMMAND: .buildshading2

STACK:

-dictionary-
-dictionary-
-savelevel-