

Pioneer

XW-SMA1 XW-SMA3 XW-SMA4

Wireless Sound System

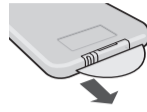
QUICK START GUIDE

What's in the box

- Please confirm that the following accessories are in the box when you open it.
- Remote Control
 - Lithium Battery (CR2025)*
 - Power Cord
 - AC Adapter
 - Quick Start Guide (this document)
 - Warranty Card
- * The lithium battery has been factory installed in the remote control unit.

Before using the remote control

- The battery supplied with this unit is stored in the battery casing.
- Remove the protective seal from the battery casing.
 - When you notice a decrease in the operating range, replace the battery.



Thank you for buying this Pioneer product. This manual covers basic operation of the device. For more details on product information or for online software manuals please refer to our company website. http://pioneer.jp/suppor/manual/wsa/sma1_3_4/

Discover the benefits of registering your product online at <http://www.pioneer.co.uk> (or <http://www.pioneer.eu>)

To register your product, find the nearest authorized service location, to purchase replacement parts, operating instructions, or accessories, please go to one of the following URLs:
 Pour enregistrer votre produit, trouver le service après-vente agréé le plus proche et pour acheter des pièces de rechange, des modes d'emploi ou des accessoires, reportez-vous aux URL suivantes :

In the USA/Aux Etats-Unis
<http://www.pioneer.com>
In Canada/Aux Canada
<http://www.pioneerelectronics.ca>

Declaration of Conformity with regard to the R&TTE Directive 1999/5/EC

MANUFACTURER: PIONEER CORPORATION 1-1, Shin-ogino, Sawawaku, Kawasaki-ki, Kanagawa 212-0031, Japan	EU Representative: Pioneer Europe NV Haven 1081, Keelberglaan 1, 9713 Slootde, Belgium http://www.pioneer.eu
--	--

[*] XW-SMA1, XW-SMA3, XW-SMA4

English:
 Hereby, Pioneer, declares that this [*] is in compliance with the essential requirements and other provisions of Directive 1999/5/EC.

Suomi:
 Tässä lausekkeella vakuutan että [*] täyttää vaatimukset asetuksessa 1999/5/EY säätämien vaatimusten ja muiden osittain relevanttien Voimassa olevien direktiivien mukaisesti.

Nederlands:
 Hierbij verklaart Pioneer dat het bestel [*] in overeenstemming is met de essentiële eisen en de andere relevante bepalingen van richtlijn 1999/5/EG.

Français:
 Par la présente Pioneer déclare que l'appareil [*] est conforme aux exigences essentielles et aux autres dispositions pertinentes de la directive 1999/5/CE.

Svenska:
 Härmed intygar Pioneer att denna [*] står i överensstämmelse med de väsentliga kraven på utrustning och de andra relevanta bestämmelser som framgår av direktiv 1999/5/EG.

Printed in China

ENGLISH

Indoor Use Only

IMPORTANT

The lightning flash with arrowhead symbol, within an equilateral triangle, is intended to alert the user to the presence of unshielded "dangerous voltage" within the product's enclosure that may be of sufficient magnitude to constitute a risk of electric shock to persons.

CAUTION

RISK OF ELECTRIC SHOCK DO NOT OPEN

CAUTION:
 TO PREVENT THE RISK OF ELECTRIC SHOCK, DO NOT REMOVE COVER (OR BACK). NO USER-SERVICEABLE PARTS INSIDE. REFER SERVICING TO QUALIFIED SERVICE PERSONNEL.



The exclamation point within an equilateral triangle is intended to alert the user to the presence of important operating and maintenance (servicing) instructions in the literature accompanying the appliance.

CAUTION
 The **standby/on** button on this unit will not completely shut off all power from the AC outlet. Since the power cord serves as the main disconnect device for the unit, you will need to unplug it from the AC outlet to shut down all power. Therefore, make sure the unit has been installed so that the power cord can be easily unplugged from the AC outlet in case of an accident. To avoid fire hazard, the power cord should also be unplugged from the AC outlet when left unused for a long period of time (for example, when on vacation).

If the AC plug of this unit does not match the AC outlet you want to use, the plug must be removed and appropriately fitted. Replacement and mounting of an AC plug on the power supply cord of this unit should be performed only by qualified service personnel. If connected to an AC outlet, the cut-off plug can cause severe electrical shock. Make sure it is properly disposed of after removal. The equipment should be disconnected by removing the mains plug from the wall socket when left unused for a long period of time (for example, when on vacation).

WARNING
 To prevent a fire hazard, do not place any naked flame sources (such as a litged candle) on the equipment.

WARNING
 Before plugging in for the first time, read the following section carefully.
 The voltage of the available power supply differs according to country or region. Be sure that the power supply voltage of the area where this unit will be used meets the required voltage (e.g., 230 V or 120 V) written on the AC adapter label.

VENTILATION CAUTION
 When installing this unit, make sure to leave space around the unit for ventilation to improve heat radiation (at least 10 cm on top, 10 cm on rear, and 10 cm on each side).

WARNING
 Slots and openings in the cabinet are provided for ventilation to ensure reliable operation of the product, and to protect it from overheating. To prevent fire hazard, the openings should never be blocked or covered with items (such as newspapers, tablecloths, curtains) or by operating the equipment with thick carpet or a bed.



AC adapter CAUTION

Make sure you grasp the body of the AC adapter when removing it from the power outlet. If you pull the power cord, it may become damaged which could lead to fire and/or electrocution.

Do not attempt to plug in or remove the AC adapter with wet hands. This may result in electrocution.

Do not insert the power cord of AC adapter into a power outlet where the connection remains loose despite inserting the prongs all the way into the outlet. Heat may be generated which could lead to fire. Consult with the retailer or an electrician regarding replacement of the power outlet.

This transmitter must not be co-located or operated in conjunction with any other antenna or transmitter.

This device complies with Industry Canada licence-exempt RSS standards. Operation is subject to the following two conditions: (1) this device must not cause interference, and (2) this device must accept any interference, including interference that may cause undesired operation of the device.

WARNING
 This equipment is not waterproof. To prevent a fire or shock hazard, do not place any container filled with liquid near this equipment (such as a vase or flower pot) or expose it to dripping, splashing, rain or moisture.

Radio wave caution
 This unit uses a 2.4 GHz radio wave frequency, which is a band used by other wireless systems (Microwave ovens and Cordless phones, etc.). In this event, noise appears in your television image, there is the possibility this unit (including products supported by this unit) is causing signal interference with the antenna input connector of your television, video, satellite tuner, etc. In this event, increase the distance between the antenna input connector and this unit (including products supported by this unit) until the interference disappears.

Power-cord caution
 Handle the power cord by the plug. Do not pull out the plug by tugging the cord and never touch the power cord when your hands are wet as this could cause a short circuit or electric shock. Do not insert a piece of furniture, etc., on the power cord, or pinch the cord. Never make a knot in the cord or lie it with other cords. The power cords should be routed such that they are not likely to be stepped on. A damaged power cord can cause a fire or give you an electrical shock. Check the power cord once in a while to make sure you find it damaged, ask your nearest PIONEER authorized service center or your dealer for a replacement.

Radio wave caution
 This unit uses a 2.4 GHz radio wave frequency, which is a band used by other wireless systems (Microwave ovens and Cordless phones, etc.). In this event, noise appears in your television image, there is the possibility this unit (including products supported by this unit) is causing signal interference with the antenna input connector of your television, video, satellite tuner, etc. In this event, increase the distance between the antenna input connector and this unit (including products supported by this unit) until the interference disappears.

WARNING
 Store small parts out of the reach of children and infants. If accidentally swallowed, contact a doctor immediately.

[For American Users]

IMPORTANT NOTICE
 THE MODEL NUMBER AND SERIAL NUMBER OF THIS EQUIPMENT ARE ON THE REAR OR BOTTOM. RECORD THESE NUMBERS ON YOUR ENCLOSED WARRANTY CARD AND KEEP IN A SAFE PLACE FOR FUTURE REFERENCE.

NOTE:
 This equipment has been tested and found to comply with the limits for a Class B digital device, pursuant to Part 15 of the FCC Rules. These limits are designed to provide reasonable protection against harmful interference in a residential installation. This equipment generates, uses, and can radiate radio frequency energy and, if not installed and used in accordance with the instructions, may cause harmful interference to radio communications. However, there is no guarantee that interference will not occur in a particular installation. If this equipment does cause harmful interference to radio or television reception, which can be determined by turning the equipment off and on, the user is encouraged to try to correct the interference by one or more of the following measures:
 — Reorient or relocate the receiving antenna.
 — Increase the separation between the equipment and receiver.
 — Connect the equipment into an outlet on a circuit different from that to which the receiver is connected.
 — Consult the dealer or an experienced radio/TV technician for help.

FEDERAL COMMUNICATIONS COMMISSION DECLARATION OF CONFORMITY
 This device complies with part 15 of the FCC Rules. Operation is subject to the following two conditions: (1) This device may not cause harmful interference, and (2) this device must accept any interference received, including interference that may cause undesired operation.

Product Name: Wireless Sound System
 Model Number: XW-SMA1-K, XW-SMA3-K, XW-SMA4-K
 Responsible Party Name: PIONEER ELECTRONICS (USA) INC., SERVICE SUPPORT DIVISION
 Address: 1925 E. DOMINGUEZ ST. LONG BEACH, CA 90810-1030, U.S.A.
 Phone: 1-800-421-4848
 URL: <http://www.pioneerelectronics.com>

The Safety of Your Ears is in Your Hands
 Get the most out of your equipment by playing it at a safe level – a level that lets the sound come through clearly without annoying blaring or distortion and, most importantly, without affecting your sensitive hearing. Sound can be deceiving. Over time, your hearing "comfort level" adapts to higher volumes of sound, so what sounds "normal" can actually be loud and harmful to your hearing. Guard against this by setting your equipment at a safe level BEFORE your hearing adapts.

ESTABLISH A SAFE LEVEL:
 • Set your volume control at a low setting.
 • Slowly increase the sound until you can hear it comfortably and clearly, without distortion.
 • Once you have established a comfortable sound level, set the dial and leave it there.

BE SURE TO OBSERVE THE FOLLOWING GUIDELINES:
 • Do not form up the volume so high that you can't hear what's around you.
 • Use caution or temporarily discontinue use in potentially hazardous situations.
 • Do not use headphones while operating a motorized vehicle; the use of headphones may create a traffic hazard and is illegal in many areas.

FCC Radiation Exposure Statement:
 This equipment complies with FCC radiation exposure limits set forth for an uncontrolled environment. This equipment should be installed and operated with a minimum distance of 20 cm between the radiator and your body.

[For American Users]

Information to User
 Alterations or modifications carried out without appropriate authorization may invalidate the user's right to operate the equipment.

WARNING: Handling the cord on this product or cords associated with accessories sold with the product may expose you to chemicals listed on proposition 65 known to the State of California and other governmental entities to cause cancer and birth defect or other reproductive harm.
Wash hands after handling.

[For European Users]

Information for users on collection and disposal of old equipment and used batteries

These symbols on the products, packaging, and/or accompanying documents mean that used electrical and electronic products and batteries should not be mixed with general household waste.

For proper treatment, recovery and recycling of old products and used batteries, please take them to applicable collection points in accordance with your national legislation.

By disposing of these products and batteries correctly, you will help to save valuable resources and prevent any potential negative effects on human health and the environment which could otherwise arise from inappropriate waste handling.

For more information about collection and recycling of old products and batteries, please contact your local municipality, your waste disposal service or the point of sale where you purchased the items.

These symbols are only valid in the European Union.
 For countries outside the European Union, you will need to discard these items, please contact your local authorities or dealer and ask for the correct method of disposal.

[For Canadian Users]

This Class B digital apparatus complies with Canadian ICES-003.

IC Radiation Exposure Statement:
 This equipment complies with IC RSS-102 radiation exposure limits set forth for an uncontrolled environment. This equipment should be installed and operated with a minimum distance of 20 cm between the radiator and your body.

[For American Users and Canadian Users]

Operating Environment
 Operating environment temperature and humidity:
 +5 °C to +25 °C (+41 °F to +77 °F); less than 85 %RH (cooling vents not blocked)
 Do not install this unit in a poorly ventilated area, or in locations exposed to high humidity or direct sunlight (or strong artificial light).

[Except American Users and Canadian Users]

Operating Environment
 Operating environment temperature and humidity:
 +5 °C to +35 °C (+41 °F to +95 °F); less than 85 %RH (cooling vents not blocked)
 Do not install this unit in a poorly ventilated area, or in locations exposed to high humidity or direct sunlight (or strong artificial light).

Installing the unit

- When installing this unit, make sure to put it on a level and stable surface.

Don't install it on the following places:

- on a color TV (the screen may distort)
- near a cassette deck (or close to a device that gives off a magnetic field). This may interfere with the sound.
- in direct sunlight
- in extremely hot or cold areas
- in places where there is vibration or other movement
- in places that are very dusty
- in places that have hot fumes or oils (such as near a kitchen stove)

CAUTION

- When in use, do not stand the device up, prop it up against anything or hang it from anything.
- Do not sit or stand on top of the device.
- When carrying the device, hold the entire device firmly. Do not swing the device around by the frame.

Use in a wet environment (XW-SMA1 and XW-SMA4 only)

CAUTION
 • XW-SMA1 and XW-SMA4 are not drip-proof. When using, prevent exposure to water. Do not use in the following environments.
 • Humid places
 • Places where the product is easily exposed to water.
 • Near the beach or on the beach.
 This could cause rust.

Internal Rechargeable Lithium-ion Battery (XW-SMA3 only)

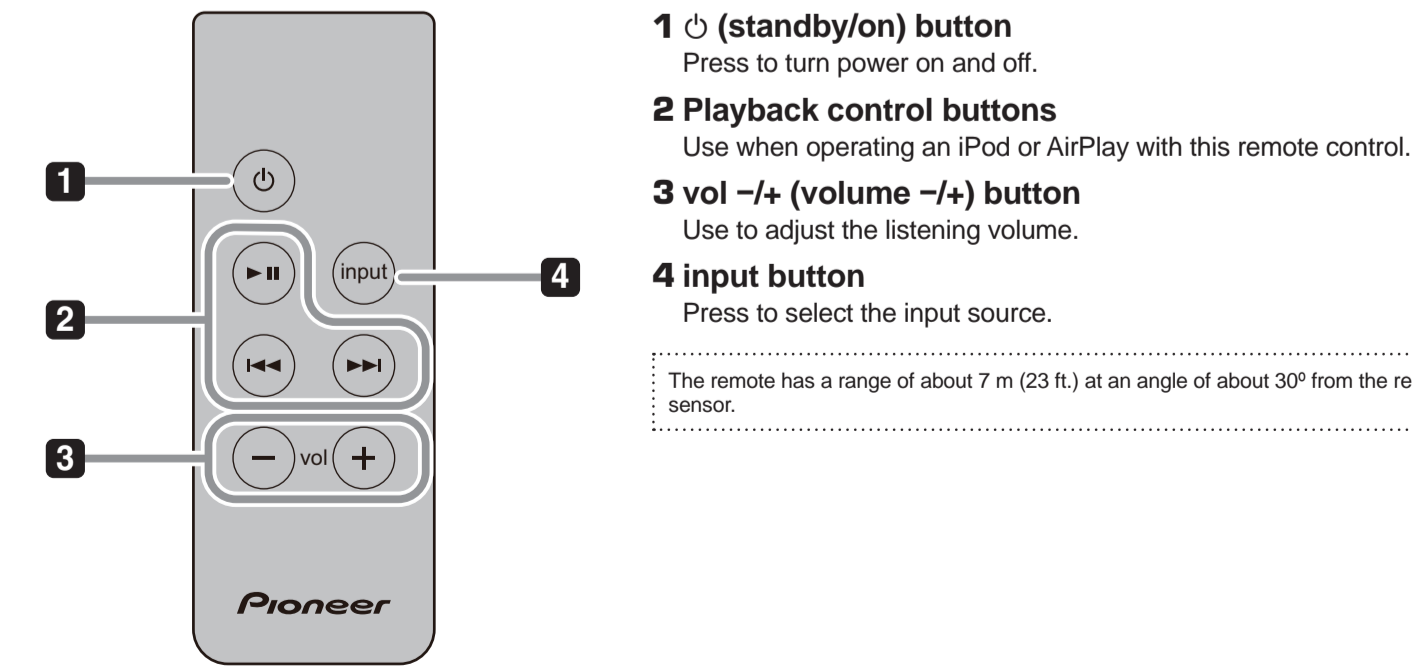
This device uses an internal rechargeable lithium-ion battery that should last the lifetime of the device. If you suspect your battery may be dead, try charging it several times. If the battery does not recharge, please contact us for repair information.

WARNING/DISPOSAL OF UNIT [For American Users, Canadian Users]

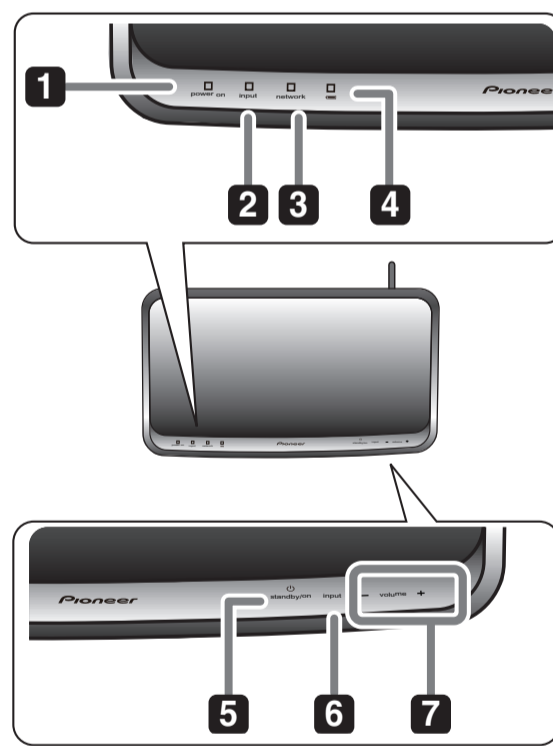
Please do NOT attempt to change the battery yourself. If the battery has died and you do not want us to replace your battery, you should follow the disposal instructions below:

- Never dispose of used batteries/electronics with ordinary solid wastes, since they contain toxic substances.
- Always dispose of used batteries/electronics in accordance with the prevailing community regulations that apply to the disposal of batteries/electronics. If there are no local regulations concerning battery/electronics disposal, please dispose of the device in a waste bin for electronic devices.
- Many electronics retailers now recycle batteries and other electronic components at no charge. Check to see which ones in your area do so.

Remote control



Front panel



1 power on indicator

When the power is on, this indicator lights.

2 input indicator

When the input source changes, this indicator lights. The indicator's color changes as noted below.

Light OFF - AUX IN
Lights blue - AirPlay **Lights red - iPod**
Lights green - DLNA (DMR) Digital Media Renderer

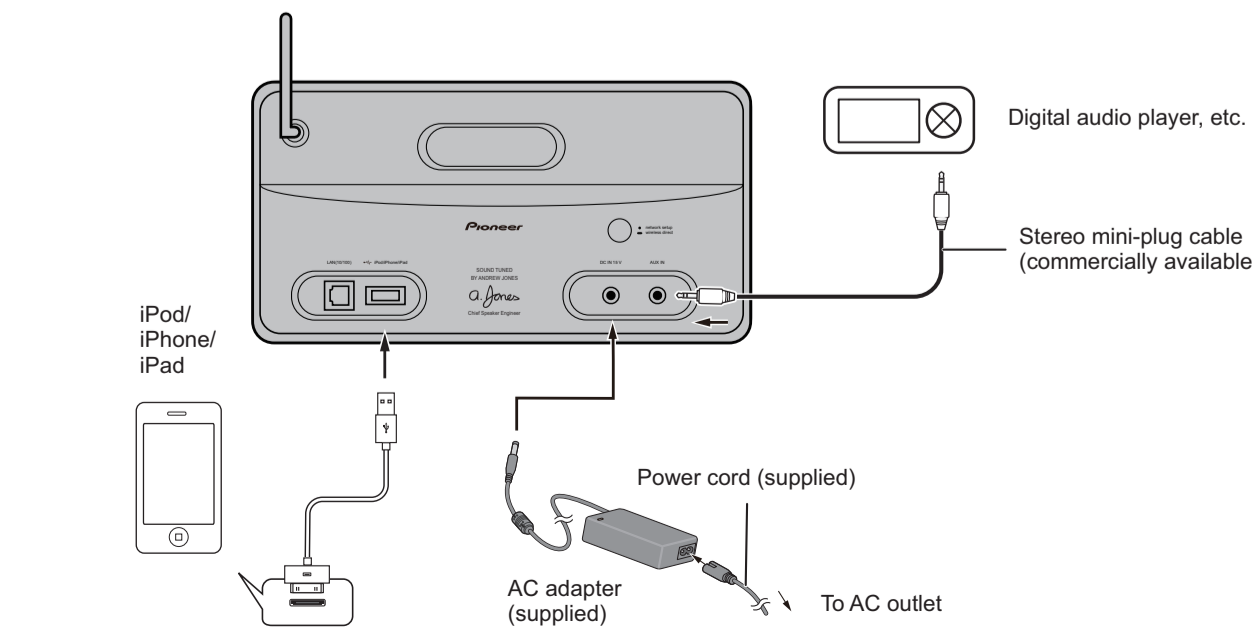
3 network indicator

When the network status changes, this indicator lights.

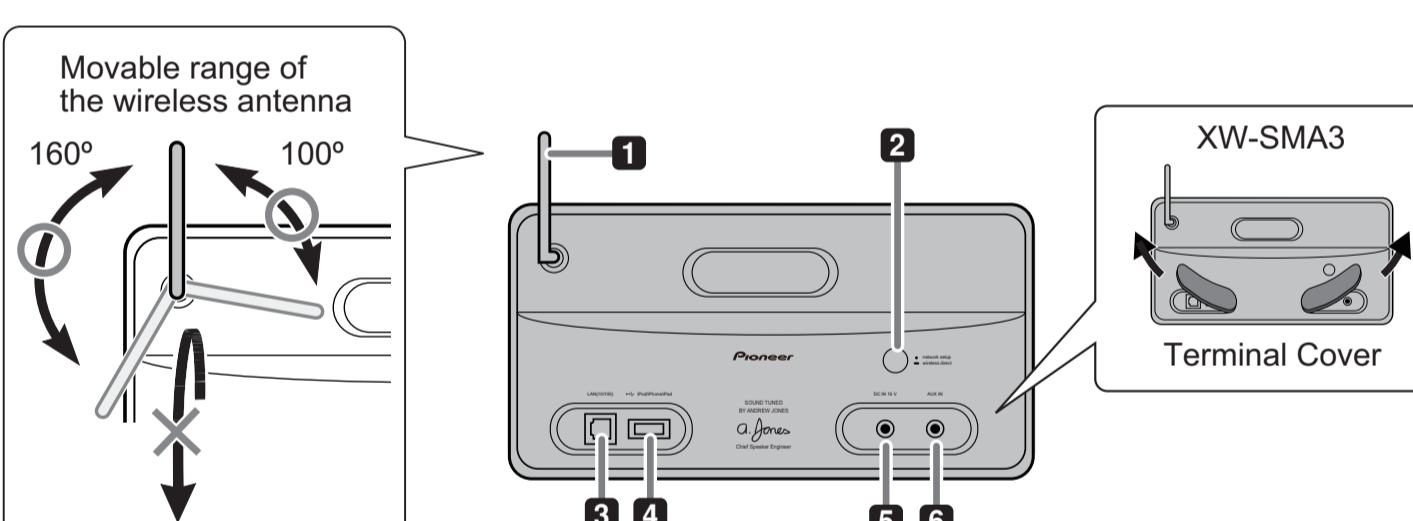
Lights blue - good connection
Flashes blue - weak signal
Flashes red - connection failure

Connections

Open the terminal cover (XW-SMA3 only). Before making or changing the connections, switch off the power and disconnect the power cord from the AC outlet.



Rear panel



1 Wireless antenna

Receives signals from wireless devices.

2 network setup/wireless direct button

Use to set the wireless network (See "Connect to network" on the reverse side of this sheet).

3 LAN (10/100) connector

Connect this unit to other network devices using a LAN cable.

4 iPod/iPhone/iPad connector

Use to connect iPod/iPhone/iPad as an audio source. This unit does not support the USB mass storage device.

5 DC IN terminal

Connect to AC adapter.

6 AUX IN jack

Use to connect an auxiliary playback device.

Firmware Update using Safari browser

You can update this unit's firmware via Safari browser. Download the latest firmware at Pioneer website.

- Connect the AC adapter when using the XW-SMA3 (this operation cannot be performed using battery power).
- When updating the firmware, it is necessary to connect the unit to a network by following the procedure (except method F) listed on the reverse side of this sheet.

1 Be sure this unit and your computer are connected to the same wired or wireless network.

2 Launch Safari on your computer.

3 Press Bookmark icon. Click Bonjour list (a), and then select this unit's name ("Friendly Name") (b) in Bookmark.

4 Click Firmware Update.

5 Press Start.

6 Browse the latest firmware on your computer (a) and then press Upload (b).

The confirmation screen is displayed. If you continue the firmware update, press **Yes**. Once the firmware update process starts, you can't stop it.

7 The firmware update status screen is displayed.

When the update is completed, unplug the power cord from its AC outlet as instructed in the display.

Important
 • Never disconnect the AC power while updating is underway.

Before Use (Important)

Safety Precautions

DANGER

About the Device
 Please follow the instructions noted. Failure to do so may cause the built-in lithium-ion battery to leak, overheat, ignite, or rupture.

- Do not dispose of the device in fire or expose it to heat.
- Do not attempt to disassemble the battery or alter it in any way.
- Do not throw the device, strike it with a hammer or other object, or drive nails into it.
- Do not use or leave the device in places where it will be exposed to high temperatures, such as near a stove or inside a closed automobile.
- In the event that the built-in lithium-ion battery leaks fluid and the fluid contacts your eyes, do not rub them, but rinse with copious amounts of clean water and seek immediate medical treatment. Your eyes may be seriously harmed by exposure to such battery fluid.
- Do not allow the battery to be immersed in fresh or sea water, or become otherwise wet.
- Do not recharge the battery near a fire or in direct sunlight.
- Do not recharge the battery using any method other than as instructed.

The battery used in this device may present a risk of fire, explosion or chemical burn if misreated.
 • Never disassemble the unit or attempt to remove battery as that could cause leakage of alkaline solution or other electrolytic substance.
 • Never use the device in an unventilated vehicle where excessive internal temperatures may be encountered.
 • Always keep the device out of the reach of infants and small children.

WARNING

About the Device
 • Do not use the device if it emits an unusual odor, heats up, changes color or shape, or if any other abnormalities occur during use, while recharging or while placed in storage.

- If the battery does not recharge completely, even after exceeding the specified time, stop recharging. Failure to do so could cause the device to heat up, rupture, or ignite.
- Recharge the battery in an environment with a temperature between 5 °C (41 °F) and 35 °C (95 °F). Recharging the battery under different temperatures could cause the device to heat up, rupture, or ignite, and may also deteriorate the performance and the life of the built-in lithium-ion battery.
- Do not place the device in a microwave oven or expose it to high pressure, since the device may overheat, rupture, or ignite.
- Do not place a leaking rechargeable lithium-ion battery near a source of heat or fire, since the battery could overheat, rupture, or ignite.

CAUTION

About the Device
 • Do not dispose of the device in fire or water, since the rechargeable lithium-ion battery could rupture or leak battery fluid, resulting in fire or personal injury.
 • If fluid leaking from a rechargeable lithium-ion battery contacts your skin or clothes, wash immediately with copious amounts of clean water. If left unattended, a skin rash could result.

About water-resistant (XW-SMA3 only)

CAUTION

Observe the following precautions in regard to the device's water-resistant.

- Do not place the unit in water.
- Do not expose the unit to a large amount of water.
- Do not splash the unit with water.
- Do not expose to rain for long periods of time.
- Do not pour or place in warm water or water containing soap or detergent.
- Do not use in a humid environment such as a bathroom.
- Do not use near or on the beach.
- This could cause rust. If exposed to seawater, thoroughly wipe off the moisture immediately with a dry cloth.
- Ensure that the terminal cover is closed during use.

The rubber packing on the cover make the device water-resistant. Make sure this packing does not get soiled or damaged.

If the rubber packing does become soiled, wipe it clean with a dry, clean cloth.

Do not open the terminal cover in humid environments in which the device could get exposed to water.

If the device is exposed to a large amount of water or moisture, immediately wipe it down with a dry cloth.

Only open or close the terminal cover after having completely wiped off any moisture around them, with dry hands and in an environment where the unit would not get exposed to water again.

Make sure to install the unit on a flat and stable surface. Do not use the unit upside down or in a tilted position.

Since water may reach the interior of the unit, install the unit in a proper position.

Do not turn the unit upside down or hold it tilted when it has been exposed to water or water droplets.

Since the water might run into the interior parts of the unit, do not tilt the unit if it is wet.

If the device does get exposed to water, thoroughly dry all of the crevices on the unit's body into which water might have reached.

Make sure to install the unit on a flat and stable surface. Do not use the unit if it is still wet.

Do not use the remote control or AC adapter when in proximity to water.

Only the device itself is water-resistant.

This unit has been designed with water-resistance equivalent to standards IPX2(*) as defined by the International Electrotechnical Commission (IEC).

Malfunctions due to water damage caused by improper use are not covered by product warranty, even if they occur within the warranty period.

Depending on conditions of use, the water-resistant features are not necessarily guaranteed even during the warranty period.
 * IPX2: The unit must be protected from water drops that fall vertically onto it when the unit is at an angle of 15 degrees or less.

FAQ

Problem	Check	Remedy
Can't operate the iPod/iPhone/iPad.		Make sure the iPod/iPhone/iPad is connected correctly. Also, try disconnecting the iPod/iPhone/iPad then reconnecting it. If the iPod/iPhone/iPad has frozen, try resetting the iPod/iPhone/iPad,

Connect to network

By connecting the unit to your home LAN, you can enjoy AirPlay and playback of music stored on your computer or other device.

- This unit cannot be used to play movie files.
- For information regarding the format of files supported by this unit, consult the Operating Instructions posted on the Pioneer website.
- Methods of connection may vary depending on the device used. Confirm the type of unit, and follow the appropriate instructions.

* If you select method A, C or E, confirm the LAN cable is not connected to this unit.

Connecting this unit using wireless LAN

Connecting to a router with WPS-PBC function (use this method under normal conditions)

Yes WPS-PBC 

→ A

Connecting to a router without WPS-PBC function

Connect this unit directly to your computer or tablet PC. Settings must be performed from the Web browser of the computer or tablet PC.

→

If your computer or tablet PC is equipped with wireless LAN function

Yes 

→ C

If your computer or tablet PC is not equipped with wireless LAN function (wired LAN only)

No 

→ D

If you intend to connect an iPhone/iPod touch/iPad (with iOS ver 5.0 or later) to a conventional household wireless LAN

The same wireless LAN connection settings can be applied to this unit.

Yes 

→ E

Connecting this unit using wired LAN

Connecting to a router with DHCP server function (this method should be used under normal conditions)

Yes DHCP 

→ B

When fixed IP must be set (connecting to a router without DHCP server function)

Your computer or tablet PC must be connected directly to the unit, and settings must be performed from a Web browser.

→

If your computer or tablet PC is equipped with wireless LAN function

Yes 

→ C

If your computer or tablet PC is not equipped with wireless LAN function (wired LAN only)

No 

→ D

Wireless Direct Function

The Wireless Direct function allows the use of a direct wireless connection between this unit and a wireless LAN device, without the need for a router.

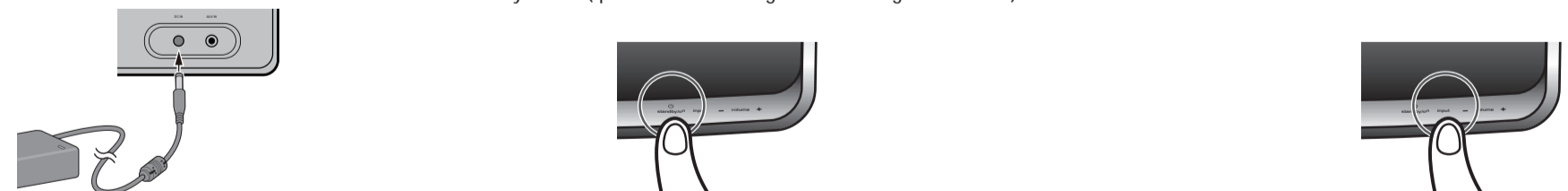


→ F

Turning on Quick Start Mode

Quick Start Mode significantly reduces the time required for startup. It also allows the unit to power on automatically using AirPlay and DLNA. Follow the steps below to turn on Quick Start Mode.

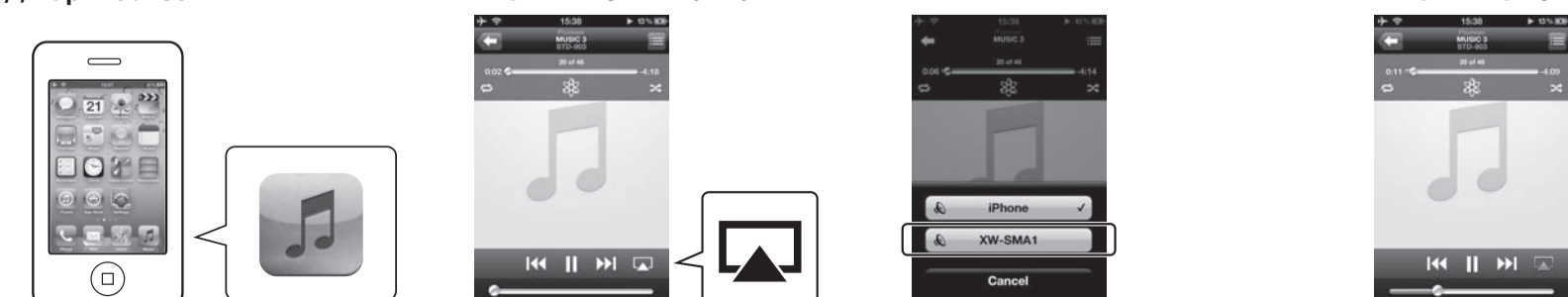
- Connect the AC adapter.
- Press the **standby/on** button. After the power turns on, it takes approximately 30 seconds for the unit to be ready to use (*power on LED will go from flashing to solid blue).
- Press the **input** button for 3 seconds. The LEDs will flash blue 4 times to signal Quick Start Mode has been turned on.



When connection is complete, read the following instructions.

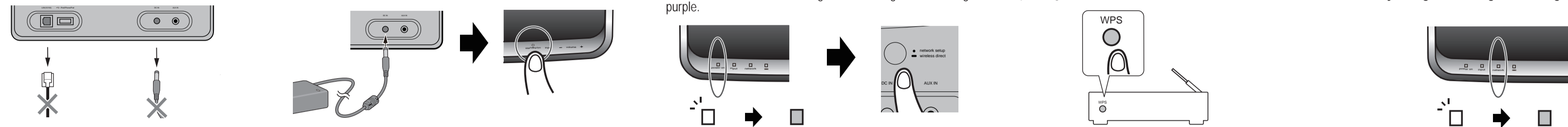
Enjoying AirPlay

- Tap **iPod** icon.
- Tap **AirPlay** icon ().
- Select **SMA**.
- Tap **▶** to play music.



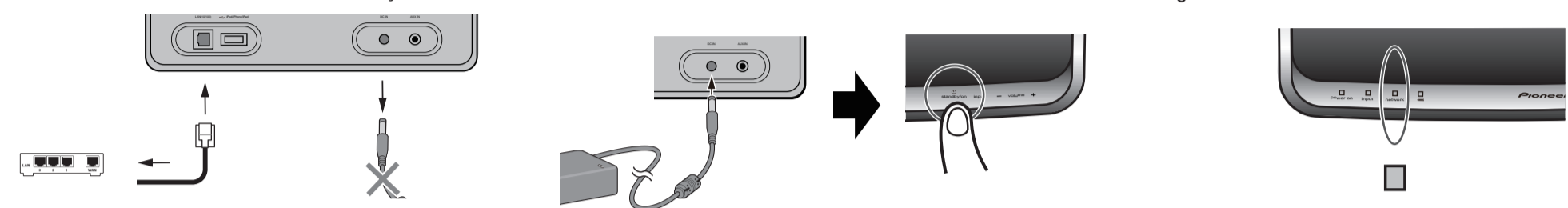
A Connections for wireless LAN using WPS-PBC function

- Confirm that the AC adapter and LAN cable are not connected to the unit.
- Connect the AC adapter, and press **standby/on** button. The power on indicator will flash blue. Wait for about 30 to 40 seconds.
- When the power on indicator stops flashing, press the rear-panel network setup/wireless direct button. The network indicator will change from flashing red to flashing purple.
- Within 2 minutes, press the router's WPS button. For information regarding router operation, consult the router's Operating Instructions.
- The network connection settings will be performed automatically, and when the connection is complete, the unit's indicator will briefly change to flashing red, then light steadily blue.



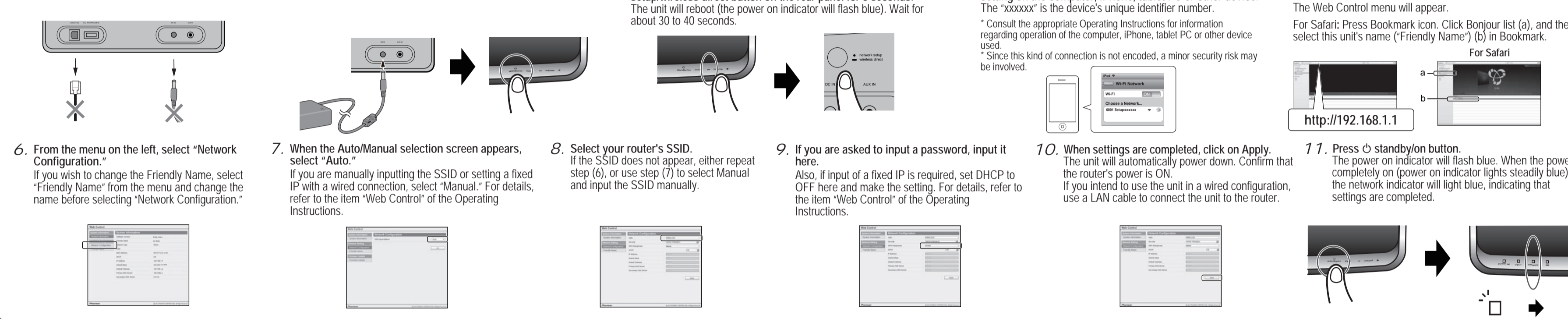
B Wired connection to a router with DHCP server

- Disconnect the AC adapter before performing the connection between router and this unit. Use a LAN cable to connect this unit and your router.
- Connect the AC adapter, and press **standby/on** button. The power on indicator will flash blue. Wait for about 30 to 40 seconds.
- The power on indicator's flashing will stop, and when the power is fully turned on, the network indicator will light blue.



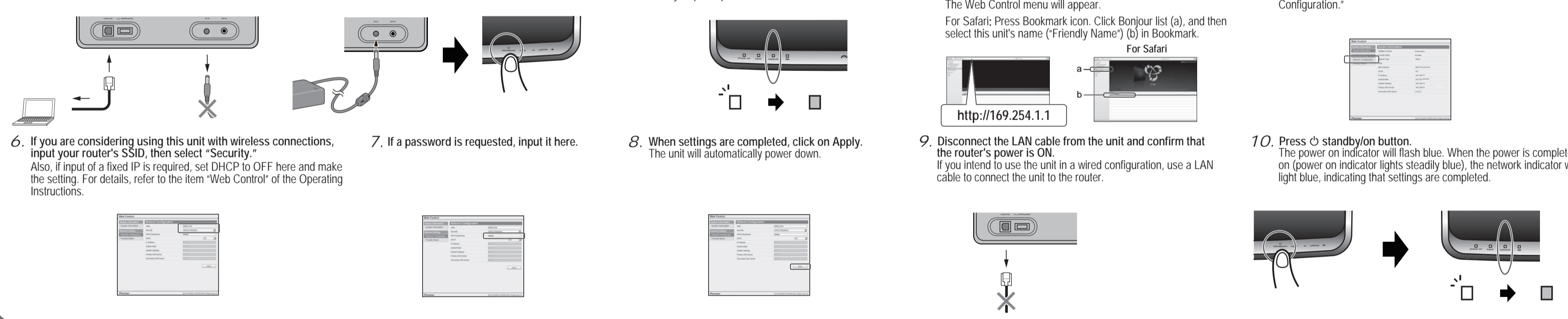
C Connection settings from a Web browser using a computer, iPhone, tablet PC or other device supporting wireless LAN

- Confirm that the AC adapter and LAN cable are not connected to the unit.
- Connect the AC adapter, and press **standby/on** button. The power on indicator will flash blue. Wait for about 30 to 40 seconds.
- When the power on indicator stops flashing, press and hold volume - button on the front panel, and then press and hold network setup/wireless direct button on the rear panel for 3 seconds. The unit will reboot (the power on indicator will flash blue). Wait for about 30 to 40 seconds.
- When the network indicator lights red, connect to the network called "Pioneer Setup:xxxxxx" from Wi-Fi network setting on the computer, iPhone, tablet PC or other device. The "xxxxxx" is the device's unique identifier number. * Consult the appropriate Operating Instructions for information regarding operation of the computer, iPhone, tablet PC or other device used. * Since this kind of connection is not encoded, a minor security risk may be involved.
- When the connection is established, boot your Web browser and access the URL noted below to make settings for this unit. The Web Control menu will appear. For Safari: Press Bookmark icon. Click Bonjour list (a), and then select this unit's name ("Friendly Name") (b) in Bookmark.



D Using a Web browser on a computer supporting wired LAN to make connecting settings for the unit

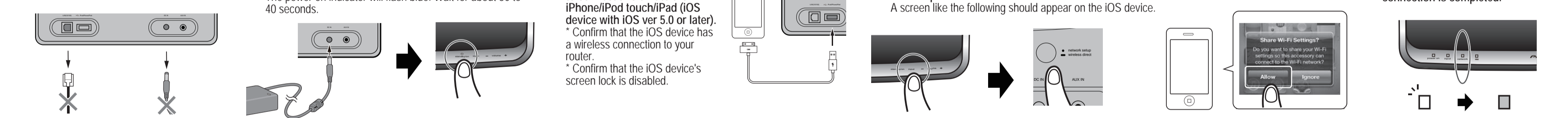
- Use a LAN cable to connect the unit to the computer.
- Connect the AC adapter, and press **standby/on** button. The power on indicator will flash blue. Wait for about 30 to 40 seconds.
- Wait for the network indicator to change from flashing to steadily lighted red. This may require up to 90 seconds or so.
- When the network indicator lights red, start your computer's Web browser, and access the URL noted below to make settings for this unit. The Web Control menu will appear. For Safari: Press Bookmark icon. Click Bonjour list (a), and then select this unit's name ("Friendly Name") (b) in Bookmark.
- From the menu on the left, select "Network Configuration." If you wish to change the Friendly Name, select "Friendly Name" from the menu and change the name before selecting "Network Configuration."



E Connection settings using an iOS device

If you use an iPhone/iPod touch/iPad (iOS device with iOS ver 5.0 or later) with wireless LAN connection, apply the iOS device's connecting settings to this unit.

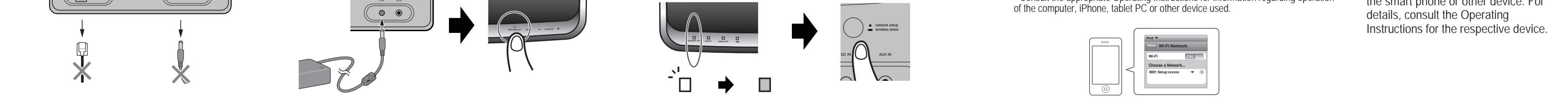
- Confirm that the AC adapter and LAN cable are not connected to the unit.
- Connect the AC adapter, and press **standby/on** button. The power on indicator will flash blue. Wait for about 30 to 40 seconds.
- When the power on indicator stops flashing, use a USB cable to connect this unit to the iPhone/iPod touch/iPad (iOS device with iOS ver 5.0 or later). * Confirm that the iOS device has a wireless connection to your router. * Confirm that the iOS device's screen lock is disabled.
- Press and hold input button on the front panel, and then press and hold network setup/wireless direct button on the rear panel for 3 seconds. A screen like the following should appear on the iOS device.
- Tap the "Allow" button.
- When the network indicator changes from flashing red to steadily lighted blue, the connection is completed.



F Wireless Direct Function

This connection allows the temporary use of this unit in places where a router is not available: when power is turned off, the Wireless Direct function is disabled and the network setting of this unit returns to the previous setting. Since this kind of connection is not encoded, a minor security risk may be involved. For details, see the Operating Instructions.

- Confirm that the AC adapter and LAN cable are not connected to the unit.
- Connect the AC adapter, and press **standby/on** button. The power on indicator will flash blue. Wait for about 30 to 40 seconds.
- Confirm that the unit's power on indicator stops flashing. Hold the unit's rear-panel network setup/wireless direct button depressed for 3 seconds. The unit will begin rebooting (the power on indicator will flash blue); wait for about 30 to 40 seconds.
- When the network indicator lights purple, connect to the network called "Wireless Direct:xxxxxx" from Wi-Fi network setting on the computer, iPhone, tablet PC or other device. The "xxxxxx" is the device's unique identifier number. * Consult the appropriate Operating Instructions for information regarding operation of the computer, iPhone, tablet PC or other device used.



Note that the network indicator will continue to light purple even after this connection is established. Thereafter, you can listen to music using the smart phone or other device. For details, consult the Operating Instructions for the respective device.

PIONEER CORPORATION
1-1, Shin-ogura, Saiwai-ku, Kawasaki-shi, Kanagawa 212-0031, Japan
Корпорация Пайонир
1-1, Син-Огура, Сайвай-ку, г. Kawasaki, префектура Канагава, 212-0031, Япония
Импортер: ООО "ПИОНЕР РУС"
125040, Россия, г. Москва, ул. Правды, д.26 Тел.: +7(495) 956-89-01

PIONEER ELECTRONICS (USA) INC.
P.O. BOX 1540, Long Beach, California 90801-1540, U.S.A. TEL: (800) 421-1404
PIONEER ELECTRONICS OF CANADA, INC.
340 Ferrier Street, Unit 2, Markham, Ontario L3R 2Z5, Canada TEL: 1-877-283-5901, 905-479-4411
PIONEER EUROPE NV
Haven 1087, Keetberglaan 1, B-9120 Melsele, Belgium TEL: 03/570.05.11

PIONEER ELECTRONICS ASIACENTRE PTE. LTD.
253 Alexandra Road, #04-01, Singapore 159936 TEL: 65-6472-7555
PIONEER ELECTRONICS AUSTRALIA PTY. LTD.
5 Arco Lane, Heatherton, Victoria, 3202, Australia. TEL: (03) 9586-6300
PIONEER ELECTRONICS DE MEXICO S.A. DE C.V.
Blvd.Manuel Avila Camacho 138 10 piso Col.Lomas de Chapultepec, Mexico, D.F. 11000 TEL: 55-9178-4270
K002_B4_Ru