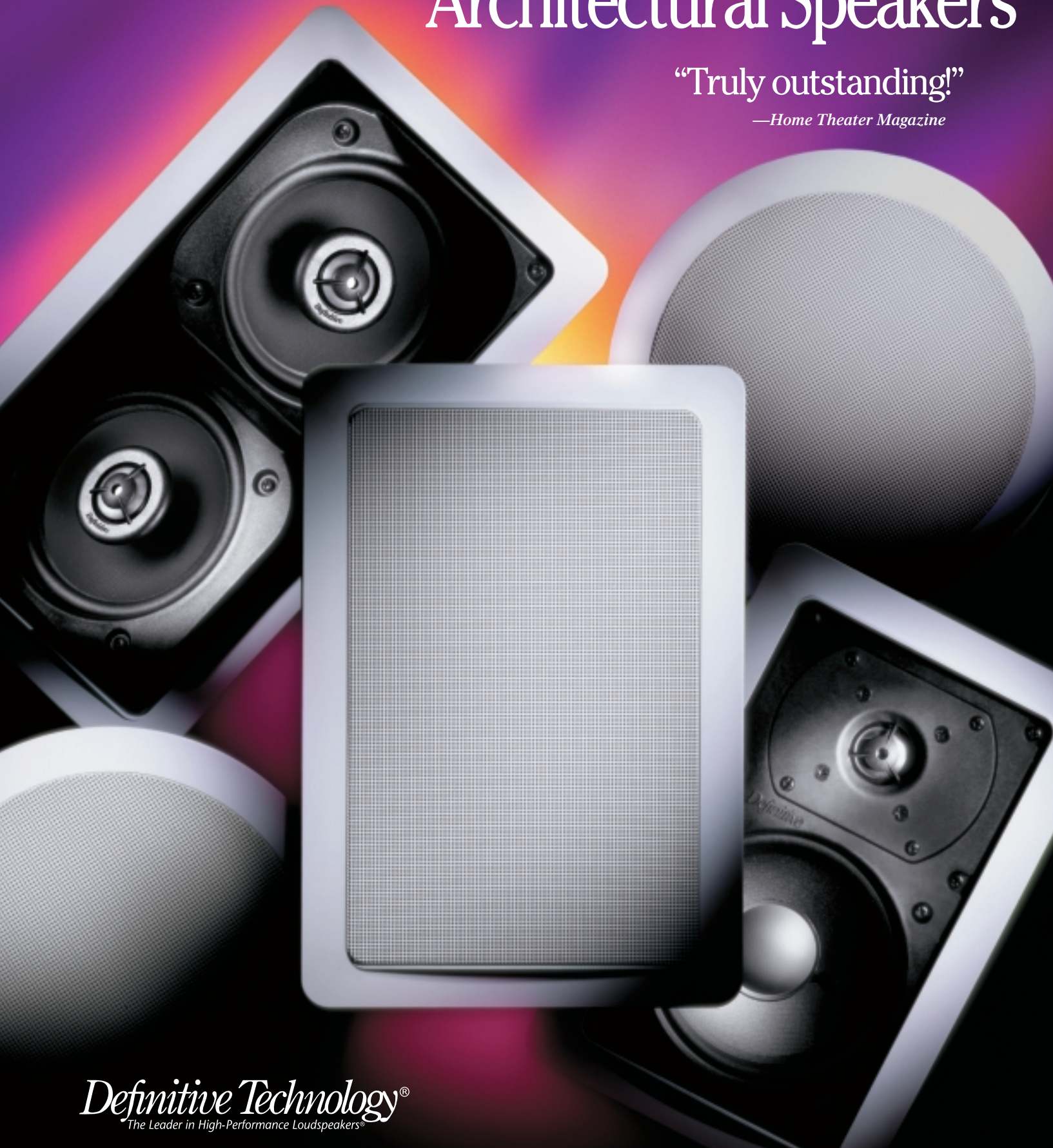


# Definitive Technology's Ultimate Performance Architectural Speakers

"Truly outstanding!"

—*Home Theater Magazine*



*Definitive Technology*<sup>®</sup>  
The Leader in High-Performance Loudspeakers<sup>®</sup>

# Definitive's Grand Prix Award-W

# D

*efinitive Technology's total commitment to uncompromised sonic superiority has made us the leader in high performance loudspeakers. We are pleased to introduce our architectural loudspeakers. This extensive line of reference-quality loudspeakers offers the highest level of sonic performance and construction quality. They are designed for easy in-wall/in-ceiling installation in homes as well as commercial spaces. Sound quality, of course, is extraordinary and the speakers have been voiced for warm, rich sonic reproduction by Definitive engineers to the same state-of-the-art, high-end standards as all Definitive loudspeakers.*

## These Remarkable Systems Feature:

- Absolute State-of-the-Art Sonic Performance for Music and Home Theater Perfection
- Low Diffraction Driver/Baffle Interface
- Easy-to-Install Metal Pivoting Dog Mounting System
- Ultra-Wide Dispersion for a Huge, Rich, Lifelike Soundfield Throughout Your Room
- Pure Aluminum Dome Tweeters w/Silk Surrounds
- Rigid Non-Resonant Glass-Filled Low Profile Frames
- Cast-Basket Bass/Midrange Drivers (except 63/A & 83/A)
- Beautiful Decorator-Approved Designer Styling
- Mounting Templates and Paint Masks Included
- Optional New Construction Rough-In Kits Available
- Easy-to-Paint and Moisture-Resistant
- Five-Year Parts and Labor Warranty (UIWs)

We offer a wide range of ultimate performance round, rectangular, bipolar, dual-channel and outdoor speakers which are perfect to suit your every architectural need (and your decorator's too). These critically acclaimed loudspeakers have been painstakingly engineered to ensure that they achieve the same level of superior sonic performance as our flagship floor-standing speakers, which are renowned for offering the finest sound quality possible. In addition, their subtle and understated, but beautifully sculpted, upgraded styling will complement any decor. Our architectural speakers utilize the same state-of-the-art components and technologies developed for our top-of-the-line speakers including high-definition cast-basket bass/midrange drivers and pure aluminum dome tweeters. One listen and you will know they are the finest sounding architectural in-wall/in-ceiling and outdoor speakers in the world.

## The Sonic Superiority of Definitive's Architectural Speakers

The most striking difference you will hear when you listen to Definitive speakers is the extremely big, open quality to the sound. Smooth natural sound is produced with a lifelike, three-dimensional character that really brings music and movies to life. It is as if the music or cinematic action is actually being performed live in your home. Of course their performance by all measurable parameters is superb, but it is their almost magical ability to suspend disbelief and recreate the illusion of a live performance which really sets our architectural speakers apart. And so does the way their velvety smooth high-definition midrange, crystal clear high frequencies, and deep, tight and impactful bass perfectly blend into an ultra-coherent wide-dispersion soundfield which will fill your home with sonic perfection.

## Our High-Definition Cast-Basket Bass/Midrange Drivers

All our architectural speakers (except the UIW 63/A and UIW 83/A) utilize Definitive-developed high-definition cast-basket bass/midrange drivers for significant performance advantages in the areas of bass reproduction, lifelike midrange clarity and dynamic range. These sophisticated drivers are engineering marvels which incorporate deeply drawn mineral-filled homopolymer cones, combined with butyl rubber dustcaps and surrounds, high-temperature vented voice coils and massive magnet structures. This combination of features assures high-definition, superb transient response, high-efficiency, high-power handling and extended linear response. In addition, the aerodynamically designed, magnetically inert, non-resonant cast baskets minimize reflections of the sound radiating from the back of the cones and preserve structural and magnetic integrity.

## Definitive's Moving-Coil Pure Aluminum Dome Tweeters

The accuracy of high frequency reproduction really sets apart a great loudspeaker. The Definitive-developed magnetic fluid-cooled moving-coil pure aluminum dome tweeters are of a unique design that synergistically brings together the performance advantages of metal domes (greater clarity) and soft domes (smoother sound and better dampening) in one state-of-the-art tweeter design. The pure aluminum dome is specially annealed (to "relax" the crystal structure) and acoustically loaded by a precisely configured acoustic phase plug/lens (to assure perfectly controlled, absolutely linear movement). In addition, the unique silk surround provides better dampening and wave termination. The audible benefits of all this highly advanced engineering include velvety smooth extended high frequency response (beyond 30 kHz), greatly reduced distortion, improved transient response, notably higher definition and crystal clear lifelike clarity.

## Non-Resonant Low-Diffraction Baffles Maintain Sonic Purity

A speaker's baffle, as well as the driver/baffle interface, plays a large part in its sonic performance. Diffraction, or the secondary radiation of sound caused by driver and baffle edges and other protrusions and surface anomalies, can color the sound and impart a boxy coloration.

The UIWs and AW Series speakers are carefully engineered to minimize diffraction problems. In addition, the resonant vibration of a speaker baffle can also impart coloration. We engineer the baffles for maximum stiffness and mold them from a special glass-filled polymer compound in order to eliminate baffle resonance which would otherwise interfere with the pure sound produced by Definitive's high-definition drivers. Finally, a special wall clamping system was designed which uses special high-tension clamps (and more of them) in order to further stiffen the baffle and eliminate unwanted resonance.

## The Sonic Benefits of our Extraordinary Bipolar UIW Speakers

Definitive Technology is famous for our high-end, floor-standing bipolar speakers. They have two complete sets of drivers which face in different directions and radiate sound in an omnidirectional pattern, the way sound is radiated in real life. We make two bipolar in-wall/in-ceiling loudspeakers, the UIW BP/A and UIW BPZ/A, which provide you with a lifelike balance of early-arrival information (giving focus, clarity and location data) and properly delayed-arrival information (enhancing spaciousness and conveying the lush three-dimensional soundstage of a live music or cinematic performance). The bipolars literally immerse you in a soundfield which is rich, warm, ultra-clear and vibrantly alive. In addition, the wide-dispersion characteristics of our bipolar speakers assure a superb panorama of lifelike sound for every listener in your room, wherever they sit or stand.

The UIW bipolars are perfect for use anywhere you want a high-performance, flush-mount architectural speaker, and they are clearly the in-wall or in-ceiling speakers of choice for side surrounds, rear surrounds or center rear surrounds for Dolby Digital\*, Dolby Surround\* or any home theater surround sound system.

## Choose Our Ultimate Performance Architectural Speakers for a Spectacular Built-in Home Theater System

In addition to bringing music into every room in your house, Definitive UIW speakers are perfect for a spectacular-sounding, high-performance home theater system. Choosing the perfect system is easy because all Definitive speakers are engineered to have the same timbral balance and sonic signature; so they can all be used together in any combination with excellent results. The top-of-the-line signature Definitive UIW home theater system would use three matching UIW BPZ/As or UIW 75s across the front and UIW BPZ/As as rear and/or side surround speakers. This system will sound great and deliver excellent bass without a separate subwoofer. However, you can add any of Definitive's superb powered subwoofers for even higher performance. Remember: any combination of UIWs will work well together and deliver superior performance; so pick the ones that best suit your budget as well as your specific size, design, mounting and listening requirements.

## Save Space with Our Unique Two-Channel DCS Speakers

With two complete channels in one (angled for proper separation) our UIW DCS speakers are the perfect space-saving solution for providing high quality stereo from a single in-wall/in-ceiling speaker anywhere in your home that you want beautiful music. The DCSs are also perfect as a single speaker two-channel rear surround for Dolby Digital, Prologic\* and EX\* or as a single rear plus side surround for Dolby EX (two DCSs will reproduce all four surround channels).

**UIW Warranty:** 5 years parts & labor. **AW100 Warranty:** 3 years parts & labor.

# Winning Architectural Speakers



## Reference High-Definition UIW BPZ/A Dual 6.5" Cast-Basket Two-Way Bipolar System

The remarkable UIW BPZ/A is a bipolar in-wall/in-ceiling loudspeaker. It is intended for use as a main system speaker (whose bipolar pattern gives you tremendously enhanced spaciousness plus unequaled dispersion throughout your room). In addition, it is a superb rear/side surround speaker for Dolby Digital and Dolby ProLogic systems and is also perfect for producing exceptional sounding music anywhere you want it. Creative design has resulted in a compact unit with a grille which is almost flush with the wall. A complex Linkwitz-Riley crossover seamlessly blends two 6 1/2" cast-basket drivers with two 1" pure aluminum dome tweeters for superb dynamic range and exceptional sonic performance.

**Mounting Dimensions**—Outer Flange Size: 8 1/2" W x 14 3/4" H. Cut-Out Size: 7 7/16" W x 13 5/16" H. Depth from Flange\*\*: 3 3/4". Frequency Response: 26Hz–30kHz. Drivers: Two 6 1/2" cast-basket drivers with two 1" pure aluminum dome tweeters. Rec. Amp.: 10–300 watts per channel. Nominal Imp.: 4–8 ohms.



## UIW 94/A Reference High-Definition 9" Cast-Basket Two-Way System

The UIW 94/A is the best sounding round in-wall/in-ceiling speaker available in the marketplace. It combines a long-throw signature quality cast-basket Definitive 9" bass/midrange driver with a 1" pivoting pure aluminum dome tweeter. Its 9" bass/midrange driver gives it the best bass performance of any round in-wall/in-ceiling speaker available.

**Mounting Dimensions**—Outer Flange Size: 10 3/4" diameter. Cut-Out Size: 9 5/8" diameter. Depth from Flange\*\*: 3 15/16". Frequency Response: 26Hz–30kHz. Drivers: 9" cast-basket bass/midrange driver and a 1" pivoting pure aluminum dome tweeter in a coaxial configuration. Rec. Amp.: 10–300 watts per channel. Nominal Imp.: 4–8 ohms.



## UIW BP/A Reference High-Definition Dual 5.25" Cast-Basket Two-Way Bipolar System

The UIW BP/A is a smaller version of the UIW BPZ/A with two 5 1/4" bass/midrange drivers plus two 1" pure aluminum dome tweeters.

**Mounting Dimensions**—Outer Flange Size: 7 1/8" W x 12 1/2" H. Cut-Out Size: 6 1/8" W x 11 7/16" H. Depth from Flange\*\*: 3 3/4". Frequency Response: 28Hz–30kHz. Drivers: Two 5 1/4" cast-basket drivers with two 1" pure aluminum dome tweeters. Rec. Amp.: 10–250 watts per channel. Nominal Imp.: 4–8 ohms.



## UIW 83/A High-Definition 8" Two-Way System

The UIW 83/A is a superb-sounding round 8" loudspeaker. It combines a stamped-basket 8" bass/midrange driver with a 1" pure aluminum dome tweeter. Its 8" bass/midrange driver gives it outstanding bass performance.

**Mounting Dimensions**—Outer Flange Size: 10" diameter. Cut-Out Size: 9" diameter. Depth from Flange\*\*: 3 15/16". Frequency Response: 27Hz–30kHz. Drivers: Stamped-basket 8" bass/midrange driver and a 1" pure aluminum dome tweeter in a coaxial configuration. Rec. Amp.: 10–250 watts per channel. Nominal Imp.: 4–8 ohms.



## UIW 75 Reference High-Definition Dual 6.5" Cast-Basket Two-Way D'Appolito System

Definitive's UIW 75 in-wall/in-ceiling features the same dual 6 1/2" drivers and 1" pure aluminum dome tweeter as our Grand-Prix award-winning BP3000TL flagship system's front array. They are perfectly blended with a complex phase-coherent Linkwitz-Riley crossover network with user-selectable equalization. The UIW 75s are perfect for LCR use in top-of-the-line home theaters or for producing exceptional sounding music throughout your home.

**Mounting Dimensions**—Outer Flange Size: 7 1/2" W x 16 5/8" H. Cut-Out Size: 6 1/2" W x 15 1/16" H. Depth from Flange\*\*: 3 15/16". Frequency Response: 26Hz–30kHz. Drivers: Two 6 1/2" cast-basket bass/midrange drivers, 1" pure aluminum dome tweeter in a D'Appolito array. Rec. Amp.: 10–300 watts per channel. Nominal Imp.: 4–8 ohms.



## UIW 64/A Reference High-Definition 6.5" Cast-Basket Two-Way System

The UIW 64/A is a smaller version of the UIW 94/A with a 6 1/2" rather than a 9" cast-basket bass/midrange driver and a 1" pivoting pure aluminum dome tweeter.

**Mounting Dimensions**—Outer Flange Size: 8 3/4" diameter. Cut-Out Size: 7 5/8" diameter. Depth from Flange\*\*: 3 7/8". Frequency Response: 28Hz–30kHz. Drivers: 6 1/2" cast-basket bass/midrange driver with a pivoting 1" pure aluminum dome tweeter. Rec. Amp.: 10–200 watts per channel. Nominal Imp.: 4–8 ohms.



## UIW 63/A High-Definition 6.5" Two-Way System

The UIW 63/A is a surprisingly affordable, yet superb sounding round loudspeaker. It combines a stamped-basket version of Definitive's signature 6 1/2" bass/midrange driver with a 1" pure aluminum dome tweeter.

**Mounting Dimensions**—Outer Flange Size: 8 3/4" diameter. Cut-Out Size: 7 5/8" diameter. Depth from Flange\*\*: 3 3/4". Frequency Response: 30Hz–30kHz. Drivers: stamped-basket 6 1/2" bass/midrange driver with a 1" pure aluminum dome tweeter in a coaxial configuration. Rec. Amp.: 10–200 watts per channel. Nominal Imp.: 4–8 ohms.



## UIW 65 Reference High-Definition 6.5" Cast-Basket Two-Way System

The UIW 65 is a smaller version of the UIW 75 with one, rather than two, 6 1/2" cast-basket bass/midrange drivers and our signature 1" pure aluminum dome tweeter blended with a Linkwitz-Riley crossover network with user-selectable equalization.

**Mounting Dimensions**—Outer Flange Size: 7 1/2" W x 10 3/16" H. Cut-Out Size: 6 1/2" W x 9 13/16" H. Depth from Flange\*\*: 3 15/16". Frequency Response: 28Hz–30kHz. Drivers: 6 1/2" cast-basket bass/midrange driver, 1" pure aluminum dome tweeter in a D'Appolito array. Rec. Amp.: 10–200 watts per channel. Nominal Imp.: 4–8 ohms.



## UIW DCS 6 Reference High-Definition 6.5" Cast-Basket Two-Way Dual-Channel System

The UIW DCS 6 is a unique, space-saving, dual-channel in-wall/in-ceiling speaker. It contains two complete full range speaker systems on one compact baffle. The two systems are angled to radiate in two directions thus enabling the UIW DCS 6 to be used as a single stereo speaker for all architectural applications, single unit rear surround speaker for Dolby Digital or as a pair of surround speakers to handle both the rear and side channels in Dolby EX systems.

**Mounting Dimensions**—Outer Flange Size: 8 1/2" W x 14 3/4" H. Cut-Out Size: 7 1/16" W x 13 5/8" H. Depth from Flange\*\*: 3 5/8". Frequency Response: 28Hz–30kHz. Drivers: Two cast-basket 6 1/2" bass/midrange drivers with two 1" pure aluminum dome tweeters. Rec. Amp.: 10–200 watts per channel. Nominal Imp.: 4–8 ohms.



## UIW 55 Reference High-Definition 5.25" Cast-Basket Two-Way System

The UIW 55 is a more compact version of the UIW 65. It blends a 5 1/4" cast-basket bass/midrange driver with a 1" pure aluminum dome tweeter (the same basic drivers used in the Grand Prix award-winning BP2002TL) with a sophisticated phase-coherent Linkwitz-Riley crossover network with user-selectable equalization.

**Mounting Dimensions**—Outer Flange Size: 6 1/16" W x 10 3/8" H. Cut-Out Size: 5 1/2" W x 9 1/4" H. Depth from Flange\*\*: 3 15/16". Frequency Response: 35Hz–30kHz. Drivers: 5 1/4" cast-basket bass/midrange driver, 1" pure aluminum dome tweeter. Rec. Amp.: 10–175 watts per channel. Nominal Imp.: 4–8 ohms.



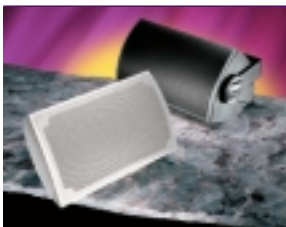
## UIW DCS 5 Reference High-Definition 5.25" Cast-Basket Two-Way Dual-Channel System

The UIW DCS 5 is a smaller version of the UIW DCS 6 with two 5 1/4" bass/midrange drivers and two 1" pure aluminum dome tweeters perfectly blended with two complex Linkwitz-Riley crossovers.

**Mounting Dimensions**—Outer Flange Size: 7 1/8" W x 12 1/2" H. Cut-Out Size: 6 1/8" W x 11 7/16" H. Depth from Flange\*\*: 3 5/8". Frequency Response: 35Hz–30kHz. Drivers: Two cast-basket 5 1/4" bass/midrange drivers with two 1" pure aluminum dome tweeters. Rec. Amp.: 10–175 watts per channel. Nominal Imp.: 4–8 ohms.

Specifications subject to change.

\* Registered trademarks. \*\* Including drywall thickness.



## AW 100 Reference High-Definition All-Weather Indoor/Outdoor System

The AW100 is a high-definition indoor/outdoor speaker which was developed from Definitive's Grand Prix Award-winning ProMonitor 100. Its superb high-definition sound is produced by a cast-basket 5 1/4" bass/midrange driver blended by a Linkwitz-Riley crossover to a 1" pure aluminum dome tweeter. It has an extremely compact non-resonant PolyStone™ cabinet with a unique, hideaway, pivoting mounting bracket. Also perfect for commercial installations in restaurants, bars, stores, etc.

**Mounting Dimensions:** 5 29/32" W x 5 23/32" D x 10" H. Frequency Response: 50Hz–30kHz. Drivers: 5 1/4" bass/midrange driver with a 1" pure aluminum dome tweeter. Rec. Amp.: 10–175 watts per channel. Nominal Imp.: 4–8 ohms. Available in black or white.

# Definitive Technology: The World's Most Highly-Honored Loudspeakers...



*Definitive's countless product awards from around the world clearly underscore our total commitment to sonic superiority.*

**Definitive Technology®**  
The Leader in High-Performance Loudspeakers®

11433 Cronridge Drive, Owings Mills, Maryland 21117, U.S.A.  
(410) 363-7148

Visit us at: [www.definitivetech.com](http://www.definitivetech.com)