



Model No: 1130U

1100 Series

UNDERMOUNT SINK

Product Specifications

www.oliverisinks.com

MATERIAL

Stainless Steel
304 Grade
16 Gauge

CONSTRUCTION

Fabricated basins
welded together

SHIPPING WEIGHT

(Packed)
20.0 lb

INSTALLATION METHOD

Designed to be
undermounted in a
solid surface top

CABINET

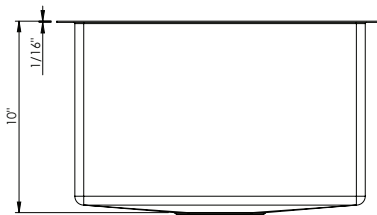
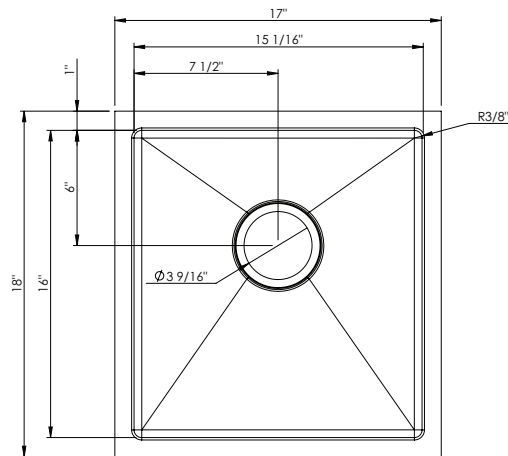
Minimum
18"

WARRANTY

All Oliveri sinks carry
Tasman sinkware's
Lifetime Limited
Buyer Warranty



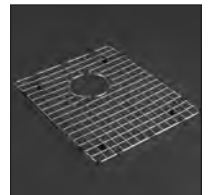
Model No: 1130U SINK DIMENSIONS



INCLUDED ACCESSORIES

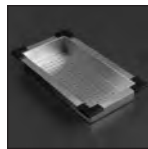


AC09 Basket
Waste x1

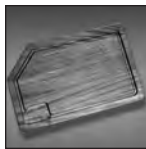


ACP115
Basin Protector

OPTIONAL ACCESSORIES



ACP112



ACP128

Undermount CAD files
(DXF & DWG format)
can be downloaded from
our web site
www.oliverisinks.com



Head Office and Manufacturing
Tasman Sinkware Pty Ltd
51 Naweena Rd. Regency Park
South Australia, 5010, AUSTRALIA
Tasman Sinkware

North America
1230 Railroad St
Corona CA 92882
northamerica@oliverisinks.com

Project / Customer Name: _____

Approval: _____

Date: _____