

NC200C product information sheet

Product Specifications

Fits most: 42" - 70" flat panels

Supports up to: 200 lbs (90.7 kg)

Tilt: -5° to +15°

Mounting profile: 5.79" (147mm)*

Maximum extension: 24.21" (615mm)

Universal & VESA compliant:

100x100 to 400x800

Mounting: Double-stud

Warranty: 5 year

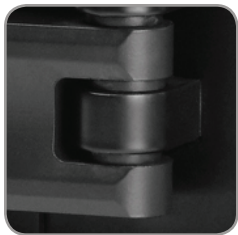
Color: Black

*adapter adds 1.25" (32mm)



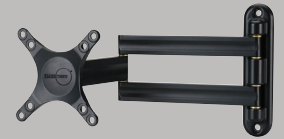
Product Benefits

- Tilt, pan and swivel for maximum viewing flexibility
- Frictionless Delrin™ washers at every joint for fluid movement
- Patent-pending 4-bar tilt mechanism for effortless adjustment
- Extruded aluminum arms for maximum support in a lightweight mount
- Includes universal adapter for greater panel compatibility
- Lift n' Lock™ allows you to easily attach your flat panel to the mount
- Integrated cable management guides wires
- 5.8" (147mm) sliding lateral on-wall adjustment
- Built-in screen leveling
- Open architecture provides easy access to in-wall wiring
- Locking system secures panel to mount
- Wall plate covers conceal mounting hardware
- Installation template for simple and accurate mounting
- Includes complete hardware kit



The New Classics have frictionless Delrin™ washers at every joint, giving you the benefit of smooth movement.

Series



NC30C



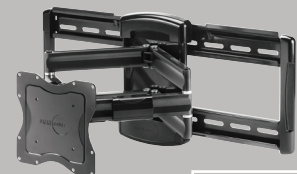
NC80C



NC100C



NC125C



NC200C



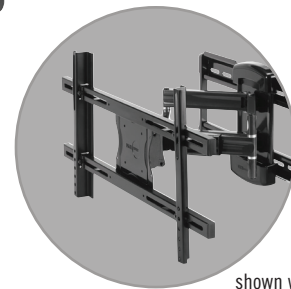
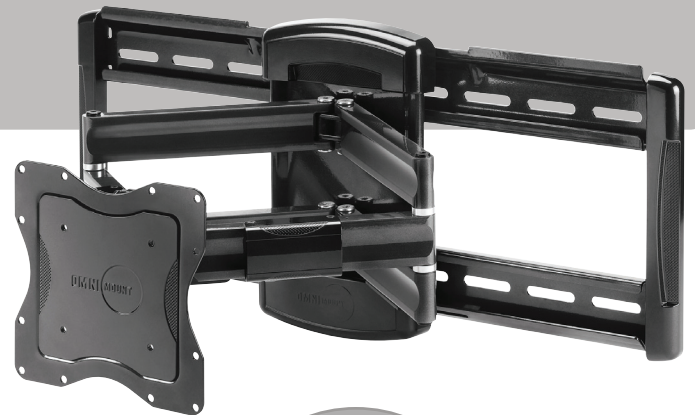
OmniMount, an innovator of A/V mounts and furniture for more than a quarter century, is the choice of professional installers and the brand most recommended by flat panel manufacturers. The New Classics Series puts a fresh spin on an old favorite, providing fixed, tilt and cantilever mounts with improved functionality – not to mention a new clean design. With enhanced functionality and a streamlined design, the NC200C is a sensible cantilever mounting solution for extra large flat panels.



NC200C technical data sheet



OmniMount, an innovator of A/V mounts and furniture for more than a quarter century, is the choice of professional installers and the brand most recommended by flat panel manufacturers. The New Classics Series puts a fresh spin on an old favorite, providing fixed, tilt and cantilever mounts with improved functionality – not to mention a new clean design. With enhanced functionality and a streamlined design, the NC200C is a sensible cantilever mounting solution for extra large flat panels.



shown with adapter

Product Specifications

Fits most: 42" - 70" flat panels

Supports up to: 200 lbs (90.7 kg)

Tilt: -5° to +15°

Mounting profile: 5.79" (147mm)*

Maximum extension: 24.21" (615mm)

Universal & VESA compliant: 100x100 to 400x800

Mounting: Double-stud

Warranty: 5 year

Color: Black

*adapter adds 1.25" (32mm)

Product Benefits

- Tilt, pan and swivel for maximum viewing flexibility
- Frictionless Delrin™ washers at every joint for fluid movement
- Patent-pending 4-bar tilt mechanism for effortless adjustment
- Extruded aluminum arms for maximum support in a lightweight mount
- Includes universal adapter for greater panel compatibility
- Lift n' Lock™ allows you to easily attach your flat panel to the mount
- Integrated cable management guides wires
- 5.8" (147mm) sliding lateral on-wall adjustment

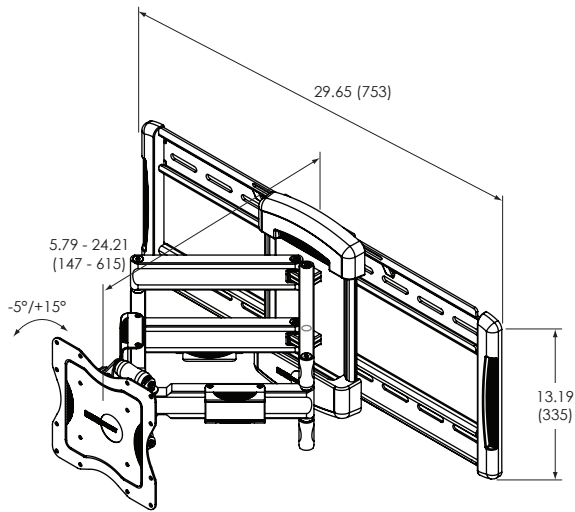
- Built-in screen leveling
- Open architecture provides easy access to in-wall wiring
- Locking system secures panel to mount
- Wall plate covers conceal mounting hardware
- Installation template for simple and accurate mounting
- Includes complete hardware kit

	Stock Code	Packaging UPC	MC UPC
Americas	1004385-1	728901023156	728901716607
International	1004385INT-1	728901023156	728901716607

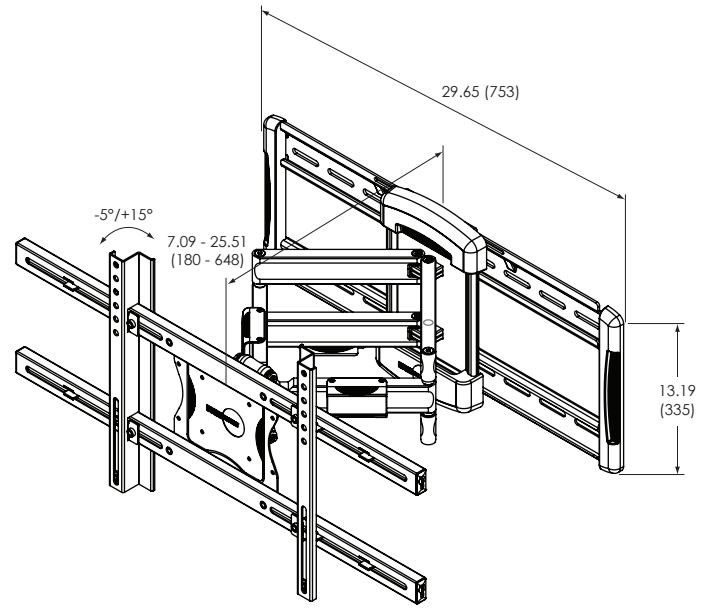
	Dimensions WxDxH Inches (mm)	Wt lbs (kg)
Product Box	20.5 x 38 x 9.5 (520x965x240)	50.9 (23.1)
Master Carton	NA	NA

Box Contents	Qty
Cantilever wall plate	1
Cantilever arm	1
Monitor plate	1
Cable management channel	4
Wall plate cover	2

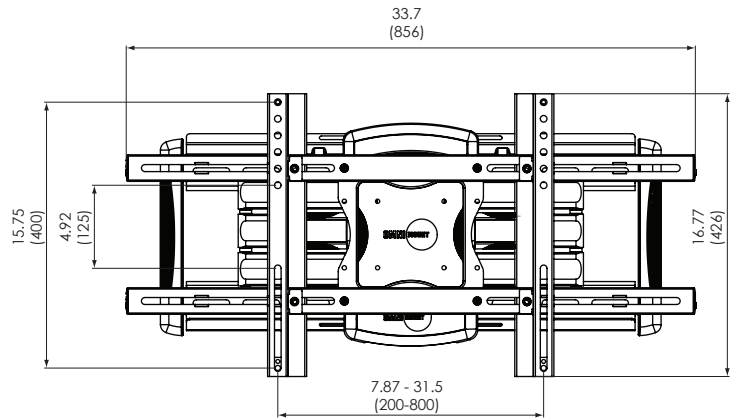
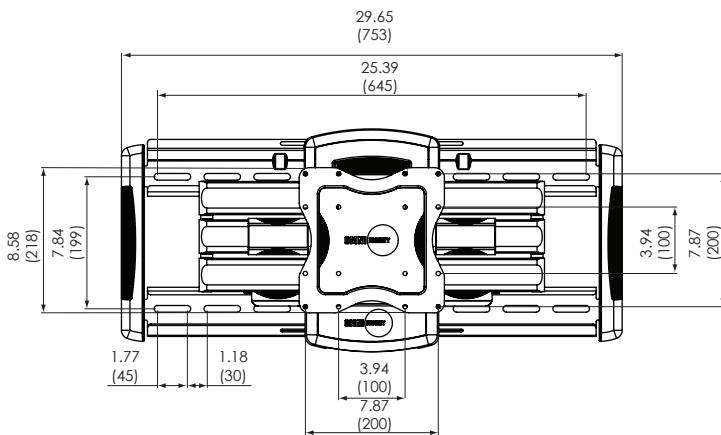
Box Contents	Qty
Vertical adapter rail	2
Horizontal adapter rail	2
Complete mount installation hardware kit	1
Complete panel attachment hardware kit	1
Instruction manual	1



Without Adapter



With Adapter



inches (mm)