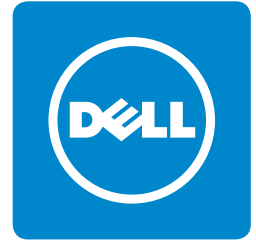
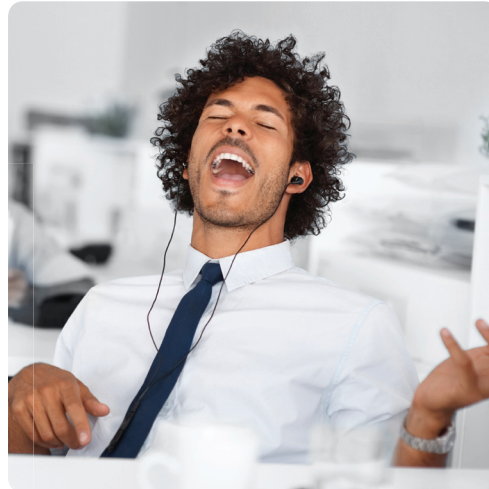


Dell™ XPS™ 8300: X8300-1844NBK

Ignite your senses



Here's how...

Fast Intel® Core™ i7 processor for demanding multitasking

Store your family photos, videos and music on the 1TB* hard drive

Connect portable media devices easily with a convenient recessed media tray

Easy connectivity with wireless N card and Ethernet port

Enjoy added power

460W power supply enables stunning graphics and expandability

Concert hall sound

Integrated 7.1 with THX TruStudio PC™ sound for an exceptional audio experience

Designed with you in mind

Manage your media easily with a front-mounted media card reader

Your entertainment station

Quickly and easily access your favorite music, videos, and content with Dell™ Stage



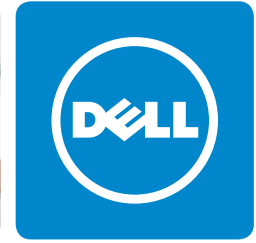
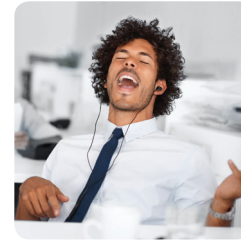
You can tell it's Dell



Dell™ XPS™ 8300: X8300-1844NBK

Specifications

Processor	Intel® Core™ i7-2600
Processor Specs	Quad Core, 3.4GHz, 8MB Cache
Memory*	6GB 1333MHz DDR3 (2x2GB, 2X1GB)
Video Graphics*	1GB AMD Radeon™ HD 6450
Hard Drive*	1TB* 7200RPM SATA Hard Drive
Multimedia Drive	16X DVD+/-RW Drive
Display	No Monitor
Operating System	Genuine Windows® 7 Home Premium (64-bit)
Digital Media	19-in-1 Media Card Reader
Networking	Integrated 10/100/1000 Gigabit Ethernet
Wireless Connectivity	Dell™ Wireless-N
Sound	Integrated 7.1 Channel HD Audio / No Speakers
Keyboard	Dell™ USB Multimedia Keyboard
Pointing Device	Dell™ Premium Laser Mouse
Power	460W
I/O Ports	8 USB 2.0 (2 top tray, 2 front, 4 back) VGA, HDMI™ eSATA, S/PDIF 1 Microphone, 1 Headphone, 7.1 Channel Audio Out RJ45 (Gigabit Ethernet) 1 PCI, 3 PCIeX1, 1 PCIeX16, 1 Mini-PCIe
Width	7.3" (18.5cm)
Depth	17.9" (45.5cm)
Height	16.1" (40.9cm)
Warranty	1-Year Limited Hardware Warranty*, In-Home Service After Remote Diagnosis* and 24 x 7 Phone Support
Software	
Productivity	Microsoft® Office Starter 2010* Preloaded (purchase product key to activate full-featured Office software)
Multimedia	Dell™ Stage Software
Security and Support	McAfee SecurityCenter with Anti-Virus, Anti-Spyware, Firewall (30-Day Trial)



Why XPS™ 8300?

With a powerful processor and high-performance entertainment features, you have what it takes to be a multitasking media mogul.

Key Features

- High-performance Intel® Core™ i7 processor
- Integrated 7.1 with THX TruStudio PC™ sound
- One click access to your photos, music and videos through Dell™ Stage
- Front-mounted media card reader for easy access
- HDMI™, VGA and 8 USB ports
- 460W power supply
- Recessed media tray with 2 angled USB ports

***Microsoft Works 9 or Microsoft Office Starter 2010:** Will include Microsoft Works 9.0 or Microsoft Office Starter 2010. Microsoft Works does not include Microsoft Word. If product includes Microsoft Office Starter 2010 preloaded and you wish to activate a full Microsoft Office 2010 Suite, you must purchase a Product Key. Certain Microsoft software products included with this computer may use technological measures for copy protection. In such case, you will not be able to use the Product Key if you do not activate it with Microsoft. Activation may be completed by Internet or telephone (toll charges may apply). Product activation procedures and Microsoft's privacy policy will be detailed during initial launch of the Product, or upon certain reinstallations of the software products or reconfigurations of the computer. ***Limited Hardware Warranty:** For a copy of Ltd Hardware Warranty, write Dell USA LP, Attn: Warranties, One Dell Way, Round Rock, TX 78682 or see www.dell.com/warranty. ***In-Home Service After Remote Diagnosis:** Remote Diagnosis is determination by online/phone technician of cause of issue; may involve customer access to inside of system and multiple or extended sessions. If issue is covered by Limited Warranty and not resolved remotely, technician and/or part will be dispatched, usually in 1 or 2 business days following completion of Remote Diagnosis. Dell sells In-Home Service provided by the following: Dell In-Home Service provided by Dell Marketing LP.; BancTec In-Home Service provided by BancTec Third Party Maintenance, Inc.; and QualxServ In-Home Service provided by QualxServ LLC. Third parties may be used to deliver the in-home service. Availability varies. Other conditions apply. For complete details about In-Home Service, visit dell.com/servicecontracts. ***Hard Drives:** GB means 1 billion bytes and TB equals 1 trillion bytes; actual capacity varies with preloaded material and operating environment and will be less. ***Graphics and System Memory:** GB means 1 billion bytes and TB equals 1 trillion bytes; significant system memory may be used to support graphics, depending on system memory size and other factors. ***Trademark and Copyright Notices:** Intel, Pentium and the Intel Inside logo are trademarks or registered trademarks of Intel Corporation or its subsidiaries in the United States and other countries. Microsoft and Windows are registered trademarks of Microsoft Corporation.

