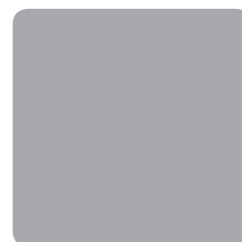
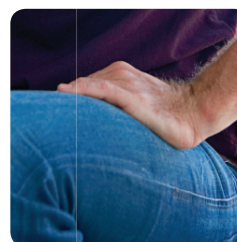
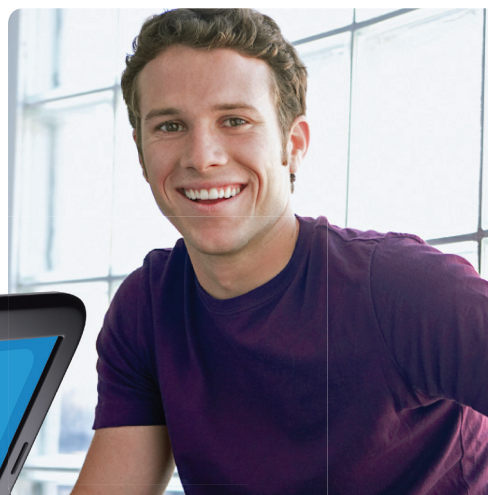


Dell™ XPS™ 15: X15L-1024ELS

Shock your senses



UPC 884116061458
Model No. X15L-1024ELS

Here's how...

Leading edge NVIDIA® graphics help bring your media to life

High fidelity on JBL® speakers with Waves MaxxAudio®

Clear video chatting with HD webcam* and pre-installed Skype™

High-definition and digital connectivity with HDMI™ and mini DisplayPort

Bring entertainment to life

Leading edge NVIDIA® graphics helps bring your media to life with breathtaking detail

Power you can feel

Intel® Core™ i7 processor for high-speed media multitasking

Experience immersive audio

High fidelity on JBL® speakers for immersive surround-sound audio, booming bass and razor-sharp clarity

Seeing is believing

16:9 aspect ratio delivers cinema-like viewing experience

Greet the world

Experience crystal-clear video chatting with the HD webcam* and pre-installed Skype™



*Internet connection required.

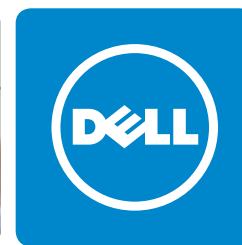
Dell™ XPS™ 15: X15L-1024ELS

Specifications

Processor	Intel® Core™ i7-2630QM
Processor Specs	Quad Core, 2.0GHz with Turbo Boost 2.0 up to 2.9GHz, 6MB Cache
Memory*	6GB, DDR3, 1333MHz, 2 DIMM
Video Graphics*	1GB NVIDIA® GeForce® GT 525M Graphics* with Optimus Technology
Hard Drive*	640GB* 7200RPM SATA Hard Drive
Multimedia Drive	8X CD/DVD Burner (Dual Layer DVD+/-R Drive) TRAY-LOAD
Display	15.6" High Definition (720p) WLED with TrueLife™ (1366x768)
Operating System	Genuine Windows® 7 Home Premium (64-bit)
Digital Media	9-in-1 Media Card Reader
Networking	Integrated 10/100/1000 Gigabit Ethernet
Wireless Connectivity	Intel® Centrino® Wireless-N 1030 with Bluetooth®
Bluetooth	Bluetooth® 3.0 - tied to wireless card
Sound	JBL® 2.1 Designed & Certified Speakers + Waves MaxxAudio® 3 / 20W peak audio performance = 2 X 4W + 12W sub-woofer
Keyboard	English Backlit Keyboard, Chiclet style
Pointing Device	Multi-Touchpad with integrated scrolling & gestures
Webcam	Built-in 2.0MP Skype™-certified HD Webcam
Power	6-Cell Lithium Ion Battery (56 WHr)
I/O Ports	2 USB 3.0 1 USB 2.0/eSATA Combo with PowerShare 1 HDMI™, 1 Mini DisplayPort 2 Headphone with SPDIF Support, 1 Microphone RJ45 (Gigabit Ethernet)
Width	15" (381mm)
Depth	10.4" (265.4mm)
Height	1.3" (32.2mm) Front / 1.5" (38.2mm) Rear
Starting Weight*	5.96lbs (2.7kg)* with Standard 6-Cell Battery
Warranty	1-Year Limited Hardware Warranty*, Mail-In Service and 24 x 7 Phone Support

Software	
Productivity	Microsoft® Office Starter 2010* Preloaded (purchase product key to activate full-featured Office software)
Multimedia	Dell™ Stage Software
Security and Support	McAfee SecurityCenter with Anti-Virus, Anti-Spyware, Firewall (30-Day Trial)

***Microsoft Works 9 or Microsoft Office Starter 2010:** Will include Microsoft Works 9.0 or Microsoft Office Starter 2010. Microsoft Works does not include Microsoft Word. If product includes Microsoft Office Starter 2010 preloaded and you wish to activate a full Microsoft Office 2010 Suite, you must purchase a Product Key. Certain Microsoft software products included with this computer may use technological measures for copy protection. In such case, you will not be able to use the Product Key if you do not activate it with Microsoft. Activation may be completed by Internet or telephone (toll charges may apply). Product activation procedures and Microsoft's privacy policy will be detailed during initial launch of the Product, or upon certain reinstallations of the software products or reconfigurations of the computer. ***Limited Hardware Warranty:** For a copy of Ltd Hardware Warranty, write Dell USA LP, Attn: Warranties, One Dell Way, Round Rock, TX 78682 or see www.dell.com/warranty. ***Laptop Weights:** Weights vary depending on configuration and manufacturing variability. ***Wireless Capability:** Where wireless access is available. Additional access charges apply in some locations. ***Hard Drives:** GB means 1 billion bytes and TB equals 1 trillion bytes; actual capacity varies with preloaded material and operating environment and will be less. ***Graphics and System Memory:** GB means 1 billion bytes and TB equals 1 trillion bytes; significant system memory may be used to support graphics, depending on system memory size and other factors. ***Trademark and Copyright Notices:** Intel, Pentium and the Intel Inside logo are trademarks or registered trademarks of Intel Corporation or its subsidiaries in the United States and other countries. Microsoft and Windows are registered trademarks of Microsoft Corporation.



Why XPS™?

Brace yourself for the adrenaline rush you'll experience with Dell XPS™ laptops. Bring your movies, music and more to life with leading edge graphics, immersive audio and a stunning display.

Key Features

- Leading edge NVIDIA® graphics help bring your media to life
- Intel® Core™ i7 processor for high-speed media multitasking
- High fidelity on JBL® speakers with Waves MaxxAudio®
- 16:9 aspect ratio delivers cinema-like viewing experience
- HD webcam
- Pre-installed Skype™

