

Welcome to Skype™

With Skype™ on your TV, you can enjoy large screen video calls.

NOTE

- It is free to create a Skype account and make Skype-to-Skype voice and video calls.
- Skype is not a replacement for your telephone and cannot be used for emergency calls.
- For detailed Skype information, please visit the following website:
<http://www.skype.com/>
- Calling phones and mobiles, sending SMS (short message service) mail and saving instant messages are not possible.
- You might not be able to enjoy Skype on the TV while using a specific function. In such cases, stop using the function.
- Depending on the Skype version being used by the contact you are calling, you may not be able to perform some operations.
- Before using Skype, check "Terms of Use". (See page 4.)
- Skype, the Skype Logo and the S logo and other marks indicated on these instructions are trademarks of Skype Limited or other related companies.

Preparation

To use Skype, you must first make sure you have the following:

- A broadband Internet connection
- Communication camera for Skype
- A registered Skype account, or an e-mail address to create a new Skype account

NOTE

- Depending on the network environment used, transmission qualities of voice or pictures may deteriorate.

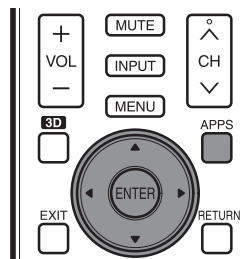
Buying the communication camera

Follow the guidance found on the website below and purchase a communication camera compatible with Skype.
<http://freetalk.me/product/elite/>

NOTE

- The Skype FREETALK® Communication camera is not supplied by Sharp.
- Other cameras and webcams are not compatible with your TV.

Getting Started



Connecting the Communication Camera

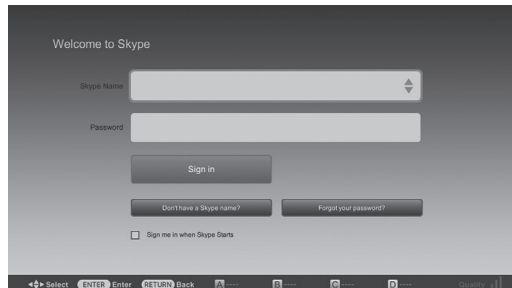
- 1 Connect the communication camera directly to the USB 1 terminal on the TV.

NOTE

- Do not use a USB hub.
- Set the communication camera on the top left of the TV.

Selecting Skype on the Application Window

- 2 Press **APPS** to display the application window.
- 3 Press **▲/▼/◀/▶** to select "Skype", and then press **ENTER**.
 - The Welcome to Skype screen is displayed.
 - When using this TV to access Skype for the first time, the Terms of Use appears on the screen. Press **▲/▼** to select "Agree", and then press **ENTER**. (You must select "Agree" to use the application.)



NOTE

- If the Welcome to Skype screen is not displayed, check the network connection.

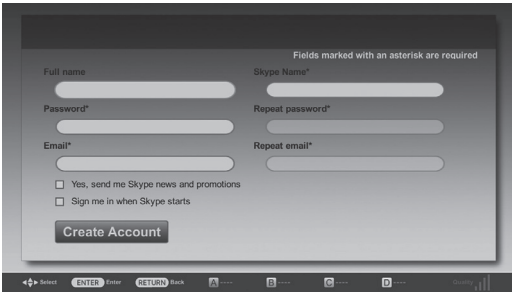
Creating a New Skype Account

- If you already have a Skype account, you can use that account. (Go to step 8 in **Sign In to Skype**.)
- 4 Select "Don't have a Skype Name?" on the Welcome to Skype screen, and then press **ENTER**.
 - 5 The Create a new Skype account screen will appear. If you agree to all of the terms and conditions, select "Accept", and then press **ENTER**.

NOTE

- For more information on the terms and conditions, refer to the following:
 - Skype Terms of Service
(<http://www.skype.com/intl/en/legal/terms/tou>)
 - Skype Privacy Statement
(<http://www.skype.com/legal/privacy/general>)

6 Enter your "Full name", "Skype Name", "Password", and "Email" address.



7 Select "Create Account", and then press **ENTER**.

Sign In to Skype

8 Enter your registered "Skype Name" and "Password".

9 Select "Sign in", and then press **ENTER**.

NOTE

- If you have signed in on the TV before:
 - Select the "Skype Name", and then press **ENTER**.
 - Select your Skype name from the recently used accounts, and then press **ENTER**.
- By ticking the "Sign me in when Skype starts", you can enable automatic sign in.

Using Skype™

Skype Main Menu

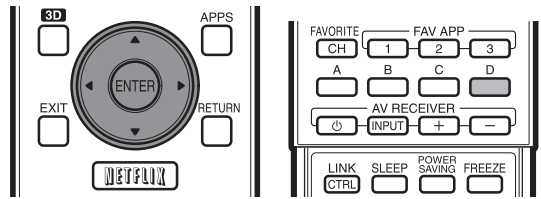


- Your Skype Name, online status*, Skype credit and profile picture
- The picture from your communication camera
- Notification area
- Menu items: "Contacts", "History", "Profile" and "Settings"

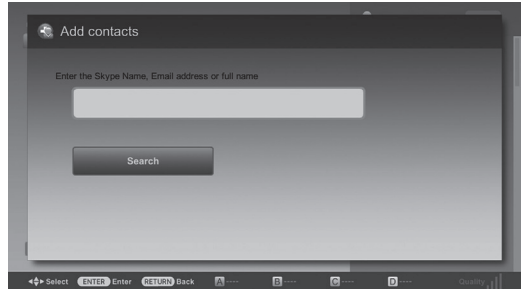
* Status icons

Icon	Status
	Online
	Away
	Do not disturb
	Invisible/Offline

Adding Your Friends to Your Contact list

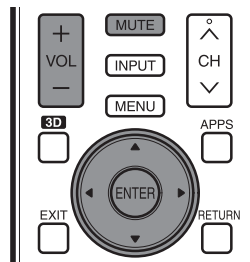


- If this is not your first time using Skype, your previously registered contacts will appear.
- Select "Contacts" on the Skype main menu, and then press **ENTER**.
 - Press **D** (add contact).

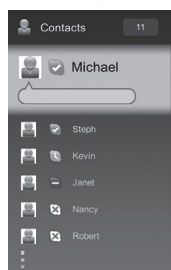


- Enter the Skype name, E-mail address, or full name of the person you want to add.
- Select "Search", and then press **ENTER**.
- Select the person you want to add from the search result, and then press **ENTER**.
- With the software keyboard, enter a message to introduce yourself and send it with "Done".
 - "Contact requests" will be sent to the person added to the Contact list.

Selecting a Contact and Starting a Video Call

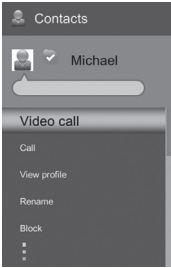


- Select "Contacts" in the Skype main menu, and then press **ENTER**.
- Select a contact who is online from your list of Contacts, and then press **ENTER**.



3 Select "Video call" on the Contacts Option menu, and then press **ENTER**.

- If you want to make a voice call, select "Call".



Contact Option menu

Video call: Make a video call.

Call: Make a voice call.

View profile: View the selected contact's profile.

Rename: Rename the selected person.

Block/Unblock: Block/Unblock selected person from contacting you.

Send Voicemail: Send a voicemail message to the selected contact. (Voicemail is a paid service. Visit the following website for more information: <http://www.skype.com/>)

Remove: Remove the person from your Contacts list.

Video Call Screen (Normal View)



- ① Video call menu*
- ② The picture from contact person's communication camera
- ③ The picture from your communication camera
- ④ Video quality indicator (Depending on the network environment)

* Video call menu

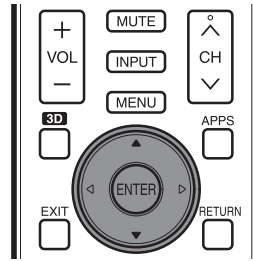
Once a video call has started, the following items will be available.

- End call
- Hold/Resume
- Dial pad
- Mute/Unmute (microphone)
- Stop my video/Start my video
- Full view

NOTE

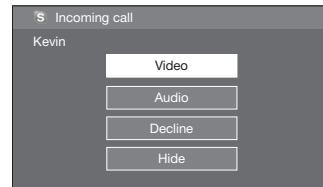
- To change the speaker volume of the unit, press **VOL +/–** or **MUTE** on the remote control.

Receiving Skype Calls



You can receive Skype calls even while watching a TV programme or video.

When you receive an incoming call, a window will appear in the bottom right-hand corner of the screen. Select "Video", "Audio", "Decline" or "Hide", and then press **ENTER**.



NOTE

- You cannot receive calls when you are signed out of Skype, when the TV is in standby mode, or when the power is off.
- Skype on the TV cannot be activated while you are using a certain specific function. In that case, stop using the function.

Other Useful Functions

On the Skype main menu, you can manage and adjust your call history.

History

- Shows your call history.
- Allows you to call a person displayed in Call History and to accept or block contact requests.

NOTE

- If the time displayed in History is incorrect, make the necessary adjustments in Initial Setup > EZ Setup > Location & Time.

Profile

Set up the following items.

Edit profile: Edit your profile.

Online status: Change your online status.

Settings

Set up the following items.

General settings: Select whether you want to sign in automatically when you enter Skype.

Change password: Change your password.

Video settings: Adjust the privacy settings for video.

Privacy settings: Choose whom you wish to receive calls from.

Block contacts: Set the person who you do not want to hear.

The following will be displayed when you get access to Skype for the first time.

Terms of Use

PLEASE READ CAREFULLY

1. All Skype features are offered by Skype under the terms of the Skype end user license agreement .
2. You shall not promote, include, display, provide, or make available any content which:
 - (a) may be considered: sexually explicit (including the use of sexual terms, images and nudity);vulgar, profane, offensive or obscene; defamatory, libellous, slanderous; religiously or racially offensive or otherwise promoting hate towards individuals or groups; promoting terrorist or other criminal or illegal activities; promoting gambling, alcohol, tobacco, firearms or ammunition; otherwise unlawful; or
 - (b) infringes anyone else's intellectual property rights, other proprietary rights or rights of privacy; You undertake and represent that you own or have sufficient permission to use all content that you include in, display through, provide, or make available through our product.
3. You are solely responsible for any content that you upload, submit, post, transmit or display through the Skype on our product -(" use" or "used") and that SHARP is not responsible to you or any third party for any content that is used by you or any other Skype user.
4. You will not reverse engineer or attempt to derive the source code for any Skype software included in our product, or remove or separate from our product , or copy, redistribute or otherwise provide to any third parties any Skype software that is included in our product.
5. The Skype features do not support any emergency calls.
6. SHARP will not guarantee that you cannot utilize the Skype features under the following conditions
 - In case the malfunction caused by the Skype server happens
 - In case the malfunction of the network happens
7. IN NO EVENT SHALL SHARP AND/OR ITS AFFILIATES BE LIABLE, WHETHER IN CONTRACT, WARRANTY, TORT (INCLUDING NEGLIGENCE), PRODUCT LIABILITY OR ANY OTHER FORM OF LIABILITY, FOR:
 - SPECIAL OR CONSEQUENTIAL DAMAGES (INCLUDING WITHOUT LIMITATION ANY LOSS OF OR CORRUPTION TO DATA, INTERRUPTION, COMPUTER FAILURE OR PECUNIARY LOSS) ARISING OUT OF THE USE OR INABILITY TO USE THE SKYPE; AND
 - ANY LOSS OF INCOME, BUSINESS OR PROFITS (WHETHER DIRECT OR INDIRECT) ARISING OUT OF THE USE OR INABILITY TO USE THE SKYPE;
 - ANY LOSS OR DAMAGE WHICH MAY BE INCURRED BY YOU AS A RESULT OF;
 - ▶ ANY DISRUPTIONS OR DELAYS IN ANY COMMUNICATION WHEN USING THE SKYPE
8. These Terms of Use supplement and do not replace, any terms, conditions or disclaimers, which were provided with your purchase of the product. All such terms, conditions and disclaimers remain in full force and effect.
9. Your use of the Skype on our product constitutes your agreement to be bound by these Terms of Use. You understand and agree that SHARP will treat your use of the Skype on our product as acceptance of the Terms of Use from that point onwards.

You agree that the use of the Skype on our product is at your own risk.

- ELITE and the ELITE logo are registered trademarks of Pioneer Corporation.

SHARP®

SHARP ELECTRONICS CORPORATION