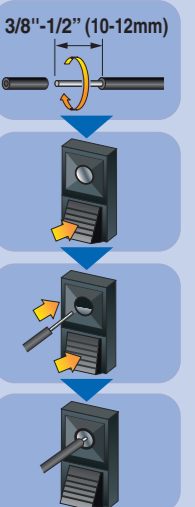
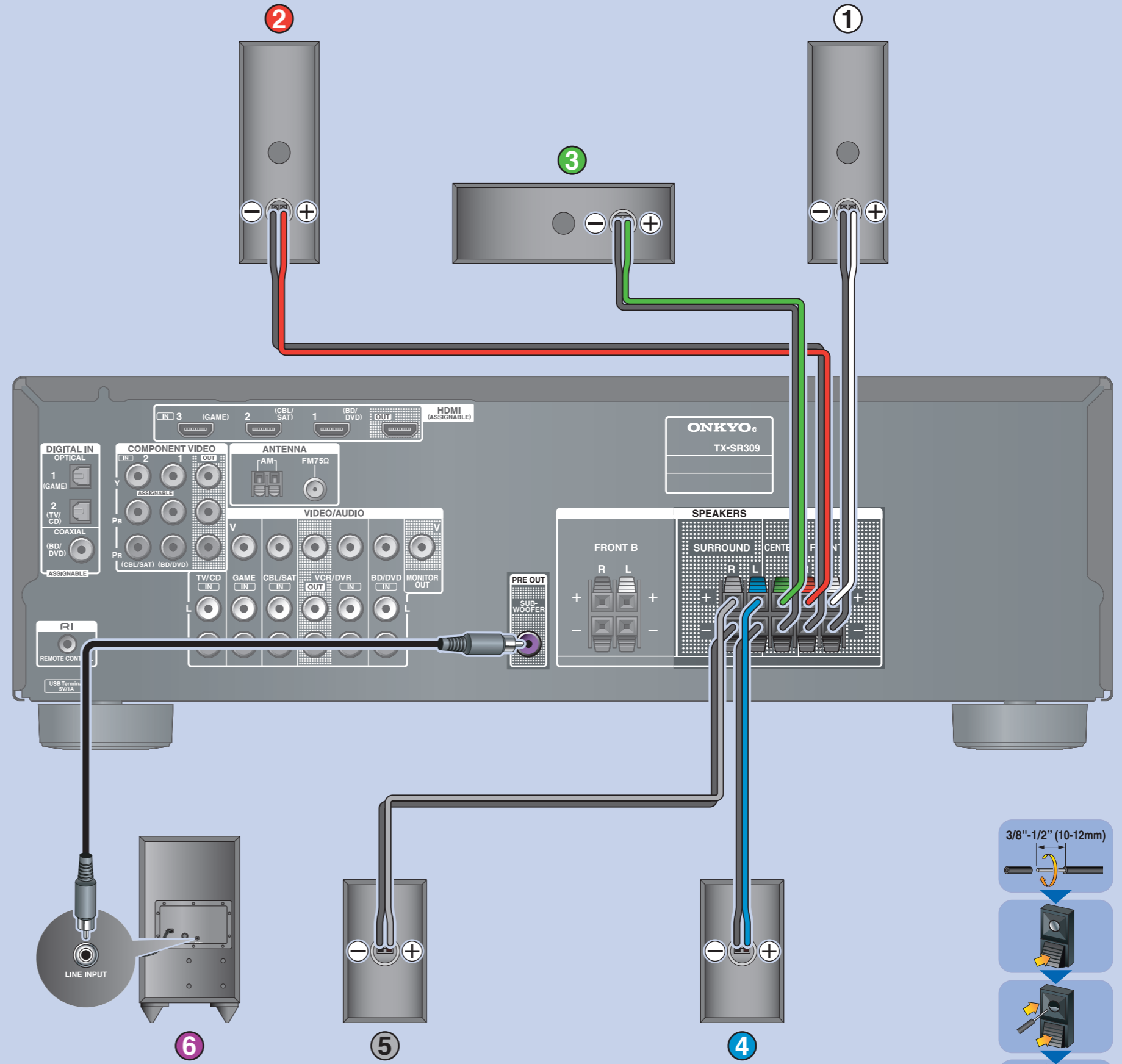
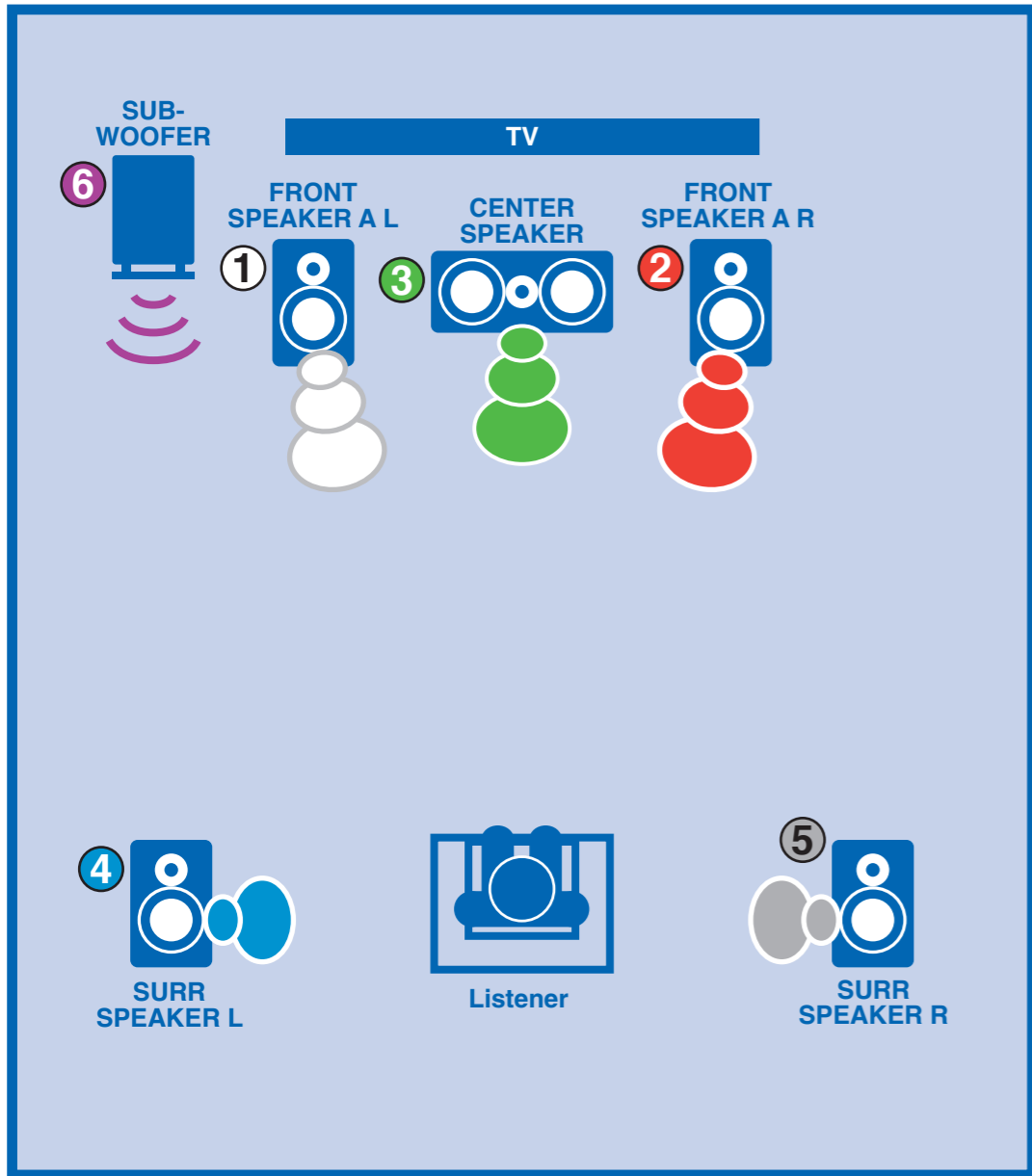


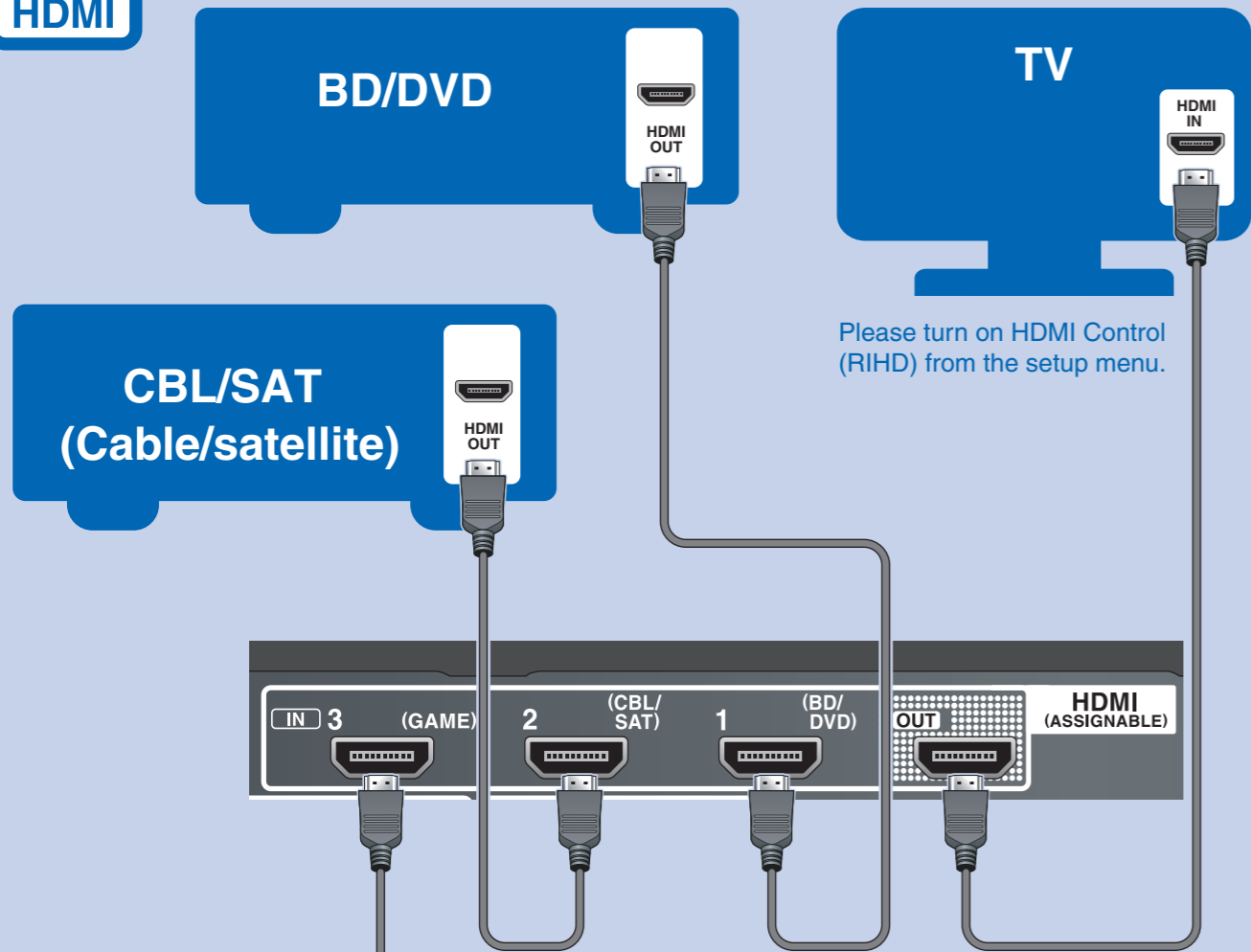
QUICK SETUP

Model: TX-SR309

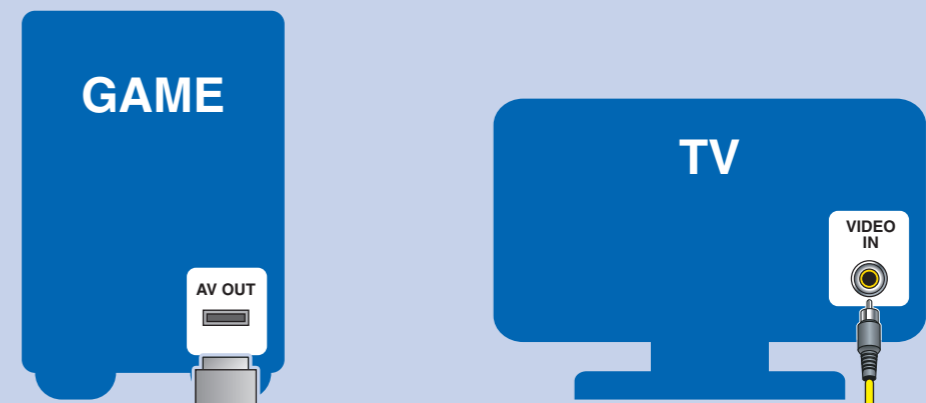




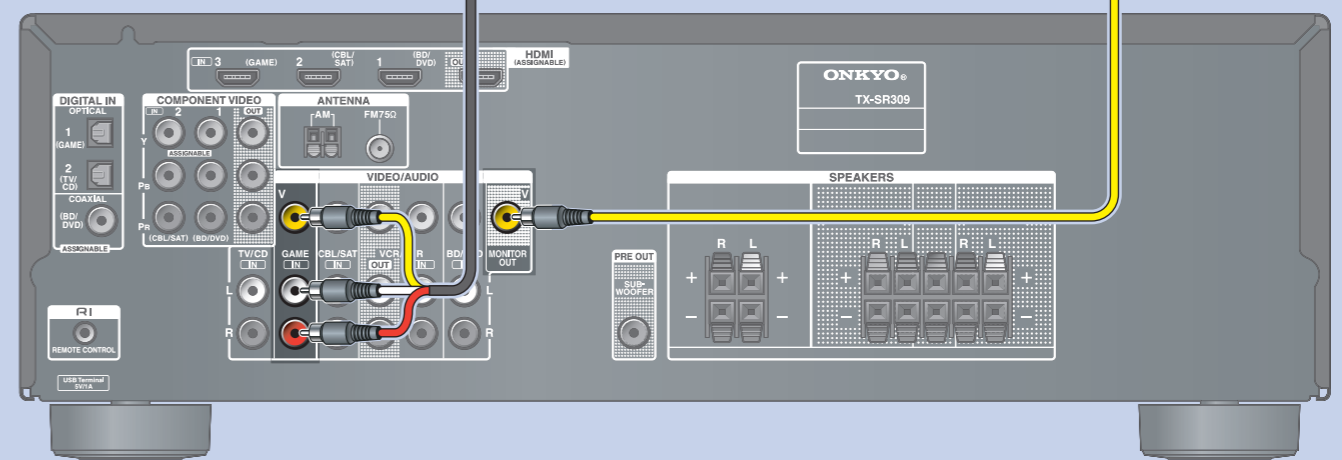
Connecting a TV with Audio Return Channel



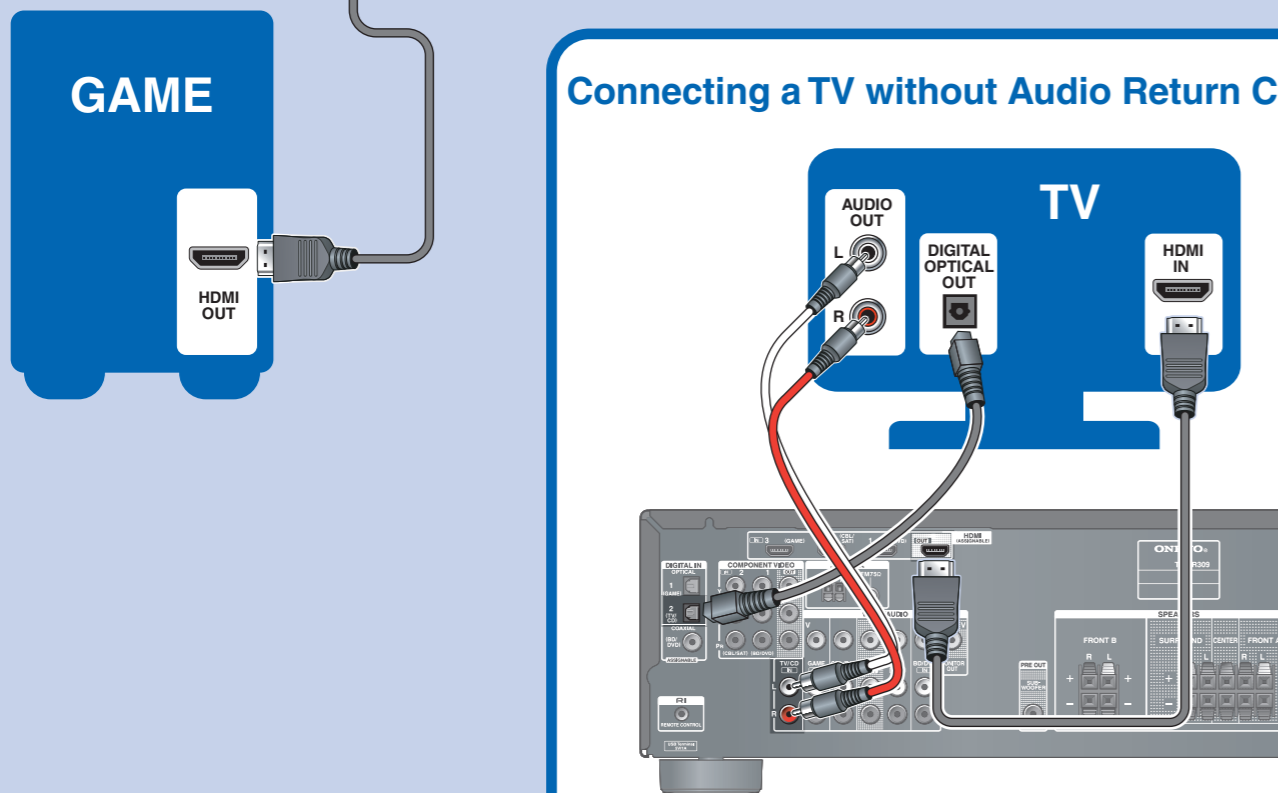
Please turn on HDMI Control (RIHD) from the setup menu.



Make a connection with the MONITOR OUT V when you watch videos on the TV.

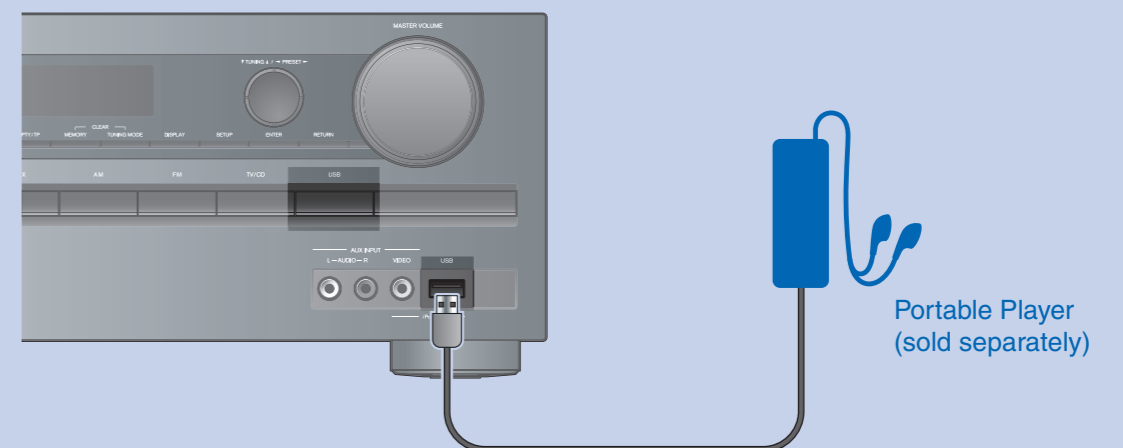


Connecting a TV without Audio Return Channel



When there is no OPTICAL output in the TV, connect the analog output. The function of HDMI THRU can be used by turning on HDMI Control (RIHD) from the setup menu.

Connecting a Portable Player



Portable Player (sold separately)