

Application:

Stereo speaker or home theater center/front/surround ideal for large, medium, and small rooms.

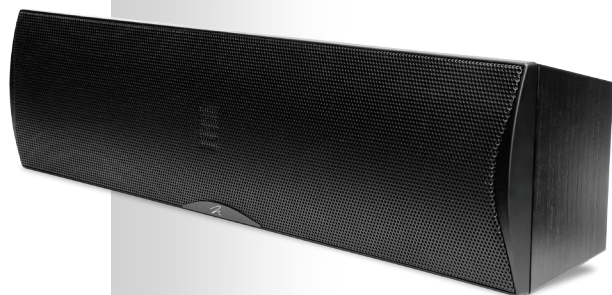
Inspired by MartinLogan's ultra-high-end electrostatic loudspeakers, the Motion Series was created by our dedicated in-house engineering team to provide stunningly compelling sound for your ultimate-performance audio system.

Key Features:

- Folded Motion™ tweeter
- Dual 4-inch woofers. Paper cones doped for stability and damping. Rigid structure dust cap.
- Precision Vojtko™ crossover with custom air core coil and low DCR steel laminate inductors; polyester film and low DF electrolytic capacitors
- Bookshelf or on-wall installation
- Convenient push-style binding posts

Finish:

Black Ash



AUDIOPHILE PERFORMANCE WITHOUT AN AUDIOPHILE PRICE

Inspired by the clarity and detail of our ultra-high-end electrostatic loudspeakers, Motion C features an exquisite Folded Motion tweeter and powerful bass technology in a compact and affordable package. Key to Motion C's performance is the lightning fast response of the tweeter's light-weight diaphragm combined with a large surface area (8-times that of a typical one-inch dome tweeter) which together achieve a smooth, refined sound with stunning dynamic range and jaw-dropping clarity. Motion C's compact cabinet is wrapped in finely finished real black ash wood veneer.

Frequency Response	70–25,000 Hz ± 3dB
Sensitivity	90 dB/2.83 volts/meter
Impedance	4 Ohms. Compatible with 4, 6, or 8 Ohm rated amplifiers.
Crossover Frequency	2600 Hz
High Frequency Driver	1 x 1.4" (2.6 x 3.6 cm) Folded Motion Transducer with 5.25 x 1.75" (13.3 x 4.4 cm) diaphragm.
Mid/Low Freq. Drivers	Two 4" (10.2 cm) paper cone.
Recommended Amp	20–200 watts
Weight	9.5 lbs. (4.4 kg)
Size (HxWxD)	6 x 24 x 4.4" (15.2 x 61 x 11.3 cm)



The superb Folded Motion tweeter.



MARTIN LOGAN®

The Great American Speaker Company

www.martinlogan.com



Convenient push-style binding posts take the frustration out of cable connection and easily adapt to accept banana plugs (Motion 4 shown).