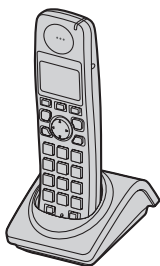


Panasonic[®]

Installation Manual

Expandable Digital Cordless Handset

Model No. **KX-TGA101**



DECT
6.0

Thank you for purchasing a Panasonic cordless telephone.

This handset is an accessory handset for use with Panasonic base units KX-TG1032/KX-TG1033/KX-TG1034/KX-TG1035. You must register this handset with your base unit before it can be used.

This installation manual describes only the steps needed to register and begin using the handset. Please read the base unit's operating instructions for further details.

Charge the batteries for 7 hours before initial use.

Please read this Installation Manual before using the unit and save for future reference.

For assistance, visit our website:

<http://www.panasonic.com/help> for customers in the U.S.A. or Puerto Rico.



TGA101

PQQX15792ZA FC0107FF0

Accessory information

Included accessories

Accessory item	Order number	Quantity
Charger	PQLV30053ZS	1
AC adaptor for charger	PQLV209V	1
Batteries	HHR-4DPA (Part No. HHR-55AAABU)	2
Handset cover* ¹	PQYNTG1032SR	1
Belt clip	PQKE10456Z2	1

*1 The handset cover comes attached to the handset.

Additional/replacement accessories

Accessory item	Order number
Rechargeable nickel metal hydride (Ni-MH) batteries	HHR-4DPA

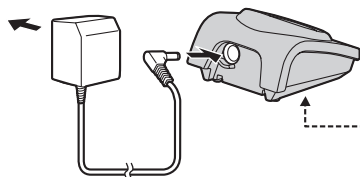
Sales and support information

- To order replacement accessories, call 1-800-332-5368.
 - TTY users (hearing or speech impaired users) can call 1-866-605-1277.
-

Setting up the handset

Connecting the charger

(120 V AC, 60 Hz)



Bottom of the charger



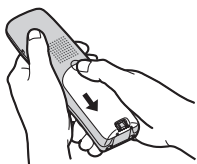
Fasten the AC adaptor cord to prevent it from being disconnected.

Note:

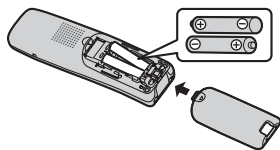
- Use only the included Panasonic AC adaptor PQLV209.
- The AC adaptor must remain connected at all times. (It is normal for the adaptor to feel warm during use.)
- The AC adaptor should be connected to a vertically oriented or floor-mounted AC outlet. Do not connect the AC adaptor to a ceiling-mounted AC outlet, as the weight of the adaptor may cause it to become disconnected.

Battery installation

- 1 Press the notch of the handset cover firmly, and slide it in the direction of the arrow.



- 2 Insert the batteries negative (⊖) end first. Close the handset cover.

**Important:**

- USE ONLY Ni-MH batteries AAA (R03) size.
- Do NOT use Alkaline/Manganese/Ni-Cd batteries.
- Install the batteries in proper order (⊕, ⊖), matching the correct polarity.

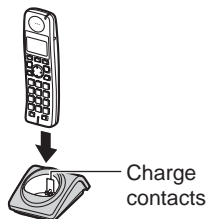
Attention:

A nickel metal hydride battery that is recyclable powers the product you have purchased.

Please call 1-800-8-BATTERY (1-800-822-8837) for information on how to recycle this battery.

Battery charge

Place the handset on the charger for **7 hours** before initial use.

**Note:**

- If you want to use the handset immediately, charge the batteries for at least 15 minutes.
- To ensure that the batteries charge properly, clean the charge contacts of the handset and charger with a soft, dry cloth once a month. Clean more often if the unit is subject to the exposure of grease, dust, or high humidity.

Panasonic battery performance

Operation	Operating time
While in use (talking)	Up to 17 hours
While not in use (standby)	Up to 7.5 days

Note:

- The handset can be left on the charger without any ill effect on the batteries.
- The battery level may not be displayed correctly or the entire display may go blank after you replace the batteries. In this case, place the handset on the charger and let charge for 7 hours.

Registration

Register the handset to a KX-TG1032/KX-TG1033/KX-TG1034/KX-TG1035 base unit.

1 Base unit:

Press and hold **[LOCATOR]** until the registration tone sounds.

- If all registered handsets start ringing, press **[LOCATOR]** to stop, then repeat this step.
- After the base unit beeps, the rest of the procedure must be completed within 1 minute and 30 seconds.

2 Handset:

Press **[OK]**, then wait until a beep sounds and **Y** stops flashing.

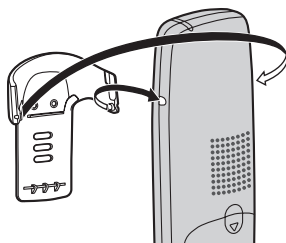
Changing the display language

- 1 **[MENU]**
- 2 **[▼]/[▲]**: "Handset settings" → **[OK]**
- 3 **[▼]/[▲]**: "Display settings" → **[OK]**
- 4 **[▼]/[▲]**: "Change language" → **[OK]**
- 5 **[▼]/[▲]**: Select the desired setting.
- 6 **[OK]** → **[OFF]**

Belt clip

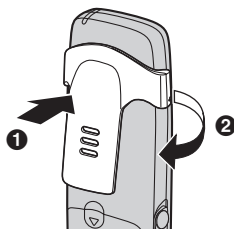
You can hang the handset on your belt or pocket using the included belt clip.

To attach the belt clip



To remove the belt clip

While pressing the top of the clip (1), pull the right edge in the direction of the arrow (2).



Headset (optional)

Connecting a headset to the handset allows hands-free phone conversations. We recommend using a Panasonic KX-TCA60/KX-TCA86/KX-TCA88HA/KX-TCA92/KX-TCA93/KX-TCA94/KX-TCA95 headset. See page 2 for ordering information.



- Headset shown is KX-TCA86.

Specifications

■ Standard:

DECT 6.0 (Digital Enhanced Cordless Telecommunications 6.0)

■ Number of channels:

60 Duplex Channels

■ Frequency range:

1.92 GHz to 1.93 GHz

■ Duplex procedure:

TDMA (Time Division Multiple Access)

■ Channel spacing:

1,728 kHz

■ Bit rate:

1,152 kbit/s

■ Modulation:

GFSK (Gaussian Frequency Shift Keying)

■ RF transmission power:

Approx. 100 mW

■ Voice coding:

ADPCM 32 kbit/s

■ Power source:

120 V AC, 60 Hz

■ Power consumption:

Charger:

Standby: Approx. 0.7 W

Maximum: Approx. 3.5 W

■ Operating conditions:

5 °C – 40 °C (41 °F – 104 °F), 20 % – 80 % relative air humidity (dry)

■ Dimensions:

Handset: Approx. 169 mm × 49 mm × 35 mm

(6 ²¹/₃₂ inches × 1 ¹⁵/₁₆ inches × 1 ³/₈ inches)

Charger: Approx. 51 mm × 81 mm × 91 mm

(2 inches × 3 ³/₁₆ inches × 3 ¹⁹/₃₂ inches)

■ Mass (weight):

Handset: Approx. 140 g (0.31 lb.)

Charger: Approx. 70 g (0.15 lb.)

Note:

- Design and specifications are subject to change without notice.
- The illustrations in these instructions may vary slightly from the actual product.

FCC and other information

This equipment is hearing aid compatible as defined by the FCC in 47 CFR Section 68.316.

When you hold the phone to your ear, noise might be heard in your Hearing Aid. Some Hearing Aids are not adequately shielded from external RF (radio frequency) energy. If noise occurs, use an optional headset accessory or the speakerphone option (if applicable) when using this phone. Consult with your audiologist or Hearing Aid manufacturer about the availability of Hearing Aids which provide adequate shielding to RF energy commonly emitted by digital devices.

WHEN PROGRAMMING EMERGENCY NUMBERS AND/OR MAKING TEST CALLS TO EMERGENCY NUMBERS:

- 1) Remain on the line and briefly explain to the dispatcher the reason for the call.
- 2) Perform such activities in the off-peak hours, such as early morning or late evenings.

This device complies with Part 15 of the FCC Rules. Operation is subject to the following two conditions:

(1) This device may not cause harmful interference, and (2) this device must accept any interference received, including interference that may cause undesired operation.

Privacy of communications may not be ensured when using this phone.

CAUTION:

Any changes or modifications not expressly approved by the party responsible for compliance could void the user's authority to operate this device.

NOTE:

This equipment has been tested and found to comply with the limits for a Class B digital device, pursuant to Part 15 of the FCC Rules. These limits are designed to provide reasonable protection against harmful interference in a residential installation. This equipment generates, uses, and can radiate radio frequency energy and, if not installed and used in accordance with the instructions, may cause harmful interference to radio communications. However, there is no guarantee that interference will not occur in a particular installation. If this equipment does cause harmful interference to radio or television reception, which can be determined by turning the equipment off and on, the user is encouraged to try to correct the interference by one or more of the following measures:

- Reorient or relocate the receiving antenna.
- Increase the separation between the equipment and receiver.
- Connect the equipment into an outlet on a circuit different from that to which the receiver is connected.
- Consult the dealer or an experienced radio/TV technician for help.

FCC RF Exposure Warning:

- This product complies with FCC radiation exposure limits set forth for an uncontrolled environment.
- This handset may not be collocated or operated in conjunction with any other antenna or transmitter.
- The handset may be carried and operated with only the specific provided belt-clip. Other non-tested belt-clips or similar body-worn accessories may not comply and must be avoided.

CAUTION:

Installation

- Operating the product near electrical appliances may cause interference. Move away from the electrical appliances.
- The AC adaptor is used as the main disconnect device. Ensure that the AC outlet is installed near the product and is easily accessible.

Battery

To reduce the risk of fire or injury to persons, read and follow these instructions.

- Use only the battery(ies) specified.
- Do not mix old and new batteries.
- Do not dispose of the battery(ies) in a fire. They may explode. Check with local waste management codes for special disposal instructions.
- Do not open or mutilate the battery(ies). Released electrolyte is corrosive and may cause burns or injury to the eyes or skin. The electrolyte may be toxic if swallowed.
- Exercise care when handling the battery(ies). Do not allow conductive materials such as rings, bracelets or keys to touch the battery(ies), otherwise a short circuit may cause the battery(ies) and/or the conductive material to overheat and cause burns.
- Charge the battery(ies) provided, or identified for use with the product only, in accordance with the instructions and limitations specified in this manual.

WARNING:

- To prevent the risk of fire or electrical shock, do not expose the product to rain or any type of moisture.
- Unplug the product from power outlets if it emits smoke, an abnormal smell, or makes an unusual noise. These conditions can cause fire or electric shock. Confirm that smoke

has stopped emitting and contact the Panasonic Call Center at 1-800-211-PANA (1-800-211-7262).

- Do not place or use this product near automatically controlled devices such as automatic doors and fire alarms. Radio waves emitted from this product may cause such devices to malfunction resulting in an accident.
- Completely insert the AC adaptor/power plug into the power outlet. Failure to do so may cause electric shock and/or excessive heat resulting in a fire.
- Regularly remove any dust, etc. from the AC adaptor/power plug by pulling it from the power outlet, then wiping with a dry cloth. Accumulated dust may cause an insulation defect from moisture, etc. resulting in a fire.

Notice

- This product is designed for use in the United States of America. Sale or use of this product in other countries may violate local laws.
- Cet appareil est conçu pour être utilisé aux États-Unis d'Amérique. La vente ou l'emploi de cet appareil dans certains autres pays peut constituer une infraction à la législation locale.
- Este producto está diseñado para usarse en los Estados Unidos de América. La venta o el empleo de este producto en ciertos países puede constituir violación de la legislación local.
- 本產品專為美國使用而設。若在其他國家銷售或使用，可能會違反當地法例。
- この製品は、日本国外での使用を目的として設計されており、日本国内での使用は法律違反となります。従って、当社では日本国内においては原則として修理などのサービスは致しかねます。

Customer services

Customer Services Directory

Obtain Product Information and Operating Assistance; locate your nearest Dealer or Service Center; purchase Parts and Accessories; or make Customer Service and Literature requests by visiting our Web Site at:

<http://www.panasonic.com/help>

or, contact us via the web at:

<http://www.panasonic.com/contactinfo>

You may also contact us directly at: 1-800-211-PANA (1-800-211-7262),
Monday - Friday 9 am to 9 pm; Saturday - Sunday 10 am to 7 pm, EST.

TTY users (hearing or speech impaired users) can call 1-877-833-8855.

Accessory Purchases

Purchase Parts, Accessories and Instruction Books online for all Panasonic Products by visiting our Web Site at:

<http://www.pasc.panasonic.com>

or, send your request by E-mail to:

npcparts@us.panasonic.com

You may also contact us directly at:

1-800-332-5368 (Phone) 1-800-237-9080 (Fax Only)

(Monday - Friday 9 am to 9 pm, EST.)

Panasonic Service and Technology Company

20421 84th Avenue South, Kent, WA 98032

(We Accept Visa, MasterCard, Discover Card, American Express, and
Personal Checks.)

TTY users (hearing or speech impaired users) can call 1-866-605-1277.

Service in Puerto Rico

Panasonic Puerto Rico, Inc.

San Gabriel Industrial Park, Ave. 65 de Infantería, Km. 9.5,

Carolina, Puerto Rico 00985

Phone (787)750-4300, Fax (787)768-2910

Warranty

PANASONIC CONSUMER
ELECTRONICS COMPANY, DIVISION
OF PANASONIC CORPORATION OF
NORTH AMERICA
One Panasonic Way,
Secaucus, New Jersey 07094

PANASONIC PUERTO RICO, INC.
San Gabriel Industrial Park,
Ave. 65 de Infantería, Km. 9.5,
Carolina, Puerto Rico 00985

Panasonic Telephone Products Limited Warranty

Limited Warranty Coverage

If your product does not work properly because of a defect in materials or workmanship, Panasonic Consumer Electronics Company or Panasonic Puerto Rico, Inc. (collectively referred to as "the warrantor") will, for the length of the period indicated on the chart below, which starts with the date of original purchase ("Limited Warranty period"), at its option either (a) repair your product with new or refurbished parts, or (b) replace it with a new or a refurbished product. The decision to repair or replace will be made by the warrantor.



Parts	Labor
One (1) Year	One (1) Year

During the "Labor" Limited Warranty period there will be no charge for labor. During the "Parts" Limited Warranty period, there will be no charge for parts. You must mail-in your product prepaid during the Limited Warranty period. This Limited Warranty excludes both parts and labor for batteries, antennas, and cosmetic parts (cabinet). This Limited Warranty only applies to products purchased and serviced in the United States or Puerto Rico. This Limited Warranty is extended only to the original purchaser and only covers products purchased as new.

Mail-In Service

For assistance in the continental U.S.A. in obtaining repairs please ship the product prepaid to:

**Panasonic Service and Technology Company Customer Service Center
4900 George McVay Drive Suite B Door #12 McAllen, TX 78503**

For assistance in Puerto Rico call Panasonic Puerto Rico, Inc. (787)-750-4300 or fax (787)-768-2910.

For Limited Warranty service for headsets if a headset is included with this product please call Panasonic at 1-800-332-5368.

When shipping the unit carefully pack, include all accessories, and send it prepaid, adequately insured and preferably in the original carton. Include a letter detailing the complaint, a return address and provide a day time phone number where you can be reached.

IF REPAIR IS NEEDED DURING THE LIMITED WARRANTY PERIOD THE PURCHASER WILL BE REQUIRED TO FURNISH A SALES RECEIPT/PROOF OF PURCHASE INDICATING DATE OF PURCHASE, AMOUNT PAID AND PLACE OF PURCHASE. CUSTOMER WILL BE CHARGED FOR THE REPAIR OF ANY UNIT RECEIVED WITHOUT SUCH PROOF OF PURCHASE.

Limited Warranty Limits And Exclusions

This Limited Warranty ONLY COVERS failures due to defects in materials or workmanship, and DOES NOT COVER normal wear and tear or cosmetic damage. The Limited Warranty ALSO DOES NOT COVER damages which occurred in shipment, or failures which are caused by products not supplied by the warrantor, or failures which result from accidents, misuse, abuse, neglect, bug infestation, mishandling, misapplication, alteration, faulty installation, set-up adjustments, misadjustment of consumer controls, improper maintenance, power line surge, lightning damage, modification, introduction of sand, humidity or liquids, commercial use such as hotel, office, restaurant, or other business or rental use of the product, or service by anyone other than a Factory Service Center or other Authorized Servicer, or damage that is attributable to acts of God.

THERE ARE NO EXPRESS WARRANTIES EXCEPT AS LISTED UNDER "LIMITED WARRANTY COVERAGE". THE WARRANTOR IS NOT LIABLE FOR INCIDENTAL OR CONSEQUENTIAL DAMAGES RESULTING FROM THE USE OF THIS PRODUCT, OR ARISING OUT OF ANY BREACH OF THIS LIMITED WARRANTY. (As examples, this excludes damages for lost time, lost calls or messages, cost of having someone remove or re-install an installed unit if applicable, travel to and from the servicer. The items listed are not exclusive, but are for illustration only.) **ALL EXPRESS AND IMPLIED WARRANTIES, INCLUDING THE WARRANTY OF MERCHANTABILITY, ARE LIMITED TO THE PERIOD OF THE LIMITED WARRANTY.**

Some states do not allow the exclusion or limitation of incidental or consequential damages, or limitations on how long an implied warranty lasts, so the exclusions may not apply to you.

This Limited Warranty gives you specific legal rights and you may also have other rights which vary from state to state. If a problem with this product develops during or after the Limited Warranty period, you may contact your dealer or Service Center. If the problem is not handled to your satisfaction, then write to the warrantor's Consumer Affairs Department at the addresses listed for the warrantor.

PARTS AND SERVICE, WHICH ARE NOT COVERED BY THIS LIMITED WARRANTY, ARE YOUR RESPONSIBILITY.

If you need assistance with setup or operation

- 1** Visit our website: <http://www.panasonic.com/help>
- 2** Contact us via the web at: <http://www.panasonic.com/contactinfo>
- 3** Call us at: 1-800-211-PANA (1-800-211-7262)
TTY users (hearing or speech impaired users) can call 1-877-833-8855.

When you ship the product

- Carefully pack your unit, preferably in the original carton.
- Attach a letter, detailing the symptom, to the outside of the carton.
- Send the unit to Panasonic Service and Technology Company Customer Service Center, prepaid and adequately insured.
- Do not send your unit to Panasonic Consumer Electronics Company listed below or to executive or regional sales offices. These locations do not repair consumer products.

**Panasonic Consumer Electronics Company,
Division of Panasonic Corporation of North America**
One Panasonic Way, Secaucus, New Jersey 07094

Panasonic Puerto Rico, Inc.
San Gabriel Industrial Park, Ave. 65 de Infantería, Km. 9.5,
Carolina, Puerto Rico 00985

Copyright:

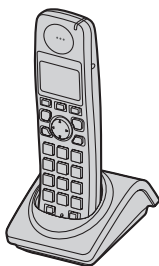
This material is copyrighted by Panasonic Communications Co., Ltd., and may be reproduced for internal use only. All other reproduction, in whole or in part, is prohibited without the written consent of Panasonic Communications Co., Ltd.
© 2007 Panasonic Communications Co., Ltd. All Rights Reserved.

Panasonic®

Manual de instalación

Teléfono Inalámbrico Digital Expandible

Modelo N°. **KX-TGA101**



DECT
6.0

Gracias por adquirir un teléfono inalámbrico Panasonic.

Este auricular es un accesorio para usarse con las siguientes unidades base de Panasonic: KX-TG1032/KX-TG1033/KX-TG1034/KX-TG1035. Debe registrar el auricular con su unidad base antes de poder usarlo.

El manual de instalación sólo describe los pasos necesarios para registrar y comenzar a usar el auricular. Lea las instrucciones de operación de la unidad base para obtener mayores detalles.

Cargue la batería durante 7 horas antes de utilizarla por primera vez.

Lea este manual de instalación antes de usar la unidad y guárdelo para consultarlo en el futuro.

Para obtener ayuda, visite nuestro sitio web:

<http://www.panasonic.com/help> para clientes de Estados Unidos o Puerto Rico.

Información de los accesorios

Accesorios incluidos

Accesorio	Número de pedido	Cantidad
Cargador	PQLV30053ZS	1
Adaptador para corriente para el cargador	PQLV209V	1
Baterías	HHR-4DPA (N° de serie HHR-55AAABU)	2
Tapa del auricular*1	PQYNTG1032SR	1
Presilla para el cinturón	PQKE10456Z2	1

*1 La cubierta del auricular viene unida a él.

Accesorios adicionales y de reemplazo

Accesorio	Número de pedido
Batería recargable níquel metal hídrica (Ni-MH)	HHR-4DPA

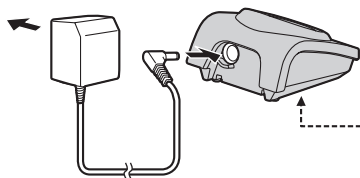
Información de ventas y respaldo

- Para pedir accesorios de repuesto, llame al 1-800-332-5368.
- Los usuarios TTY (usuarios con impedimentos auditivos o del habla) pueden llamar al 1-866-605-1277.

Configuración del auricular

Conexión del cargador

(120 V CA, 60 Hz)



Parte inferior del cargador



Fije bien el cable del adaptador de CA para que no se desconecte.

Nota:

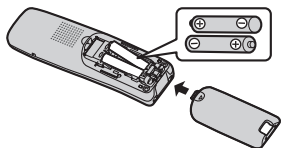
- Use sólo el adaptador para corriente Panasonic PQLV209 incluido.
- El adaptador para corriente debe permanecer conectado todo el tiempo. (Es normal que el adaptador se caliente durante su uso.)
- El adaptador debe estar conectado a un enchufe de corriente orientado verticalmente o en una toma de corriente alterna montada en el piso. No conecte el adaptador a una toma de corriente montada en el techo, ya que el peso del adaptador puede hacer que se desconecte.

Instalación de la batería

- 1 Pulse la ranura de la tapa de la unidad portátil y deslícela en la dirección de la flecha.



- 2 Coloque primero la parte negativa (⊖). Cierre la tapa de la unidad portátil.



Importante:

- UTILICE SÓLO baterías de Ni-MH tamaño AAA (R03).
- NO utilice baterías Alcalinas, de Manganeseo o de Ni-Cd.
- Instale las baterías siguiendo el orden (⊕, ⊖) y la polaridad correctos.

Carga de la batería

Coloque el auricular en el cargador durante **7 horas** antes de usarlo por primera vez.



Nota:

- Si desea utilizar el auricular de inmediato, cargue las baterías durante un mínimo de 15 minutos.
- Para asegurarse de que las baterías se carguen correctamente, limpie los contactos de carga del auricular y el cargador con un paño suave y seco una vez al mes. Límpielos con mayor frecuencia si la unidad está sujeta a grasa, polvo o un alto nivel de humedad.

Rendimiento de la batería Panasonic

Operación	Tiempo de funcionamiento
Mientras esté en uso (hablando)	Hasta 17 horas
Mientras no esté en uso (en espera)	Hasta 7,5 días

Nota:

- El auricular se puede dejar en el cargador sin que esto dañe las baterías.
- Es posible que el nivel de las baterías no se muestre correctamente después de que las reemplace. En este caso, coloque el auricular en el cargador y permita que se cargue durante 7 horas.

Registro

Registre el auricular en una unidad base de cualquiera de los siguientes modelos:

KX-TG1032/KX-TG1033/KX-TG1034/KX-TG1035.

1 Unidad base:

Pulse y mantenga pulsado **[LOCATOR]** hasta que suene el tono de registro.

- Si suenan todas las unidades portátiles registradas, pulse **[LOCATOR]** para detenerlas y repita este paso.
- Después de que el indicador IN USE (en uso) comience a parpadear, debe completar el resto del procedimiento en menos de 1 minuto y 30 segundos.

2 Auricular:

Pulse **[OK]**, y después espere a que se emita un pitido y ∇ deje de parpadear.

Para cambiar el idioma de la pantalla

1 [MENU]

2 **[v]/[^]**: "Handset settings" → **[OK]**

3 **[v]/[^]**: "Display settings" → **[OK]**

4 **[v]/[^]**: "Change language" → **[OK]**

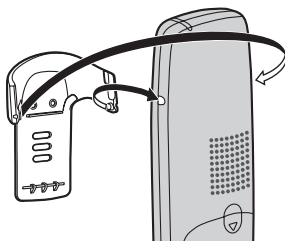
5 **[v]/[^]**: Seleccione la configuración deseada.

6 **[OK]** → **[OFF]**

Presilla para el cinturón

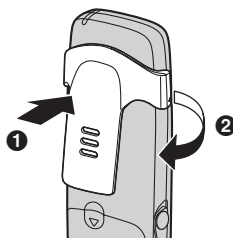
La unidad portátil se puede colgar en el cinturón o en el bolsillo por medio de la presilla para el cinturón suministrada.

Para poner la presilla para el cinturón



Para quitar la presilla para el cinturón

A la vez que presiona la parte superior de la presilla (1), tire del borde derecho en dirección de la flecha (2).



Audífono (opcional)

La conexión de un audífono al auricular permite tener conversaciones a manos libres. Recomendamos que utilice sólo un audífono Panasonic de los siguientes modelos: KX-TCA60/KX-TCA86/KX-TCA88HA/KX-TCA92/KX-TCA93/KX-TCA94/KX-TCA95. Consulte la página 2 para obtener información sobre pedidos.



- El audífono que se muestra es el KX-TCA86.

Especificaciones

■ Estándar:

DECT 6.0 (Digital Enhanced Cordless Telecommunications 6.0: telecomunicaciones inalámbricas mejoradas digitalmente),

■ Número de canales:

60 Canales dúplex

■ Banda de frecuencia:

1,92 GHz a 1,93 GHz

■ Procedimiento dúplex:

TDMA (Time Division Multiple Access: acceso múltiple por distribución en el tiempo)

■ Espaciado de canales:

1.728 kHz

■ Tasa de bits:

1.152 kbit/s

■ Modulación:

GFSK (Gaussian Frequency Shift Keying: modulación por desplazamiento gaussiano de frecuencia)

■ Transmisión de energía RF:

100 mW aprox.

■ Codificación de voz:

ADPCM 32 kbit/s

■ Fuente de alimentación:

120 V CA, 60 Hz

■ Consumo de energía:

Cargador:

En espera: Aprox. 0,7 W

Máximo: Aprox. 3,5 W

■ Condiciones de funcionamiento:

5 °C a 40 °C (41 °F a 104 °F), 20 % a 80 % de humedad relativa del aire (seco)

■ Dimensiones:

Auricular: Aprox. 169 mm de alto × 49 mm de ancho × 35 mm de profundidad (6 ²¹/₃₂ pulgadas × 1 ¹⁵/₁₆ pulgadas × 1 ³/₈ pulgadas)

Cargador: Aprox. 51 mm de alto × 81 mm de ancho × 91 mm de profundidad (2 pulgadas × 3 ³/₁₆ pulgadas × 3 ¹⁹/₃₂ pulgadas)

■ Peso:

Auricular: Aprox. 140 g (0,31 lbs.)

Cargador: Aprox. 70 g (0,15 lbs.)

Nota:

- El diseño y las especificaciones están sujetos a cambio sin previo aviso.
- Las ilustraciones de estas instrucciones pueden ser ligeramente diferentes al producto.