



SHARP

SHARP®

TABLE OF CONTENTS

Introduction 3

Design Ideas.....4-13

Microwave Drawer Under the Counter 4

Microwave Oven in Wall Cabinets 5

Range Flexibility 6

6-in-1 Cooking Center 7

Wet Bar Ready to Warm 8

Corner Applications 9

Retrofit for Over the Counter 10

Blank Wall OTC it... 11

Stand Alone 12

Universal Design 13

References.....14-19

Drawer Installation 14

Range Installation 15

Built-in Kit Chart 16

Built-in Kit Frames 17

Over the Range Installation Guide 18

Over the Counter Installation Guide 19

Assistance Back Cover

INTRODUCTION



Every kitchen needs a microwave — but where should it go? With such an assortment of microwave ovens to choose from, which best suits your needs? Whether you are designing a kitchen in a new home, remodeling an older kitchen or simply replacing a current microwave, this guide will help you choose the best microwave for your kitchen design — and help you install it properly.

Sharp is a leader in developing innovative solutions for microwave placement. Options include Over the Counter, Over the Range, built-in or countertop models. Now Sharp introduces the most innovative answer yet for where to put the microwave — the world's first Microwave Drawer.

MICROWAVE DRAWER™ – Sharp's new Microwave Drawer takes the microwave off the counter and places it right at the most convenient height, making stirring food easier and safer. The angled front-mounted touch controls and superb accessibility make it ideal for people who use their microwave frequently. Most importantly, the 30-inch drawer design provides a sleek, integrated look so that the microwave oven blends in — wherever it goes.

INSIGHT™ RANGE – This new 3-in-1 cooking center combines a glass ceramic cooktop, conventional or convection oven, and Sharp's exclusive Microwave Drawer in a single space-saving appliance. It's ideal for smaller kitchens, islands or modern open-plan designs that offer lots of open space but few wall cabinets. By incorporating the microwave within the 30-inch range itself, awkward installations and cluttered countertops are eliminated while allowing the use of a stylish ventilation hood above the range. Both freestanding and slide-in models are available.

OVER THE COUNTER™ "OTC" – Designers often look for ways to place the microwave oven in the cabinets above the counter. In the past, the only options have been to use a shelf in a wall cabinet or to build the microwave into a custom cabinet. Sharp's OTC™ microwaves provide a built-in-ready solution designed for standard 24-inch cabinets. Each OTC is equipped with an under-the-cabinet light that acts as a decorative accent light, functional task light, or serviceable nightlight. An optional Accessory Kit is available with two stainless steel accessory bars and eight "S" hooks, ideal for essential cooking tools.

OVER THE RANGE "OTR" – Locating a microwave oven over a range or cooktop provides the additional functions of hood ventilation and task lighting. Sharp's OTRs offer the option of venting to the outside vertically or horizontally, or recirculating when outside venting is not available. Sharp offers the largest capacity OTR in the industry, as well as a convection microwave OTR that's the perfect second oven.

BUILT-IN KITS FOR MICROWAVE OVENS – Often kitchen designers and appliance users look for an alternative location other than the countertop in order to save space, provide greater functionality or for a more integrated look. Sharp offers an assortment of UL-approved kits that allow you to build many of our larger countertop models into a cabinet or wall location. Kits are available in a number of color and material options. They provide proper air circulation when the microwave oven is built into a closed location. Please refer to each individual model's operation manual (available at www.sharppusa.com) for installation recommendations.

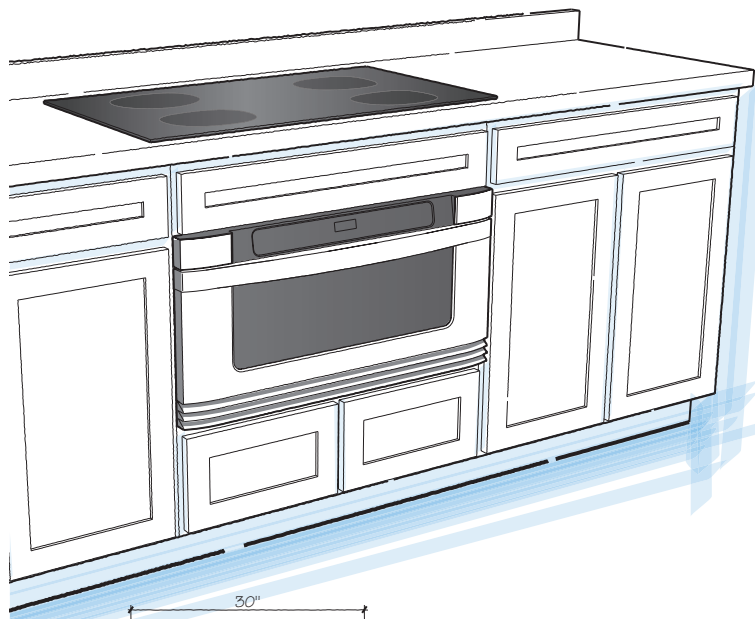
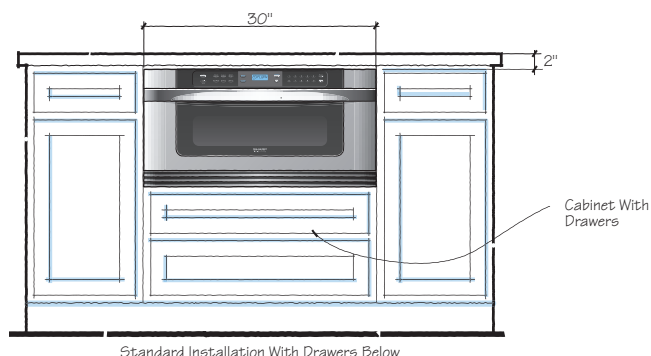
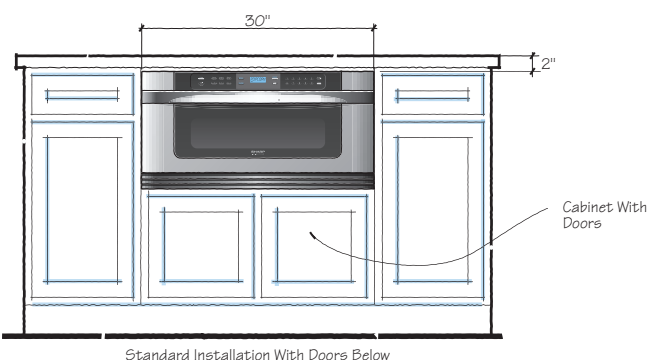
COUNTERTOP – Sharp offers a range of microwave ovens from compacts (0.8 cu. ft.) to full size (2.0 cu. ft.) with wattage up to 1200 watts. An assortment of features, including one-touch sensor cooking, is available. Please refer to each model for specific features and installation options.

MICROWAVE DRAWER *Under the Counter...*

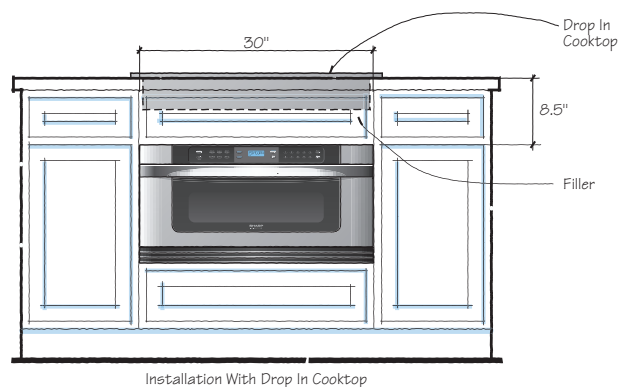
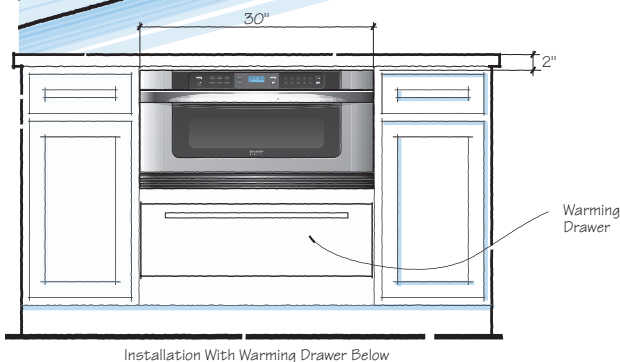


KB-6015KS

Introducing Sharp's newest innovation: the Insight Pro™ Microwave Drawer. It installs easily under a counter, cooktop or wall oven eliminating awkward installations and cluttered countertops. It frees the space above the cooktop or range for a stylish or powerful ventilation hood.



The Microwave Drawer places the microwave at the most convenient height for superb user access. The angled top-mounted controls are easy to see and easy to reach. Microwave cooking is simpler and safer for every cook in the family, with no need to remove the dish from the oven to check, stir or turn the food. For even greater convenience, the Microwave Drawer opens with the touch of a button.



MICROWAVES in Wall Cabinets...



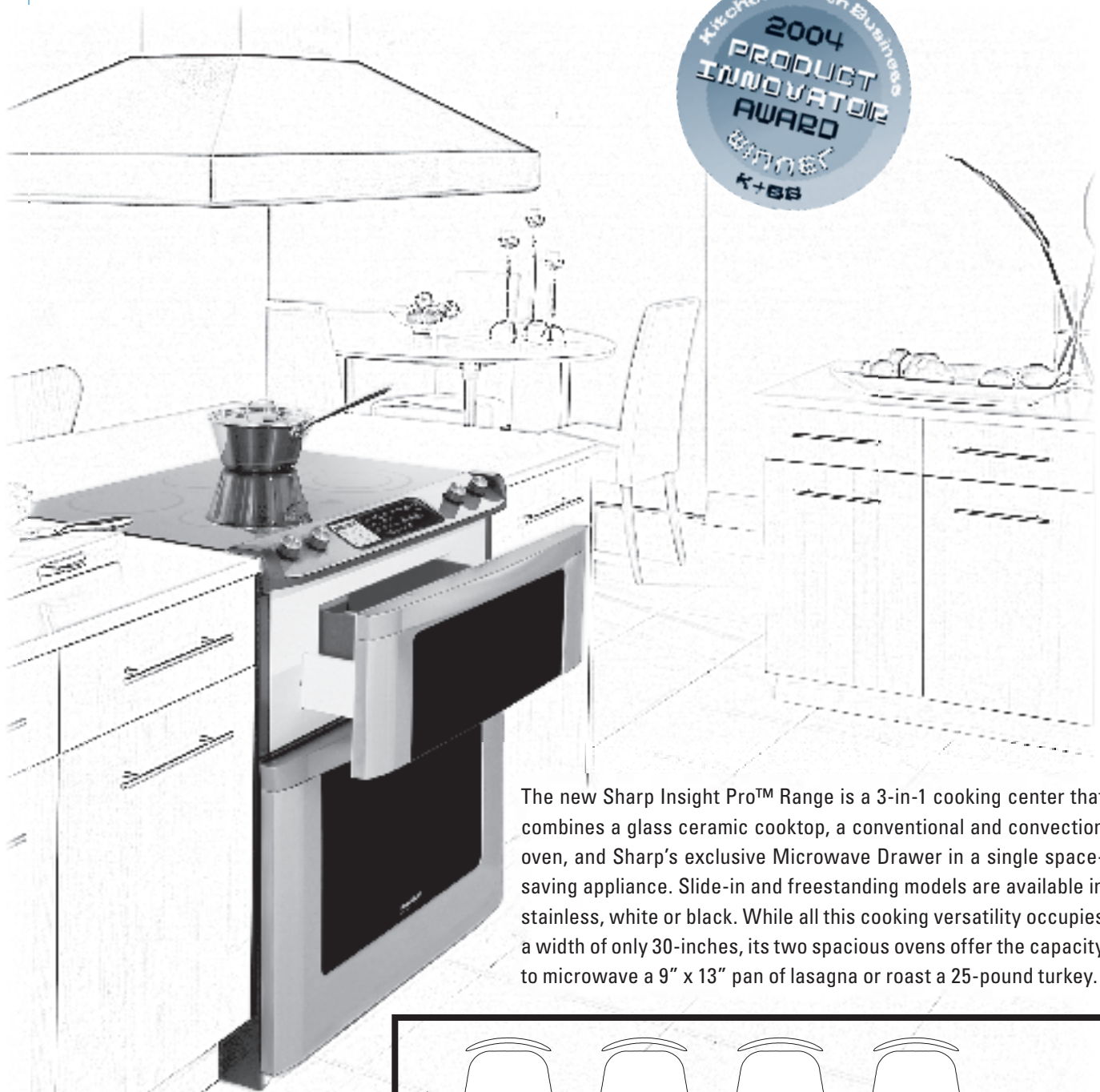
Wall Oven/
Microwave Drawer/
Warming Drawer



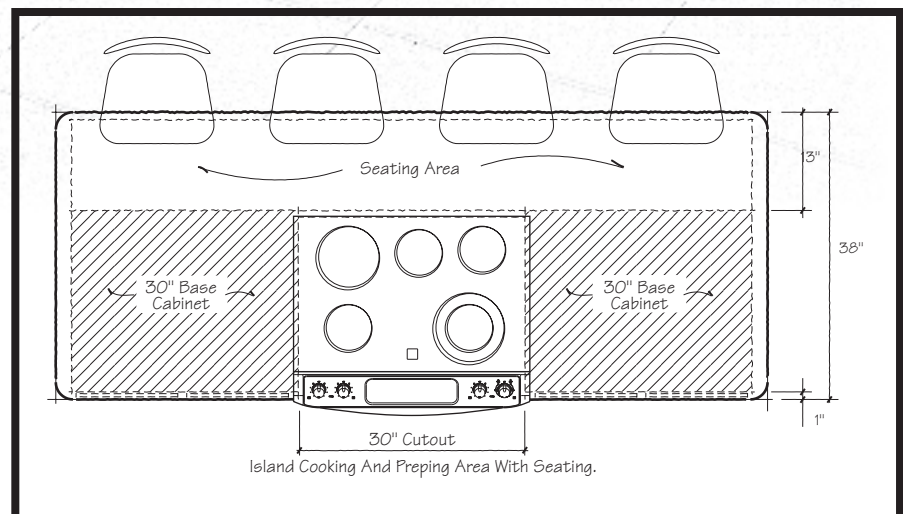
High Speed Oven/
Microwave Drawer

The Sharp Microwave Drawer is the most innovative idea yet for where to put the microwave. It's ideal for open-plan kitchens, islands or for kitchens with few wall-hung cabinets. The Microwave Drawer is built-in ready for easy installation with no additional kit required. Use it under a conventional wall oven or below the Sharp High Speed Oven, model R-90GC. You can even build-in a warming drawer beneath the Microwave Drawer.

Check specific Installation Instructions packed with the KB-6015KS/KW/KK for details about building in the Microwave Drawer adjacent to a wall oven, cooktop or warming drawer.

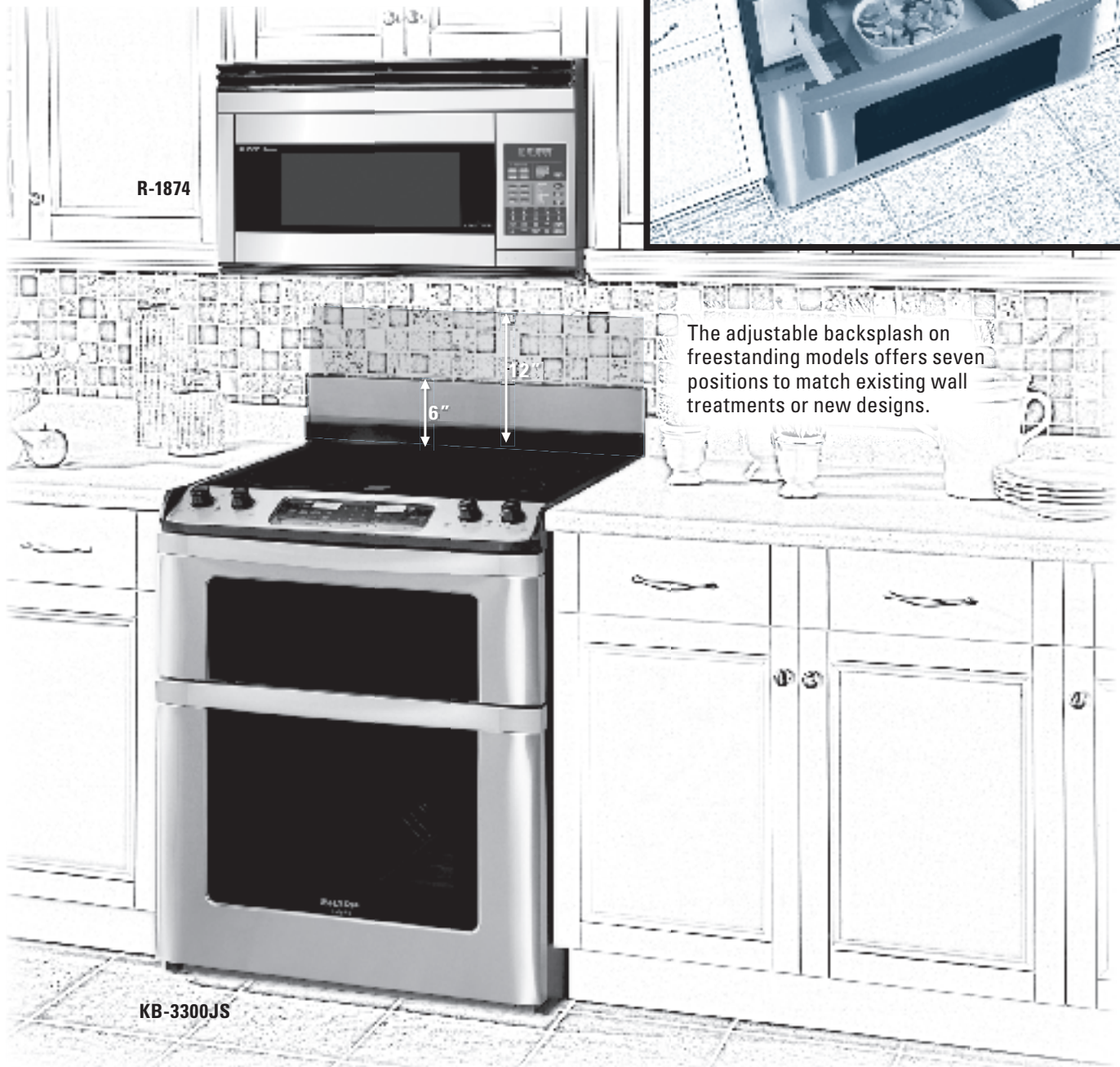
RANGE Flexibility...**Model KB-4425**

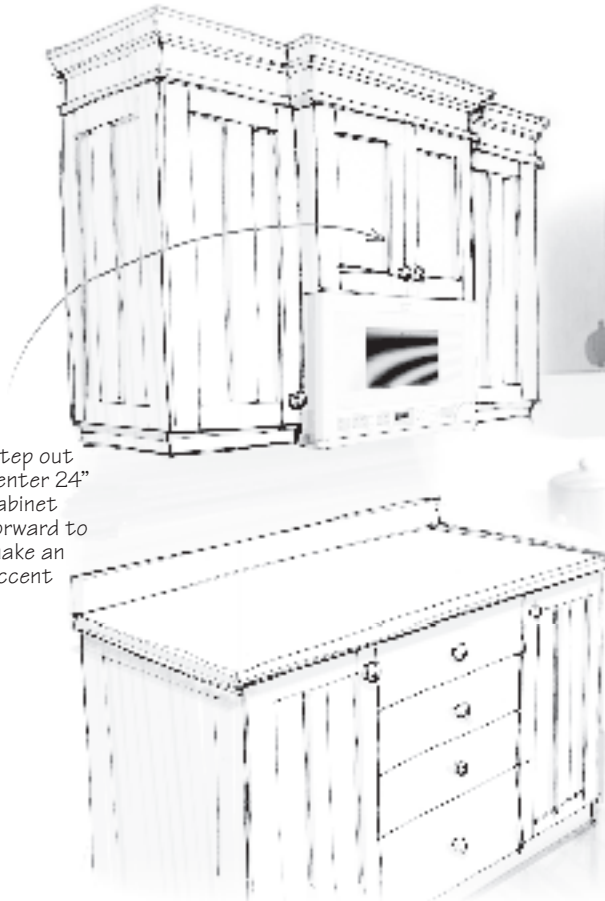
The new Sharp Insight Pro™ Range is a 3-in-1 cooking center that combines a glass ceramic cooktop, a conventional and convection oven, and Sharp's exclusive Microwave Drawer in a single space-saving appliance. Slide-in and freestanding models are available in stainless, white or black. While all this cooking versatility occupies a width of only 30-inches, its two spacious ovens offer the capacity to microwave a 9" x 13" pan of lasagna or roast a 25-pound turkey.



6-in-1 Cooking Center...

By adding a Sharp Convection Microwave Over the Range above the Insight Range, you have a 6-in-1 cooking center: two ovens, two microwaves, a cooktop and a ventilation hood. This type of design eliminates steps between appliances, creating a high efficient kitchen traffic pattern. The range's front mounted controls and superb microwave accessibility make it safe and convenient for every cook in the kitchen.



WET BAR Ready to Warm...

Step out
center 24"
cabinet
forward to
make an
accent

NEW DESIGNS FOR NEW LOCATIONS!

Sharp's Over the Counter Microwave Oven opens new design options for the kitchen designer. This space saving location offers accent and task lighting with Auto-Touch controls on the door at easy-to-read eye level.



R-1210



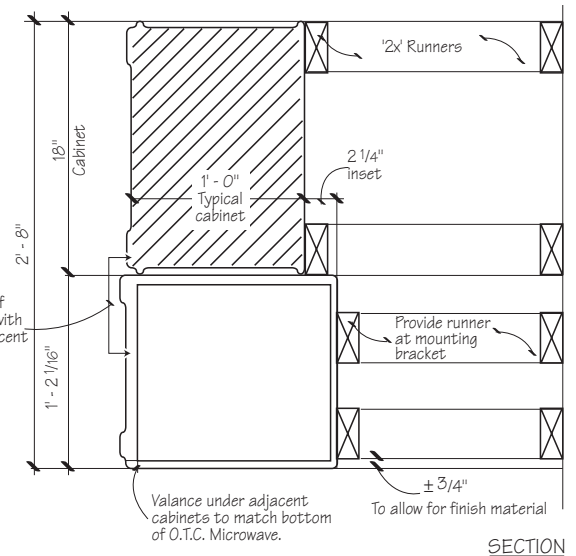
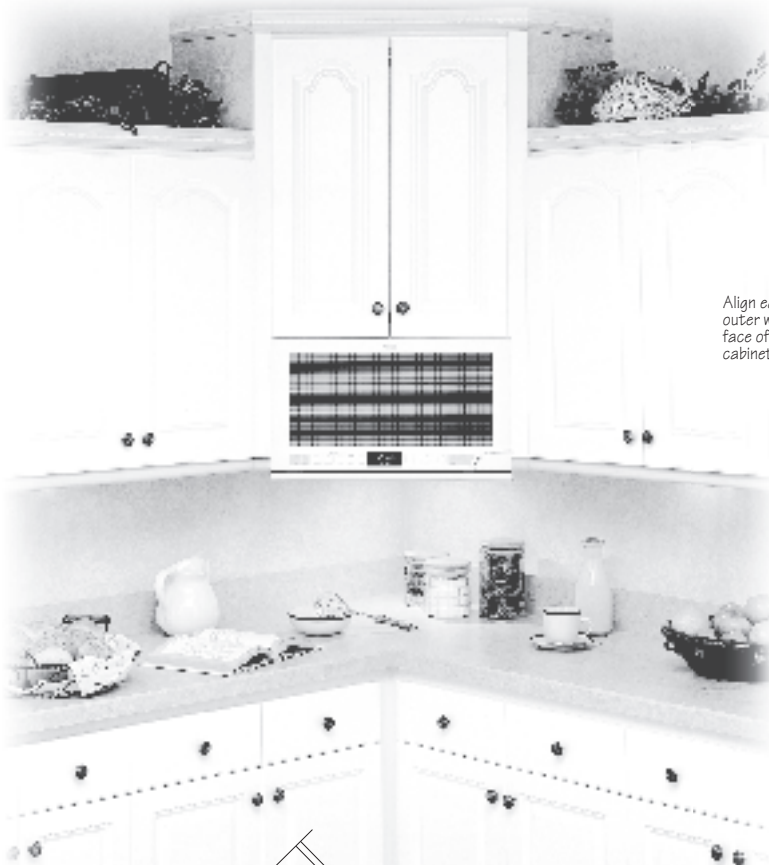
The arrangements shown above illustrate the OTC positioned in standard wall cabinets located over the counter in a wet bar. The microwave is always ready so you can enjoy your favorite snacks with a little wine and cheese.

FOOD Preparation...

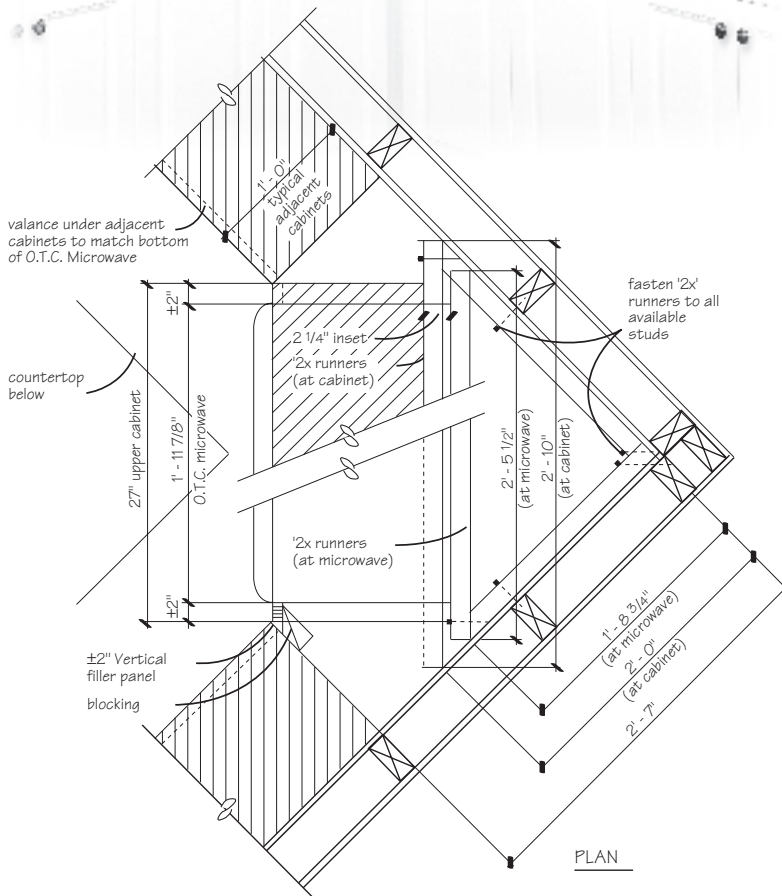
The arrangement shown to the right illustrates the new OTC located in standard wall cabinets over the counter. This creates a perfect cook station and preparation area.



CORNER Applications...



The arrangement shown illustrates the OTC located in a corner using standard 27-inch wall cabinets and custom trim wall mounting.

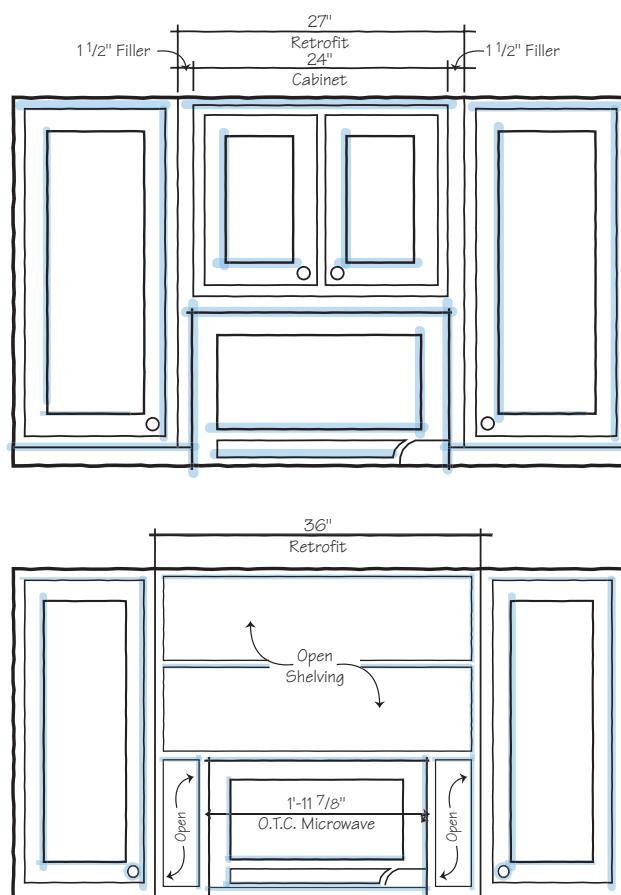
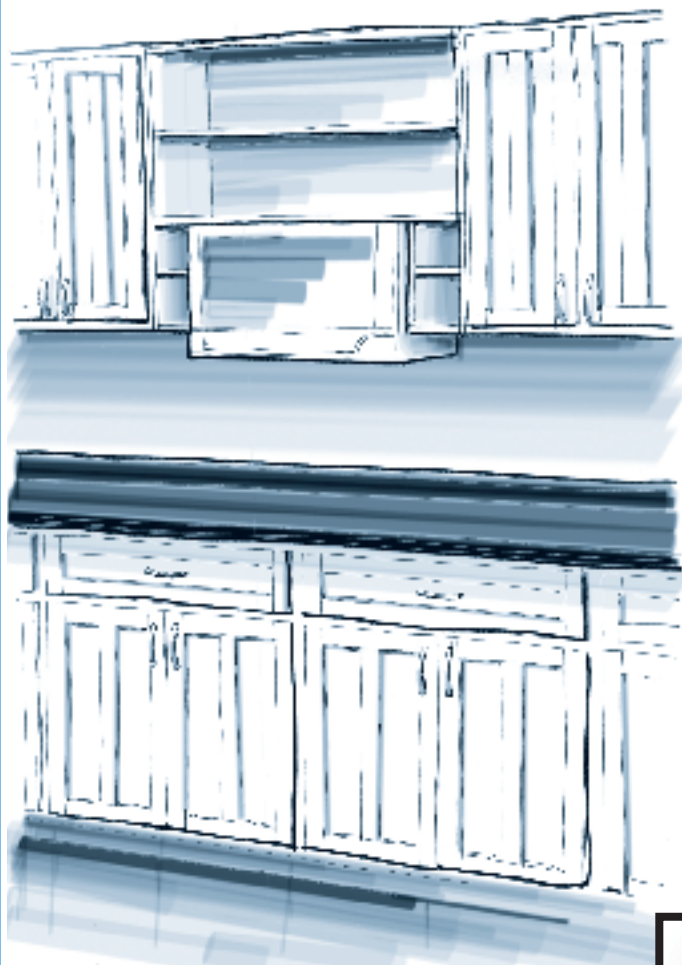


Sharp OTC microwave ovens offer an optional accessory kit with two stainless steel accessory bars and eight "S" hooks.

RETROFIT...

for Over the Counter

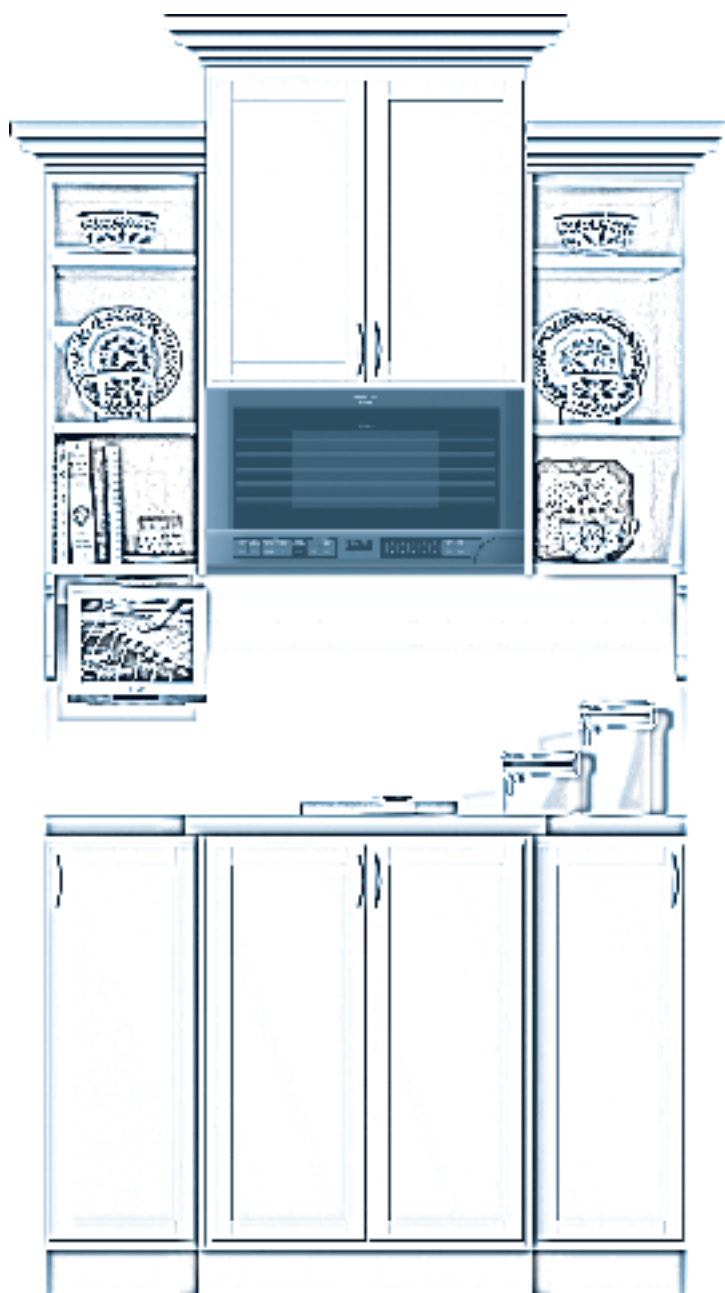
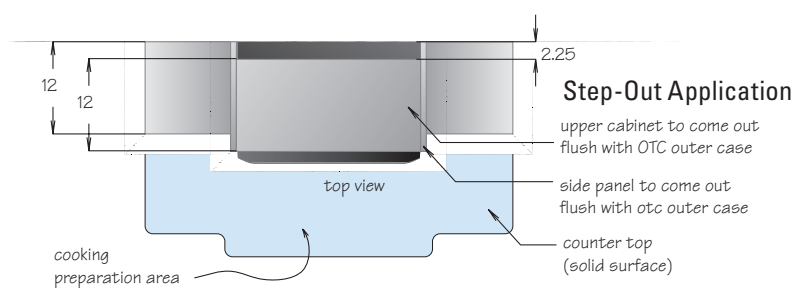
Want an OTC microwave but don't want to remodel your entire kitchen? Retrofit the OTC into your current cabinets. Pull out any wall cabinet over 24 inches wide, mount the OTC on the wall and trim it out with a number of optional ideas as illustrated.

**DESIGN Tip...**

Add a two inch valance to the bottom of the cabinets to line up with the bottom of the OTC.



BLANK WALL *OTC* it...

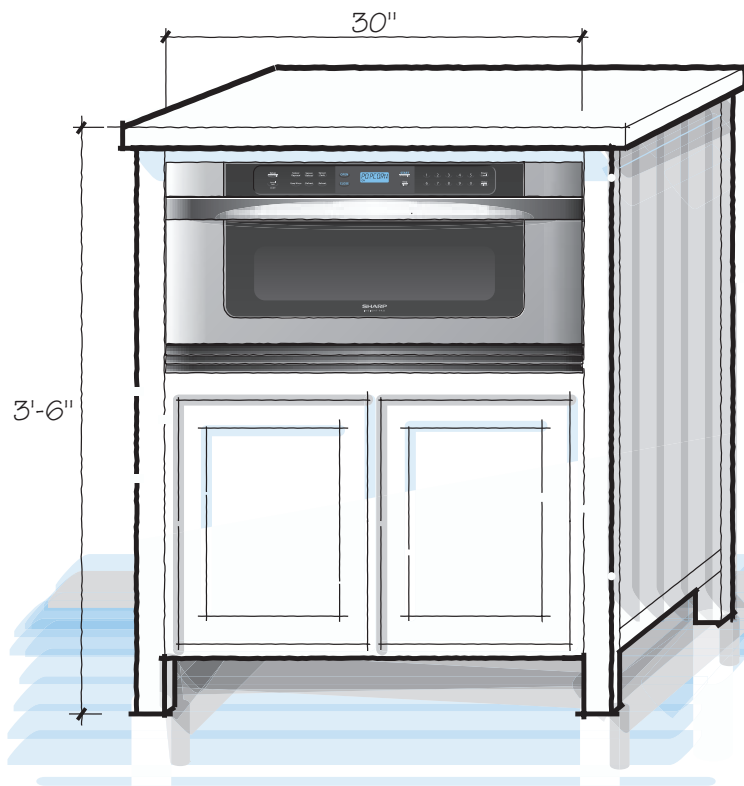


Step-up Application

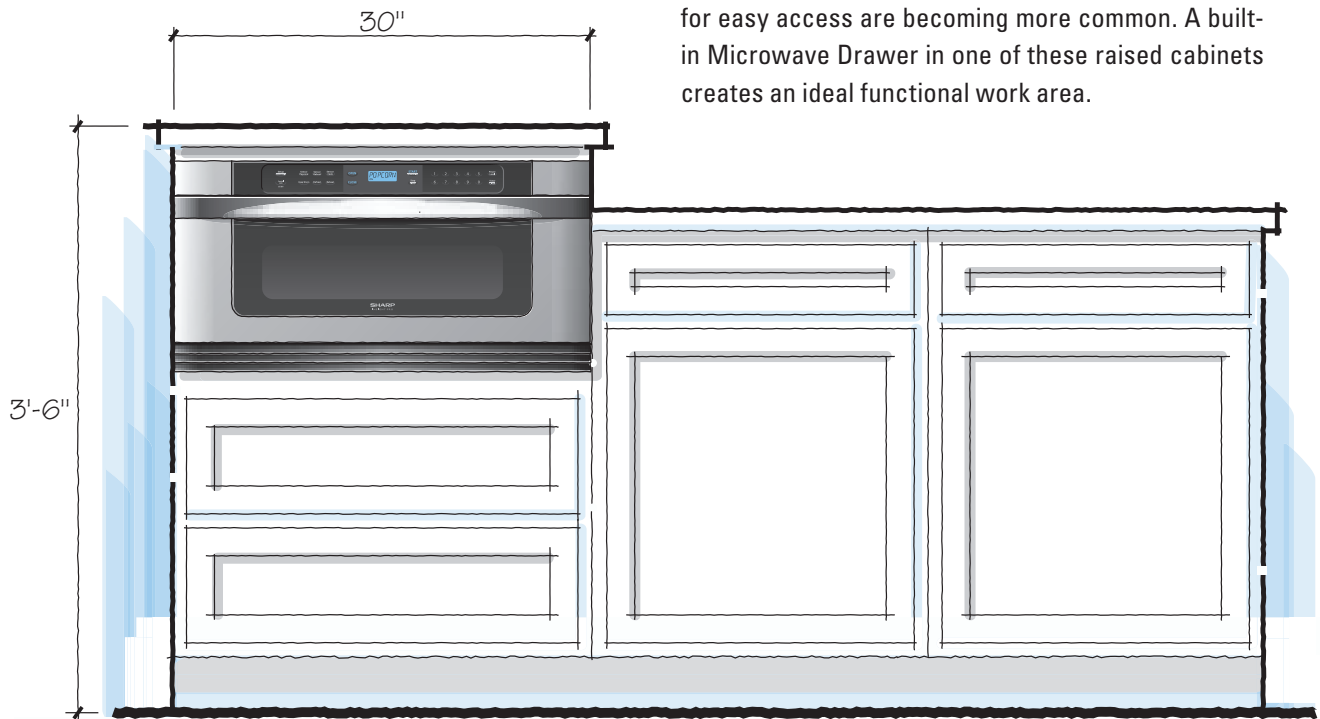
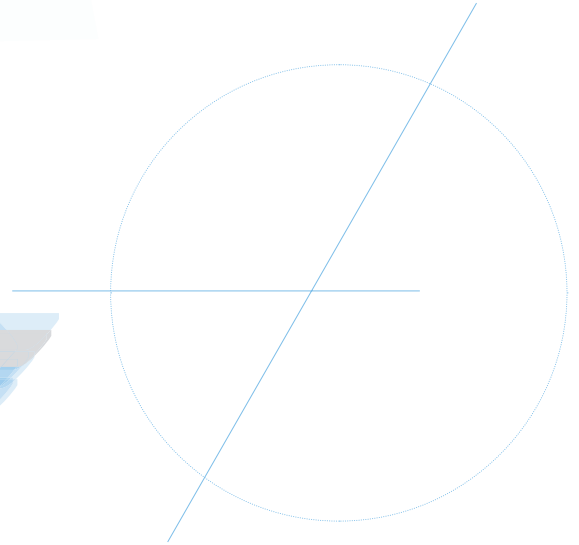


Simple Application

Turn a blank wall into functional space. Simply mount an OTC microwave with a small cabinet above and place some finished panels on the side. Below, place a conventional cabinet or use a kitchen cart for a unique application and lighted work area.

STAND Alone...

The trend is toward using freestanding furniture in the kitchen that includes built-in appliances. Free up your imagination and design a piece of furniture with a built-in Sharp Microwave Drawer in your next project.



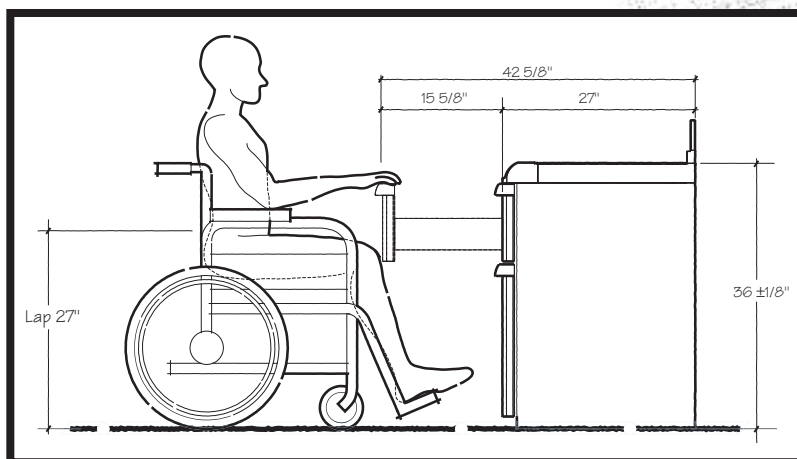
Cabinet manufacturers now offer many optional arrangements. Raised cabinets that elevate appliances for easy access are becoming more common. A built-in Microwave Drawer in one of these raised cabinets creates an ideal functional work area.

UNIVERSAL Design...

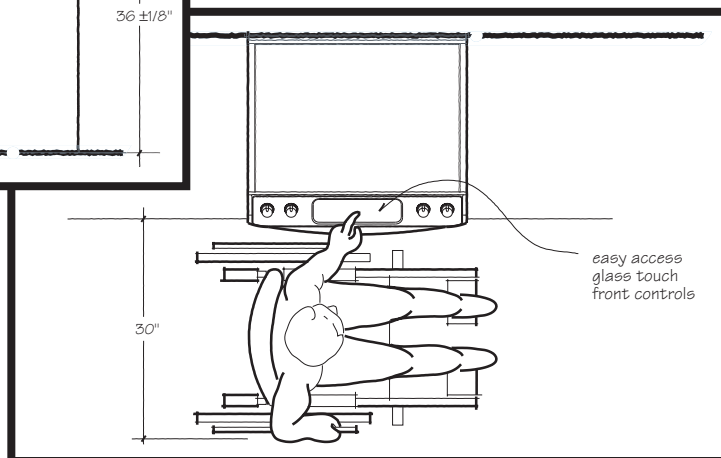
Universal access — providing a safe and convenient location for users — should be an important design consideration in all kitchens. Located within the universal reach range of 15-inches to 48-inches, the Sharp Microwave Drawer provides easy and safe access to foods, requiring less bending and providing a convenient landing space. The universal reach range was established by the American National Standards Institute and is used as the universal access guideline for accessible reach.

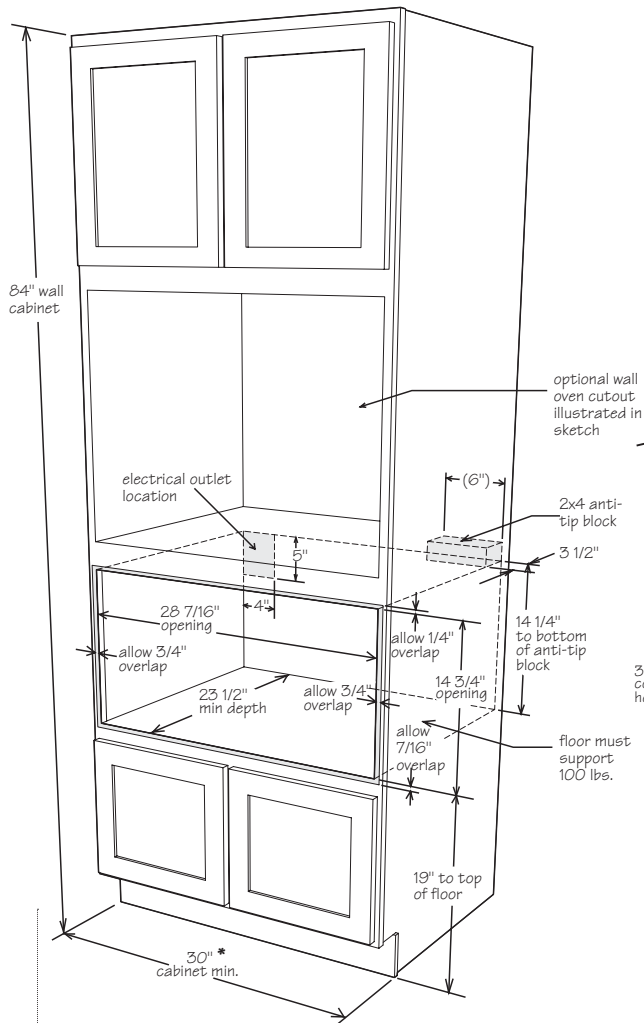


The drawer location with its easy viewing of food and controls is more convenient for most cooks than other below the counter location options.

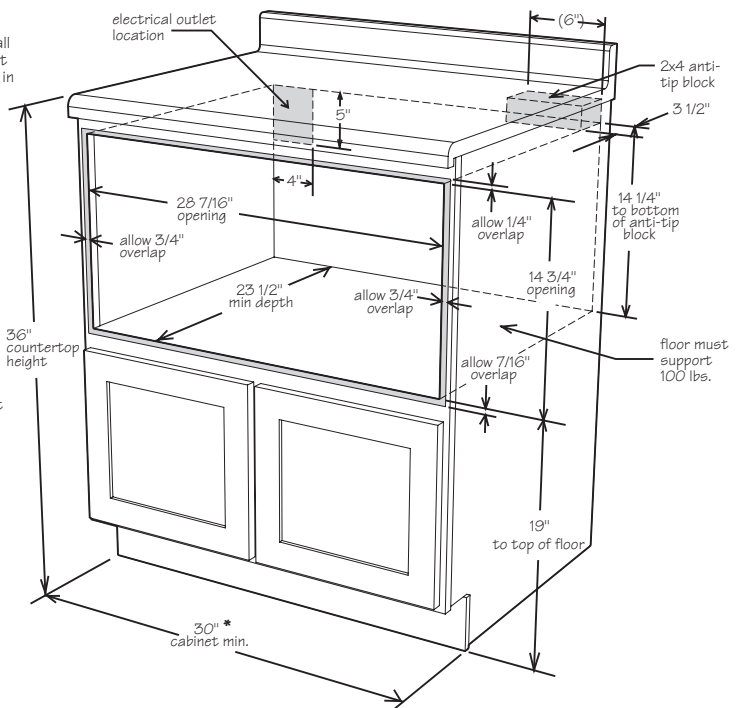


The Microwave Drawer can be accessed from a wheelchair. Auto-Touch controls are easy to see and to reach. The drawer opens automatically by simply touching a button (on most models). The location and operation of the Microwave Drawer are ideally suited for special needs.



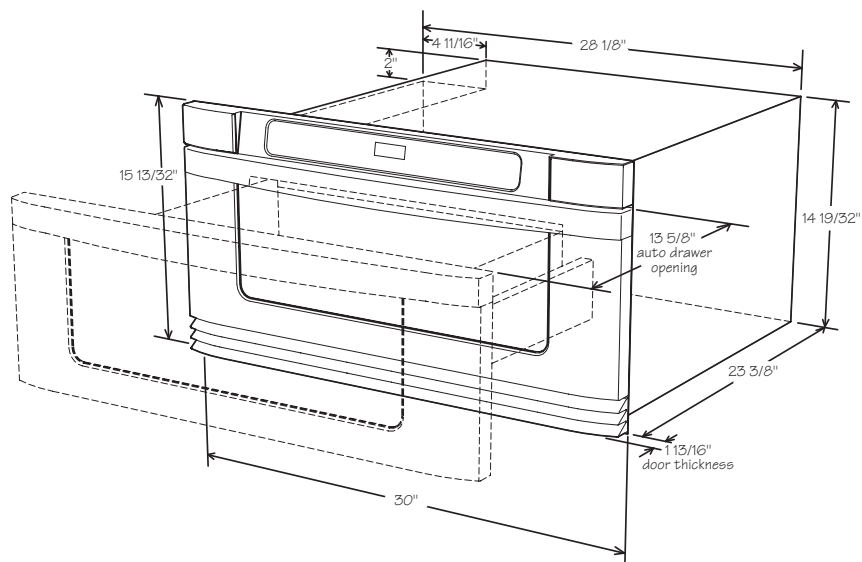
DRAWER Installation...

The separate Microwave Drawer can be installed below a conventional wall oven following the illustration to the left. The floor of the opening should be constructed of plywood strong enough to support the weight of the oven (about 100 pounds). Locate electrical outlet in the shaded area in the upper left-hand corner of the cutout.



* Refer to cabinet manufacturer for compatible interior dimensions.

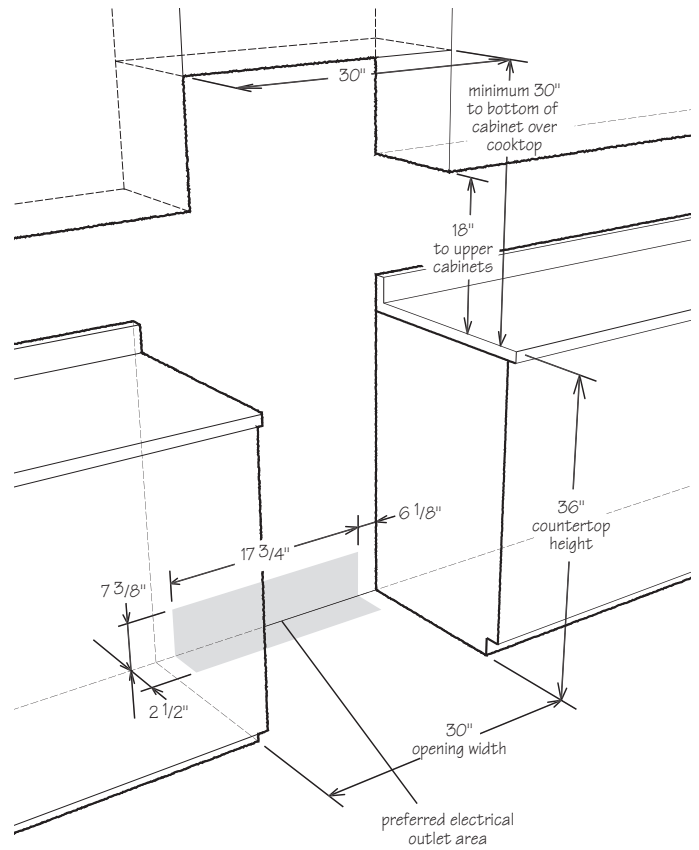
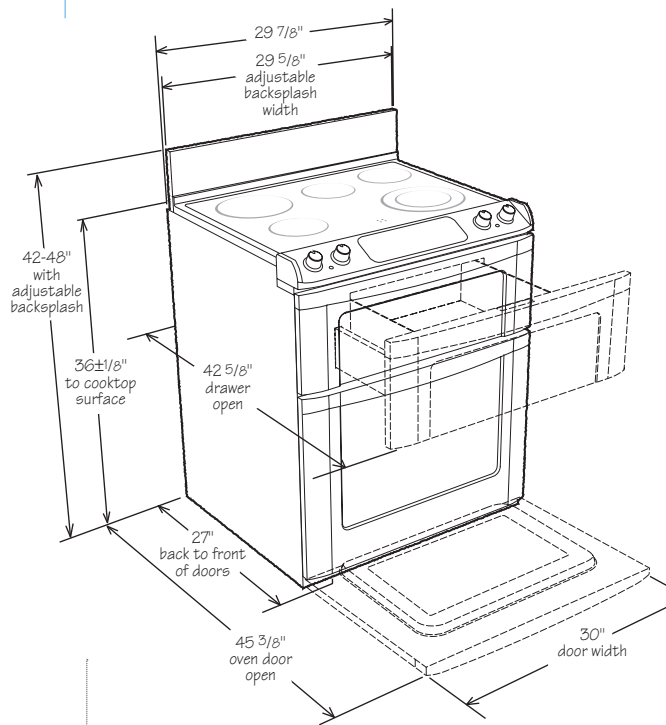
The 30-inch wide Microwave Drawer is completely built-in ready. It requires no additional trim kit or venting — just an electrical outlet in the designated shaded area. The microwave interior will easily accommodate a 9" x 13" oblong dish or a bag of microwave popcorn.



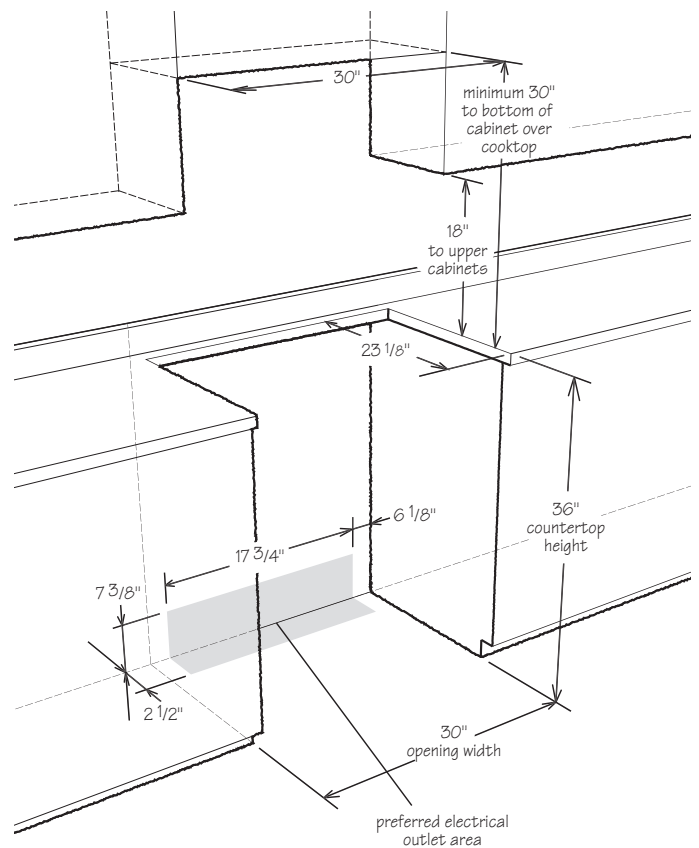
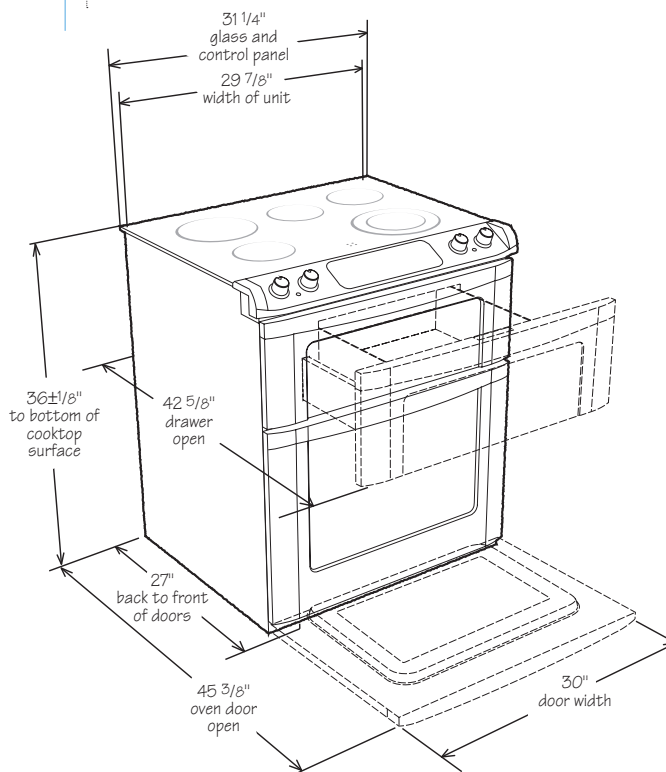
Check specific Installation Instructions packed with the KB-6015KS/KW/KK for details about building in the Microwave Drawer adjacent to a wall oven, cooktop or warming drawer.

RANGE Installation...

KB-3300, KB-3411 and KB-3425



KB-4425

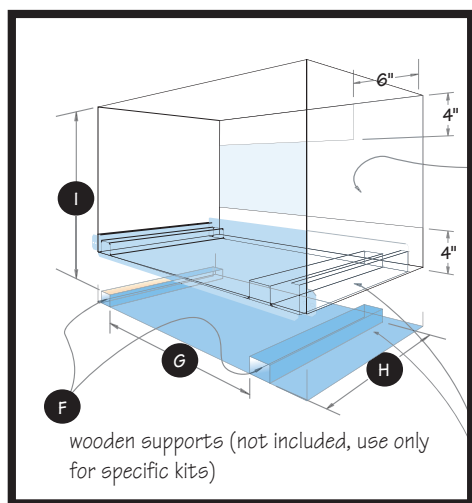


BUILT-IN KIT Chart...

Your Sharp Microwave Oven can be built into your kitchen wall or cabinet using the appropriate Sharp Built-in Kit. Complete hardware and easy-to-follow instructions are included. Prepare cabinet or wall opening according to the illustration below, providing access to a separate 3-prong, 120V AC outlet, 15 amps or larger. Check specific model electrical requirements.

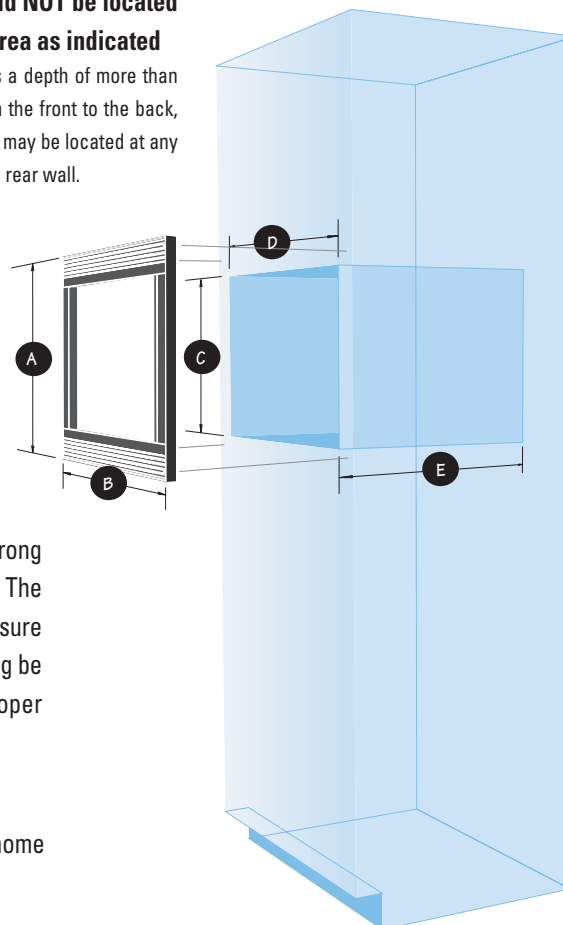
WIDTH	KITS	A	B	C	D	E	F	G	H	I
24"	RK-46K24/RK-46W24	17 1/8"	23 1/2"	15 13/16" ± 1/8"	22 3/16" ± 1/8"	min. 20 3/8"	not used	—	—	—
	RK-46S24	17 1/8"	23 1/2"	15 13/16" ± 1/8"	22 3/16" ± 1/8"	min. 20 3/8"	not used	—	—	—
	RK-42S24	17 1/8"	23 1/2"	15 13/16" ± 1/8"	22 3/16" ± 1/8"	min. 19 1/4"	not used	—	—	—
	RK-6S24/RK-6K24	19 7/8"	23 1/2"	18 3/16" ± 1/8"	22 3/16" ± 1/8"	min. 21 1/16"	nominal 2"x2" actual: 1 9/16" x 1 9/16"	14 1/16" ± 1/8"	16 1/2"	16 1/2"
27"	RK-51K/RK-51W	18 1/8"	26 7/8"	16 7/8" ± 1/8"	24 1/2" ± 3/16"	min. 20"	not used	—	—	—
	RK-51S27	18 1/8"	26 11/16"	16 7/8" ± 1/8"	24 1/2" ± 3/16"	min. 20"	not used	—	—	—
	RK-66A/66WB	19 7/8"	26 7/8"	17 7/8" (+ht. of wood)	25 1/4" ± 1/8"	min. 19 1/2"	nominal 2"x2" actual: 1 9/16" x 1 9/16"	18 3/8" ± 1/8"	15"	17 1/8"
	RK-93S27	20 1/8"	26 7/8"	17 7/8" (+ht. of wood)	25 1/4" ± 1/8"	min. 19 1/2"	nominal 2"x2" actual: 1 9/16" x 1 9/16"	18 3/8" ± 1/8"	15 5/8"	17 1/8"
30"	RK-90S27	21 1/4"	26 7/8"	20 1/8" ± 1/8"	25 5/8" ± 1/8"	min. 22 3/4"	steel risers actual: 1 11/16" x 7 9/16"	11 7/8" ± 1/8"	22 3/4"	20 1/8" ± 1/8"
	RK-51S/51K/51W30	18 1/8"	29 11/16"	16 7/8" ± 1/8"	24 1/2" ± 3/16"	min. 20"	not used	—	—	—
	RK-93S30	20 1/8"	29 7/8"	17 7/8" (+ht. of wood)	28 1/4" ± 1/8"	min. 20 1/8"	nominal 2"x2" actual: 1 9/16" x 1 9/16"	18 3/8" ± 1/8"	15 5/8"	17 1/8"
	RK-90S30	21 1/4"	29 7/8"	20 1/8" ± 1/8"	28 5/8" ± 1/8"	min. 22 3/4"	steel risers actual: 1 11/16" x 7 9/16"	11 7/8" ± 1/8"	22 3/4"	20 1/8" ± 1/8"

K= Black W= White S= Stainless steel



Outlet should NOT be located in shaded area as indicated

unless there is a depth of more than 21-inches from the front to the back, then the outlet may be located at any location on the rear wall.



The floor of the opening should be constructed of plywood strong enough to support the weight of the oven (about 100 pounds). The floor should be level for proper operation of the microwave. Be sure to check the local building code as it may require that the opening be enclosed with sides, ceiling and rear partition. The proper functioning of the microwave does not require the enclosure.

The following countertop microwave models offer one year in-home service when built-in using the applicable Sharp Built-in Kit:

R-930AK/AW/CS R-530ES/EK/EW R-426HS

BUILT-IN KIT *Frames...*

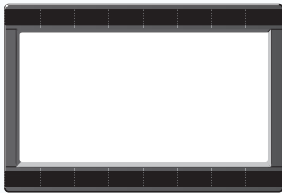
24"



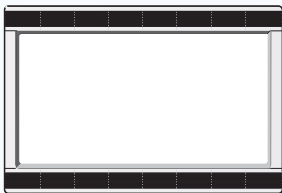
RK-42S24 • Stainless steel look



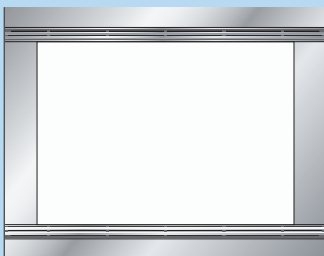
RK-46S24 • Stainless steel look



RK-46K24 • Black Plastic

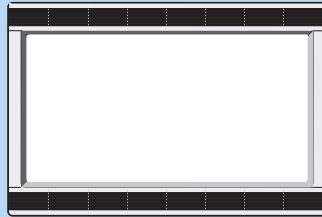


RK-46W24 • White Plastic



RK-90S27 • Stainless steel look

27"



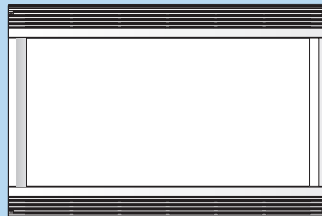
RK-51W • White plastic



RK-66A • Black metal



RK-51S27 • Stainless steel look



RK-66WB • White metal

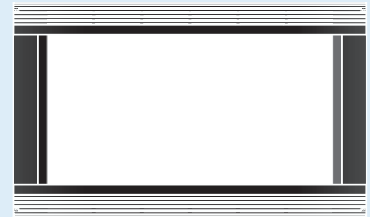


RK-51K • Black plastic



RK-93S27 • Stainless steel look

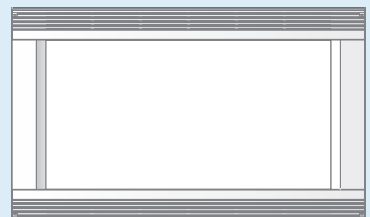
30"



RK-51K30 • Black metal



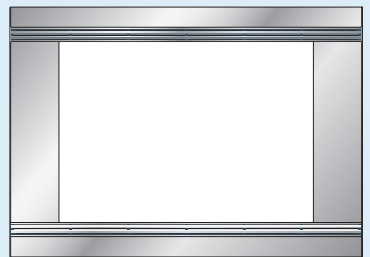
RK-93S30 • Stainless steel look



RK-51W30 • White metal



RK-51S30 • Stainless steel look



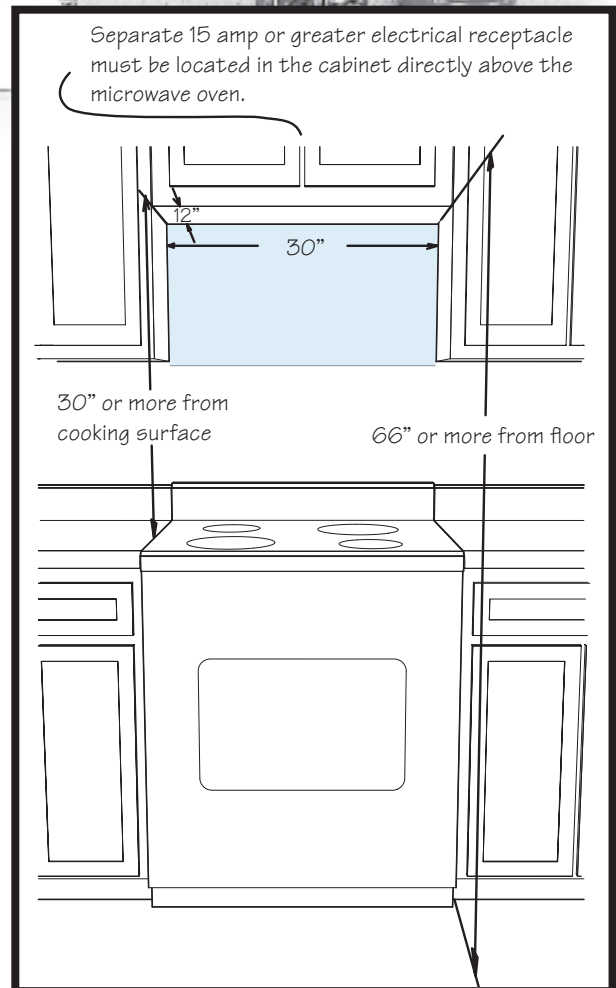
RK90S30 • Stainless steel look

K=Black W=White S=Stainless steel

OTR Installation Guide...**Over the Range**

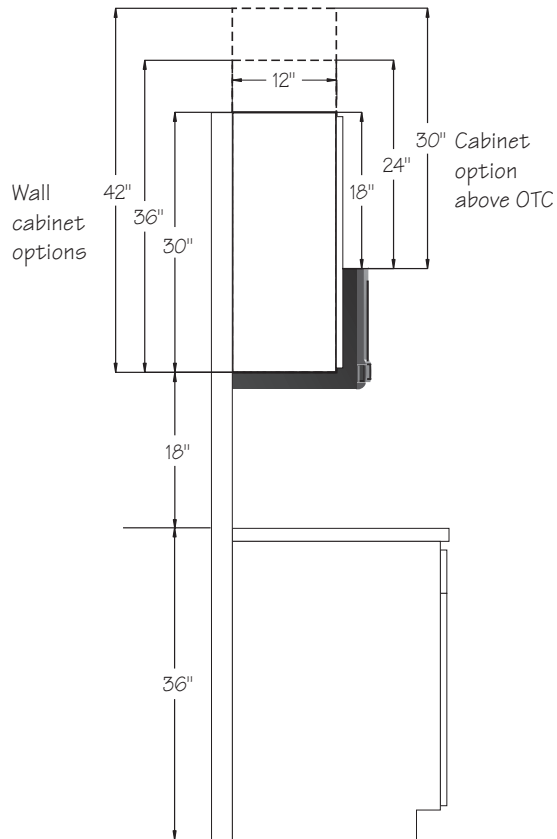
Each Sharp Over the Range microwave oven can be easily adapted for either outside ventilation (vertical or horizontal) or for non-vented, ductless recirculation.

Make sure the top of the oven is at least 66" from the floor and at least 30" from the cooking surface. A separate 15 amp or greater electrical receptacle must be located in the cabinet directly above the microwave oven.

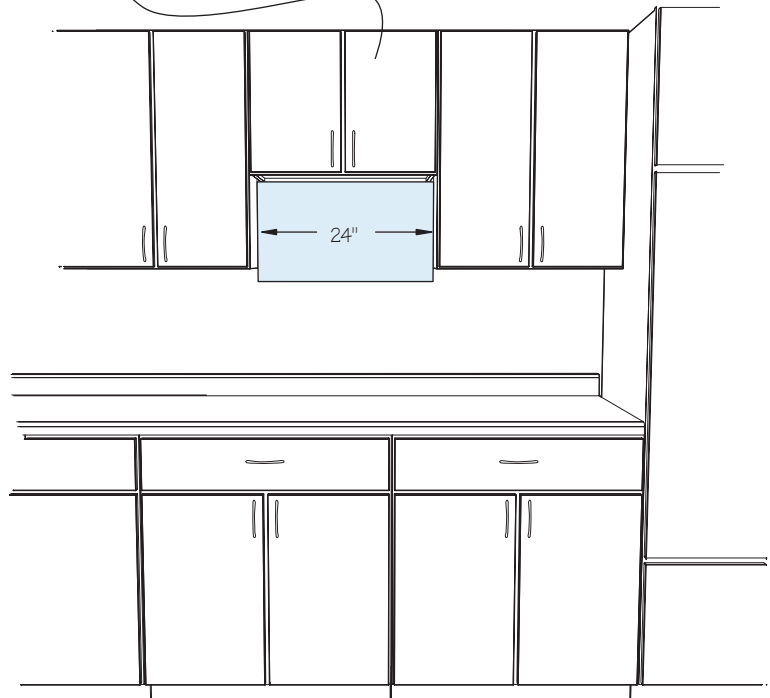


OTC Installation Guide...

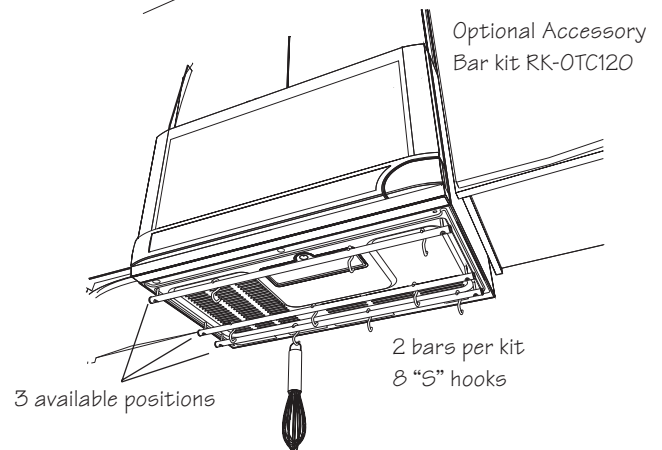
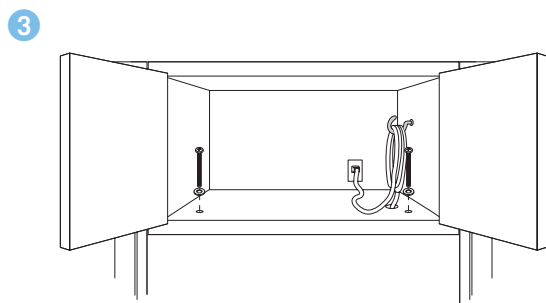
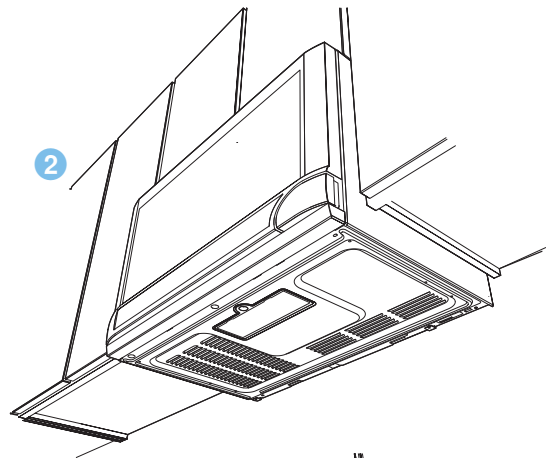
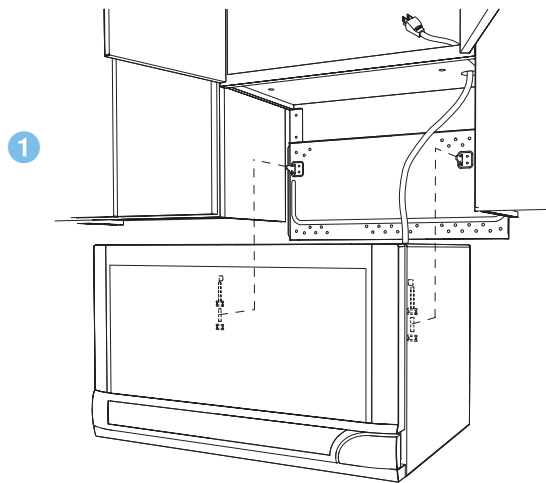
Over the Counter



Separate 15 amp or greater electrical receptacle must be located in the cabinet directly above the microwave oven.
OTC outside dimensions (WxHxD) 23 ⁷/₈" x 14 ¹/₁₆" x 15 ⁹/₁₆"



EASY Installation



PHONE Numbers...

Dial 1.800. BE SHARP (237.4277) for:

- Service: For your nearest Sharp Authorized Servicer
Parts: For your authorized parts distributor

Additional Assistance:

- Accessories and Cookbooks 1.800.642.2122
- To receive the most current specifications, visit www.dexpress.com or call Dimension Express at 775.833.3600 from a fax machine. Enter code 9026 for instructions and a directory of Sharp Microwave Ovens.

Internet Access:

www.sharppusa.com

- * Design specifications and installation recommendations are subject to change without notice. Always consult your contractor and local building codes.