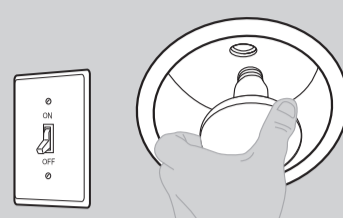


Quick Installation

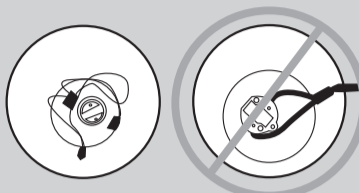


1 Turn off the circuit breaker and light switch to the lights you wish to change to LightSpeakers®. Remove the light bulb in your existing recessed fixture* (Figure A).



(Figure A)

2 Check the connector. If your fixture is NOT an edison socket, these LightSpeakers® will not work in your fixtures (Figure B).



(Figure B)

3 Test fit the LightSpeaker®. If it fits without any modification, remove it and go to Step 7.

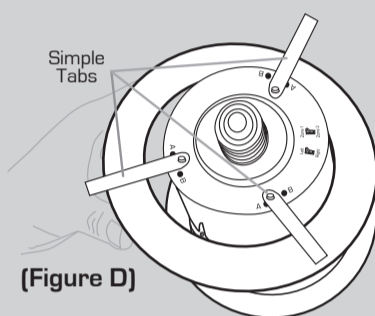
4 Remove the existing trim ring and any included reflector, socket plates/arms or clips, so that the edison socket is hanging from its pigtail (Figure C).



(Figure C)

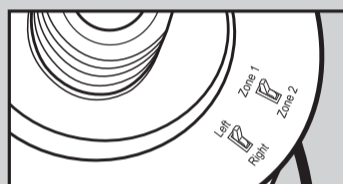
5 Slide the included trim ring over the LightSpeaker®, smooth side out (Figure D).

6 Adjust the SimpleTabs™ on the back of the LightSpeaker® to either A (5" recessed light fixture) or B (6" recessed light fixture) (Figure D).



(Figure D)

7 Set the zone switch on the back of the LightSpeakers® to one. Set the left/right stereo switch (Figure E). For additional information on zones go to pg 17 in the owner's manual.

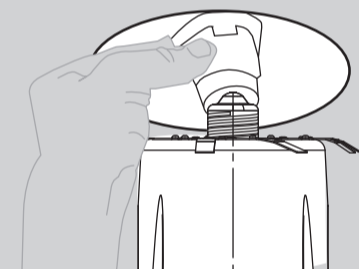


(Figure E)

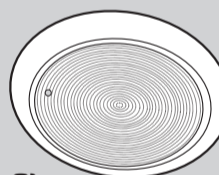
8 Easiest Install
If you skipped steps 4-6 your LightSpeakers® will fit with no modifications, screw the LightSpeaker® into the fixture.

SimpleTab™ Install

Start here if you did not skip steps 4-6. Hold the hanging edison tightly and screw the LightSpeaker® into the edison socket (Figure F). While continuing to hold the unit level and steady, push it firmly into the recessed fixture, until the trim ring sits flush against the ceiling (Figure G). Test your circuit, by turning on the circuit breaker and light switch from step 1. Leave the circuit breaker on. If the light does not come after 5 seconds, see the owner's manual (pg 22).

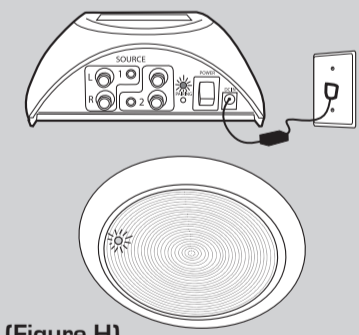


(Figure F)



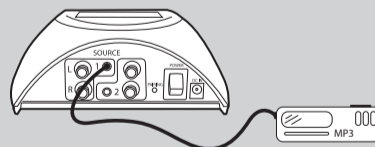
(Figure G)

9 Make sure the light switch from step 1 is in the off position. Plug in the transmitter. Push the pairing button on back of transmitter. When pairing light starts to flash, turn on the light switch from step 1. Pairing is complete when LEDs on LightSpeakers® turn green (Figure H).



(Figure H)

10 Using the supplied audio cords, plug your MP3, CD player, television or other desired sources to back of transmitter (Figure I). If at this point your remote does not work, consult the manual.



(Figure I)

*Installations vary. Consult owner's manual. Spanish instructions on back.

Enjoy your LightSpeakers!

Klipsch Technical Support

Toll Free: 1-800-KLIPSCH (1-800-554-7724)
Monday - Friday, 8:00 AM - 5:30 PM EST
E-mail: technicalsupport@klipsch.com



Purchase additional LightSpeakers, LED lights, rechargeable RockSpeakers and other accessories at www.klipsch.com.