

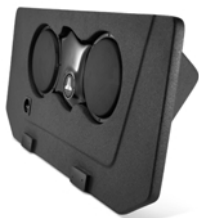
# Stealthbox®

## INSTALLATION GUIDE

for the

**SB-GM-AVAL/12W3v2/BK**

(2001-Up Chevrolet Avalanche &  
2002-Up Cadillac EXT;  
will not fit H2 SUT)



This Stealthbox is a product which requires professional installation skills and tools.

Please read this installation guide thoroughly before beginning the project. It will guide you step by step through the installation. Several of the steps in this process may require two people to accomplish.

It is absolutely vital that the enclosure be properly mounted to the vehicle according to these instructions. Failure to mount the enclosure properly presents two problems: 1) The sub-bass performance will suffer due to the movement of the enclosure caused by the force exerted by the woofer(s) and 2) A loose enclosure presents a serious safety hazard in the event of a collision or sudden deceleration.

*Please enjoy your JL Audio Stealthbox responsibly.*

**JL AUDIO®**  
*Ahead of the Curve™*

[www.jlaudio.com](http://www.jlaudio.com)

**START  
HERE**



**STEP 1:** With the front seats moved as far forward as possible and the rear seats folded down. Remove the pair of plastic hinge covers.



**STEP 2:** With a 3/8" drive ratchet and a 13mm deep socket. Remove the bolts and nuts that secure the hinges to the mid-gate and floor.



**STEP 3:** Remove the the mid-gate out of the vehicle.



**STEP 4:** Using a 3/8" drive ratchet and a T-30 Torx socket. Remove the pair of latches from the mid-gate.

There will be a spacer per bolt that needs to be saved for the following step.

\*Remember to give the consumer their OEM mid-gate back.



**STEP 5:** Mount the OEM latches to the top of the Stealthbox. Using the supplied four (pair per latch) phillips head screws and also using the OEM spacer per screw.



**STEP 6:** Before placing the Stealthbox into the vehicle. Prop up the hinged flaps, that laying on the rear seats. There is a driver's side and passenger's side.

This will make it a lot easier to place the Stealthbox into the correct position. These also need to be behind the Stealthbox.

Use the loop tie downs that are located on the side walls, to hold these flaps up.

**Continued on Next Page →**

Cont.  
From  
Previous  
Page



**STEP 7:** With help from a second person, place the Stealthbox into the vehicle and into position.

With the Stealthbox into position, Line up the hinges' mounting holes to the floor and to the Stealthbox. Secure tightly.



**STEP 8:** With the proper mounting of the Stealthbox, You should be able to lower and raise the Stealthbox with no problems.

If you have problems, you need realign line up the hinges or the latches.



**STEP 9:** With everything lined up, replace the plastic hinge covers from **STEP 1**.



**CONGRATULATIONS!  
INSTALL COMPLETE.**

**Included Hardware:**  
**(4)** 1/4"-20 x 2" Phillips Head  
Screws

## Specifications:

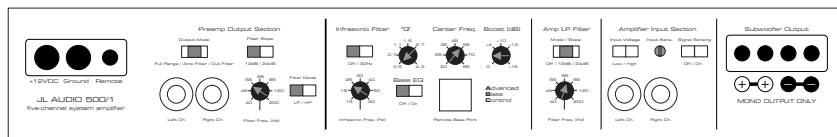
**Enclosure Type:** Acoustic Suspension (Sealed)

**Driver Type:** 2) 12W3v2-D4

**Nominal Impedance:** 4Ω

**Cont. Power Handling:** 600 Watts

JL Audio recommends using a high quality amplifier such as the JL Audio 500/1. The diagram below shows the recommended crossover, infrasonic filter and equalizer settings for the 500/1 when being used to power your Stealthbox®.



The JL Audio 500/1 is a very versatile audio component. Please consult the owner's manual for detailed information about installing and tuning this amplifier.

## Mid/High Frequency Driver Information:

**Front Location Driver Size:**

6.5" separates

**Applicable JL Audio Products:**

ZR, XR, VR, TR6540-CSi

**Rear Location Driver Size:**

5.25"

**Applicable JL Audio Products:**

XR, VR, TR525-CXi

