

SB-GM-VET/10W3 STEALTHBOX™ Fits '97-Up Chevrolet C5 Corvettes

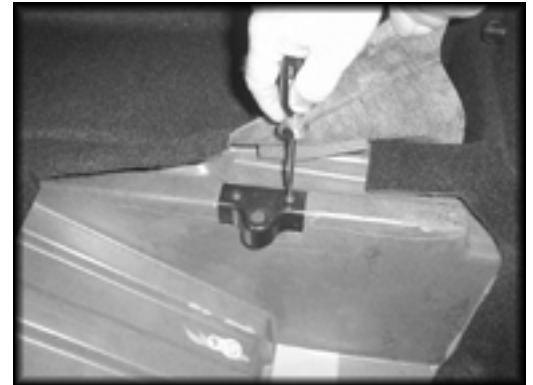
Installation Guide:

This Stealthbox is a product which requires professional installation skills and tools. Please read this installation guide thoroughly before beginning the project. It will guide you step by step through the installation. Several of the steps in this process may require two people to accomplish.

It is absolutely vital that the enclosure be properly mounted to the vehicle according to these instructions. Failure to mount the enclosure properly presents two problems: 1) The sub-bass performance will suffer due to the movement of the enclosure caused by the force exerted by the woofer and 2) A loose enclosure presents a serious safety hazard in the event of a collision or sudden deceleration.

STEP 1: Remove the cargo cover in the rear hatch area and cut the carpet so that it goes down into the well approximately 2". No carpet should be left in the bottom or on the sides (except for the 2" at the top) of the well.

STEP 2: Remove the brackets located on each side of the cargo well. These will be re-installed later and used to secure the Stealthbox™.



STEP 3: Place the supplied wax squares in the locations pictured to the right.

STEP 4: Fully insert the supplied bolts into the Stealthbox™.



STEP 5: Place the Stealthbox into the vehicle. This will leave an impression of the bolt-head on each of the wax squares.

STEP 6: Remove the Stealthbox™.



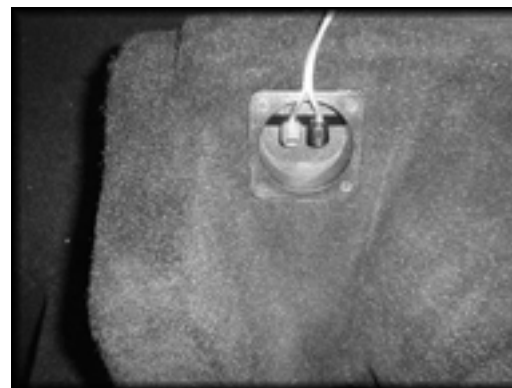
CAUTION: Check under the vehicle for any loose brake lines, fuel lines or other hazards before drilling.

Always wear eye protection when drilling.

STEP 7: Drill a 3/8" diameter hole through the cargo area floor using the indentation in the wax squares as guides. Make sure you hold the drill straight and that the holes you are drilling are centered on the wax marks.

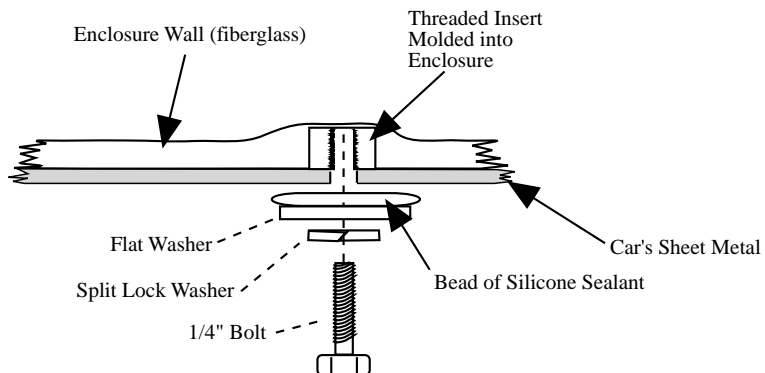


STEP 8: Run speaker wire to the Stealthbox™ installation area and connect it to the enclosure.

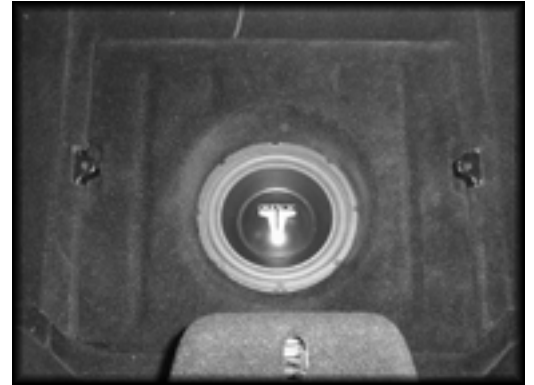


STEP 9: Remove the bolts from the Stealthbox™ and place the enclosure in its designated location within the vehicle.

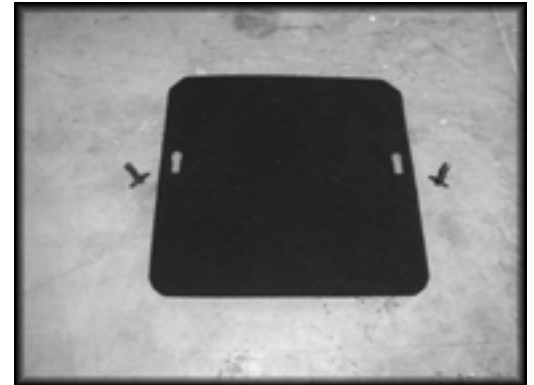
STEP 10: Secure the enclosure from underneath the vehicle.



STEP 11: Re-install the cargo well cover brackets.



STEP 12: Remove the clips from the stock cargo well cover and install them on the supplied cargo well cover/grille.



STEP 13: Place the new cargo well cover/grille into the vehicle and secure it by placing the clips into the brackets (as stock).



This completes the installation.

Specifications:

- Driver: 10W3-D2
- Enclosure type: Sealed
- Power handling: 250 Watts Continuous
- Final Impedance: 4Ω

