

# Stealthbox®

**INSTALLATION GUIDE**  
for the  
**SB-F-SUPRCNSL/8W7**  
**2008-Up Ford Super Duty Trucks**  
with front bucket seating

*Thank you for choosing a JL Audio Stealthbox® for your automotive sound system. With proper installation, your new vehicle-specific enclosed subwoofer system will deliver years of listening pleasure.*

*We strongly recommend that you have your new Stealthbox® installed by your authorized JL Audio dealer. The installation professionals employed by your dealer have the necessary tools and experience to disassemble and reassemble your vehicle properly. Also, keep in mind that your warranty coverage extends to 2 years if your system is installed or approved by your authorized JL Audio dealer. If you prefer to perform your own installation, please read this installation guide completely before beginning the process.*

**JL AUDIO®**  
Ahead of the Curve™

## ! IMPORTANT

If you choose to perform the installation yourself, it is absolutely vital that the Stealthbox® be properly mounted to the vehicle according to these instructions. Failure to mount the enclosure properly presents two problems:

- 1) The sub-bass performance will suffer due to the movement of the enclosure caused by the force exerted by the woofer(s).
- 2) A loose enclosure presents a serious safety hazard in the event of a collision or sudden deceleration.

## INSTALLATION DIFFICULTY:

**4** OUT OF **5**

**ESTIMATED TIME:**  
**2-3 HOURS**



### STEP 1

Remove all contents from the center console.

Remove the center console from the truck.

Keep the mounting bolts that secure the console to the floor. These are to be reused in future steps.



### STEP 2

Remove the lid.



### STEP 3

Remove the front panel / cup holders



**STEP 4**  
Remove the rear panel / cup holders.



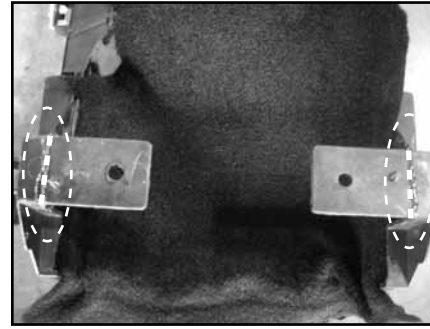
**STEP 5**  
Remove the side panels.



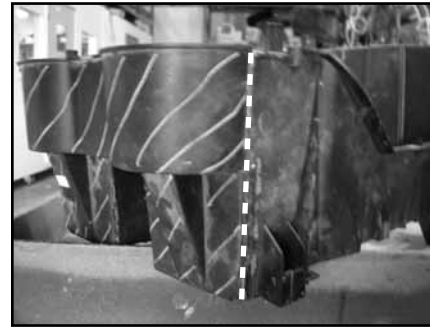
**STEP 6**  
Remove the top section of the storage console.



**STEP 7**  
Turn the bottom section of the storage console, to expose the bottom side.  
  
Mark the two areas shown in the picture. With a cut off wheel or similar tool, cut out these two sections.



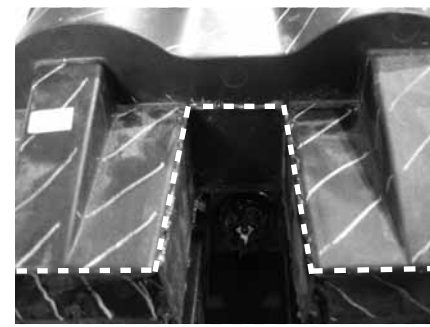
**STEP 8**  
The console is still turned to expose the bottom. Mark the two areas shown in the picture. With a cut off wheel or similar tool, cut out these two sections.



The front section of this storage console will need to be removed. Read **STEPS 9-11** to have a complete understanding of the proper procedure on the removal of this front section.

**STEP 9**  
Flip the storage console, so the top side is up.

Starting at the front left of the storage console. Mark the line shown in the picture, top to bottom.



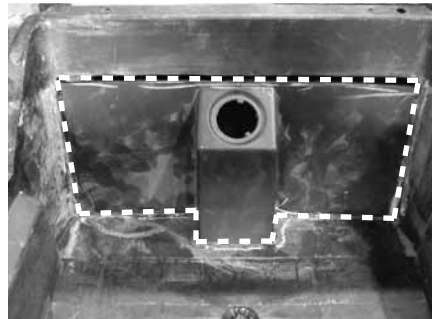
**STEP 10**  
Looking from the bottom.  
  
Working from the left side to the right side of the storage console, continue the marking as shown in the picture.



**STEP 11**  
Ending at the front right of the storage console. Mark the line shown in the picture, top to bottom.  
  
With a cut off wheel or similar tool, cut on the marked lines from **STEPS 9-11**.



**STEP 11**  
Remove the 12v plug from the inner area of the storage console.



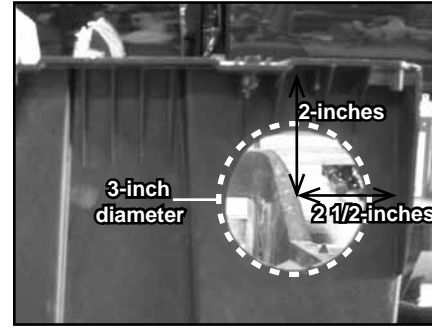
**STEP 12**  
Mark the area shown in the picture.



**STEP 13**  
With an air saw or similar tool, cut out the marked section.  
  
Use the left side wall as a cutting guide, when cutting down the left side corner. This is to make sure the cutting tool is only cutting the necessary area. You do not want to cut into the outer wall.

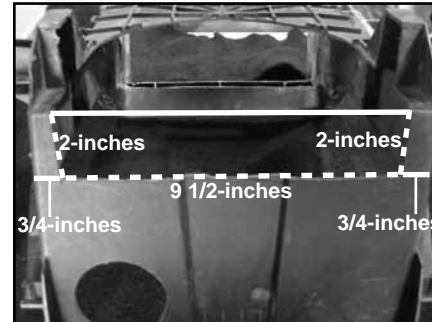


**STEP 14**  
Use the right side wall as a cutting guide, when cutting down the right side corner. This is to make sure the cutting tool is only cutting the necessary area. You do not want to cut into the outer wall.



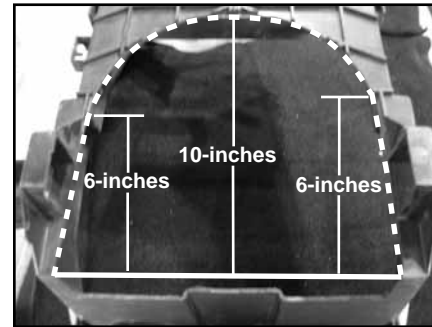
**STEP 15**  
Turn the storage console to expose the rear.  
  
At the top right area, measure and mark 2-inches from top to bottom. At the right side, measure and mark 2 1/2-inches from right to left.

Use a 3-inch hole saw or similar cutting tool, cut on the marked circle.



**STEP 16**  
Flip the bottom section of the storage console, to expose the bottom side.

Mark the area (dash lines) shown in the picture.



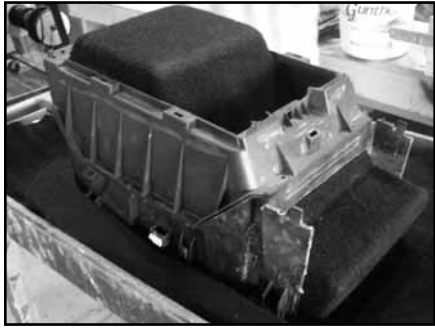
**STEP 17**  
On both side of the storage console, measure 6-inches from the back wall to the front and mark. Shown in the picture. Measure 10-inches from the middle of the rear wall to the front and mark. Shown in the picture.

Starting at the 6-inch mark on both side of the console, mark an continues curve to the 10-inch mark. Shown in the picture.

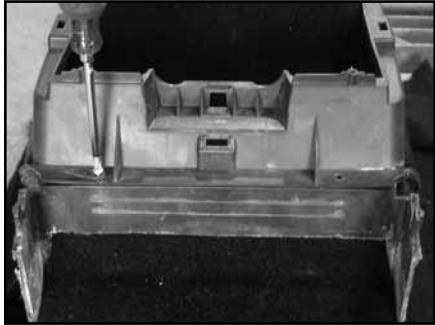
With a cut off wheel or similar tool, cut on the marked lines from **STEPs 16-17**.



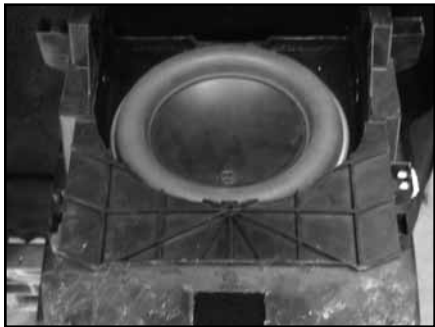
**STEP 18**  
Flip the storage console over.  
Place the Stealthbox into the modified storage console.



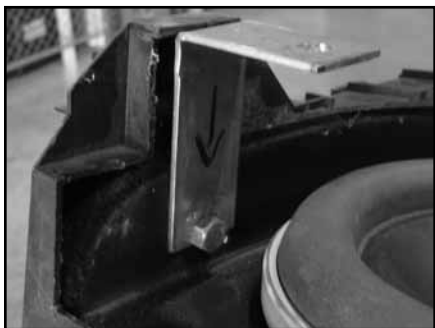
**STEP 18**  
Place the top section of the storage console back onto the bottom section, around the Stealthbox.



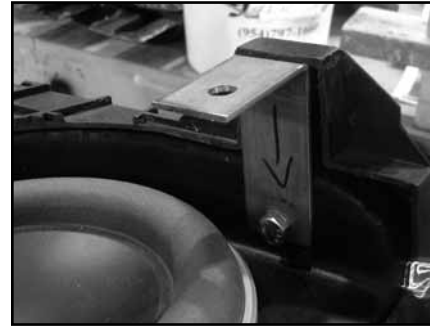
**STEP 19**  
Secure the top section with the removed factory screws from **STEP 6**.



**STEP 20**  
Flip the Stealthbox / storage console around. Make sure that the woofer will not rub against storage console, when the woofer is in motion.  
  
Trim the storage console around the woofer, if necessary.



**STEP 21**  
Using the supplied hardware, secure one of the L-brackets to the right side of the Stealthbox®. The longer side of the L-bracket runs down to the Stealthbox® threaded insert.



**STEP 22**  
Using the supplied hardware, secure one of the L-brackets to the left side of the Stealthbox®. The longer side of the L-bracket runs down to the Stealthbox® threaded insert.

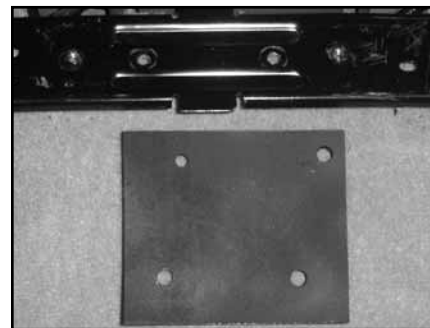


**STEP 23**  
From inside the truck, place the supplied A-bracket to the front mounting bar, that is located on the transmission hump.  
  
Grab a pair of factory bolts that were removed in **STEP 1**. Thread in the pair of factory bolts through the A-bracket, into the factory mounting bar. Only thread in about a 1/4 of the bolt into the mounting bar.

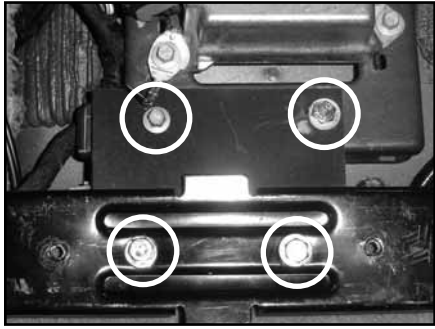


**STEP 24**  
Make sure the ignition is shut off.  
  
To the rear of the transmission hump there is a silver box. At the rear left corner area, you will see a grounding terminal that is bolted to the floor. Remove this bolt and terminal and secure the terminal to the floor by using the left rear mounting bolt of the silver box, as shown in the picture.

Keep the terminal's mounting bolt for future step.



**STEP 25**  
Place the supplied mounting plate behind the rear mounting bar as shown in the picture. The mounting plate's mounting holes need to reflect what is seen in the picture.



**STEP 26**

Slide the mounting plate under the rear mount bar.

The front holes need to line up to the factory thread holes, behind the silver box. Use the factory bolt that was removed in **STEP 24** to secure the front left side of the plate. Use supplied hardware to secure the front right side of the plate.

Use the supplied hardware to secure the rear of the plate to the rear mounting bar.



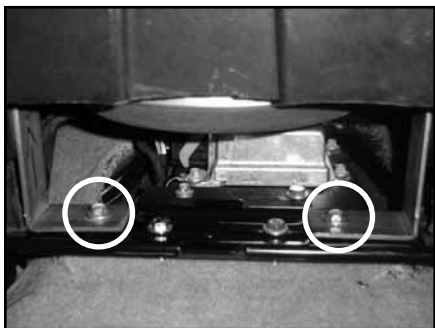
**STEP 27**

Place the Stealthbox® / storage console into the truck.



**STEP 28**

Run speaker wire from the amplifier's location to the Stealthbox® and check for proper operation of the woofer.



**STEP 29**

Using two of the factory bolts that were removed in **STEP 1**, secure both L-brackets to the rear mounting bar.

Leave these bolts loose.



**STEP 30**

Lift the front of the Stealthbox® up, place the supplied bolt from under the A-bracket into the threaded insert of the Stealthbox®. Tighten the bolt to the Stealthbox®.

Fully tighten the two factory bolts that secure A-bracket to the mounting bar, from **STEP 23**.



**STEP 31**

Fully tighten the two factory bolts that secure both L-brackets to the rear mounting bar, from **STEP 29**.



**STEP 32**

Place the right side panel of the console that was removed in **STEP 5** between the Stealthbox®/storage console and the right seat.

Place a supplied foam panel between the side panel and the Stealthbox®/storage console.

Mount the right side panel onto the Stealthbox®/storage console.



**STEP 33**

Place the left side panel of the console that was removed in **STEP 5** between the Stealthbox®/storage console and the left seat.

Place a supplied foam panel between the side panel and the Stealthbox®/storage console.

Mount the left side panel onto the Stealthbox®/storage console.



**STEP 34**  
Secure the front panel of the factory console, from **STEP 3**.



**STEP 35**  
Secure the rear panel of the factory console, from **STEP 4**.



**STEP 36**  
Secure the lid of the factory console, from **STEP 2**.



**CONGRATULATIONS**  
You have completed the installation for this model!

Please refer to the Power Recommendation section for an amplifier recommendation and basic set-up help.

**INCLUDED HARDWARE**

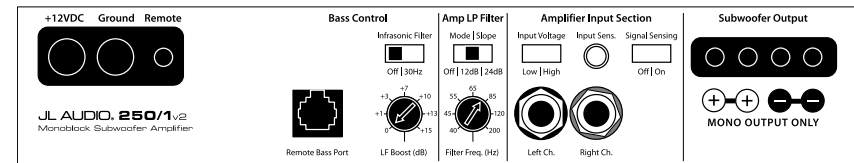
- (3) 3/8-inch x 1-inch Hex Tap Bolt
- (1) A-bracket
- (2) L-bracket
- (1) Plate Bracket
- (3) 1/4-inch 20 x 1-inch Bolt
- (2) 6-inch x 12-inch x 3/4-inch Foam
- (3) 1/4-inch USS Flat Washer
- (3) 3/8-inch Split Lock Washer
- (3) 3/8-inch Flat Washer
- (3) 1/4-inch Lock Washer
- (3) 1/4-inch -20 Hex Nut

**SPECIFICATIONS**

Enclosure Type: Acoustic Suspension (sealed)  
 Driver Type: 8W7-3  
 Nominal Impedance: 3 ohms mono  
 Continuous Power Handling: 300 Watts

**POWER RECOMMENDATION**

JL Audio recommends using a high quality amplifier such as the JL Audio 250/1v2. The diagram below shows the recommended crossover, infrasonic filter and equalizer settings for the 250/1 when being used to power your Stealthbox®.



The JL Audio 250/1v2 is a very versatile audio component. Please consult the owner's manual for even more detailed information about installing and tuning this amplifier.

**MID/HIGH FREQUENCY DRIVER FITMENT**

A variety of JL Audio coaxial and component systems will fit in the factory speaker locations of your vehicle.

**Front Speaker Size / Location:** 5-inch x 7-inch/ Front Doors  
**Fits JL Audio Models:** TR570-CXi, C5-570, C5-570x & ZR570-CSi

**Rear Speaker Size / Location:** 5-inch x 7-inch/ Rear Door  
**Fits JL Audio Models:** TR570-CXi, C5-570, C5-570x & ZR570-CSi



**JL AUDIO®**  
*Ahead of the Curve™*

(954) 443-1100

www.jlaudio.com

All specifications are subject to change without notice. "JL Audio" and the JL Audio logo, "Stealthbox" and the Stealthbox logo are registered trademarks of JL Audio, Inc. "Ahead of the Curve" and its respective logo is a trademark of JL Audio, Inc.  
**JLA-SKU#011249 - 10-26-2007** • Printed in USA • ©2007 JL Audio, Inc. • U.S. PATENTS: #5,734,734 #5,949,898 #6,118,884 #6,229,902 #6,243,479 #6,294,959 #6,501,844 #6,496,590 #6,441,685 #5,687,247 #6,219,431 #6,625,292 #D472,891 #D480,709 Other U.S. & Foreign patents pending. For more detailed information please visit us online at [www.jlaudio.com](http://www.jlaudio.com).

