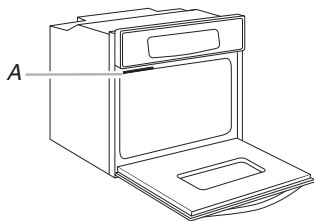


PRODUCT MODEL SERIES

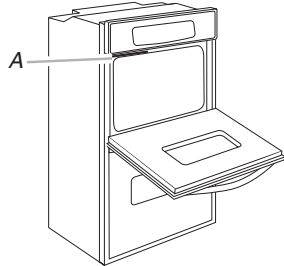
JJW2327W	JJW2430W	JJW2727W	JJW2830W
JJW2330W	JJW2527W	JJW2730W	JJW3430W
JJW2427W	JJW2530W	JJW2827W	JJW3830W

- Oven must be connected to the proper electrical voltage and frequency as specified on the model/serial number rating plate. The model/serial number rating plate is located under the control panel on single ovens and under the control panel in the upper oven cavity on double ovens. See the following illustration.



Single Oven

A. Model/serial number plate



Double Oven

A. Model/serial number plate

- Models rated from 7.3 to 9 kW at 240 volts (5.4 to 7.4 kW at 208 volts) require a separate 40-amp circuit. Models rated at 4.8 kW and below at 240 volts (3.6 kW and below at 208 volts) require a separate 20-amp circuit.

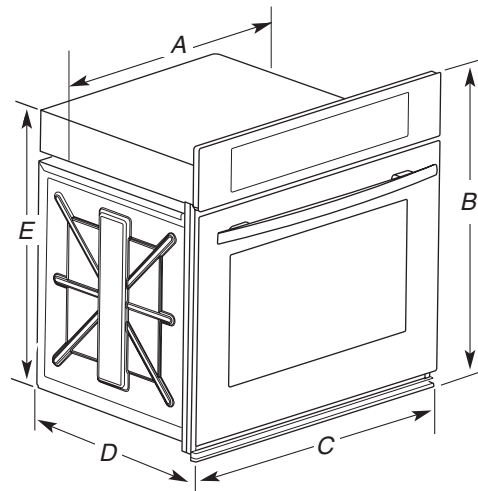
- A circuit breaker is recommended.

- Flexible cable from the oven should be connected directly to the junction box.

Flexible cable from the oven should be connected directly to the junction box.

PRODUCT DIMENSIONS

Product Dimensions - Single Ovens



27" (68.6 cm) models

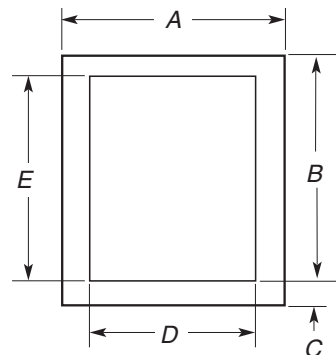
- A. 25 $\frac{1}{4}$ " (64.1 cm) max. recessed width
- B. 29 $\frac{1}{2}$ " (75.0 cm) max. overall height
- C. 26 $\frac{3}{4}$ " (67.9 cm) max. overall width
- D. 24 $\frac{3}{8}$ " (61.9 cm) max. overall depth
- E. 26 $\frac{3}{4}$ " (68.0 cm) max. recessed height

30" (76.2 cm) models

- A. 28" (71.1 cm) max. recessed width
- B. 29 $\frac{1}{2}$ " (75.0 cm) max. overall height
- C. 29 $\frac{1}{4}$ " (75.6 cm) max. overall width
- D. 24 $\frac{3}{8}$ " (61.9 cm) max. overall depth
- E. 26 $\frac{3}{4}$ " (68.0 cm) max. recessed height

Cabinet Dimensions - Single Ovens

Single Oven Undercounter (without cooktop installed above)



27" (68.6 cm) models

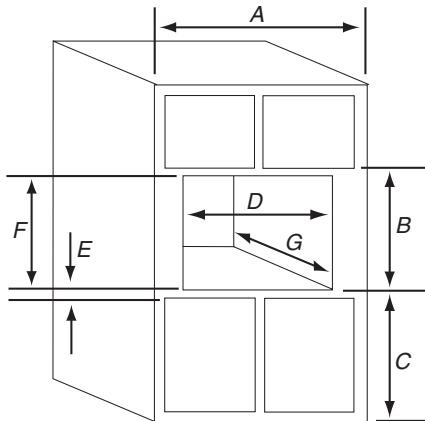
- A. 27" (68.6 cm) min. cabinet width
- B. 30 $\frac{1}{2}$ " (77.5 cm) min. from bottom of cutout to underside of countertop.
- C. 4 $\frac{5}{8}$ " (11.7 cm) bottom of cutout to floor
- D. 25 $\frac{1}{2}$ " (64.8 cm) cutout width
- E. 27 $\frac{3}{4}$ " (70.5 cm) Recommended cutout height (will fit cutout height from 27" [68.6 cm] to 29 $\frac{1}{16}$ " [73.8 cm])

30" (76.2 cm) models

- A. 30" (76.2 cm) min. cabinet width
- B. 30 $\frac{1}{2}$ " (77.5 cm) min. from bottom of cutout to underside of countertop.
- C. 4 $\frac{5}{8}$ " (11.7 cm) bottom of cutout to floor
- D. 28 $\frac{1}{2}$ " (72.4 cm) cutout width
- E. 27 $\frac{3}{4}$ " (70.5 cm) Recommended cutout height (will fit cutout height from 27" [68.6 cm] to 29 $\frac{1}{16}$ " [73.8 cm])

CABINET OPENING DIMENSIONS

Single Ovens Installed in Cabinet



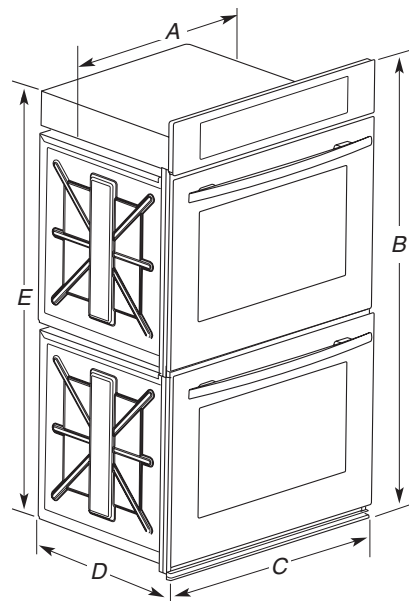
27" (68.6 cm) models

- A. 27" (68.6 cm) min. cabinet width
- B. 29³/₄" (75.5 cm) from bottom of cutout to bottom of upper cabinet door
- C. 32" (81.3 cm) recommended bottom of cutout to floor. 4" (10.2 cm) to 32" (81.3 cm) bottom of cutout to floor is acceptable.
- D. 25¹/₂" (64.8 cm) cutout width
- E. 1¹/₂" (3.8 cm) min. bottom of cutout to top of cabinet door
- F. 27³/₄" (70.5 cm) Recommended cutout height (will fit cutout height from 27" [68.6 cm] to 29⁷/₁₆" [73.8 cm])
- G. 24" (61.0 cm) minimum cutout depth

30" (76.2 cm) models

- A. 30" (76.2 cm) min. cabinet width
- B. 29³/₄" (75.5 cm) from bottom of cutout to bottom of upper cabinet door
- C. 32" (81.3 cm) recommended bottom of cutout to floor. 4" (10.2 cm) to 32" (81.3 cm) bottom of cutout to floor is acceptable.
- D. 28¹/₂" (72.4 cm) cutout width
- E. 1¹/₂" (3.8 cm) min. bottom of cutout to top of cabinet door
- F. 27³/₄" (70.5 cm) Recommended cutout height (will fit cutout height from 27" [68.6 cm] to 29⁷/₁₆" [73.8 cm])
- G. 24" (61.0 cm) minimum cutout depth

Product Dimensions - Double Ovens



27" (68.6 cm) models

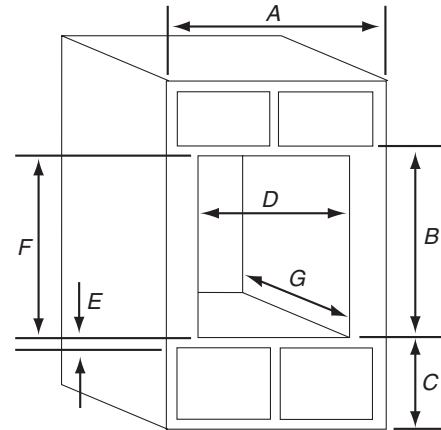
- A. 25¹/₄" (64.1 cm) max. recessed width
- B. 52¹/₄" (132.8 cm) max. overall height
- C. 26³/₄" (67.9 cm) max. overall width
- D. 24³/₈" (61.9 cm) max. overall depth
- E. 49¹/₂" (125.8 cm) max. recessed height

30" (76.2 cm) models

- A. 28" (71.1 cm) max. recessed width
- B. 52¹/₄" (132.8 cm) max. overall height
- C. 29³/₄" (75.6 cm) max. overall width
- D. 24³/₈" (61.9 cm) max. overall depth
- E. 49¹/₂" (125.8 cm) max. recessed height

Cabinet Dimensions - Double Ovens

Double Ovens Installed in Cabinet



27" (68.6 cm) models

- A. 27" (68.6 cm) min. cabinet width
- B. 52¹/₂" (133.4 cm) from bottom of cutout to bottom of upper cabinet door
- C. 14³/₄" (37.5 cm) recommended bottom of cutout to floor. 4" (10.2 cm) to 14³/₄" (37.5 cm) bottom of cutout to floor is acceptable.
- D. 25¹/₂" (64.8 cm) cutout width
- E. 1¹/₂" (3.8 cm) min. bottom of cutout to top of cabinet door
- F. 49³/₄" (126.4 cm) recommended cutout height (will fit cutout height from 49³/₄" [126.4 cm] to 51¹⁵/₁₆" [131.9 cm])
- G. 24" (61.0 cm) minimum cutout depth

30" (76.2 cm) models

- A. 30" (76.2 cm) min. cabinet width
- B. 52¹/₂" (133.4 cm) from bottom of cutout to bottom of upper cabinet door
- C. 14³/₄" (37.5 cm) recommended bottom of cutout to floor. 4" (10.2 cm) to 14³/₄" (37.5 cm) bottom of cutout to floor is acceptable.
- D. 28¹/₂" (72.4 cm) cutout width
- E. 1¹/₂" (3.8 cm) min. bottom of cutout to top of cabinet door
- F. 49³/₄" (126.4 cm) recommended cutout height (will fit cutout height from 49³/₄" [126.4 cm] to 51¹⁵/₁₆" [131.9 cm])
- G. 24" (61.0 cm) minimum cutout depth