



27" (68.6 CM) AND 30" (76.2 CM) ELECTRIC BUILT-IN CONVECTION MICROWAVE OVEN

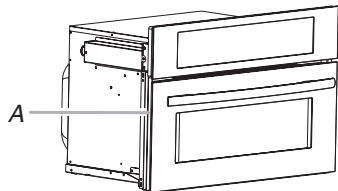
PRODUCT MODEL SERIES

JMC2430W

ELECTRICAL CONNECTION

To properly install your microwave oven, you must determine the type of electrical connection you will be using and follow the instructions provided for it here.

- Microwave oven must be connected to the proper electrical voltage and frequency as specified on the model/serial number rating plate. The model/serial number rating plate is located on the left-hand side trim.

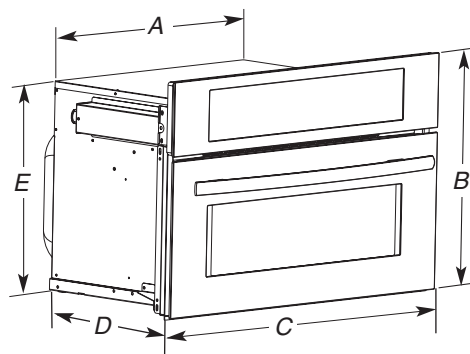


A. Model/serial number plate

- The microwave oven rated 120/240 volt, 20-amp, has 4 wires (L1, L2, N and G) in the flex conduit and should be connected to a 20-amp maximum rated circuit, overcurrent protected on both the L1 and L2 circuits.
- A time-delay fuse or circuit breaker is recommended.

PRODUCT DIMENSIONS

27" (68.6 cm) and 30" (76.2 cm) Microwave Ovens



27" (68.6 cm) models

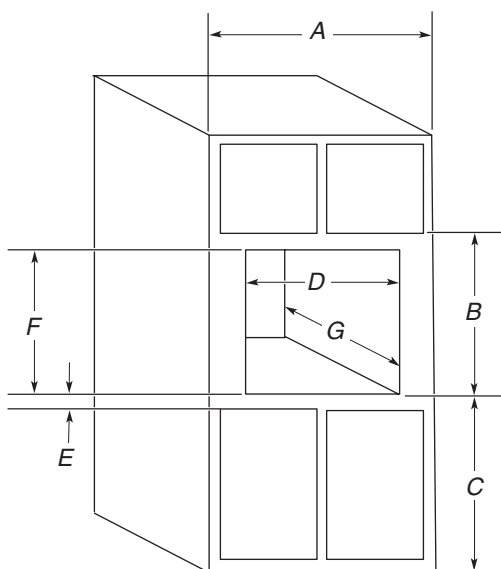
- A. 25 $\frac{1}{4}$ " (64.1 cm) recessed width
- B. 19 $\frac{1}{8}$ " (48.6 cm) overall height
- C. 26 $\frac{3}{4}$ " (67.9 cm) overall width
- D. 22 $\frac{7}{16}$ " (57.0 cm) overall depth
- E. 16 $\frac{3}{4}$ " (42.5 cm) recessed height

30" (76.2 cm) models

- A. 28 $\frac{1}{4}$ " (71.7 cm) recessed width
- B. 19 $\frac{1}{8}$ " (48.6 cm) overall height
- C. 29 $\frac{3}{4}$ " (75.6 cm) overall width
- D. 22 $\frac{7}{16}$ " (57.0 cm) overall depth
- E. 16 $\frac{3}{4}$ " (42.5 cm) recessed height

CABINET OPENING DIMENSIONS

27" (68.6 cm) and 30" (76.2 cm) Microwave Ovens



27" (68.6 cm) models

- A. 27" (68.6 cm) min. cabinet width
- B. 19 $\frac{1}{4}$ " (48.9 cm) from bottom of cutout to bottom of upper cabinet door
- C. 40" (101.6 cm) bottom of cutout to floor (recommended)
- D. 25 $\frac{1}{2}$ " (64.8 cm) cutout width
- E. 1 $\frac{1}{2}$ " (3.8 cm) min. bottom of cutout to top of cabinet door
- F. 18 $\frac{1}{4}$ " (46.4 cm) recommended cutout height (will fit cutout height from 17" [43.2 cm] to 18 $\frac{1}{4}$ " [46.4 cm])
- G. 21 $\frac{7}{8}$ " (55.5 cm) min. cutout depth

30" (76.2 cm) models

- A. 30" (76.2 cm) min. cabinet width
- B. 19 $\frac{1}{4}$ " (48.9 cm) from bottom of cutout to bottom of upper cabinet door
- C. 40" (101.6 cm) bottom of cutout to floor (recommended)
- D. 28 $\frac{1}{2}$ " (72.4 cm) cutout width
- E. 1 $\frac{1}{2}$ " (3.8 cm) min. bottom of cutout to top of cabinet door
- F. 18 $\frac{1}{4}$ " (46.4 cm) recommended cutout height (will fit cutout height from 17" [43.2 cm] to 18 $\frac{1}{4}$ " [46.4 cm])
- G. 21 $\frac{7}{8}$ " (55.5 cm) min. cutout depth