



Model No:  
**1190U**  
**Professional Series**  
 UNDERMOUNT SINK

www.oliverisinks.com

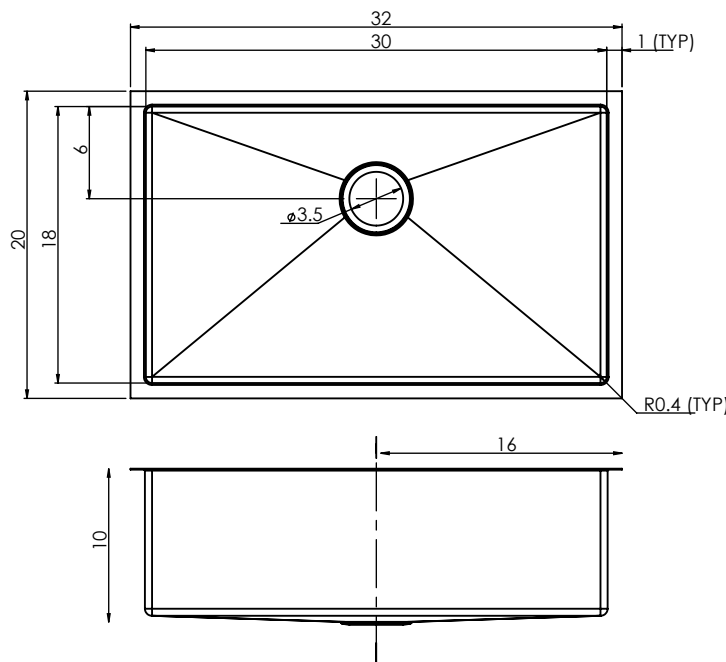


**18/10**  
 STAINLESS  
 STEEL

**16**  
 GAUGE



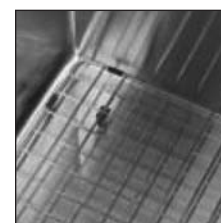
Model No: **1190U**  
 DIMENSIONS



INCLUDED  
 ACCESSORIES



Basket Waste x1



Basin Protector

|  |  |   |   |   |
|--|--|---|---|---|
| <p><b>MATERIAL</b><br/>         Stainless Steel<br/>         304 Grade<br/>         16 Gauge</p> | <p><b>CONSTRUCTION</b><br/>         Fabricated bowl with<br/>         1/2" (10mm) internal<br/>         radius corners</p> | <p><b>SHIPPING WEIGHT</b><br/>         (Packed)<br/>         38lb</p> | <p><b>INSTALLATION METHOD</b><br/>         Designed to be<br/>         undermounted into<br/>         a counter</p> | <p><b>CABINET</b><br/>         Minimum<br/>         36"</p> |
|--|--|---|---|---|



Head Office  
 Tasman Sinkware Pty Ltd  
 51 Naweena Rd, Regency Park  
 South Australia, 501  
 AUSTRALIA

North America  
 1230 Railroad St  
 Corona CA 92882  
 northamerica@oliverisinks.com

This sink is fabricated by a  
 partner supplier according to  
 Tasman Sinkware's specifications  
 and quality standards