

SB-GM-BLZR4DR/1OW1 STEALTHBOX™

**Fits 1995-Up Chevrolet S-10 Blazer,
GMC Jimmy, Oldsmobile Bravada 4dr.**

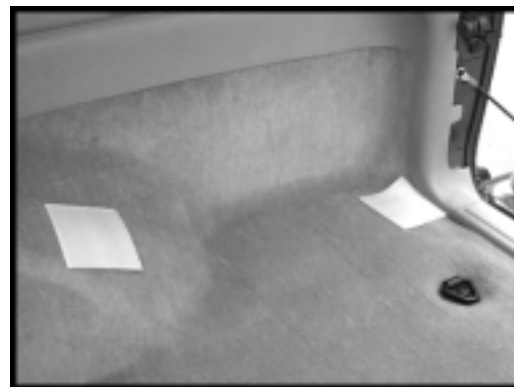
Installation Guide:

This Stealthbox is designed to mount in the passenger side-rear corner of the hatch area and is a product which requires professional installation skills and tools. We highly recommend that an authorized JL Audio dealer performs the installation.

Please read this installation guide thoroughly before beginning the project. It will guide you step by step through the process. Some steps may require two people to accomplish.

It is absolutely vital that the Stealthbox be properly mounted to the vehicle according to these instructions. Failure to mount the enclosure properly will result in inferior bass performance and potential danger in the event of a collision or sudden jolt to the vehicle.

STEP 1: Place the two supplied 4" wax squares, sticky side down, on the rear passenger-side carpet as shown in the photo at right.



STEP 2: Fully insert (don't overtighten) both supplied 3/8" bolts into the inserts bonded to the underside of the Stealthbox. See arrows at right.

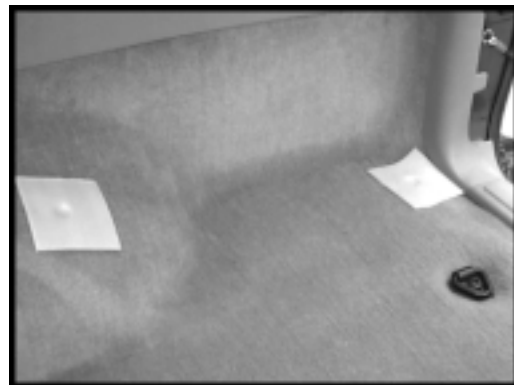


STEP 3: Place the Stealthbox into its mounting location, making sure that it fits snugly against all panels. Once aligned properly, push down firmly on the Stealthbox, in order to make clear impressions on the wax squares with the bolts on its underside.



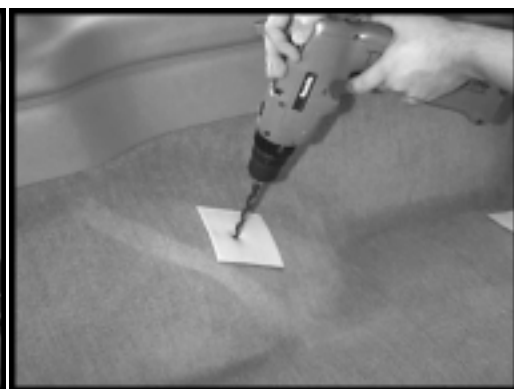
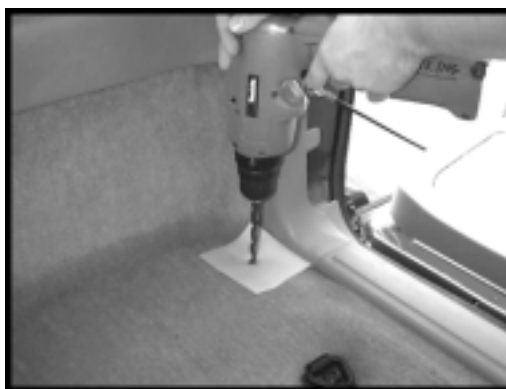
STEP 4: Remove the enclosure from the vehicle carefully by lifting it up and out so as not to confuse the impressions in the sheet wax. You should see clear marks on the sheet wax as in the photo at right.

STEP 5: Remove the bolts from the Stealthbox.



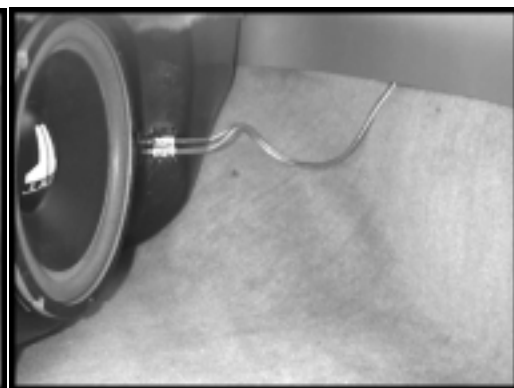
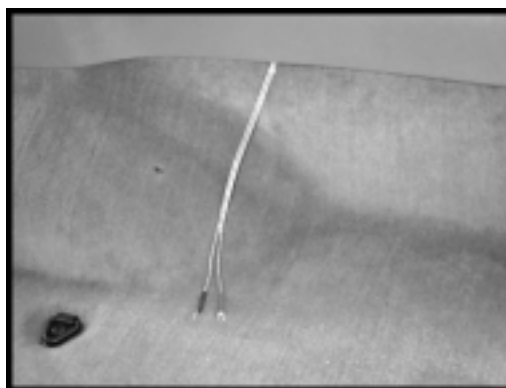
STEP 6: Check under the rear of the vehicle to make sure there are no loose wires, brake lines or fuel lines prior to drilling through the sheet metal.

STEP 7: Using a 1/2" carbide drill bit, drill 2 holes centered on the indentations in the sheet wax. Hold drill perpendicular to the surface being drilled. Always wear eye protection when drilling.



STEP 8: Remove the wax sheets and trim the excess carpet from the holes you've just drilled.

STEP 9: Run speaker wire behind the trim panel as shown in photo at right and connect to the terminal strip on the Stealthbox. Test the enclosure's operation before continuing further.



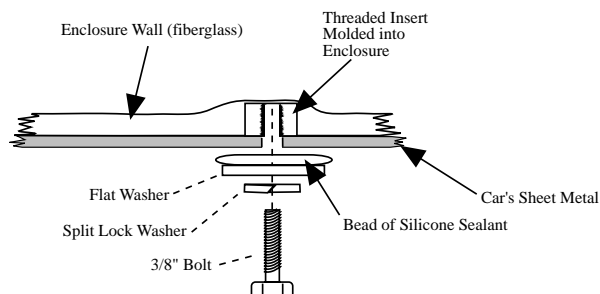
STEP 10: Place the enclosure into its mounting location taking care to route the speaker wire so that it will not get stuck between the enclosure and the vehicle trim panel (bad fit) or come into contact with the woofer (bad sound).



STEP 11: While one person holds the enclosure in place from inside the vehicle, a second person will bolt the enclosure into place using the supplied hardware. See diagram below for detail. Before tightening the bolts, apply a bead of silicone sealant between the flat washer and the vehicle's sheet metal to prevent leaks.



IMPORTANT! Once the bolts are tightened, spray undercoating onto the bolt heads to prevent rust, leaks and loosening of the bolts over time. Failure to do so may result in corrosion and could present a safety hazard!



Supplied Hardware:

- (2) 4" Sheet Wax Squares
- (2) 3/8" x 1 1/4" Bolts
- (2) Flat Washers
- (2) Split Lock Washers



Finished Installation

Specifications:

Enclosure Type: Acoustic Suspension (sealed)
Driver Type: JL AUDIO 10W1-4 subwoofer
Cont. Power Handling: 125 W
Nominal Impedance: 4Ω

