

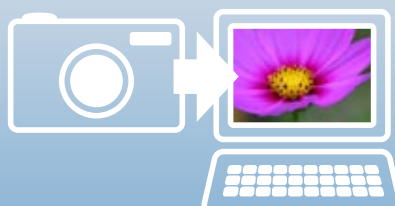
Software Guide

for Windows

- ZoomBrowser EX
- PhotoStitch

Special Features

Transfer Images and Movies



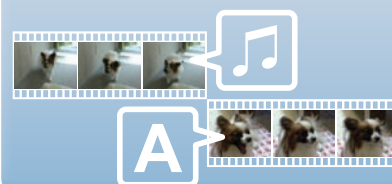
Insert Text



Save Still Images From Movies



Edit Movies



Print Images



Back Up to a CD



Attach Images to Email



Plus many other useful features

About this Manual

Notation Conventions

The contents of this manual are classified according to the following symbols.

! IMPORTANT

- The “Important” sections contain operating precautions or important topics. Ensure that you read them.

💡 HINT

- The “Hint” sections contain procedural suggestions and tips for your convenience. Read them as necessary.

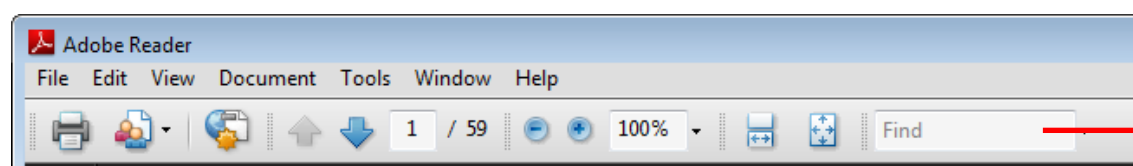
Operating Environment

- This manual uses Windows Vista screen shots and procedures in the explanations. The screen shots and procedures may appear slightly different if you are using another version of Windows.
- The displayed screens and procedures may also differ slightly from the examples depending upon the camera or printer model in use.
- The explanations in this guide are based on the premise that a Canon compact digital camera will be used with the software.

Word Searches

This document is provided as an Adobe Reader document. Use Adobe Reader’s Search functions to find specific words or phrases that you recall but cannot find. To access this function, in Adobe Reader click the [Edit] menu and select the [Search] option.

If you are using Adobe Reader 8 or later, you can also perform searches with the [Find] function right on the toolbar.



Input search text here

Precautions for Connecting the Camera to the Computer

- When connecting the camera to the computer with an interface cable, make sure to connect the cable directly to the computer's USB port. The connection may not operate correctly if you attach the camera to the computer via a USB hub.
- The connection may not operate correctly if you are using other USB devices, excluding USB mice or keyboards, at the same time as the camera. If this occurs, disconnect the other devices from the computer and try reconnecting the camera.
- Do not connect two or more cameras at the same time to the same computer. The connections may not operate correctly.
- Do not allow the computer to go into sleep (standby) mode while a camera is connected via the USB interface cable. If this does happen, do not disconnect the interface cable. Try to awaken the computer with the camera in the connected state. Some computers will not awaken properly if you disconnect the camera while they are in sleep (standby) mode. Please refer to your computer manual for instructions regarding the sleep (standby) mode.
- Do not disconnect the camera from the computer if CameraWindow is displayed on the screen.

IMPORTANT

- **You are recommended to use an AC adapter (sold separately) when connecting to a computer. Ensure that you use fully charged batteries if you cannot use an AC adapter.**
- **See the *Camera User Guide* for procedures on connecting the camera to the computer.**

Table of Contents

About this Manual	2
Precautions for Connecting the Camera to the Computer	3
Things to Remember	6
The Two ZoomBrowser EX Windows	6
Windows That Communicate With the Camera and Manage Images	6
ZoomBrowser EX's Main Window	7
How to Display the Main Window	7
Names of the Main Window Parts	7
How to Perform Tasks	8
Selecting Tasks and Task Window Procedures	8
Mastering the Basics	9
Transferring Images	9
Transferring Images by Connecting the Camera to a Computer	9
Printing	12
Printing a Single Image on a Single Page	12
Index Print	14
How to Use CameraWindow	16
First Menu Screen to Open	16
Image Transfer Screen	17
Organize Images Screen	18
How to Use ZoomBrowser EX	19
Main Window	19
Display Modes	20
Display Control Panel	20
Browser Area Tasks	21
Properties Window	22
Viewer Window	23
More Advanced Techniques	24
Editing Images	24
Red Eye Correction	24
Auto Adjustment	24
Color/Brightness Adjustment	25
Adjusting Sharpness—Emphasizing Outlines	25
Trimming—Cropping a Portion of an Image	26
Inserting Text	26
Using Other Editing Software	27
Attaching Sounds	28
Creating Panoramic Images—PhotoStitch	29
Editing Movies	30
Converting RAW Images—Digital Photo Professional	31

Exporting	33
Changing Image (Stills) Sizes and Types	33
Changing Movie Sizes and Types	33
Extracting Stills from Movies	34
Exporting Shooting Information	34
Creating Computer Screen Saver Images	35
Creating Computer Wallpaper Images	35
Saving to CDs	36
Email	37
Attaching Images to Email	37
Slide Shows	38
Viewing Images in Slide Shows	38
Image Management	39
Changing File Names in Batches	39
Sorting Images into Folders by Shooting Date	39
Configuring Image Information Settings	40
Setting Star Ratings	40
Inserting Comments	40
Assigning Keywords	41
Searching, Filtering and Sorting Images	42
Searching Images	42
Filtering Images	43
Sorting Images	43
Comparing Images	44
Comparing Multiple Images	44
My Camera Settings	45
Changing the Shutter Sound and Start-Up Image	45
Transferring Images	47
Transferring Images to a Camera	47
CANON iMAGE GATEWAY	48
About CANON iMAGE GATEWAY (for U.S.A. customers only)	48
Registering	48
Available Services	49
Preference Settings	50
Customizing ZoomBrowser EX	50
Customizing the Task Buttons	50
Appendices	51
List of Available Functions	51
Supported Image Types	53
Uninstalling the Software	54
Memory Card Folder Structure	55
Troubleshooting	56

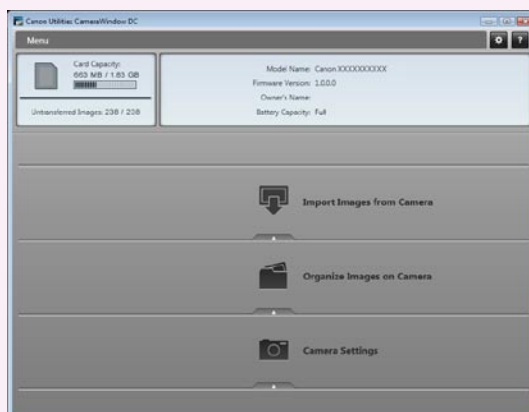
The Two ZoomBrowser EX Windows

Windows That Communicate With the Camera and Manage Images

The following two windows are the main ones used for ZoomBrowser EX procedures.



**Transfer window, which opens when a camera is connected.
CameraWindow**

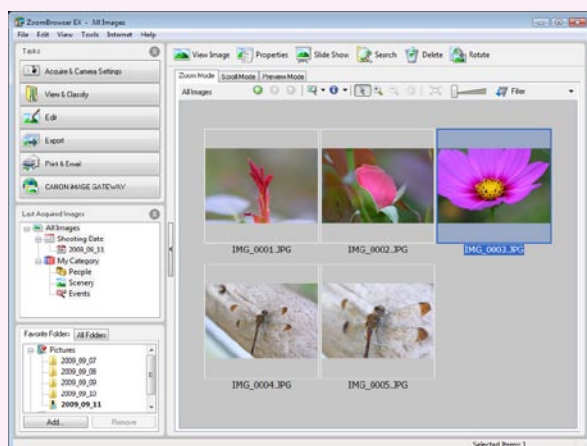


You can transfer all or a selection of images from the connected camera.

CameraWindow closes and the screen changes after the images are transferred from the camera.



**Organizing window for transferred images.
Main Window**



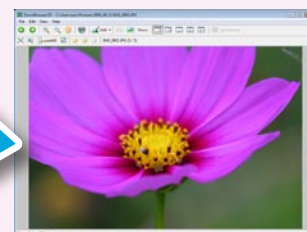
You can view, edit and print the images in the computer.



ZoomBrowser EX

Double-click this icon on the desktop.

Double-click an image.




The Viewer Window that appears when you view an image.



HINT

Use the Help Function

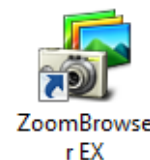
The  (Help) button or Help menu is available in most CameraWindow and ZoomBrowser EX windows. It is there for when you are unsure how to proceed.



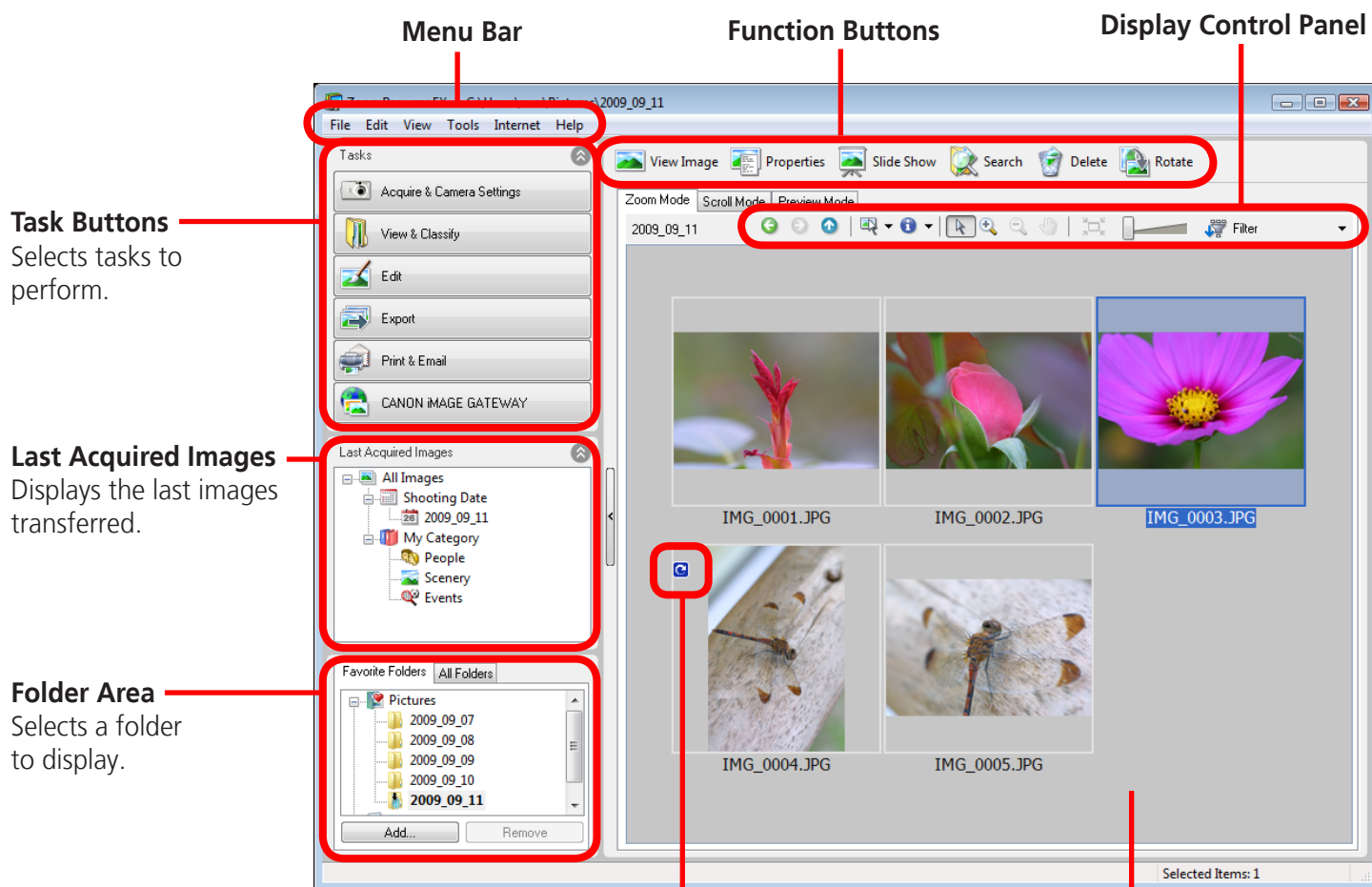
ZoomBrowser EX's Main Window

How to Display the Main Window

The Main Window will display after camera images are transferred and CameraWindow closes. You can also display it by double-clicking the ZoomBrowser EX icon on the desktop.



Names of the Main Window Parts



Properties Icon (Displays image properties)

- : Image recorded using the camera's Stitch Assist mode
- : RAW image
- : Movie
- : Image with sound memo attached
- : Protected image
- : Image recorded using the camera's AEB function
- : Rotated image (rotated in display only)

Browser Area

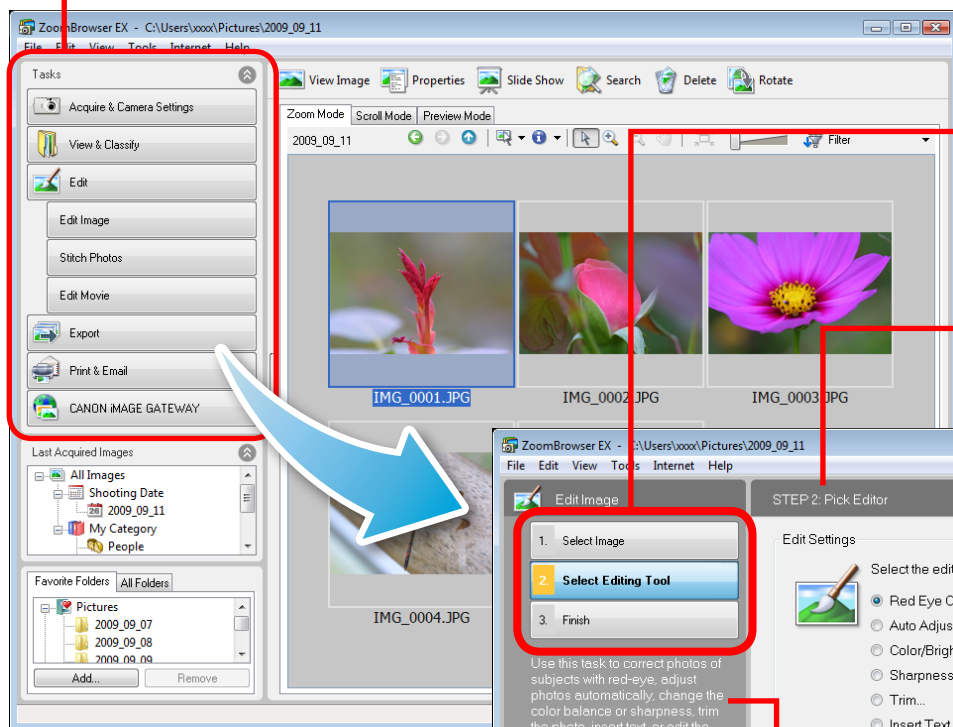
Icons that indicate image properties display around images, as shown on the left.

How to Perform Tasks

Selecting Tasks and Task Window Procedures

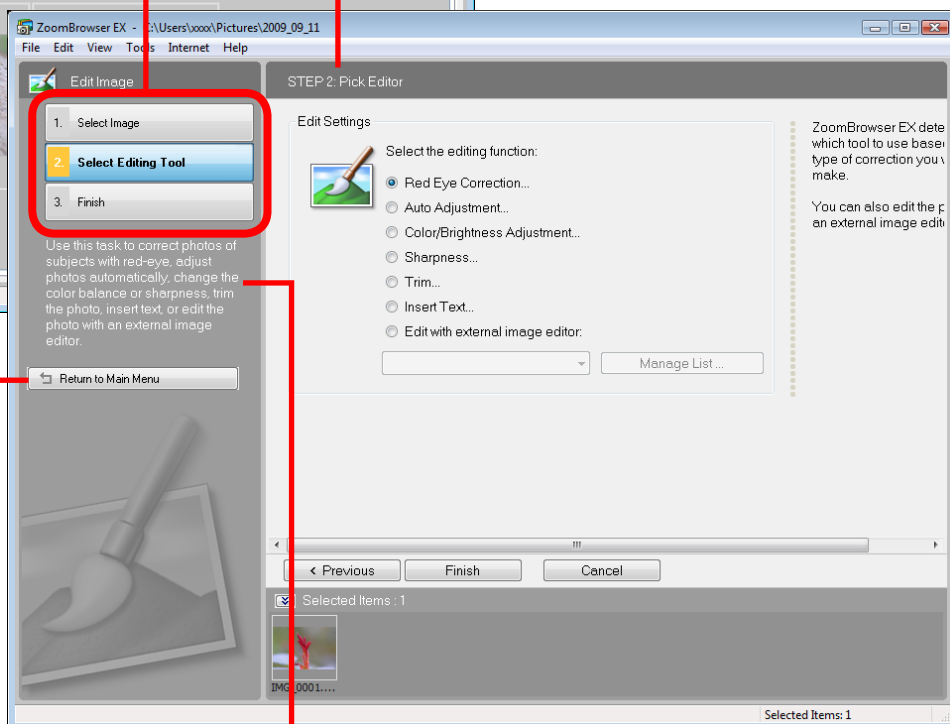
Many ZoomBrowser EX functions can be accessed by selecting a task in the Main Window and following the instructions in the guidance section of the new window. For further details on the functions, refer to the "List of Available Functions" (p. 51) in the appendix.

1 Select a task.



The major steps for the task appear here. Follow the steps in order. You can return to a previous step.

An overview for the selected task appears here.



Cancels the procedure and returns to the previous window.

2 Follow the instructions to perform the task.

Transferring Images

Transferring Images by Connecting the Camera to a Computer

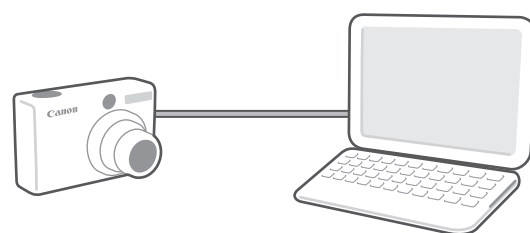
Transfer the camera images to the computer.



! IMPORTANT

- The instructions in this software manual assume that you have correctly installed the software. See the *Camera User Guide* for software installation procedures.
- For details on how to connect the camera to a computer, refer to the *Camera User Guide*. Please also refer to "Precautions for Connecting the Camera to the Computer" (p. 3) at the beginning of this guide.
- With some versions of Microsoft Windows, CameraWindow may not open when the camera is connected. In this case, double-click the ZoomBrowser EX icon on the desktop to start ZoomBrowser EX and open the Main Window. Click the [Acquire & Camera Settings] task button, followed by [Connect to Camera].

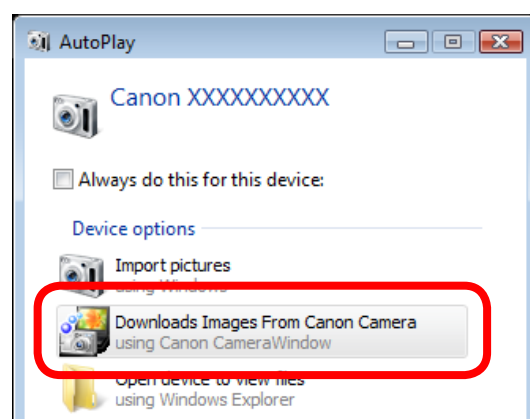
1 Connect the camera to the computer with the supplied interface cable.



2 Turn on the camera power, set it to playback mode and prepare it to communicate with the computer.

3 When a window similar to the one at the right appears, click [Downloads Images From Canon Camera using Canon CameraWindow].

With Windows XP, click [Canon CameraWindow] then [OK] in the AutoPlay window.

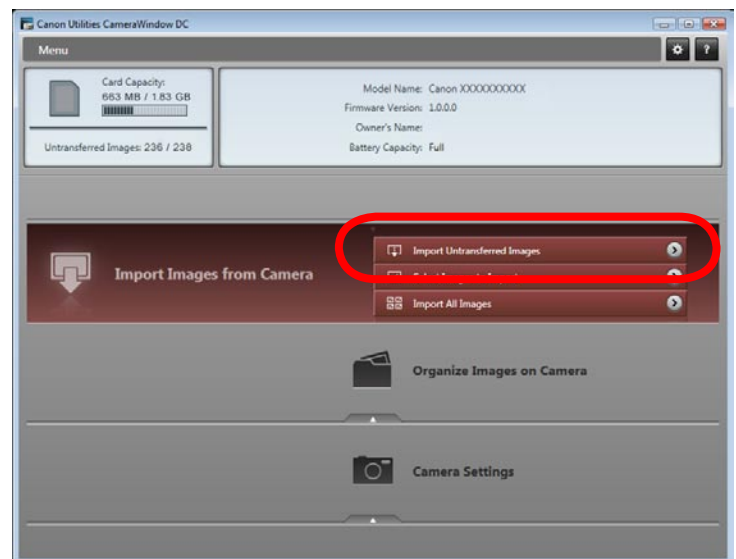


4

Click [Import Images from Camera], and then click [Import Untransferred Images].

Only images that have not yet been transferred will start to transfer.

CameraWindow (Menu Screen)

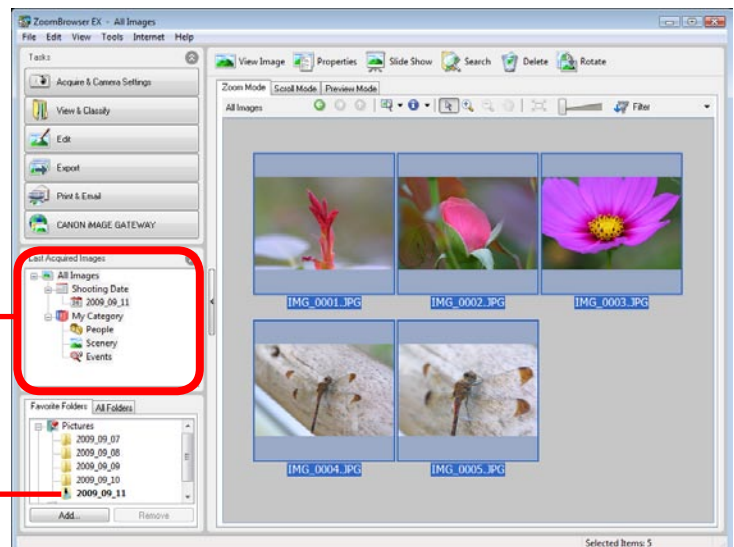


After you click [OK] in the dialog that indicates the transfer is complete and close the CameraWindow screen, the transferred images will display in the Main Window.

You can select the newly transferred images by their shooting dates or My Category (select models only) classification.




Folders containing newly acquired images

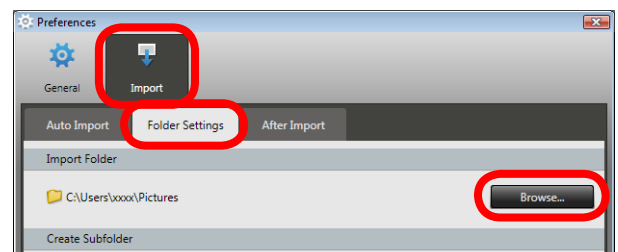


- Images from memory cards with large numbers of images (more than 1,000) may not transfer correctly. If this happens, please use a memory card reader to transfer (p. 11).
- Movie files take time to transfer since the files are large.


HINT

Changing the Transfer Destination Folder

The default settings save transferred images into the [Pictures] or [My Pictures] folders. To change the destination folder, click the  button shown on the right in Step 4 as described above, then click the [Import] button. In the [Folder Settings] tab, click [Browse] to complete settings in the screen currently displayed.

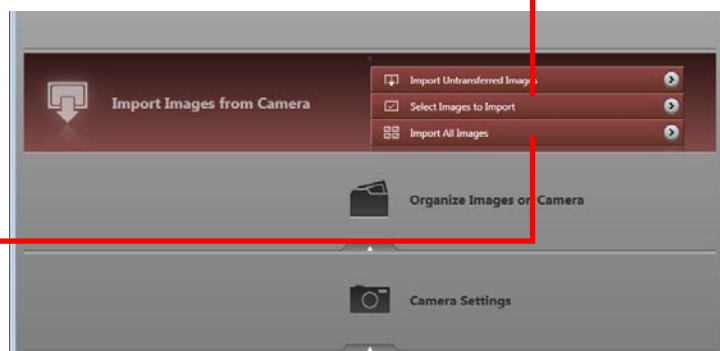


HINT**Select Images to Import**

To transfer only a selection of images from the camera, click [Import Images from Camera] in CameraWindow (menu screen), then select images in the image transfer screen, and click  (Import).

Import All Images

To transfer all images on the camera, click [Import Images from Camera] in CameraWindow (menu screen) then, [Import All Images].

**Automatically Transferring Images on ZoomBrowser EX Start-Up**

To automatically transfer images when CameraWindow starts up, click the button shown on the right in CameraWindow (menu screen), then click the [Import] button, and the [Auto Import] tab. Add a checkmark to [Start importing images automatically when this software is launched].

**Transferring from a Memory Card Reader**

An action selection window will open when you insert a memory card into the memory card reader. If you select [View/Download Images Using Canon ZoomBrowser EX], ZoomBrowser EX will start and display the following window. Use this window to perform the transferring procedures.



Transfers all images that have not yet been transferred.

Allows you to select and transfer images.

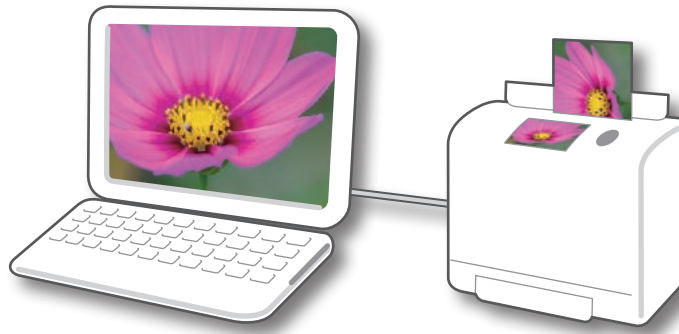
Prints images.

Configures the transfer folder and other settings.

Printing

Printing a Single Image on a Single Page

Prints one image per page.

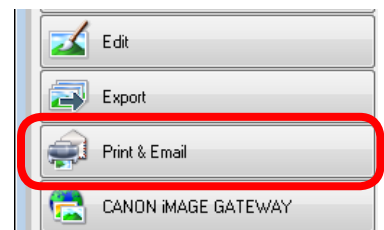


HINT

Printing Movies

Movies cannot be printed, but you can print still images saved from movies.

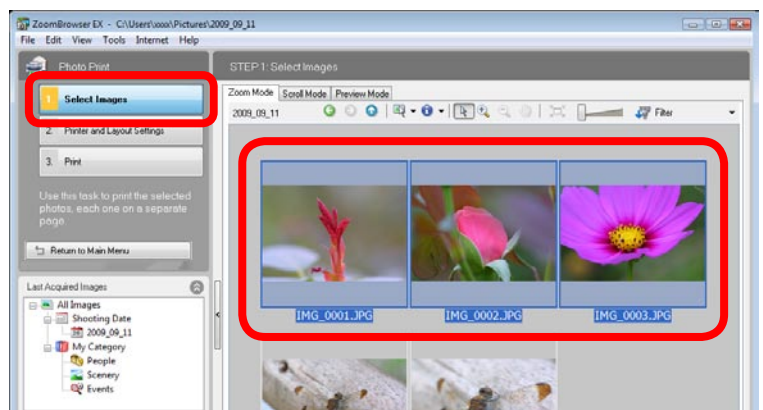
1 Click the [Print & Email] task button in the Main Window.



2 Click [Photo Print].



3 Confirm that [1. Select Images] is chosen and select images for printing.

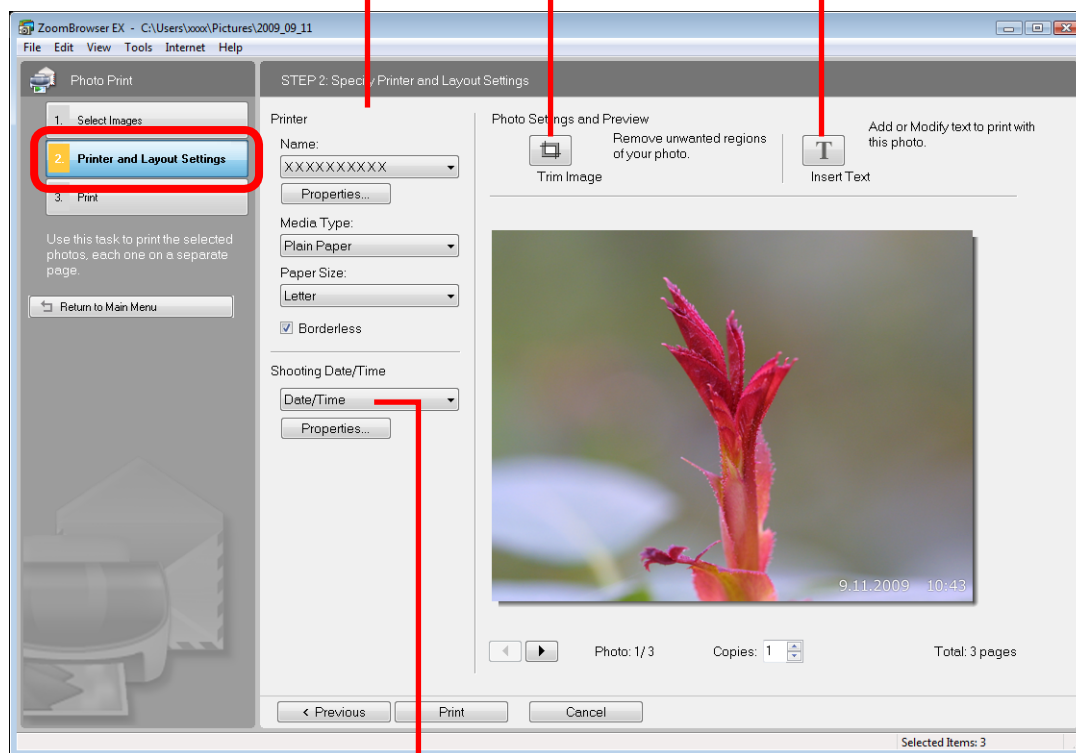


4 Click [2. Printer and Layout Settings] and set the categories as desired.

Sets the printer, paper size and borderless printing settings.

Click here to crop and print a portion of an image.

Click here to insert text onto an image and print.



Sets the shooting date/time imprint settings.

5 Click [3. Print]. Printing will start.

HINT

Printing Using Other Software

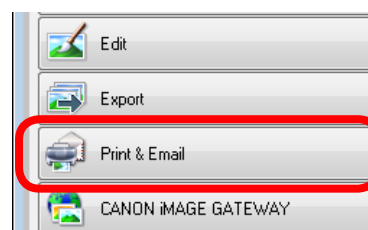
If you have specialized printing software installed on the computer, you can also use it to print the images. Click the [Print & Email] task button in the Main Window, followed by [Print Using Other Software].

Index Print

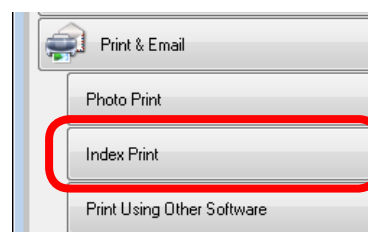
Prints an index of the images.



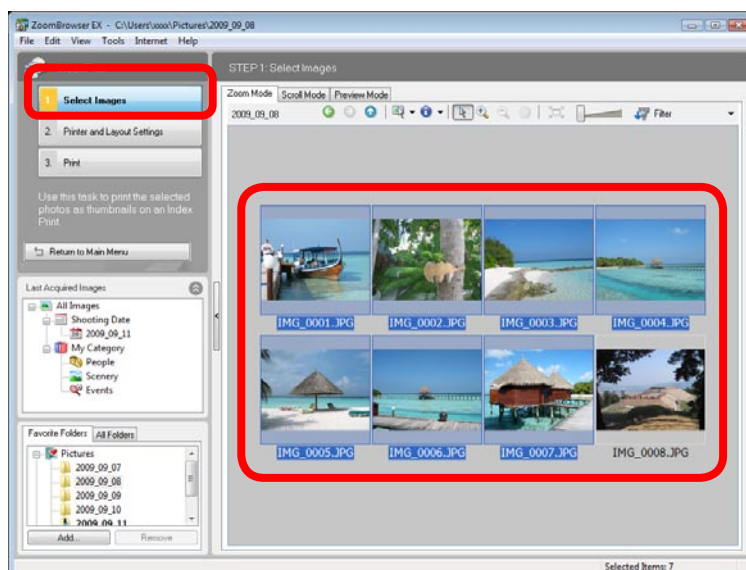
- 1 Click the [Print & Email] task button in the Main Window.



- 2 Click [Index Print].



- 3 Confirm that [1. Select Images] is chosen and select images for printing.



4 Click [2. Printer and Layout Settings] and set the categories as desired.

Sets the printer and paper size settings.

Rotates selected images.

Select an image to rotate or trim.

Click here to crop a portion of the selected image and print it.

Sets the number of rows or columns.

Configures the printing of the shooting information, comments, headers, footers or page numbers.

5 Click [3. Print]. Printing will start.

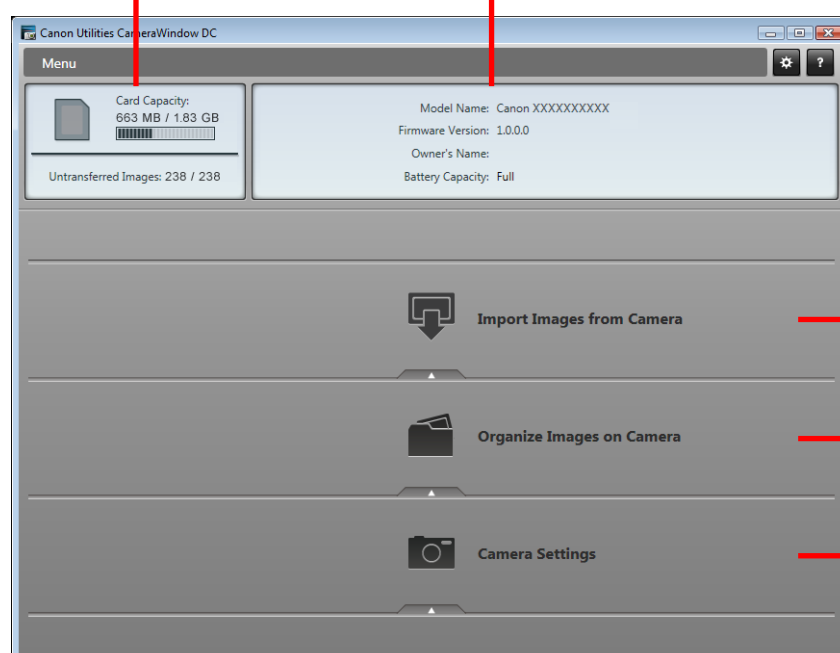
How to Use CameraWindow

First Menu Screen to Open

This screen appears when the camera is connected to your computer. Click each button to display the available options.

Displays in-camera memory card information.

Displays camera information.



Starts operations for transferring images from the camera to your computer.

Starts operations for protecting, rotating, and deleting images. Also transfers images from your computer to the camera.

Starts operations for setting the camera start-up screen, start-up sound, and various camera sounds. For more details refer to "My Camera Settings" (p. 45) in "More Advanced Techniques" (Only displays on camera models that list "My Camera Settings" in the Specifications section of the Camera User Guide).

HINT

Customizing CameraWindow Functions



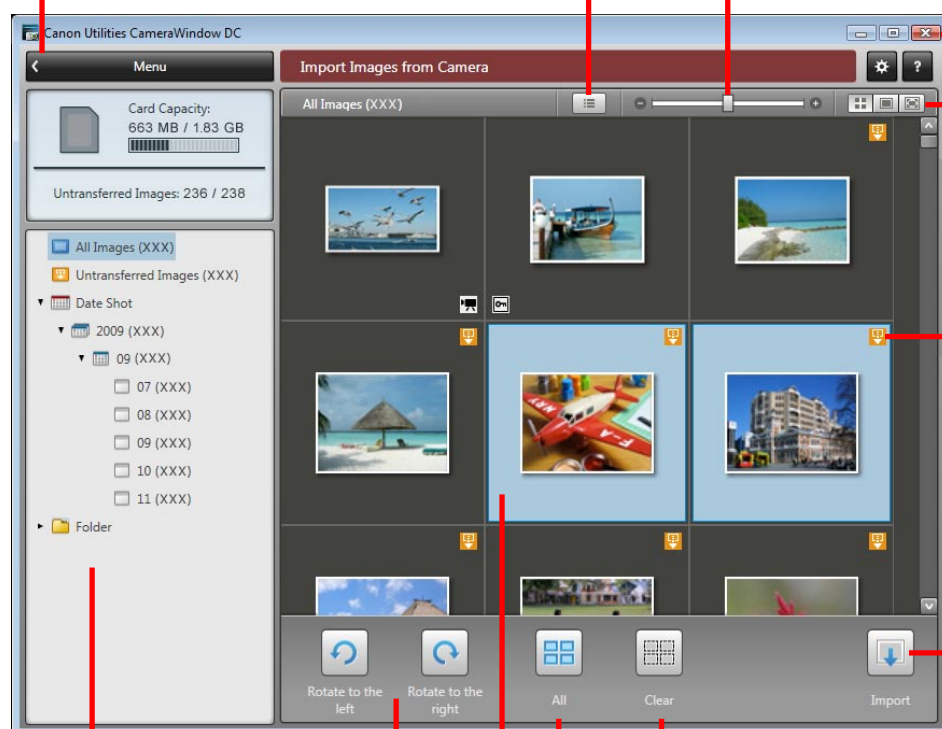
If you click  as shown in the upper right of the screen, you can customize various functions to make CameraWindow easier to use. You can change the automatic transfer settings, the start-up screen that appears when starting CameraWindow, and the transfer destination folder.

Image Transfer Screen


This screen appears when you click [Import Images from Camera] on the Menu screen, then click [Select Images to Import]. Select the image you want to transfer and click  to transfer the image to your computer.

Viewer Window (thumbnail display)


Returns to the Menu screen.




Images on the camera that match the selected filter display in the area to the right.


  Rotates chosen images 90° to the left or right.

The background of chosen images turns blue.

 Turns the shooting date and folder name below the thumbnails on and off (when in thumbnail display).

 Changes thumbnail size (when in thumbnail display).

 Closes CameraWindow.

 Switches between window display modes.


 Thumbnail display

 Preview display

 Full screen display

Double-clicking an image switches to preview display.

This mark appears on images that have not yet been transferred.

 Transfers the image chosen in Viewer Window to your computer.

 Cancels image selection.

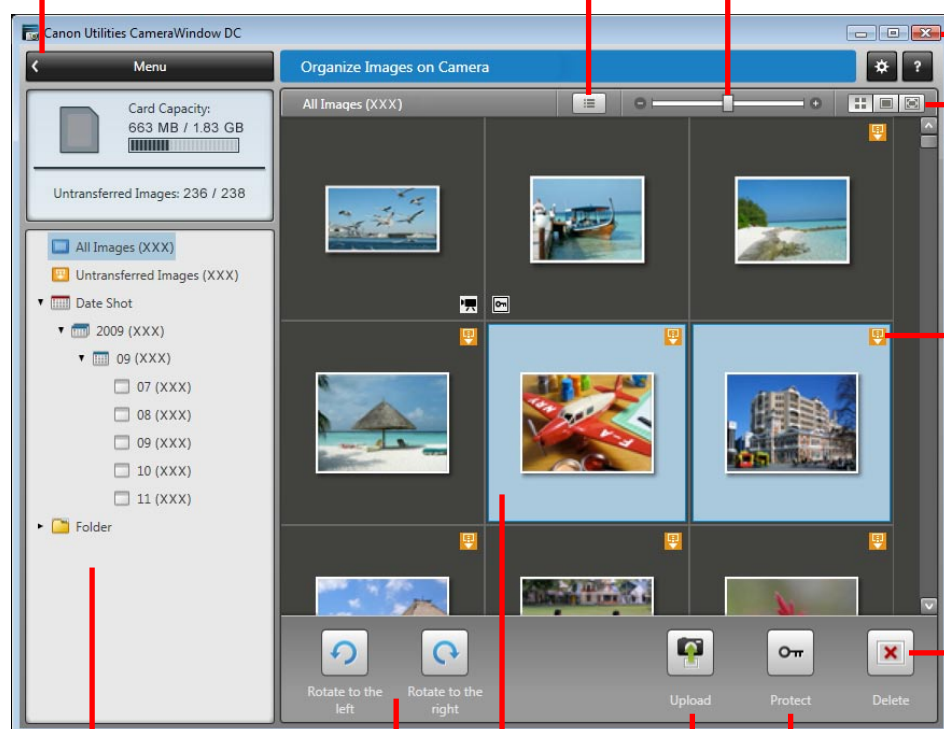
 Selects all images.

Organize Images Screen

This screen appears when you click [Organize Images on Camera] on the Menu screen, then click [Organize Images]. Clicking a folder on the left will display all images within the folder as thumbnails (small images) on the right of the screen.

Viewer Window (thumbnail display)

Returns to the Menu screen.



Turns the shooting date and folder name below the thumbnails on and off (when in thumbnail display).

Changes thumbnail size (when in thumbnail display).

Closes CameraWindow.

Switches between window display modes.



Thumbnail display



Preview display



Full screen display

Double-clicking an image switches to preview display.

This mark appears on images that have not yet been transferred.



Deletes the image chosen in Viewer Window.



Protects/cancels protection for the image chosen in Viewer Window.




Transfers images on your computer to the camera.



Rotates chosen images 90° to the left or right.

The background of chosen images turns blue.

! IMPORTANT

- Clicking  will delete the image from the camera. Exercise adequate caution, as you cannot retrieve the deleted images.

How to Use ZoomBrowser EX

Main Window

This is the main window for performing tasks in ZoomBrowser EX.

Slide Show

Displays the selected images in succession in the window.

Properties

Displays information about a selected image.

View Image

Displays the selected image in the Viewer Window.

Task Buttons

Selects a task to perform.

Last Acquired Image

You can check images by shooting date or My Category.

Search

Performs searches on images.

Delete

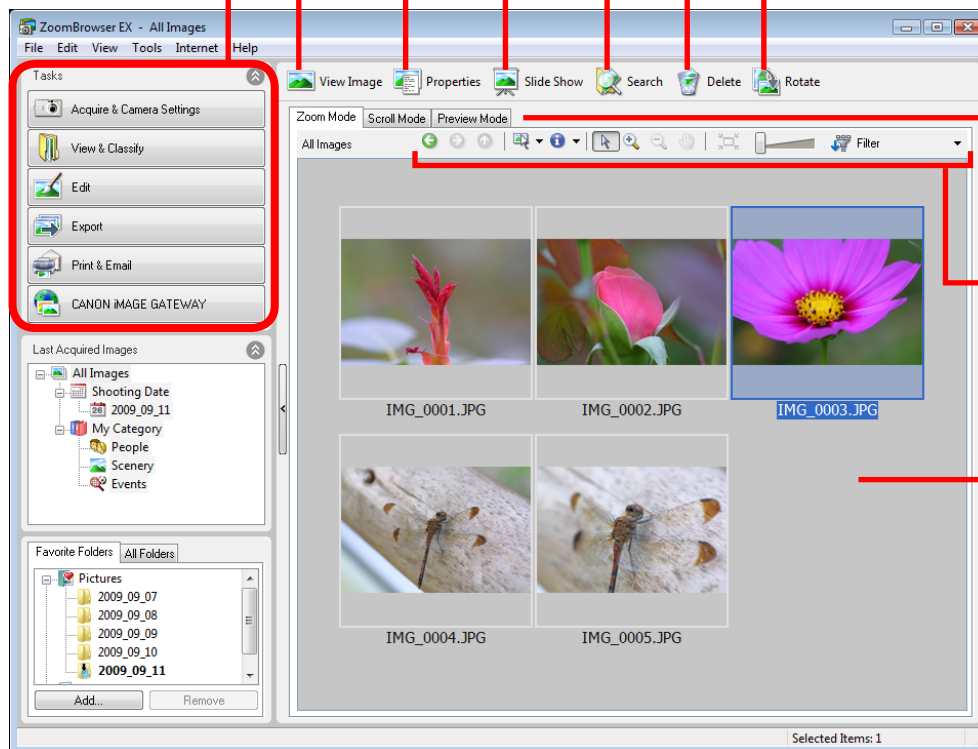
Deletes the selected images or folders.

- Deleted images are sent to the Recycle Bin on the desktop.
- The association between a sound memo and an image cannot be recovered from a file restored from the Recycle Bin.

Rotate

Rotates a selected image.

- Click the [Edit] menu and select [Rotate According to Rotation Information] to rotate the original image as well in the displayed direction.



Display Mode

Selects a display mode for the Browser Area.

Display Control Panel

Configures the settings for displaying images in the Browser Area.

Browser Area

Displays the images in an index list.

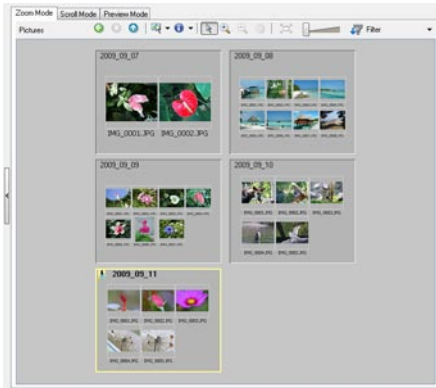
Folder Area

Selects a folder to display.

- You can register folders you use often as Favorite Folders (). Register by clicking [Add]. To delete a folder in the Favorite Folders area, select a folder and click the [Delete] button.

Display Modes

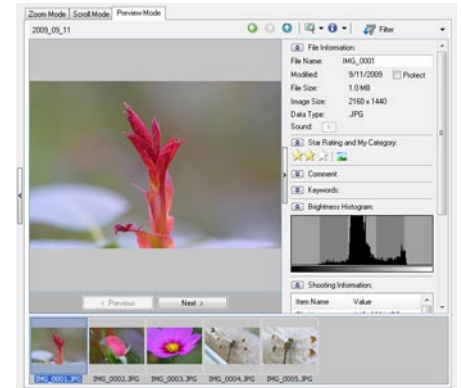
Select a browser area display mode to fit your purposes.



Zoom Mode: suited for surveying many images.



Scroll Mode: allows thumbnails to be viewed at a size suited for easy viewing.




Preview Mode: allows the image information to be read while viewing the image.



HINT

Magnify Thumbnails to Check Images

In zoom mode or scroll mode, positioning the mouse pointer over a thumbnail causes the image to appear at a higher magnification in a Mouse Over window. You can also set the Mouse Over window to not show in the  (Show Information) menu.

Display Control Panel

This panel adjusts the display settings for the Browser Area.

Selection Menu

Click this to select/deselect all images in the Browser Area.

Select Button

Use this to select images in Zoom mode.

Fit to Window

Changes the thumbnail size to fit them into the window.

Display Size

Changes the size of the thumbnail in the Browser Area.

Show/Hide Image Information Menu

Select here to show/hide such image information as the file name or shooting date or rating beneath the thumbnail.

Zoom Button

Use this to zoom in and out on an image.

Scroll Button

Use this when in zoom mode to move the displayed portion of the image (drag inside the browser area).

Filter Tool Menu




Displays only images that correspond to specific conditions.



Browser Area Tasks

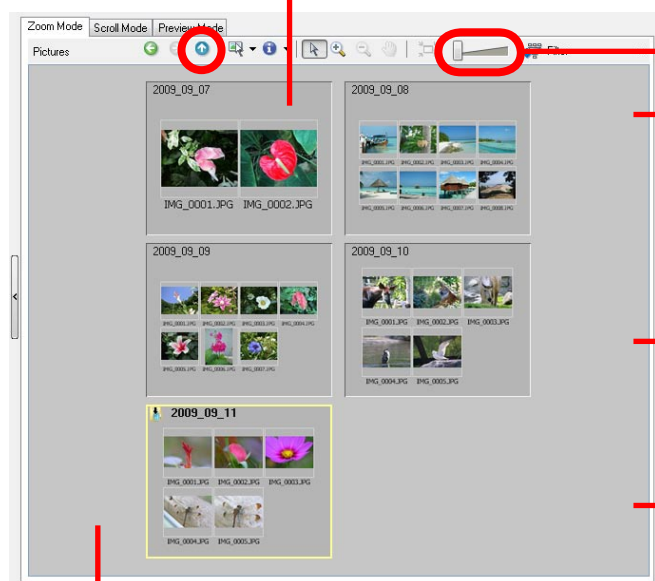
Change the Folder Level

The level of folder displayed can be changed with the following procedures.

- In Zoom mode, position the mouse cursor over the folder and click the  icon when it displays.
- In Scroll or Preview mode, double-click the  icon.
- To advance to a higher folder level, click the  icon.

Change the Display Size


You can change the display ratio (Zoom mode) or thumbnail size (Scroll mode) with the slider.



Select Images

Clicking an image in the Browser Area selects that image. To select multiple images, hold down the [Ctrl] key while clicking images, or hold down the [Shift] key and click a starting and ending image to select a range of adjacent images.

Display Images

Double-clicking an image in the Browser Area (or selecting the image and clicking  (View Image)), displays it in the Viewer Window.

Move, Copy Images

To move an image between folders, drag it over the destination folder and release the mouse button.

To copy an image, hold the [Ctrl] key while releasing the mouse button as above.

You can also use the same procedures to copy images between Windows Explorer and the Main Window.

Create New Folder


To create a new folder in the Browser Area, click the [File] menu and select [New Folder].

HINT

Right-Click Context Menus

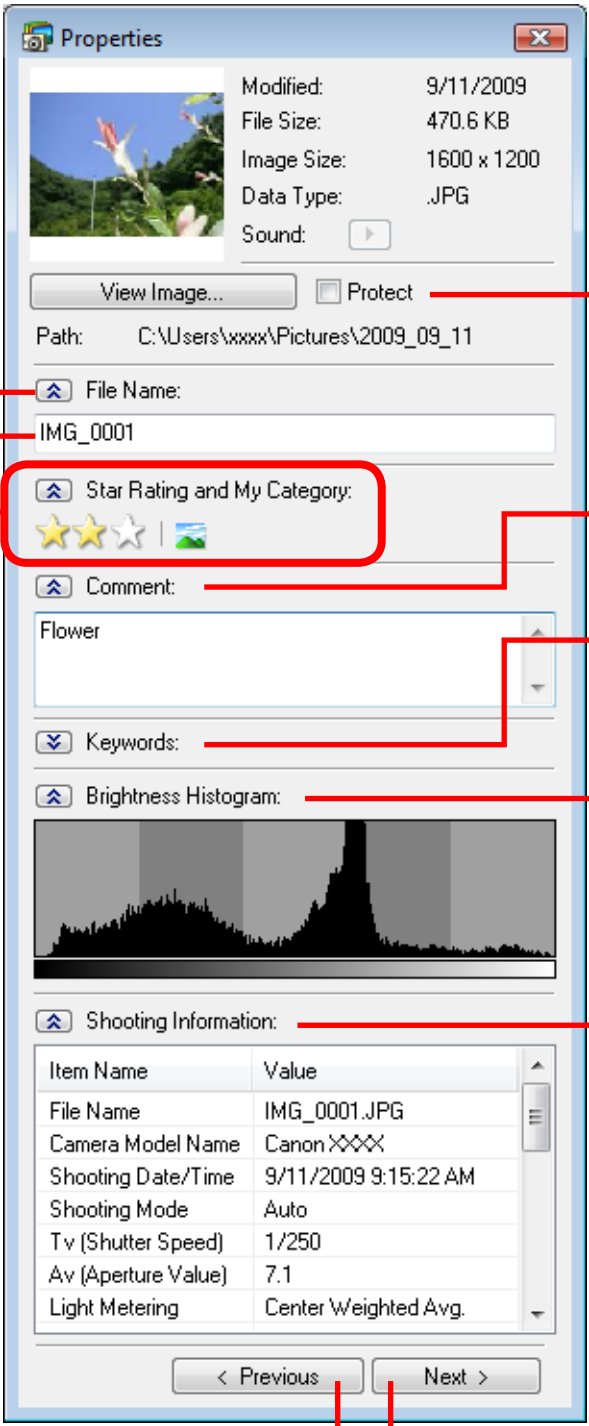
Right-clicking over a window or image displays contextual menus. These menus contain the functions available in the current context as well as other convenient functions. Use the right-click menus to increase your efficiency.

Using the Navigator

If you change the displayed zoom factor in Zoom Mode, a Navigator Window that shows the current position will appear. In the Navigator Window you can change the position by dragging  or clicking inside the window.

Properties Window

The Properties Window displays when you select an image in the Browser Area and click the Properties button. The Properties Window does not display in the Preview Mode.



Shows or hides categories.

File Name
The file name can be changed.

Star Rating and My Category
Sets the rating for an image.
An icon will display if a My Category is set.

Protect
Prevents an image from being overwritten or deleted.

Comment
You can type a comment here.

Keywords
Sets the keywords used in searches.

Brightness Histogram
A graph of the highlights and shadows distribution in an image.

Shooting Information
Displays detailed information, such as the shutter speed and exposure compensation setting. The camera model will determine what information is displayed.

Image Selector Buttons
When multiple images are selected, you can switch between images that display information in the Properties Window.

Properties Window Details:

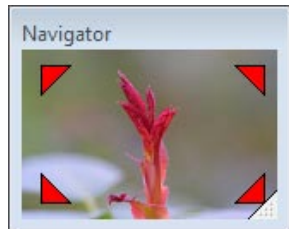
- Modified:** 9/11/2009
- File Size:** 470.6 KB
- Image Size:** 1600 x 1200
- Data Type:** .JPG
- Sound:** [Play button]
- View Image...** [button]
- Protect** [checkbox]
- Path:** C:\Users\xxxx\Pictures\2009_09_11
- File Name:** IMG_0001
- Star Rating and My Category:** [Stars: 3/5] [Category icon]
- Comment:** Flower
- Keywords:** [empty field]
- Brightness Histogram:** [Graph showing distribution]
- Shooting Information:**

Item Name	Value
File Name	IMG_0001.JPG
Camera Model Name	Canon XXXX
Shooting Date/Time	9/11/2009 9:15:22 AM
Shooting Mode	Auto
Tv (Shutter Speed)	1/250
Av (Aperture Value)	7.1
Light Metering	Center Weighted Avg.
- Navigation:** < Previous, Next >

Viewer Window

Double-clicking an image in the Main Window displays it in this window.

Change the display magnification.
Zooming in displays the Navigator window to show the relative position on the image.

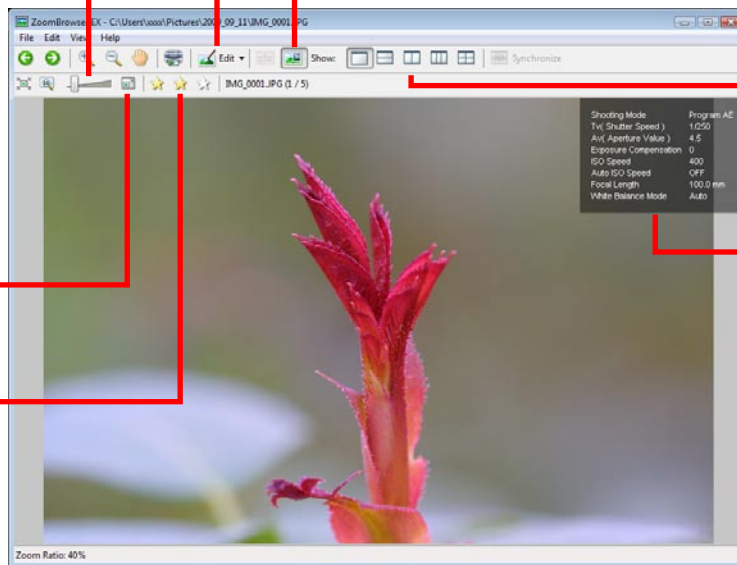


Edit an image.

Display the shooting information.
You can configure the information display by clicking the [Tools] menu and selecting [Preferences].

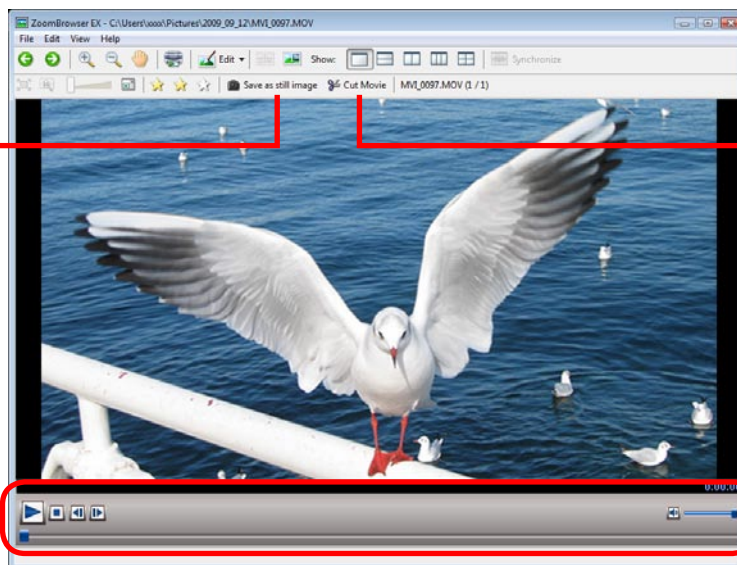
Display at full screen size.

Set the Star Rating.



- The following window will appear when a movie is displayed.

You can extract stills from movies.



You can cut portions at either end of a movie clip.

You can control movie playback and sound volume.

- The [Display Original Image] button will display beneath RAW images in the Viewer Window. Click this button to display the converted image in the Viewer Window.

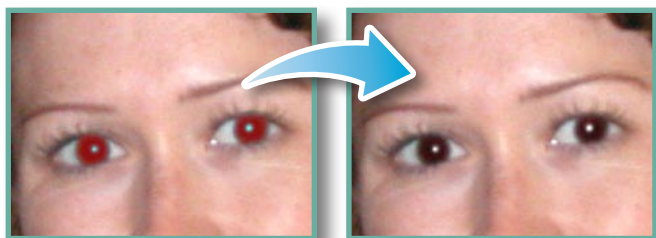
Editing Images

! IMPORTANT

- The original image will be overwritten after an image is edited unless the file name is changed before saving it. To preserve the original image intact, change the file name when saving the edited image.
- This section introduces the procedures started by clicking the Edit task button. Images can also be edited in a similar way by clicking the [Edit] button in the Viewer Window.

Red Eye Correction

Restores eye appearance to the original color when light reflected from the flash makes them appear red.



- Click [Start] when Auto mode is selected.
- Switch to Manual mode if Auto mode cannot correct the image, and select the location of the eye to correct.

Procedures

- 1 Select a task from the left side of the window (p. 8): [Edit] and [Edit Image].
- 2 Select an image.
- 3 [2. Select Editing Tool]
- 4 [Red Eye Correction]
- 5 [3. Finish]

- Movies and RAW images cannot be edited.

Auto Adjustment

Automatically adjusts the image color balance and brightness.



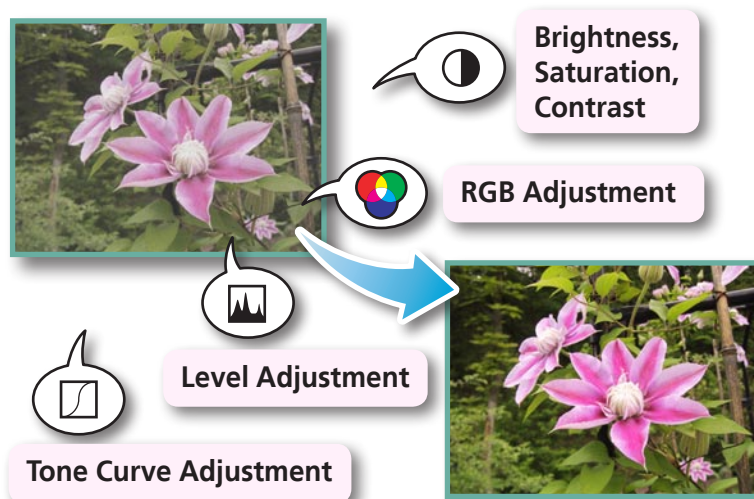
Procedures

- 1 Select a task from the left side of the window (p. 8): [Edit] and [Edit Image].
- 2 Select an image.
- 3 [2. Select Editing Tool]
- 4 [Auto Adjustment]
- 5 [3. Finish]

- Movies and RAW images cannot be edited.

Color/Brightness Adjustment

You can adjust image color balance and brightness using a variety of methods.



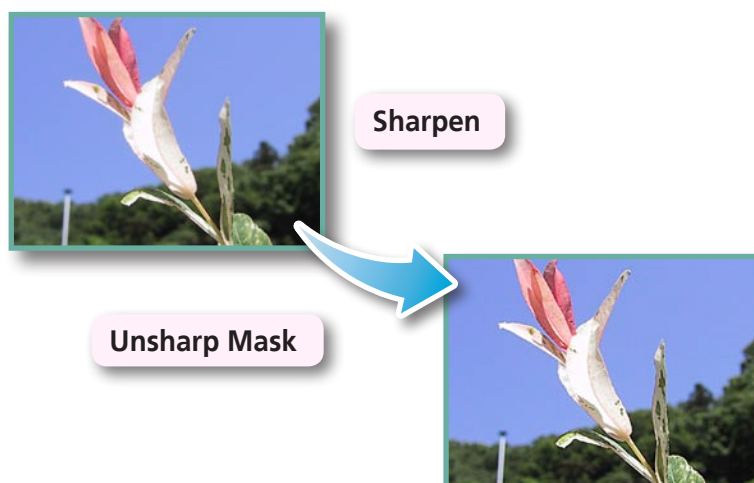
Procedures

- 1 Select a task from the left side of the window (p. 8): [Edit] and [Edit Image].
- 2 Select an image.
- 3 [2. Select Editing Tool]
- 4 [Color/Brightness Adjustment]
- 5 [3. Finish]

- Movies and RAW images cannot be edited.

Adjusting Sharpness—Emphasizing Outlines

Makes images appear sharper by emphasizing the outlines of subjects, such as people and objects.



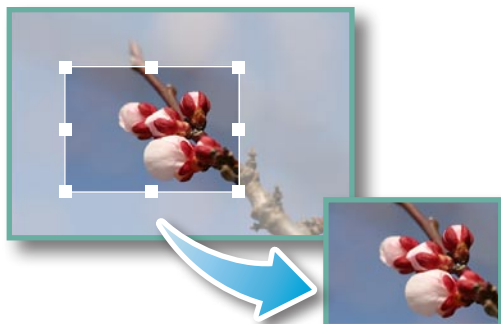
Procedures

- 1 Select a task from the left side of the window (p. 8): [Edit] and [Edit Image].
- 2 Select an image.
- 3 [2. Select Editing Tool]
- 4 [Sharpness]
- 5 [3. Finish]

- The Unsharp Mask [Radius] is the size at which the outline is detected and the [Threshold] is the standard value at which the outline is determined.
- Movies and RAW images cannot be edited.

Trimming–Cropping a Portion of an Image

Use this to delete unnecessary portions of the image and leave only the necessary portions.



Procedures

- 1 Select a task from the left side of the window (p. 8): [Edit] and [Edit Image].
- 2 Select an image.
- 3 [2. Select Editing Tool]
- 4 [Trim]
- 5 [3. Finish]

- You can also input values or an aspect ratio to specify the trim area.
- Movies and RAW images cannot be edited.

Inserting Text

Use this to insert text onto the image.



Procedures

- 1 Select a task from the left side of the window (p. 8): [Edit] and [Edit Image].
- 2 Select an image.
- 3 [2. Select Editing Tool]
- 4 [Insert Text]
- 5 [3. Finish]

- Placing a checkmark in the [Antialias] box causes the text edges to blend in with the underlying image.
- Movies and RAW images cannot be edited.

Using Other Editing Software

If you register another image editing program with ZoomBrowser EX in advance, you can use that software to edit an image selected in ZoomBrowser EX.

Registering an Editing Program

Register the program so it can be started from within ZoomBrowser EX.



ZoomBrowser EX

Other Image Editing Program



Procedures

- 1 Select a task from the left side of the window (p. 8): [Edit] and [Edit Image].
- 2 Select an image.
- 3 [2. Select Editing Tool]
- 4 [Edit with external image editor]
- 5 [Manage List]

Editing Images with a Registered Editing Program



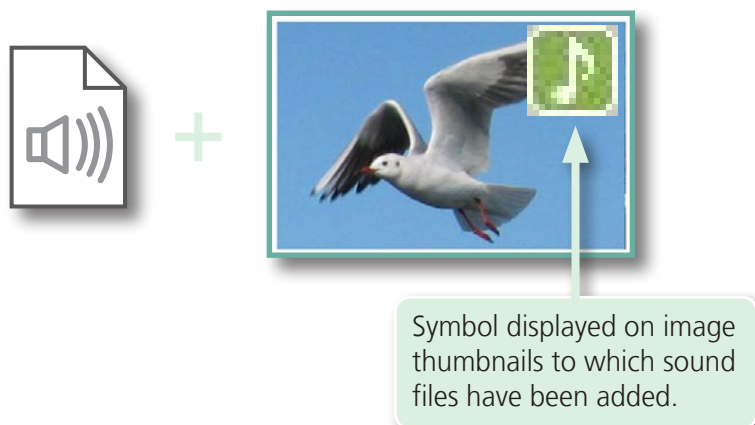
Procedures

- 1 Select a task from the left side of the window (p. 8): [Edit] and [Edit Image].
 - 2 Select an image.
 - 3 [2. Select Editing Tool]
 - 4 [Edit with external image editor]
 - 5 [3. Finish]
- The shooting information may be lost from images recorded with the camera and then processed and saved with another image editing program.
 - Movies and RAW images cannot be edited.

Attaching Sounds

You can add sound effects or background music to images and play back the sounds.

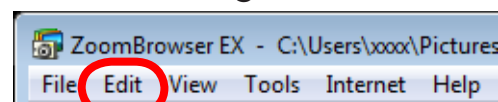
Adding Sound



Procedures

1 Select an image.

2



[Edit] and [Add/Remove Sound].

- WAVE type sound files (extension ".wav") can be attached to images.
- Attaching a sound file to an image results in the selected sound file being copied into the same folder as the image file.

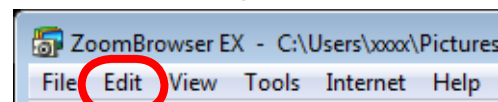
Playing an Image Sound File



Procedures

1 Select an image.

2



[Edit] and [Play Sound].

Creating Panoramic Images–PhotoStitch

You can create wide panoramic images by moving the camera slightly when recording a series of images and merging them into one image.



Use the PhotoStitch program to create panoramic images.



Procedures

1 Select a task from the left side of the window (p. 8): [Edit] and [Stitch Photos].

- Movies and RAW images cannot be edited.



HINT

Using the Stitch Assist Mode

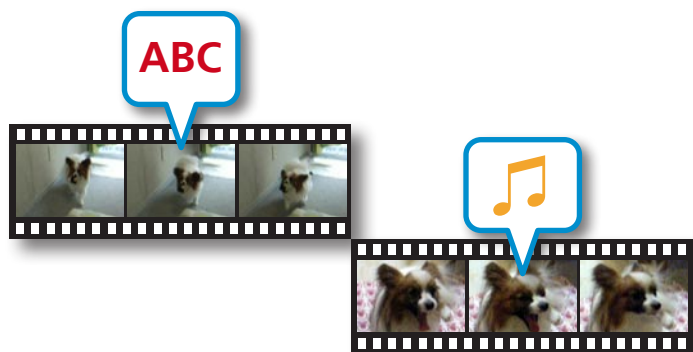
If you use the camera's Stitch Assist mode to record the images, PhotoStitch can automatically detect the image order and merge direction, making it easier to merge the images. (Some camera models may not feature the Stitch Assist mode.)

! IMPORTANT

- If an "insufficient memory" message appears, try one of the following methods to solve the problem.
 - Close all other applications other than PhotoStitch.
 - Reduce the size or number of images to combine.
 - In the [Save] tab, select [Adjust image...], then in "Saved Image Size" reduce the size.

Editing Movies

You can create original movies by linking movie clips and still images. You can even add titles and other text, background music and various special effects to the movie.



Procedures

- 1 Select a task from the left side of the window (p. 8): [Edit] and [Edit Movie].

- When editing movies (MOV) with a size of 1280 x 720, up to 15 files can be joined together to create a longer movie.

HINT

Recordable Movie Length

- The length of movies you can save when you select MOV with [Save image type] is shown at right. A message will appear if you try to save a longer movie. Reduce the length or size of the movie if this happens.

Movie Size	Max. Length
1920x1080	10 minutes
1280x720	20 minutes
640x480	30 minutes
320x240	60 minutes

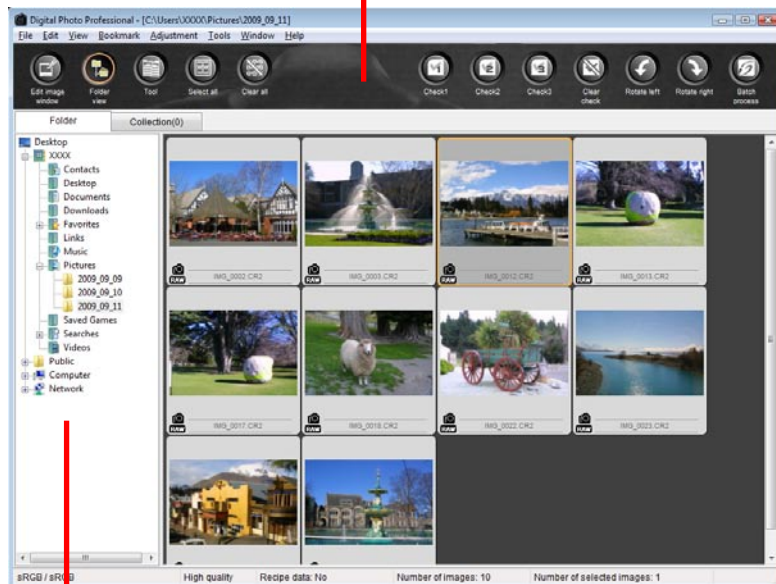
! IMPORTANT

- Movies edited with this function cannot be transferred back to the camera.
- Saving movies takes time, especially MOV type movies selected with [Save image type] takes a considerable amount of time.
Ex: A one minute 1280x720 movie takes approximately 9 minutes to save.

Converting RAW Images–Digital Photo Professional

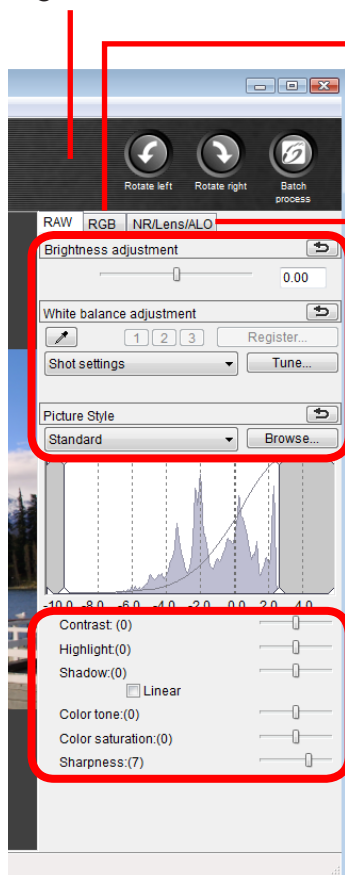
You can convert RAW images to JPEG and TIFF images.

Digital Photo Professional's Main Window



Selects folders containing images.

Digital Photo Professional's Tool Palette



You can adjust all three RGB channel levels together or separately with the Tone Curve.


Reduces noise that occurs when shooting night time scenery, or when shooting at a high ISO speed.

Adjusts the brightness, white balance and picture style.

Adjusts the contrast, color tone, color saturation and sharpness.



Procedures

- 1 Select a task from the left side of the window (p. 8): [Edit] and [Digital Photo Professional Process RAW Images].
- 2 Select a RAW image in Digital Photo Professional's Main Window.
- 3 Click  (Edit image window).
- 4 Adjust the image brightness and white balance in the tool palette.
 - The modified contents (the information for image processing requirements) are saved along with the image as a "recipe".
 - With Digital Photo Professional, you can adjust images to achieve the best results for your desired scene or subject by specifying a picture style.
 - The items available to be modified differ depending on the camera model.
- 5 [File] and [Convert and save].
 - After setting the file type, size, and destination folder, click [Save].

- Only RAW images compatible with Digital Photo Professional can be processed.
- Ensure that you use the RAW image conversion software included with your camera.

To print, using Digital Photo Professional, select an image in the Main Window, then click the [File] menu and select the print function. Digital Photo Professional offers the following printing methods.

Printing Method	Description
Single Print	Automatically sets the layout for printing a single image on a single page.
Detailed Setting	Gives you the freedom to set the layout, add titles, or print with shooting information.
Contact Sheet	Prints a line-up of multiple images on one page (also allows you to select the number of images, layout, and add titles).

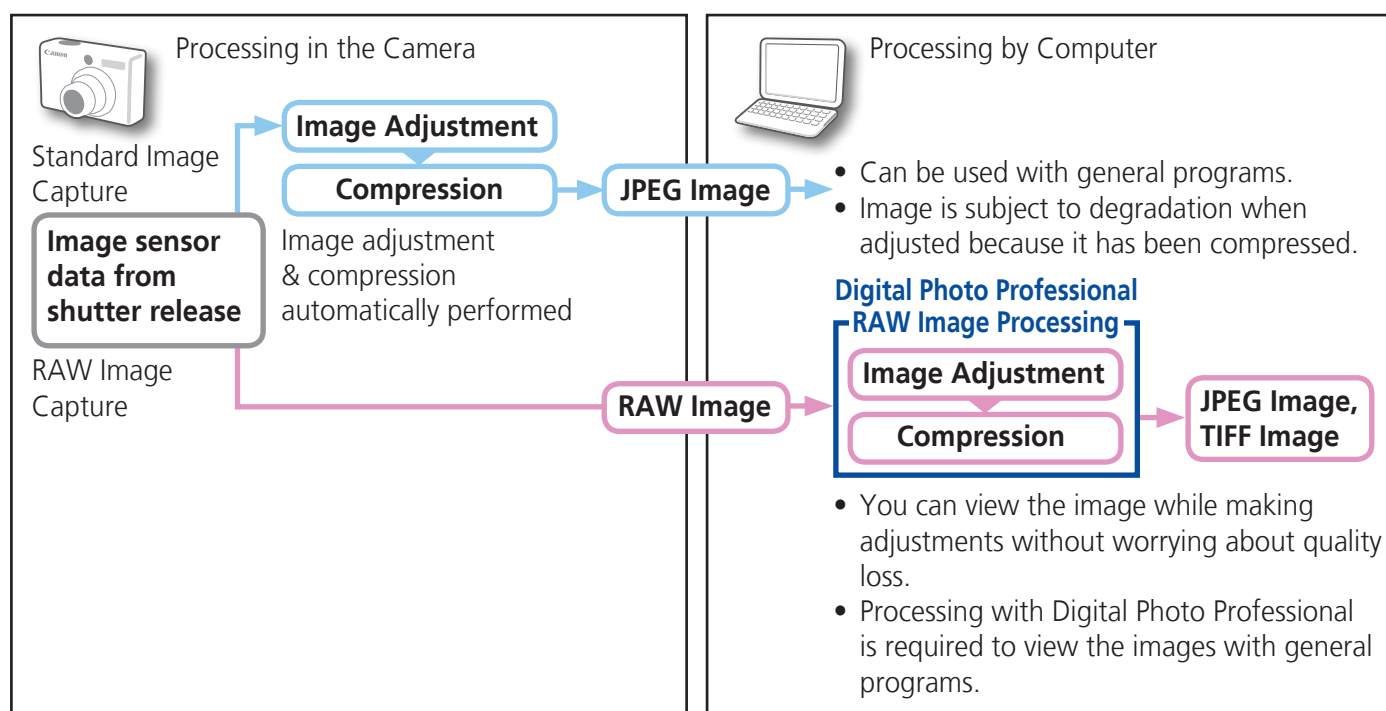
! IMPORTANT

- RAW images can only be captured on certain camera models that list "RAW" as one of the data types included in the "Specifications" section of the *Camera User Guide*.
- Only RAW images compatible with Digital Photo Professional can be processed. Check the Data Type item of the Specifications section of the *Camera User Guide* for compatibility.
- For a more detailed explanation of operating procedures, download the Digital Photo Professional manual (PDF format) from the Canon website.

💡 HINT

About RAW Images

RAW images contain the data captured by the camera's image sensor without modification. Since they contain raw data that differs from the usual JPEG images by not having any image adjustment or compression processing performed in the camera, they can be converted on a computer with a lossless process.



Exporting

Changing Image (Stills) Sizes and Types

You can change an image's size and format when exporting it so that it can be published on the Internet or attached to an email message.



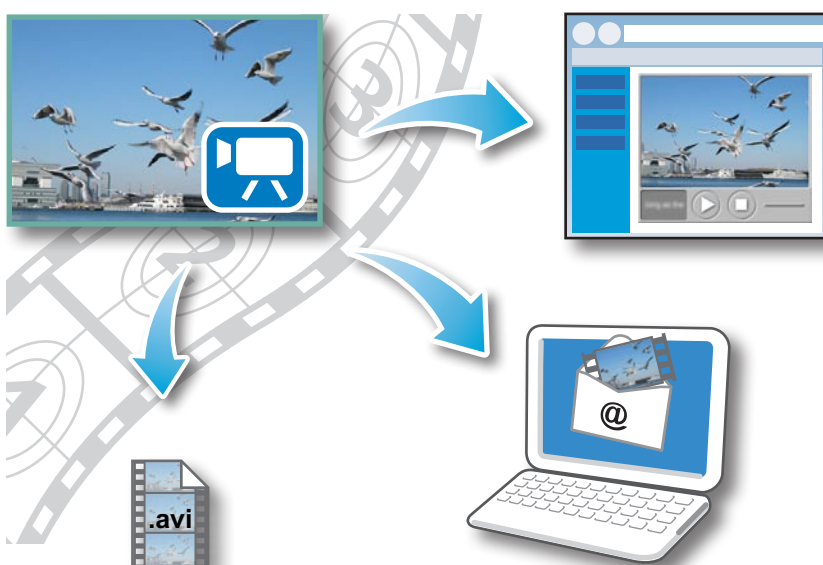
Procedures

1 Select a task from the left side of the window (p. 8): [Export] and [Export Still Images].

- You will lose the shooting information if you save images as a type other than JPEG.

Changing Movie Sizes and Types

You can change a movie's size and format when exporting it so that it can be published on the Internet or attached to an email message.



Procedures

1 Select a task from the left side of the window (p. 8): [Export] and [Export Movies].

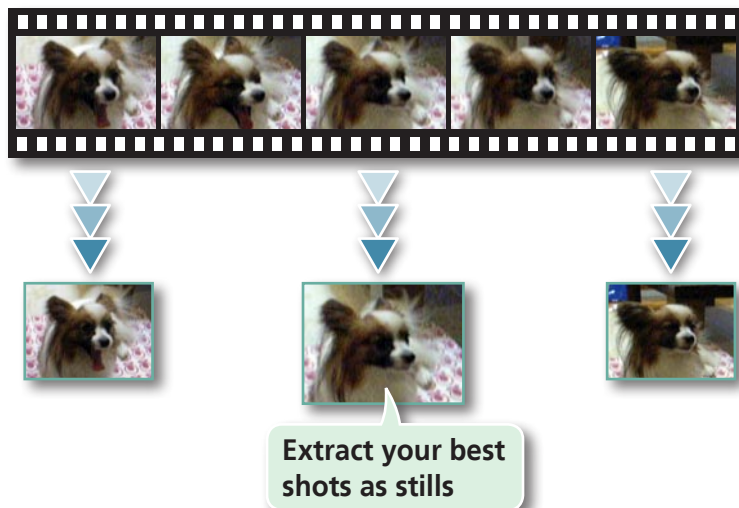
- You can also use this function to rotate movies.

! IMPORTANT

- Exporting movies may take a considerable amount of time.

Extracting Stills from Movies

You can extract and save stills from your favorite frames recorded in a movie.

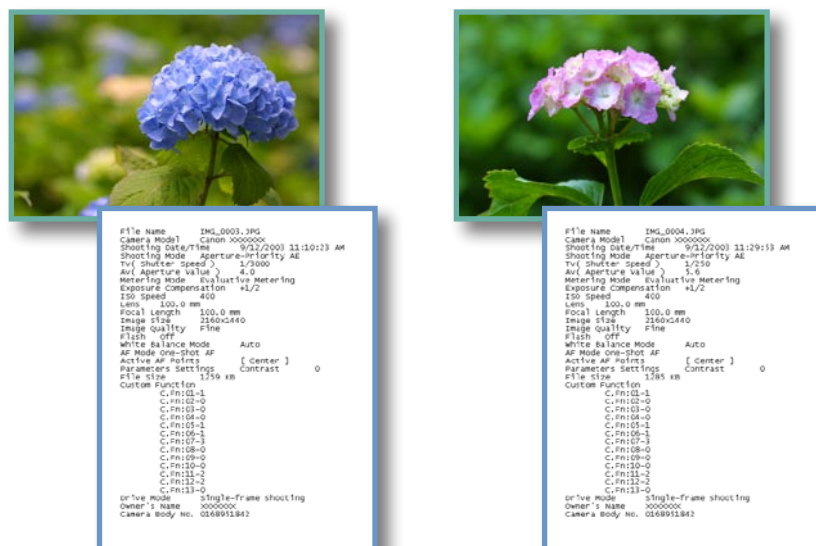


Procedures

- 1 Select a task from the left side of the window (p. 8): [Export] and [Extract frames from a movie].

Exporting Shooting Information

You can export the shooting information recorded with an image, such as the shutter speed and exposure, as a text file.



Ascertain the causes of failed photos or compare the settings for several images.



Procedures

- 1 Select a task from the left side of the window (p. 8): [Export] and [Export Shooting Properties].

Creating Computer Screen Saver Images

You can export images to serve as computer screen savers.



Procedures

- 1 Select a task from the left side of the window (p. 8): [Export] and [Export as a Screen Saver].

Creating Computer Wallpaper Images

You can export images to serve as computer wallpaper images.

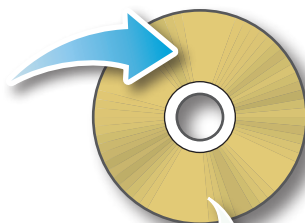


Procedures

- 1 Select a task from the left side of the window (p. 8): [Export] and [Export as a Wallpaper].

Saving to CDs

You can save images along with their shooting information to CD-R/RW discs.




Back up important images or distribute your vacation photos on discs.

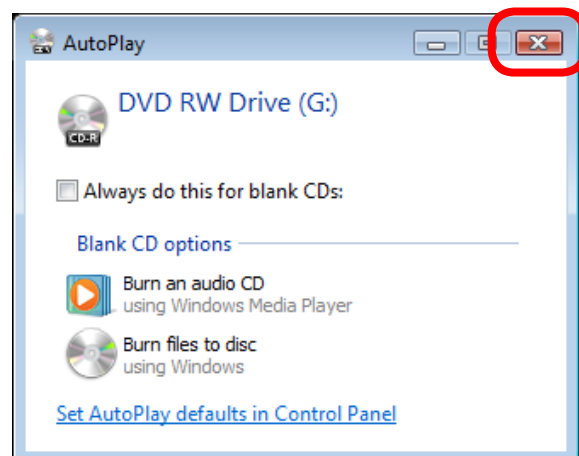


Procedures

- 1 Select a task from the left side of the window (p. 8): [Export] and [Backup to CD].

! IMPORTANT

- This function can only be used with computers that satisfy the following requirements:
 - Equipped with a CD-R/RW drive as standard equipment
 - Writing to the CD-R/RW drive operates correctly with Windows
- If a window similar to that shown to the right appears when a new CD-R/RW disc is placed in the drive, click  ([Cancel] when using Windows XP) to close the window.



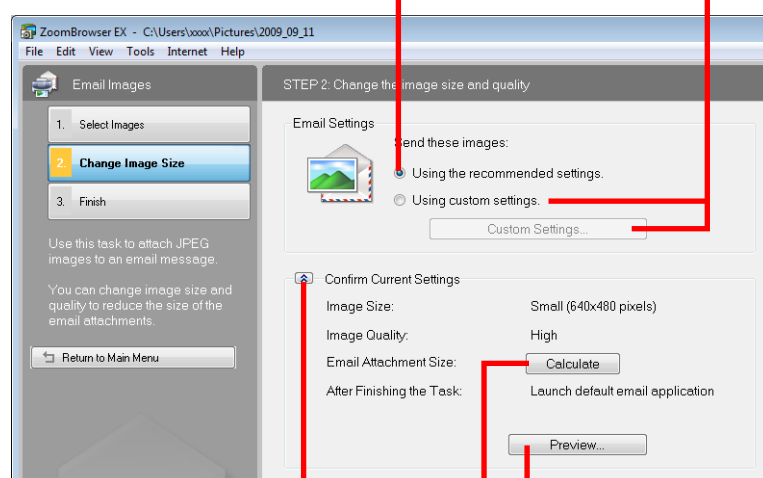
Email

Attaching Images to Email

You can send images as email file attachments.

Click here for most images.

Click here when you want to change the image size or image quality settings, then click [Custom Settings] to change settings.



Click here to check the options currently set.

Click here to preview the compressed image.

Click here to check what the actual compressed file size will be.



Procedures

- 1 **Select a task from the left side of the window (p. 8): [Print & Email] and [Email Images].**
- 2 **Select an image to send.**
 - You can also select multiple images or all images in a folder.
- 3 **Click [2. Change Image Size]**
 - You can change the image size and quality settings.
- 4 **Click [3. Finish]**
 - The mail software will start, and the send screen will appear. The selected image will appear as an attached file.
 - In [Custom Settings], if [Save to Folder] is selected in "After Finishing the Task", the selected images will be saved in the indicated destination folder.

HINT

Automatic Start-up Settings for E-mail Software

- When using Windows Vista, configure the settings in your e-mail software. For example, you can configure Windows e-mail by starting e-mail, then clicking the [Tools] menu, followed by [Options], [Default Messaging Programs], [This application is not the default Mail handler], and [Make Default]. When using Windows XP, settings can be configured by starting the Internet Explorer program, and clicking the [Tools] menu, followed by [Internet Options], [Programs] tab, and the [E-mail] pull-down menu.

IMPORTANT

- **The e-mail's MAPI client must be preset for the e-mail software to start automatically.**
- **If the e-mail software does not start automatically, first save the images to your computer, then start your e-mail software to attach and send the images. The destination folder for saved images can be set with [Custom Settings].**



Slide Shows

Viewing Images in Slide Shows

A multiple selection of images can be shown at full size on the screen in succession as a slide show.

You can freely configure the transition effects, information displayed and display time settings.



Procedures

- 1 Select a task from the left side of the window (p. 8): [View & Classify] and [View as a Slide Show].

HINT

Slide Show Button Functions

The following buttons appear at the bottom of the screen while a slide show is playing.

You can set the Star Rating for an image while it is displayed.



After the slide show, the images you clicked during the show remain selected.

Rewind

Pause

Forward

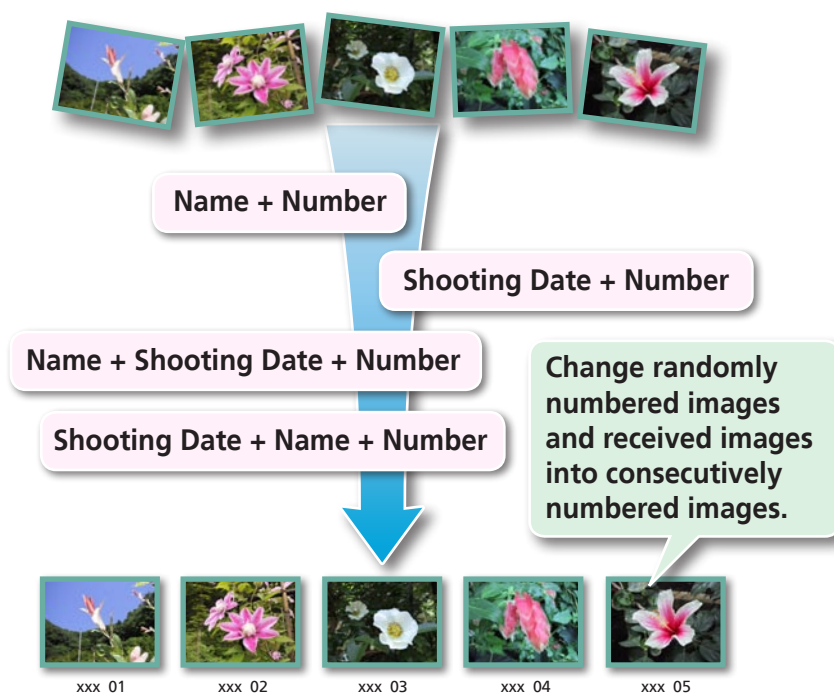
After the slide show, the images you clicked during the show appear in a printing window.

Stops the slide show.

Image Management

Changing File Names in Batches

You can change the file names of multiple images in one procedure.



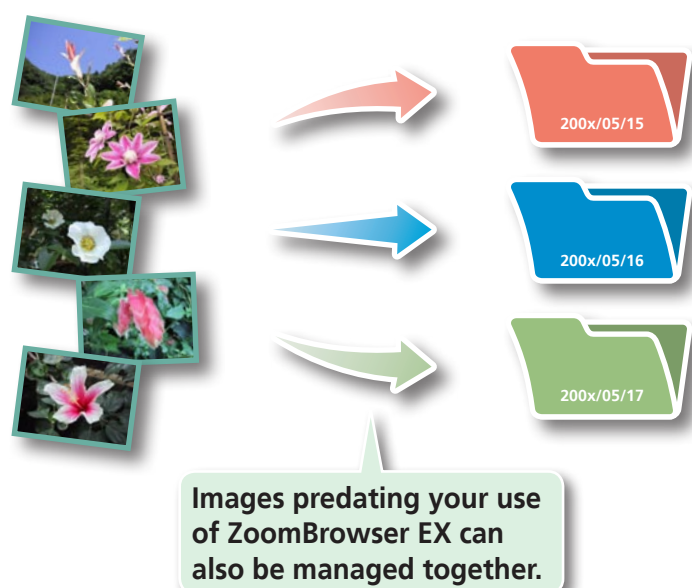
Procedures

1 Select a task from the left side of the window (p. 8): **[View & Classify]** and **[Rename Multiple Files]**.

- You can change individual file and folder names by clicking the [File] menu and selecting [Rename] or by clicking on the file name in Preview mode.
- Changing the image name in ZoomBrowser EX also changes the actual file name on the disk.

Sorting Images into Folders by Shooting Date

You can sort images into folders by their shooting dates.



Procedures

1 Select a task from the left side of the window (p. 8): **[View & Classify]** and **[Classify into Folder]**.

Configuring Image Information Settings

Setting Star Ratings

You can set the Star Ratings used in searching and displaying images in the index list.



Procedures

1

Zoom Mode Scroll Mode **Preview Mode**

Switch to [Preview Mode].

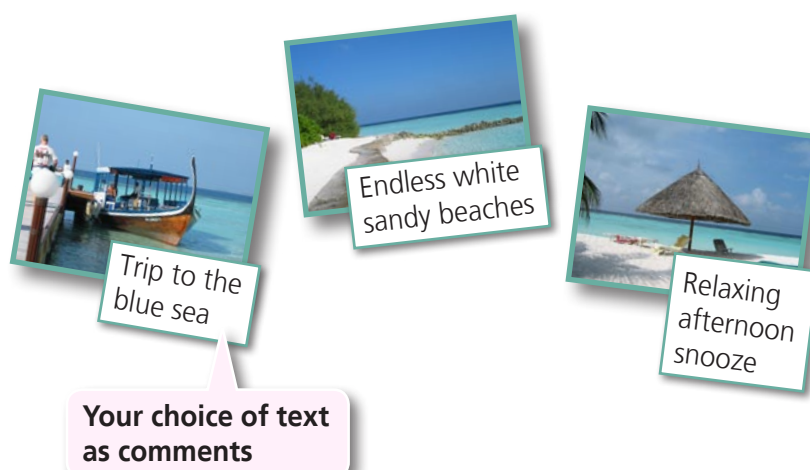
2

Set [Star Rating].

- You can also set the Star Ratings by accessing the [Edit] menu, the Properties Window or the Viewer Window.

Inserting Comments

You can freely insert your choice of text as Comments.



Procedures

1

Zoom Mode Scroll Mode **Preview Mode**

Switch to [Preview Mode].

2

Insert [Comment].

- Comments can also be managed in the Properties Window.

Assigning Keywords

You can set Keywords for use in image searches.



Procedures

1 Zoom Mode Scroll Mode **Preview Mode**

Switch to [Preview Mode].

2 **Insert [Keywords].**

- Keywords can also be managed from the [Tools] menu or Properties Window.
- To add keywords, click the [Tools] menu and select [Manage Keywords].

HINT

About Image Information

This chart shows the information other than shooting information that can be added to images.

Information Type	My Category	Star Ratings	Comments	Keywords
Content	Categories such as People, Scenery, etc.	Categorized on a basis of 3 rankings: ★, ★★, ★★★	Text input without restriction regarding the shooting circumstances or associated memories.	Selections are made from a list (editable) of keywords, such as the photographic subject, place or action.
Configuration Method	Configured in Camera	Configured in ZoomBrowser EX		
Used in Searches	—	○	○	○
Used as Filter Criteria	○	○	—	—
Display beneath Thumbnail	○	○	○	—

Categories displayed beneath thumbnails can be selected by clicking  in the Display Control Panel.

Searching, Filtering and Sorting Images

Searching Images

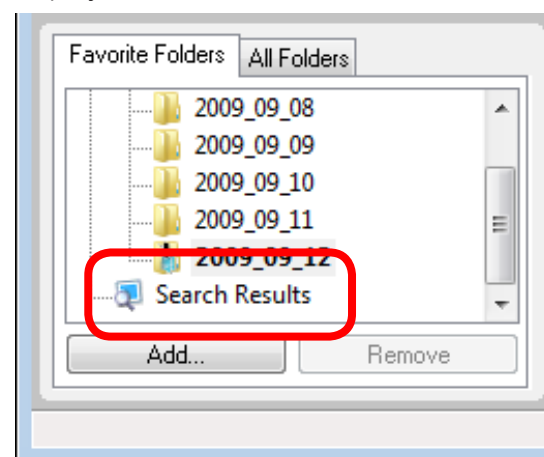
You can search images using parameters extracted from the information associated with them.



Procedures

- 1 Select a task from the left side of the window (p. 8): [View & Classify] and [Search].

- After a search, the correlated images display in the [Search Results] folder.



HINT

Tasks Related to Search Results

You can select images in the [Search Results] folder and perform operations on them, such as printing or copying them to other folders.

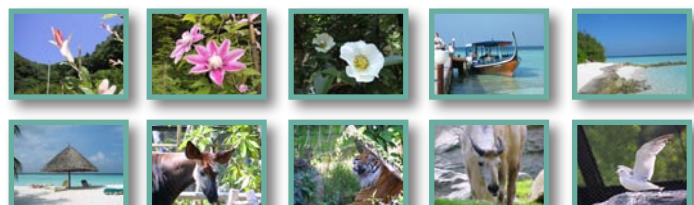
IMPORTANT

- Please note that deleting an image from the [Search Results] folder deletes the original image. Use caution in deleting items from this folder.



Filtering Images

You can use filters to display only images meeting the selected parameters in the Browser Area.



Star Ratings

My Category

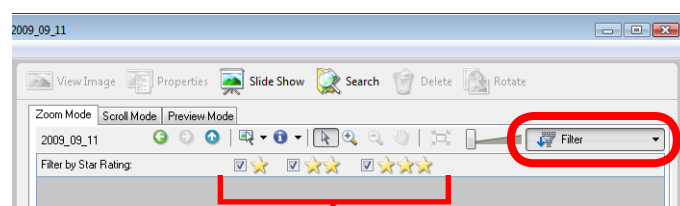


Procedures

1

Filter

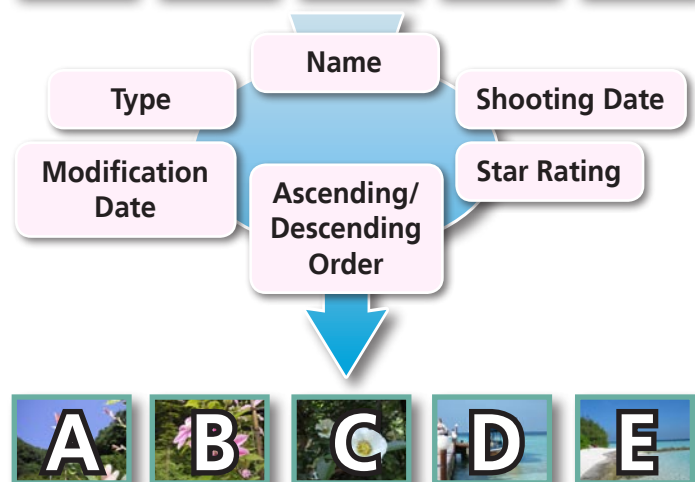
[Filter]



This section is used to specify the filter criteria.

Sorting Images

You can sort images in the Browser Area based on the specified parameters.



Procedures

1

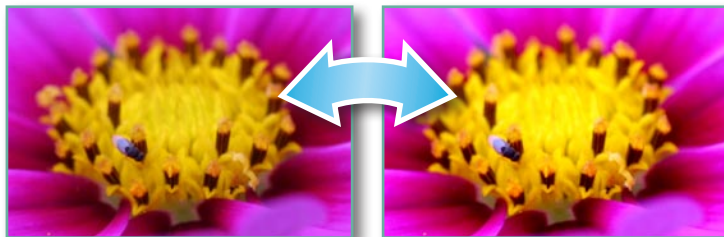
ZoomBrowser EX - C:\Users\xxxx\Pictures
File Edit **View** Tools Internet Help

[View] and [Sort by].







Comparing Images

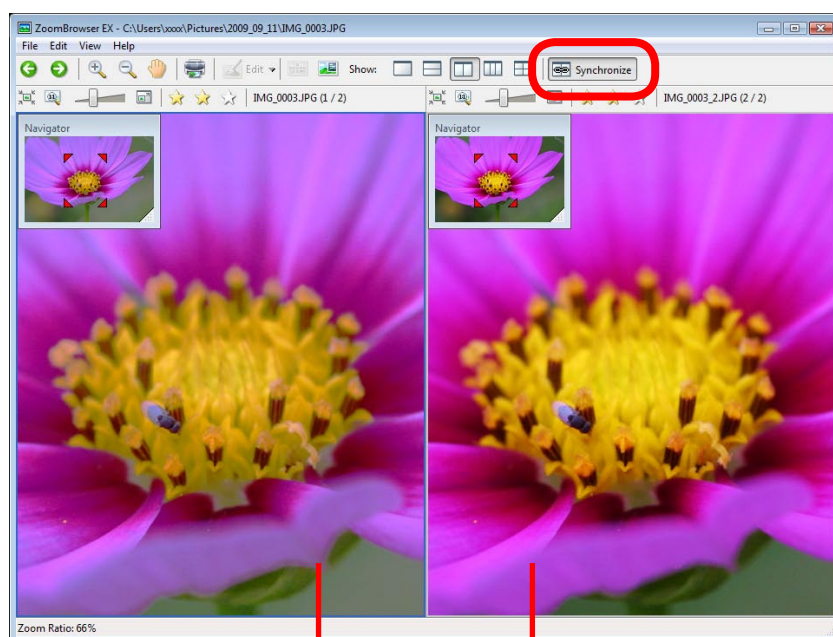
Comparing Multiple Images

When a good photo opportunity arises, you can shoot the same subject using different shutter speeds and exposures. In ZoomBrowser EX, it is easy to compare images so that minute differences can be detected.



Procedures

- 1 Select several images to compare.
- 2 Click  [View Image].
- 3 Select , ,  or  in the Viewer Window.
- 4 Click  [Synchronize].



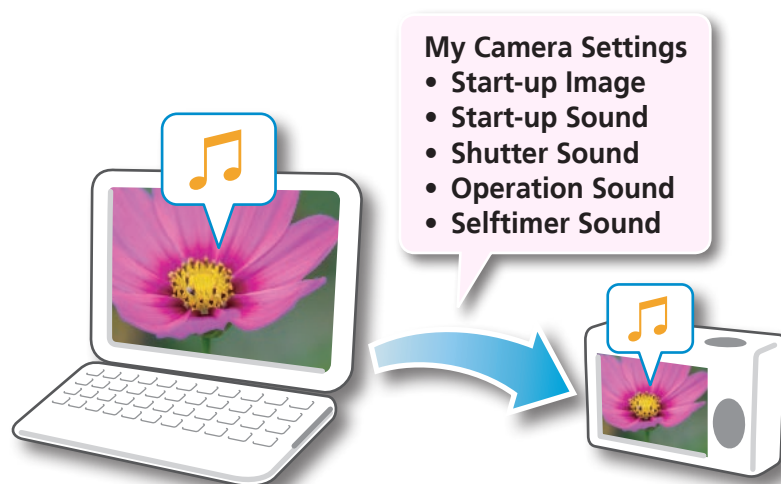
- Selecting [Synchronize] causes actions such as increasing/reducing the magnification level or scrolling around the image to apply to all of the selected images in lock step, making it easy to check minute details of focus, coloring and other image characteristics.

Actions performed on an image, such as scrolling or changing the magnification, are performed on the other image as well.

My Camera Settings

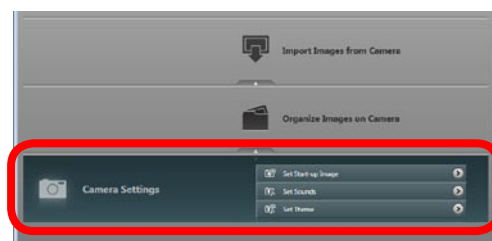
Changing the Shutter Sound and Start-Up Image

The camera's start-up image, start-up sound, shutter sound, operation sound and self-timer sound are collectively referred to as My Camera Settings. You can register your own custom images and sounds as the My Camera Settings.



Procedures

- 1 Connect the camera to the computer.
- 2 Turn on the camera power, and set it to playback mode.
- 3 Select [Downloads Images From Canon Camera using Canon CameraWindow].
Select [Canon CameraWindow] when using Windows XP.
- 4 [Camera Settings]



Select the desired item from the following and make settings.

- ▶ [Set Start-up Image]
- ▶ [Set Sounds]
- ▶ [Set Theme]

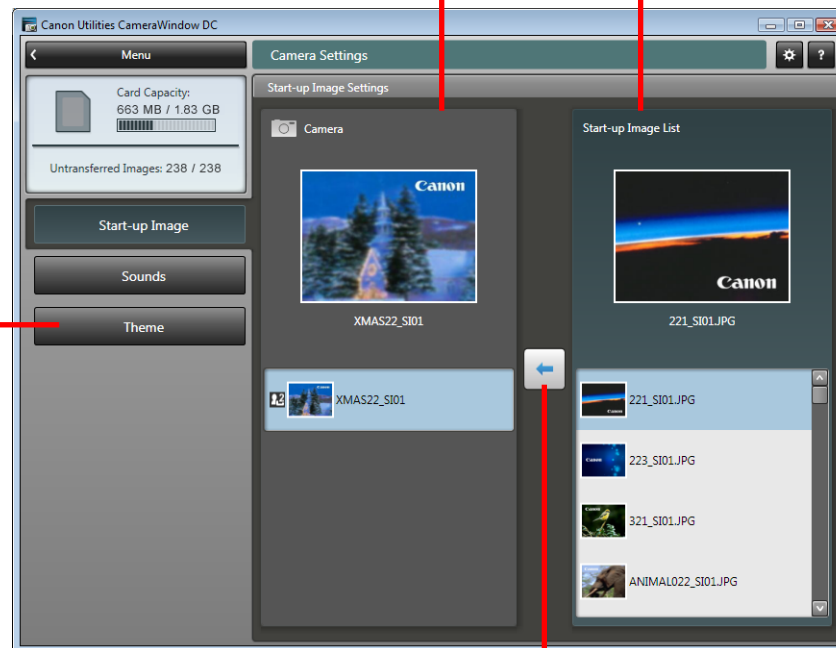
! IMPORTANT

- My Camera Settings are only available with certain camera models that list them as features in the "Specifications" section of the *Camera User Guide*.
- With Windows Vista, the settings files originally supplied with ZoomBrowser EX cannot be deleted.

My Camera Settings registered in the camera.

My Camera Settings in the computer.

You can register the start-up image, start-up sound, shutter sound, operation sound and self-timer sound collectively if you select [Theme].



After choosing a My Camera Settings file from the left-hand list, select a My Camera Settings file to replace in the right-hand list and click this button to register it in the camera.

HINT

Downloading My Camera Settings Files

You can download various files to use in My Camera Settings from CANON iMAGE GATEWAY.

Transferring Images

Transferring Images to a Camera

Images transferred once to a computer can be transferred back to the camera.




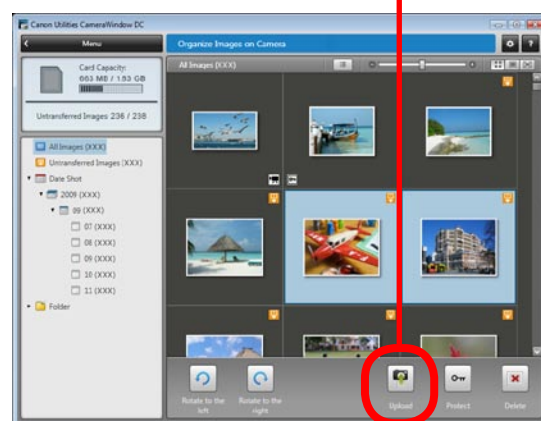
! IMPORTANT

- Cameras that use the "MOV" data type can play back movies transferred back to the camera if movies were taken with that camera. Refer to the "Data Type" item in "Specifications" near the end of the Camera User Guide to see if the camera uses the "MOV" data type. You may not be able to play back movies taken with another camera.
- Only still images compliant with Design rule for Camera File system standards can be transferred to your camera's memory card.



Procedures

- 1 Connect the camera to the computer.
- 2 Turn on the camera power, and set it to playback mode.
- 3 Select [Downloads Images From Canon Camera using Canon CameraWindow]. Select [Canon CameraWindow] when using Windows XP.
- 4 [Organize Images on Camera]
- 5 [Organize Images]
- 6  (Upload)



7 Select images.

- If the Main Window is open when the camera is connected (directly after transferring for instance), open the CameraWindow (menu screen) by clicking the [Acquire & Camera Settings] task button, followed by [Connect to Camera].

CANON iMAGE GATEWAY

About CANON iMAGE GATEWAY (for U.S.A. customers only)

CANON iMAGE GATEWAY is an online photo service for the purchasers of this product. Registering online allows you to use the various services.

! IMPORTANT

- Internet access is required to use CANON iMAGE GATEWAY (You must already have an account with an Internet service provider (ISP), browser software installed and an Internet connection).
- See the homepage for information regarding browser versions (Microsoft Internet Explorer, etc.) and settings to best connect to CANON iMAGE GATEWAY online photo services.
- Any ISP account charges and access fees must be paid separately.

Registering

First, register as a CANON iMAGE GATEWAY member.

Register



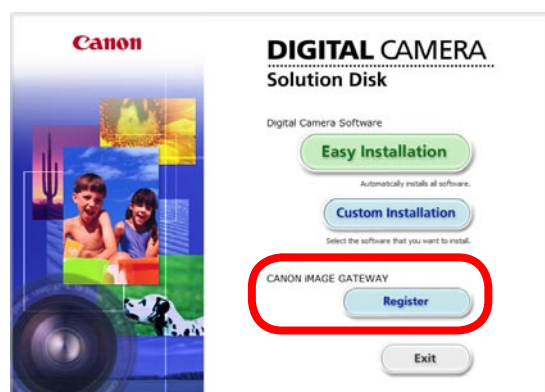
CANON
iMAGE
GATEWAY



Procedures

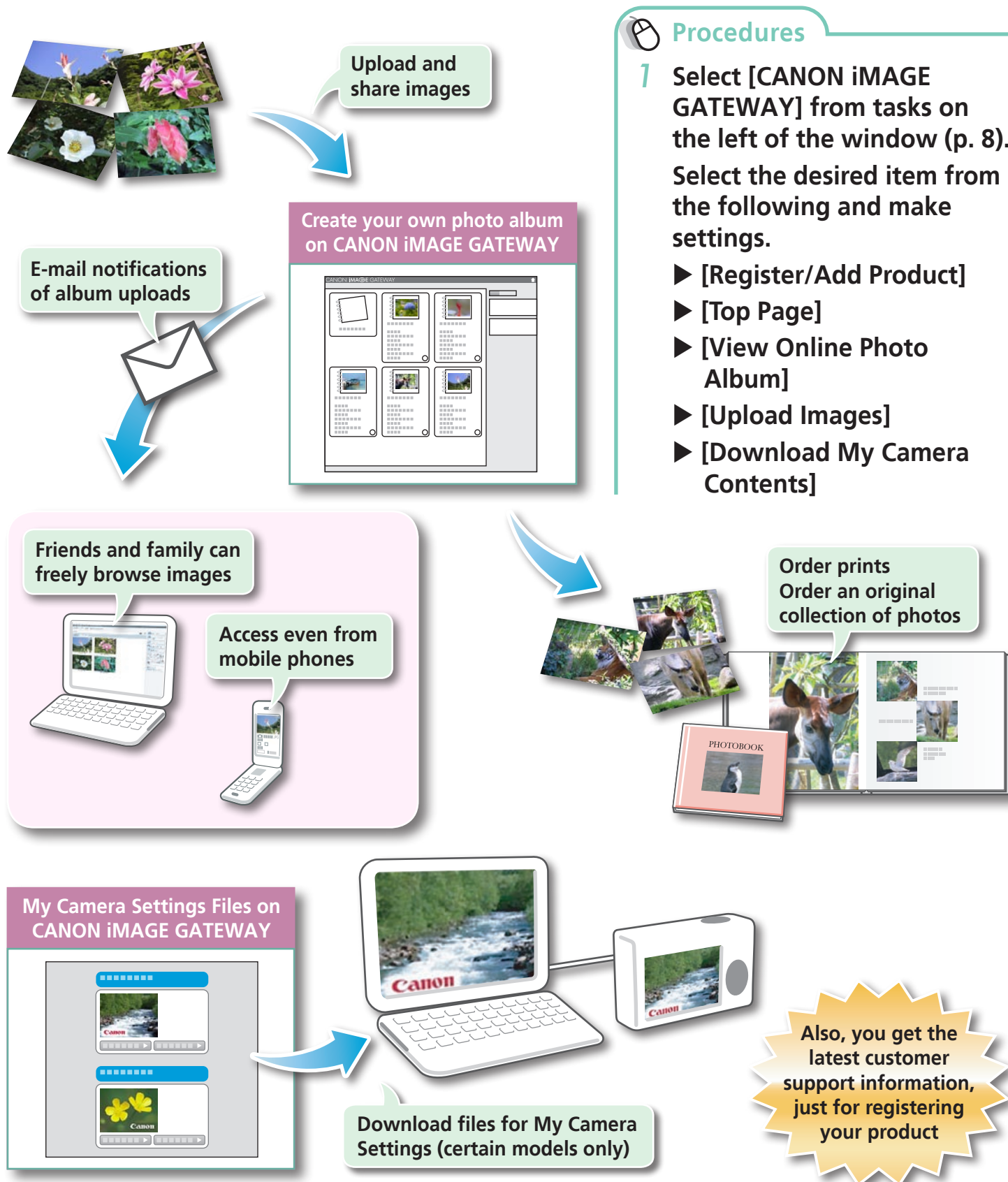
- 1 Select [CANON iMAGE GATEWAY] from tasks on the left of the window (p. 8), then select [Register/Add Product].

- You can register online using the supplied CD-ROM. To do this, in the installer panel, click [Register] underneath CANON iMAGE GATEWAY.



Available Services

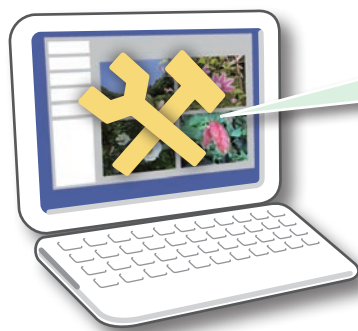
CANON iMAGE GATEWAY offers a variety of convenient and useful services.



Preference Settings

Customizing ZoomBrowser EX

You can configure ZoomBrowser EX to operate according to your preferences.

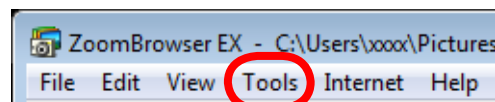


- Overall themes, such as window appearances
- Processing methods for images shot with the camera on end
- Categories of shooting information displayed
- Show/hide messages
- Print settings
- Zoom speed



Procedures

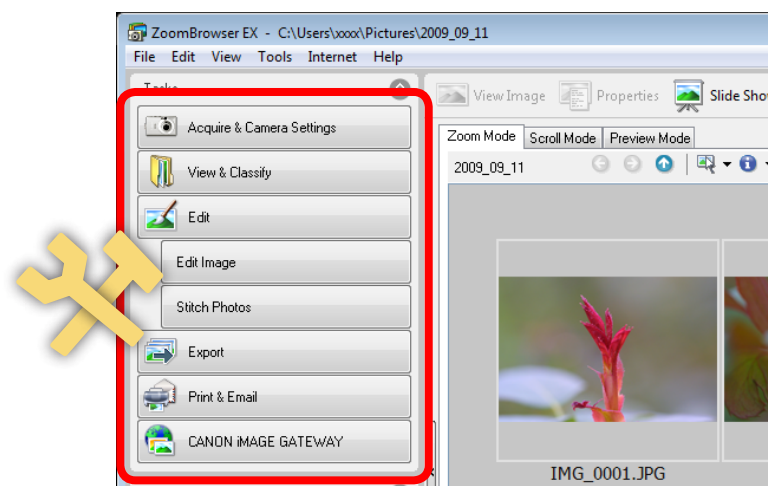
1



[Tools] and [Preferences].

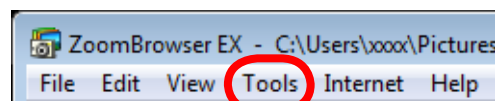
Customizing the Task Buttons

You can hide items that you do not usually use to streamline the task buttons.



Procedures

1



[Tools] and [Customize].

List of Available Functions

CameraWindow Functions

Function Names		Description of Function	Page
Import Images from Camera	Import Untransferred Images	Only transfers images from the camera that have not yet been transferred.	p. 9
	Select Images to Import	Only transfers chosen images from the camera.	p. 11, 17
	Import All Images	Transfers all images from the camera.	p. 11
Organize Images on Camera	Organize Images	Protect, rotate, and delete images on the camera. Also transfers images back to the camera from your computer.	p. 18, 47
Camera Settings	Set Start-up Image	Sets the camera start-up screen.	p. 45
	Set Sounds	Sets camera sound effects (start-up sound, shutter sound, operation sounds, self-timer sound).	p. 45
	Set Theme	Sets the camera start-up screen and sound effects in My Camera Settings.	p. 45
Preferences	General	Sets the camera owner name, and start-up screen when CameraWindow starts.	p. 16
	Import	Sets the automatic transfer settings and destination folder.	p. 10, 11

ZoomBrowser EX Functions

Task Button Names		Description of Function	Page
Acquire & Camera Settings	Connect to Camera	Connects to the camera to open CameraWindow (menu screen), and use CameraWindow functions.	—
	Acquire Images from Memory Card	Transfers images from a memory card. You can also select images on the memory card and print them.	p. 11
	Transfer Images to Memory Card	Transfers images from the computer to a memory card.	—
View & Classify	View as a Slide Show	Starts a slide show of the images selected in the Browser Area.	p. 38
	Rename Multiple Files	Changes the file names of the selected images in a single pass.	p. 39
	Classify into Folder	Classifies images and saves them into a specified folder.	p. 39
	Search	Performs image searches using criteria such as the Star Rating, modification date, shooting date, comments or keywords. Star Ratings, comments and keywords can be set in the image information column in the Preview Mode or in the Properties Window.	p. 42



Task Button Names		Description of Function	Page
Edit	Edit Image	Allows you to perform image editing, such as cropping, image correction, inserting comments, and red-eye correction. You can also use it to start other image editing programs.	p. 24
	Stitch Photos	Merges multiple images and creates a single large panoramic image.	p. 29
	Edit Movie	Edits movies or still images strung together. You can add text as titles, or background music, and apply various effects.	p. 30
	Digital Photo Professional - Process RAW Images	Converts RAW images into JPEG or TIFF images. You can adjust the image brightness, contrast and color balance among other attributes during conversion.	p. 31
Export	Export Still Images	Allows you to change the image size or type, and export it as a new image.	p. 33
	Export Movies	Allows you to change the movie size or type, and export it as a new movie.	p. 33
	Extract frames from a movie	Extracts still images from movies over a specified interval and saves them as image files.	p. 34
	Export Shooting Properties	Allows you to select the necessary data from the shooting information and export it as a text file.	p. 34
	Export as a Screen Saver	Exports the image as a screen saver file.	p. 35
	Export as a Wallpaper	Exports the image as a wallpaper file.	p. 35
	Backup to CD	Copies images to a CD-R/RW disk for backup.	p. 36
Print & Email	Photo Print	Prints one image per page. You can print "photos" easily.	p. 12
	Index Print	Lines up small versions of the images in rows and prints.	p. 14
	Print Using Other Software	Select the software to use and then print.	p. 13
	Email Images	Converts the selected images to the appropriate size for transmission by e-mail. You can also use it to automatically start an e-mail program after conversion.	p. 37
CANON iMAGE GATEWAY	Register/Add Product	Connects to CANON iMAGE GATEWAY and opens the registration page.	p. 48, 49
	Top Page	Connects to CANON iMAGE GATEWAY and goes to the top of the page.	p. 49
	View Online Photo Album	Connects to CANON iMAGE GATEWAY and displays albums created.	p. 49
	Upload Images	Connects to CANON iMAGE GATEWAY and uploads images.	p. 49
	Download My Camera Contents	Connects to CANON iMAGE GATEWAY and downloads images and sounds for use with My Camera Settings.	p. 49

Supported Image Types

The following is a list of image types supported by ZoomBrowser EX.

JPEG (.JPG)

Most cameras use this image type. It compresses at very high ratios, taking advantage of the characteristics of the human eye. However, because it is an irreversible compression method (part of the data is lost during compression), if you process and save an image repeatedly using this method, the image may become rougher.

RAW (.CRW/.CR2)

This is a proprietary image type provided by Canon. It saves the output of the image pixels from a digital camera without any deterioration in the quality of the image. Some cameras might not support this image type.

Windows bitmap (.BMP)

This image type comes standard with Windows. Most Windows programs support it.

TIFF (.TIF)

This is a relatively popular image type. It is widely supported by non-Windows programs (such as Macintosh).

PhotoCD (.PCD)

This is the image type used for Photo CDs.

AVI (.AVI)

Standard Windows movie type. The movie thumbnail and a movie icon show in ZoomBrowser EX's Browser Area.

MOV (.MOV)

Movie type. The movie thumbnail and a movie icon show in ZoomBrowser EX's Browser Window.

Uninstalling the Software

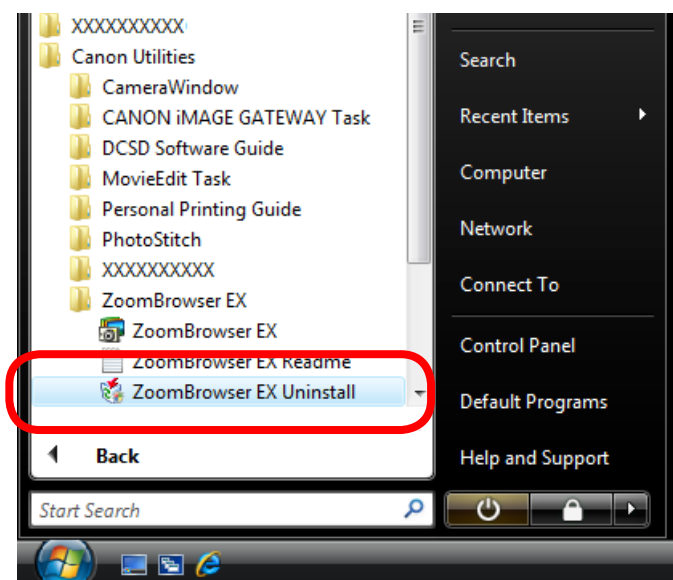
The procedures for uninstalling the software are only required when you wish to delete the programs from your computer or when reinstallation is required to fix corrupted files.

! IMPORTANT

- Computer administrator status is required to perform the following operation.

This explanation uses ZoomBrowser EX to demonstrate how to uninstall a program. You can remove other programs with the same procedures.

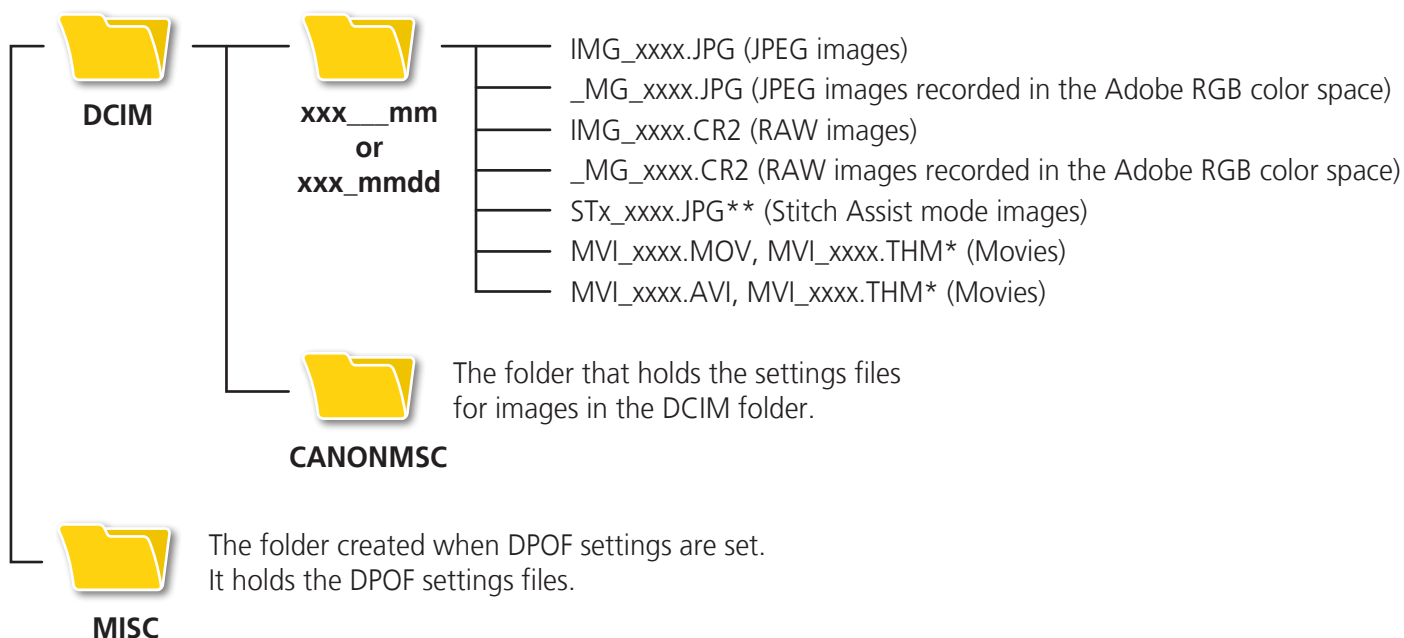
- 1 Click the Windows [Start] menu and select [All Programs] or [Programs], followed by [Canon Utilities], [ZoomBrowser EX] and [ZoomBrowser EX Uninstall].



The uninstall utility will start and remove ZoomBrowser EX.

Memory Card Folder Structure

Images on the memory card are in either the [DCIM] folder's [xxx__mm] folder, or the [xxx_mmdd] folder (xxx: numbers 100 to 999, mm: shooting month, dd: shooting day).



- * These files are the thumbnail image files for the camera's index replay mode. If you delete these files, you will be unable to transfer movies to the camera from a computer.
- The "xxxx" in file names represent four-digit numbers.
- Each successive file shot in Stitch Assist mode is assigned a letter starting from "A," which is inserted as the third digit in the name. i.e. [STA_0001.JPG], [STB_0002.JPG], [STC_0003.JPG]...
- All folders except the "xxx__mm" or "xxx_mmdd" folders contain image settings files. Do not open or delete them.
- Depending on the camera, some data types cannot be recorded.

Troubleshooting

Please read this section if you encounter a problem using the software.

Start by Checking This

Investigate the following points first if you encounter a problem.

Does your computer satisfy the requirements listed in the System Requirements section?

See “System Requirements” in the *Camera User Guide*.

Is the camera correctly connected to the computer?

See the *Camera User Guide* for the correct connection procedures. Also check to ensure that you are using the correct cable and that it is securely attached at both ends.

Are the camera and computer in the correct modes to transfer data?

Some models require the camera to be set to the playback mode to transfer data. See the *Camera User Guide* for details.

Is the battery sufficiently charged?

Check the battery charge if you are powering the camera with a battery. You are recommended to use an AC adapter (sold separately) to power the camera when it is connected to a computer.

Problems

Try the suggested solutions to the common problems listed below.

Add New Hardware Wizard displays when the camera is connected to the computer with an interface cable.

Click [Cancel] to close the window. Temporarily disconnect the camera from the computer. Next, read Start by Checking This on the previous page and resolve the problem.

Camera not detected, Events dialog won't display or images will not transfer to the computer (when camera is connected to the computer via an interface cable).

The camera may have been recognized as another device under the following circumstances.

- The [Scanners and Cameras] icon cannot be found in the [Hardware and Sound] within the [Control Panel] or the [Printers and Other Hardware] window.
- Your camera model name, [Canon Camera] or a camera icon does not display when [Scanners and Cameras] icon is clicked.

Solution:

Delete the device with the following procedures.

IMPORTANT

- **Computer administrator status is required to perform the following operation.**

1 Display the [Device Manager] dialog.

Windows Vista:

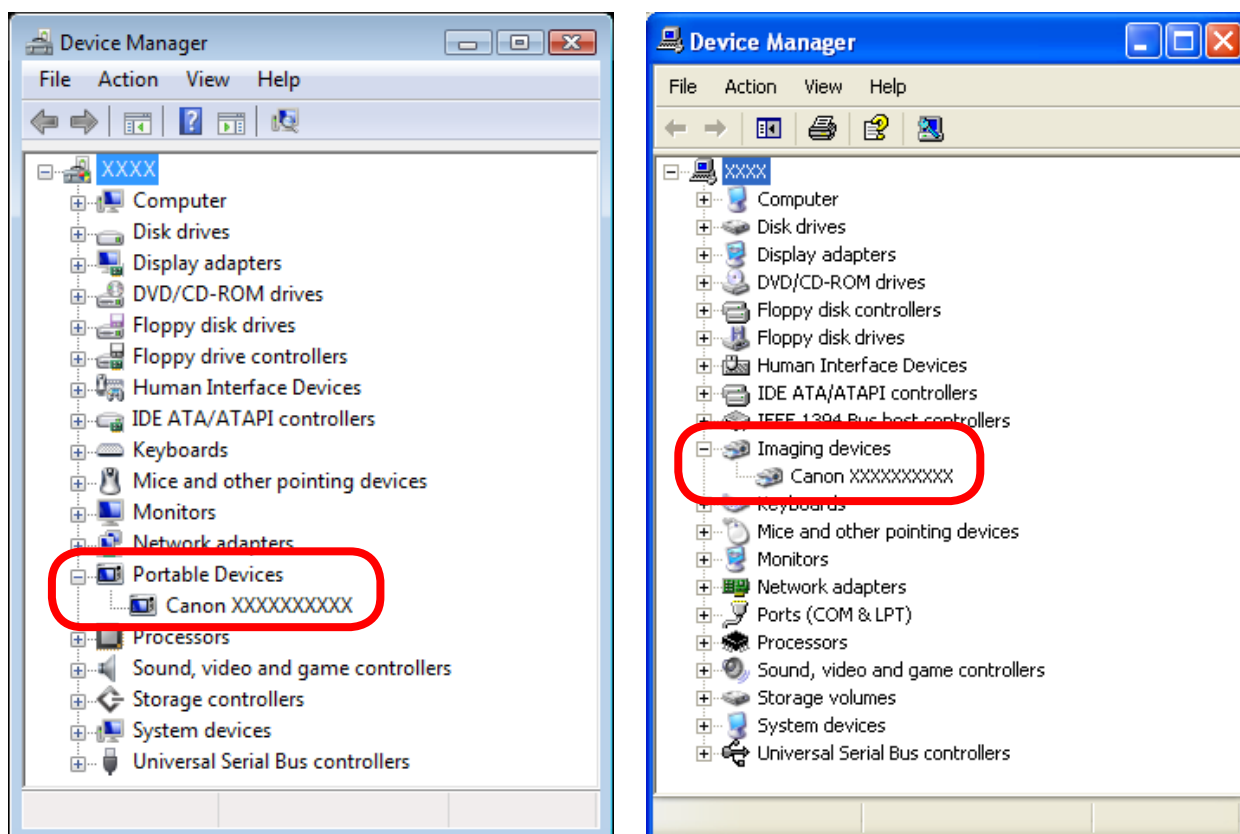
Click the [Start] menu, [Control Panel], [System and Maintenance], [System], and Task list [Device Manager].

Windows XP:

Click the [Start] menu, [Control Panel], [Performance and Maintenance], [System], [Hardware] tab, and the [Device Manager] button.

2 Click the [+] symbol beside the [Other devices], [Portable Devices] and/or [Imaging devices] category.

Your camera model name or [Canon Camera] will display in these categories if it is being recognized as an "other" device.



There are other potential reasons for the problem if the [Other devices], [Portable Devices] or [Imaging devices] categories do not appear or your camera model name or [Canon Camera] does not appear. Proceed to Step 5, and temporarily quit the procedures.

3 Select your camera model name or [Canon Camera], right-click and select [Delete].

4 Click [OK] in the confirmation dialog.

Delete all instances of your camera model name or [Canon Camera] if it appears in one or more places in the [Other devices] or [Imaging devices] categories.

5 Close [Device Manager] or [System Properties].

Software Guide Windows (ZoomBrowser EX, PhotoStitch)

Disclaimer

- While every effort has been made to ensure that the information contained in this guide is accurate and complete, no liability can be accepted for any errors or omissions. Canon reserves the right to change the specifications of the hardware and software described herein at any time without prior notice.
- No part of this guide may be reproduced, transmitted, transcribed, stored in a retrieval system, or translated into any language in any form, by any means, without the prior written permission of Canon.
- Canon makes no warranties for damages resulting from corrupted or lost data due to a mistaken operation or malfunction of the camera, the software, memory cards, personal computers, peripheral devices, or use of non-Canon memory cards.

