

B22CS50SNS

Linea 500 Series

Counter Depth Side by Side Refrigerator



Features and Benefits

Convenience

- EasyLift™ Shelf - Move shelf up and down, even when fully loaded
- CoolPaks™ - Conveniently stored in their own compartment in the freezer door
- Frameless Exterior Ice and Water Dispenser with LED illumination serves filtered water and both crushed and cubed ice
- Spill proof glass shelves
- Fully extendable freezer drawers at an 90 degree door opening angle

Performance

- Dual Evaporator keeps the air-flows and aromas separate between the fridge and the freezer
- Multi-Flow Shower Cooling System™ - For optimum, uniform cold air circulation
- Freshprotect™ Box - Three adjustable temperature settings for fish and meat, dairy and produce
- AirFresh carbon filter reduces unwanted odors
- AntiBacterial wall linings provide a hygienic atmosphere
- Hide-away water filter maximizes storage capacity
- QuickIce for fast ice production when you need it
- Long Doors - No unsightly grill disrupting the sleek design
- Hidden Hinges
- Counter-depth size for a true built-in look
- SuperCool™ - Quickly balances temperatures between cool items and newly placed goods
- SuperFreeze™ - Quickly balances temperatures between frozen items and newly placed goods

Safety



Notes: All height, width and depth dimensions are shown in inches. *Please refer to installation instructions prior to making cutout. BSH reserves the absolute and unrestricted right to change product materials and specifications, at any time, without notice. Consult the product's installation instructions for final dimensional data and other details. Applicable product warranty can be found in a accompanying product literature or you may contact your account manager for further details.

For more information on our entire line of products, go to boschappliances.com or call 1-800-944-2904.

Copyright ©2009 BSH Home Appliances Corporation. All rights reserved. Bosch is a registered trademark of Robert Bosch GmbH.

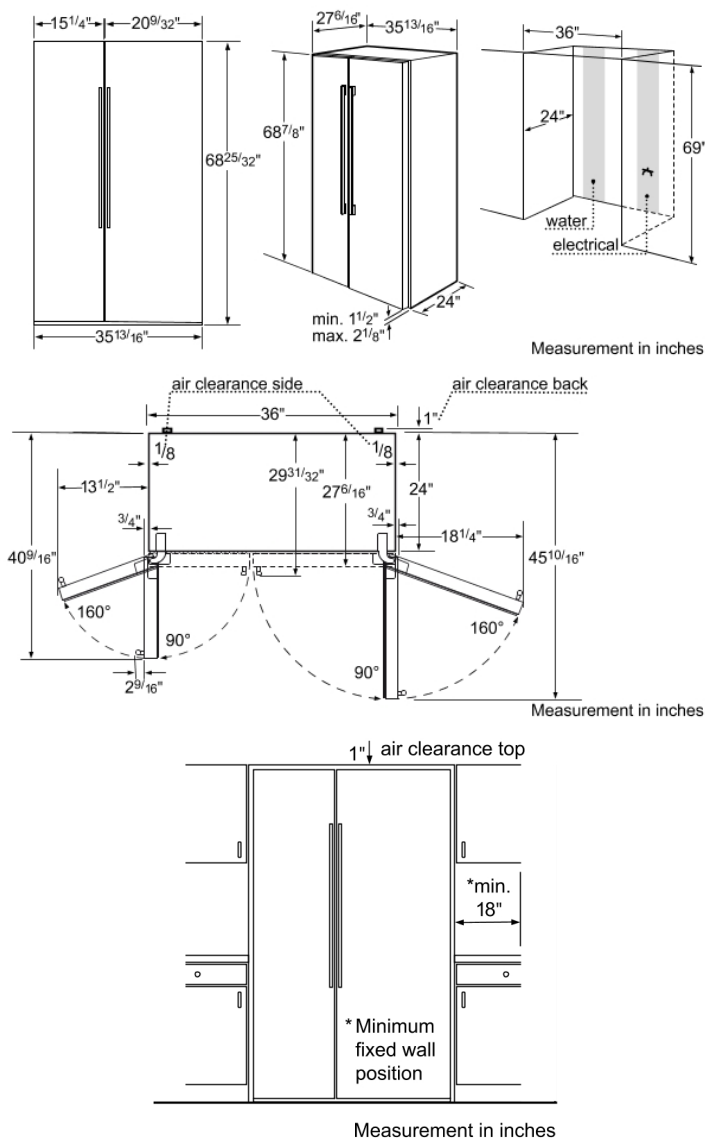
Litho Date: 09/2009



B22CS50SNS

Linea 500 Series

Counter Depth Side by Side Refrigerator



Features

Multi-Flow Air Tower	Yes
SUPERCOOL	Yes
SUPERFREEZE	Yes
Carbon Air Filter	No
Temperature Controlled Drawer	Yes
Humidity Control Drawer	Yes
Number of Door Bins - Refrigerator	2
Adjustable Door Bins - Refrigerator	Yes
Tilt-Out Door Bins - Refrigerator	Yes
Gallon Storage Bins	4
Number of Shelves - Refrigerator	4
Door Hinge	Left-mounted, Right-mounted
Adjustable Shelves - Refrigerator	3
Number of Shelves - Freezer	2
Reversible Door Hinge	No
Adjustable Shelves - Freezer	Yes

Technical Specification

UPC code	825225868965
Color / Material housing	Chrome Inox-metallic
Colour.Material door	Stainless steel
Panel ready	
Silence level (dBA)	44
Watts (W)	300
Current (A)	10
Volts (V)	115
Frequency (Hz)	60
Energy consumption (kWh/yr)	542.03
Energy Star® qualified	Yes
Approval certificates	NOM, UL
Power cord length (in)	87"
Required cutout size (HxWxD) (in)	x x
Appliance Width (in)	36"
Height (in)	69"
Depth (in)	30"
Capacity in 0.75l (bordeaux bottles)	
Total unit gross capacity (cu. ft.) - AHAM	22
Product packaging dimensions (HxWxD) (in)	72.63 x 38.58 x 32.95
Refrigerator Gross capacity (cu. ft.)	13
Freezer Gross capacity (cu ft)	8
Net weight (lbs)	359
Gross weight (lbs)	375

Notes: All height, width and depth dimensions are shown in inches. *Please refer to installation instructions prior to making cutout. BSH reserves the absolute and unrestricted right to change product materials and specifications, at any time, without notice. Consult the product's installation instructions for final dimensional data and other details. Applicable product warranty can be found in a accompanying product literature or you may contact your account manager for further details.

For more information on our entire line of products, go to boschappliances.com or call 1-800-944-2904.

Copyright ©2009 BSH Home Appliances Corporation. All rights reserved. Bosch is a registered trademark of Robert Bosch GmbH.

Litho Date: 09/2009

