

Frigidaire

Factory Parts Catalog

Product No.	FAQG7073KB0	FAQG7073KW0
Market	North America	North America
Color	black	white
Volts	120	120
Wiring Diagram	137115300	137115300
Owner's Guide	137135000	137135000
Installation Instructions	137134900	137134900

 **Electrolux**

Electrolux Major Appliances
 North & Latin America
 P.O. BOX 212378
 AUGUSTA, GA 30917

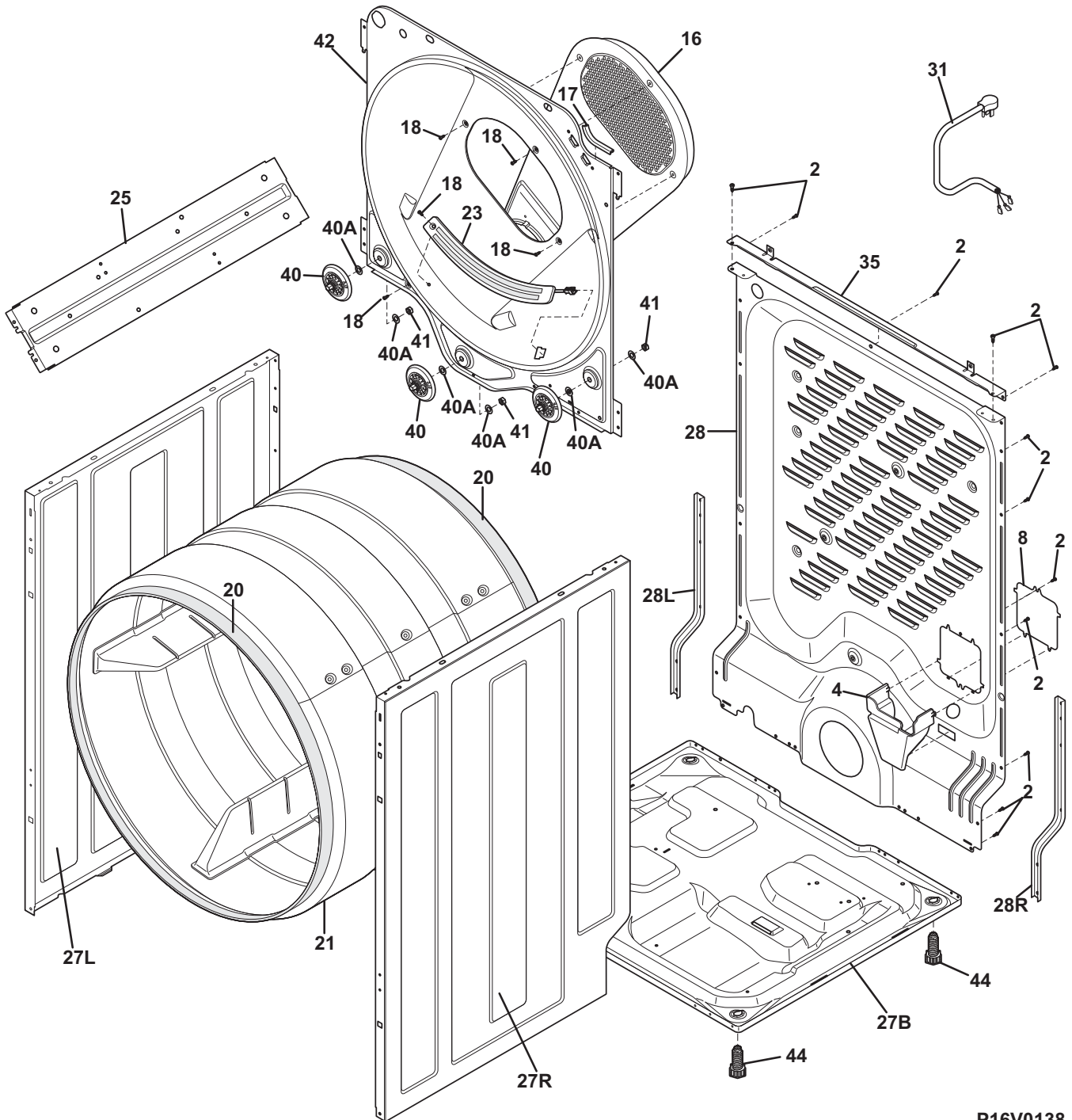
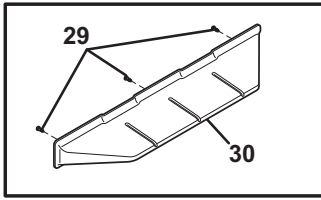
Publication No.
5995538153
 09/04/15
 (EN/SERVICE/WTC)
 154

GAS DRYER

Model No.
FAQG7073K

Copyright © 2009 Electrolux Home Products, Inc.
 All rights reserved.

CABINET/DRUM



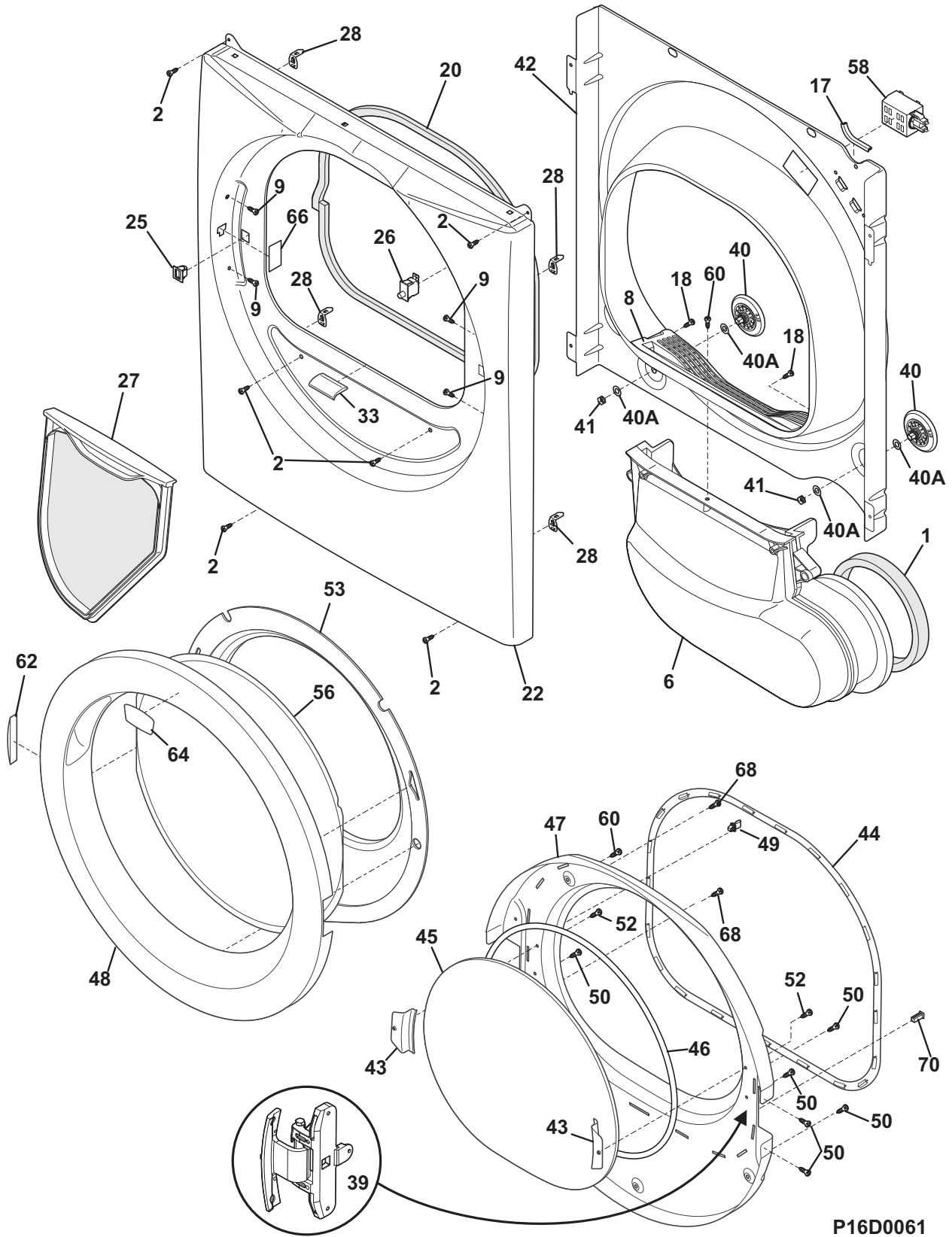
P16V0138

CABINET/DRUM

Model Index: A FAQG7073K (FAQG7073KB0)
B FAQG7073K (FAQG7073KW0)

POS. NO	PART NO.		DESCRIPTION
2	131168200	A B	Screw, pan head, 8-18B x 0.31
4	134792200	A B	Bracket, mounting, terminal block
8	134694400	A B	Cover, terminal block
16	134694020	A B	Duct, heat, rear
17	134792900	A B	Protector, edge, right top front
18	131477000	A B	Screw, 10-16AB x 0.375
20	134705900	A B	Seal, felt, drum
20*	5308027429	A B	Adhesive, high temp
21	134711900	A B	Drum, dryer, assembly 36"
23 #	134786110	A B	Sensor-moisture, assembly
23*	134930800	A B	Harness, moisture sensor
25	134912100	A B	Bracket, mounting, main control bx
27B	134690200	A B	Base, dryer
27L	134690360	A -	Panel, left side, black
27L	134690310	- B	Panel, left side, white
27R	134690460	A -	Panel, right side, black
27R	134690410	- B	Panel, right side, white
28	134713200	A B	Panel, backsheet, rear
28L	137029900	A B	Bracket, reinforcement, left, backsheet
28R	137066800	A B	Bracket, reinforcement, right, backsheet
29	131205100	A B	Screw, #8 pan head, 10-10B x 0.500, cr/sq drive
30	137116800	A B	Vane, straight, white
31 #	134501000	A B	Power Cord, electric svce
31*	134790900	A B	Strain Relief, 120, pwr cord
35	134706200	A B	Bracket, top panel mtg., rear
40	134715900	A B	Roller, wheel, complete asmy
40*	134716200	A B	Retainer, roller wheel, assembly
40A	134716700	A B	Washer, flat
41	134716800	A B	Nut, 3/8-16
42	134712815	A B	Bulkhead, panel, rear
44	137029700	A B	Leveling Leg, screw

FRONT PANEL/LINT FILTER



FRONT PANEL/LINT FILTER

Model Index: A FAQG7073K (FAQG7073KB0)
 B FAQG7073K (FAQG7073KW0)

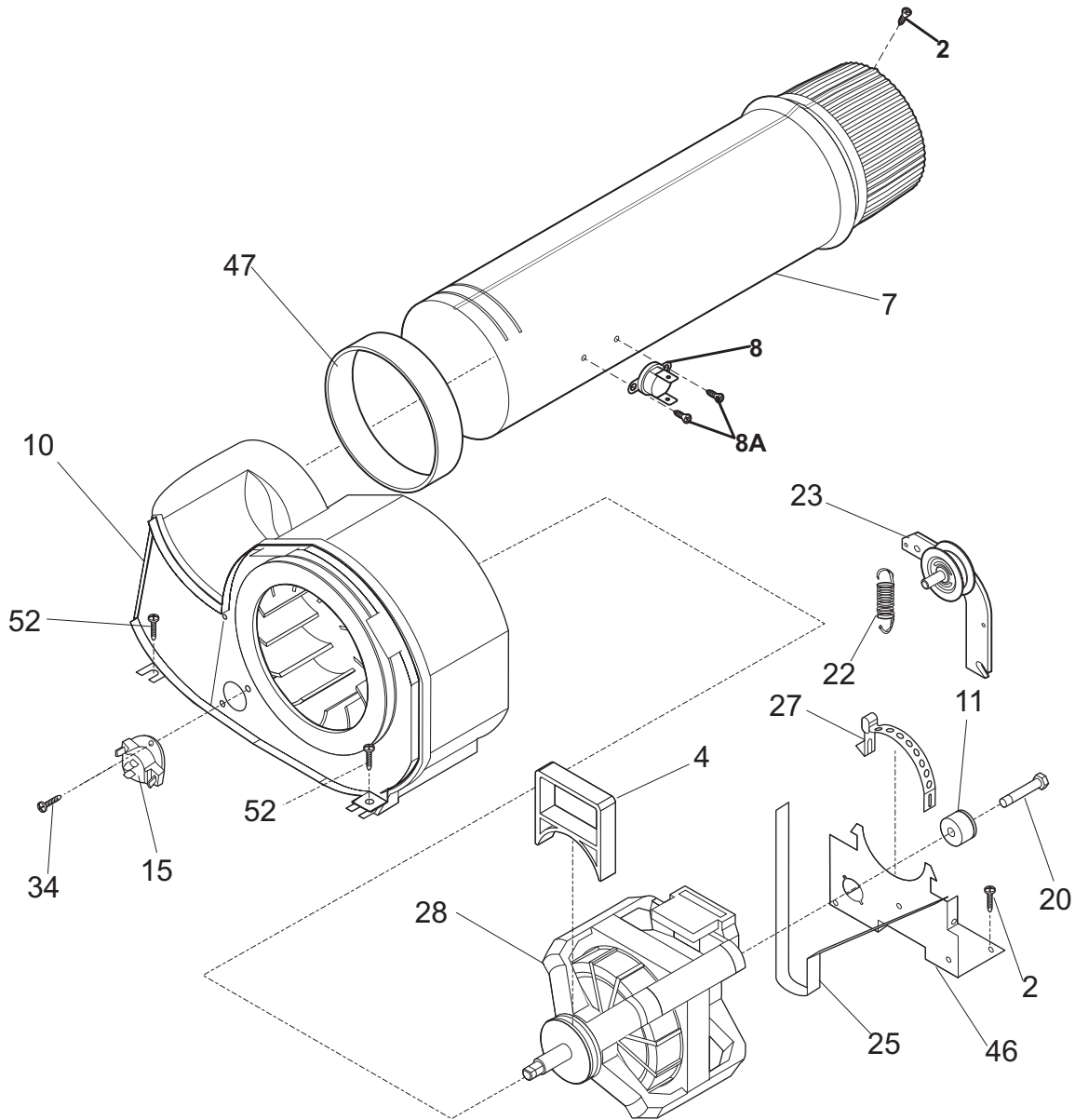
POS. NO	PART NO.		DESCRIPTION
1	137068200	A B	Seal, air duct
2	131168200	A B	Screw, pan head, 8-18B x 0.31
6	134710705	A B	Duct, air, gray
8	134701310	A B	Cover, lint housing
9	131633220	A -	Plug, gray
9	131633200	- B	Plug, white
17	134792900	A B	Protector, edge, right top front
18	131477000	A B	Screw, 10-16AB x 0.375
20	137116600	A B	Gasket, front panel
20*	5308027429	A B	• Adhesive, high temp
22	134696660	A -	Panel, front, black
22	134696610	- B	Panel, front, white
25	131658820	A -	Door Catch, gray, upper
25	131658800	- B	Door Catch, upper
26 #	134813661	A -	Switch, door, rectangle, gray
26 #	131843101	- B	Switch, door, rectangle, white, with drum light
26*	134910300	A B	Harness, wire, door switch
27	134701410	A B	Filter, lint, complete
28	137034500	A B	Clip, mounting, cabinet front
33	137067110	A B	Ramp, gray, door
39	134680900	A B	Hinge, door
40	134715900	A B	Roller, wheel, complete asmy
40*	134716200	A B	Retainer, roller wheel, assembly
40A	134716700	A B	Washer, flat
41	134716800	A B	Nut, 3/8-16
42	134696110	A B	Bulkhead, panel, front
43	134559300	A B	Bracket, door glass
44	134720902	A B	Gasket, door seal, gray
45	134611800	A B	Glass, inner door
46	134580300	A B	Gasket, door glass, inner
47	134683941	A B	Panel, inner door, gray
48	134854300	A B	Panel, outer door, chrome
48*	134554500	A B	Pad, outer door
49	5303211430	A B	Door Strike
50	131303300	A B	Screw, pan head, 10-16AB x 0.500, locking
52	134529600	A B	Screw, indt pan head, 8-18AB x 0.375
53	134558600	A B	Ring, door transition
56	134550600	A B	Glass, outer door lens
58 #	131843500	A B	Lamp Assy, drum light, w/mtg bracket
58*#	131862800	A B	• Lamp
60	134430300	A B	Screw, indt pan head, 10-14 x 0.625, quadrex
62	134680760	A B	Plug, hinge cutout, natural
64	137166825	A B	Nameplate, Affinity
66	134680820	A -	T-Plug, hinge hole
66	134680800	- B	T-Plug, hinge hole
68	134742002	A B	Plug, hinge hole, grey
70	134417502	A B	Plug, rectangular

CONTROLS/TOP PANEL

Model Index: A FAQG7073K (FAQG7073KB0)
 B FAQG7073K (FAQG7073KW0)

POS. NO	PART NO.		DESCRIPTION
1 #	137070860	A B	Control Board, printed circuit, with housing
3	134551225	A B	Knob, program, chrome
4	134553100	A B	Light Pipe, program
5 #	134556500	A B	Interface Board, pc, auxiliary
6	134347700	A B	Pin, program knob
8	134555525	A B	Push Button, round, #1
9	134553425	A B	Push Button, oval, #1
11	134864400	A B	Push Button, oval, start
12	134884900	A B	Spring, push button
13	134557501	A B	Light Pipe, start group
15	134552800	A B	Light Pipe, 5 x 4
16	134600000	A B	Light Pipe, row of 5
19	134402900	A B	Screw, Phillips, 6-19 x 0.650
22 #	134602100	A B	Wiring Harness, interface board
23 #	134710300	A B	Harness, wire
23*	134910200	A B	Harness, control
27A	134710900	A B	Bracket, control panel, left hand, mounting
27B	134711000	A B	Bracket, control panel, right hand, mounting
29	137169060	A -	Panel, control console, black
29	137169010	- B	Panel, control console
39	131205100	A B	Screw, #8 pan head, 10-10B x 0.500, cr/sq drive
53	134365060	A -	Panel, work top, black
53	134365000	- B	Panel, work top, white
55	134553200	A B	Lens, digital display
56	134557300	A B	Light Pipe, digital display
57 #	134503300	A B	Display, digital

MOTOR



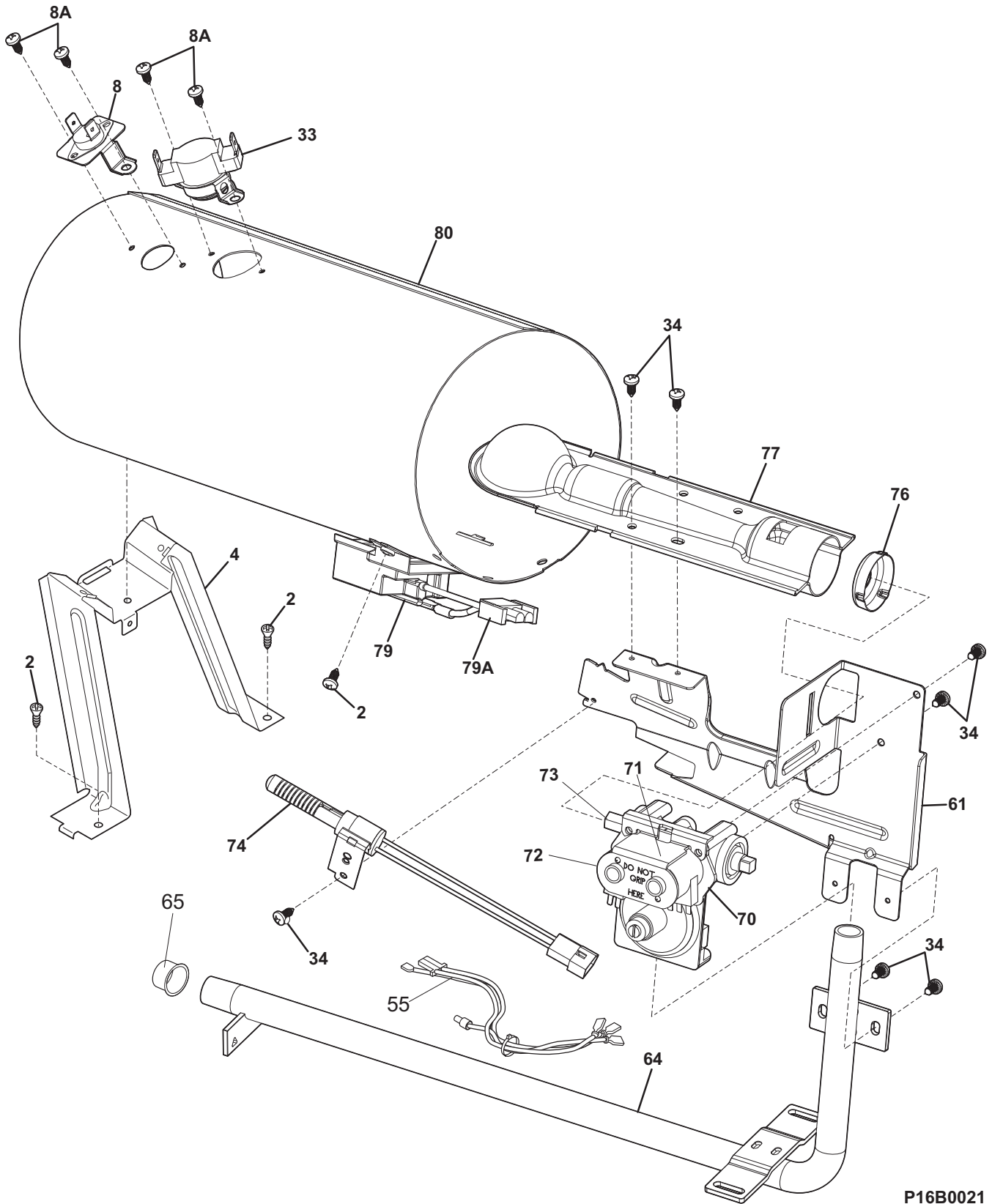
P16M0035

MOTOR

Model Index: A FAQG7073K (FAQG7073KB0)
 B FAQG7073K (FAQG7073KW0)

POS. NO	PART NO.		DESCRIPTION
2	131168200	A B	Screw, pan head, 8-18B x 0.31
4	131435200	A B	Lock, blower housing
7	134693900	A B	Tube, exhaust, rear
8 #	134711400	A B	LIMITER, thermal, exhaust, flush mount
8A	134935200	A B	Screw, #8-32 X .25, W/#6 QUADREXPAN
10 #	131775600	A B	Blower Assy, housing, w/cover & wheel
11	131749800	A B	Spacer, idler
15 #	134587700	A B	Thermistor, control
20	131017900	A B	Screw, hex head, 1/4-20T x 1.25, spacer mtg., thread cutting
22	131601000	A B	Spring, idler arm
23	134793500	A B	Idler Arm Assy, w/pulley
25 #	134719300	A B	Belt, "H", poly V, 5 rib
27	134242400	A B	Clamp, motor mtg.
28 #	137115900	A B	Motor, dryer drive, with pulley
34	131243700	A B	Screw, pan head, 8-18AB x 0.375
46	134693500	A B	Bracket, motor mounting
47	131633300	A B	Seal, exhaust tube
52	131202300	A B	Screw, 10-16AB x 0.625

BURNER



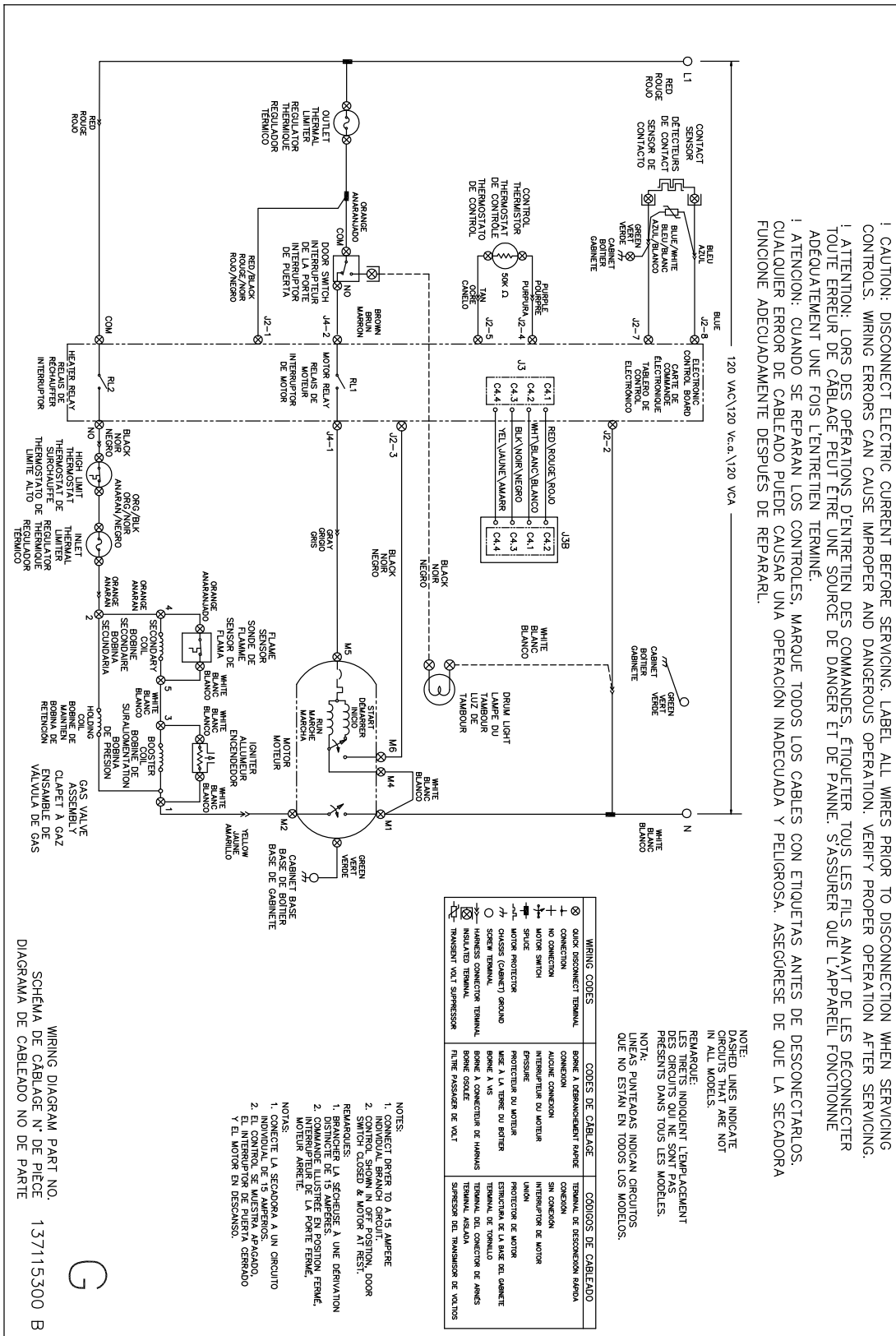
P16B0021

BURNER

Model Index: A FAQG7073K (FAQG7073KB0)
B FAQG7073K (FAQG7073KW0)

POS. NO	PART NO.		DESCRIPTION
2	131168200	A B	Screw, pan head, 8-18B x 0.31
4	134785000	A B	Bracket, heater/burner, mounting
8 #	134711500	A B	LIMITER, thermal
8A	134935200	A B	Screw, #8-32 X .25, W/#6 QUADREXPAN
33 #	137116700	A B	Thermostat, high limit
34	131243700	A B	Screw, pan head, 8-18AB x 0.375
55	137029500	A B	Harness, burner
61	134715800	A B	Bracket, gas valve
64	137019100	A B	Pipe, gas
65	08015112	A B	Cap, pipe
70 #	5303207409	A B	Valve, gas
71 #	5303307291	A B	Coil, secondary
72 #	5303307292	A B	Coil, booster
73 #	5303207410	A B	Orifice, natural gas, size 44
74 #	134192000	A B	Igniter Assy
76	134714400	A B	Collar, alignment, gas valve
77 #	134197700	A B	Burner, gas
79 #	5303281135	A B	Sensor, radiant
79A	134259100	A B	Harness, flame sensor
80 #	134692500	A B	Tube, burner

WIRING DIAGRAM



CAUTION: DISCONNECT ELECTRIC CURRENT BEFORE SERVICING. LABEL ALL WIRES PRIOR TO DISCONNECTION WHEN SERVICING CONTROLS. WIRING ERRORS CAN CAUSE IMPROPER AND DANGEROUS OPERATION. VERIFY PROPER OPERATION AFTER SERVICING.

ATTENTION: LORS DES OPERATIONS D'ENTRETIEN DES COMMANDES, ÉTIQUETER TOUS LES FILS AVANT DE LES DÉCONNECTER. TOUTE ERREUR DE CÂBLAGE PEUT ÊTRE UNE SOURCE DE DANGER ET DE PANNE. S'ASSURER QUE L'APPAREIL FONCTIONNE ADEQUATEMENT UNE FOIS L'ENTRETIEN TERMINE.

ATENCIÓN: CUANDO SE REPARAN LOS CONTROLES, MARQUE TODOS LOS CABLES CON ETIQUETAS ANTES DE DESCONECTARLOS. CUALQUIER ERROR DE CABLEADO PUEDE CAUSAR UNA OPERACION INADECUADA Y PELIGROSA. ASEGURESE DE QUE LA SECADORA FUNCIONE ADECUADAMENTE DESPUES DE REPARARLA.