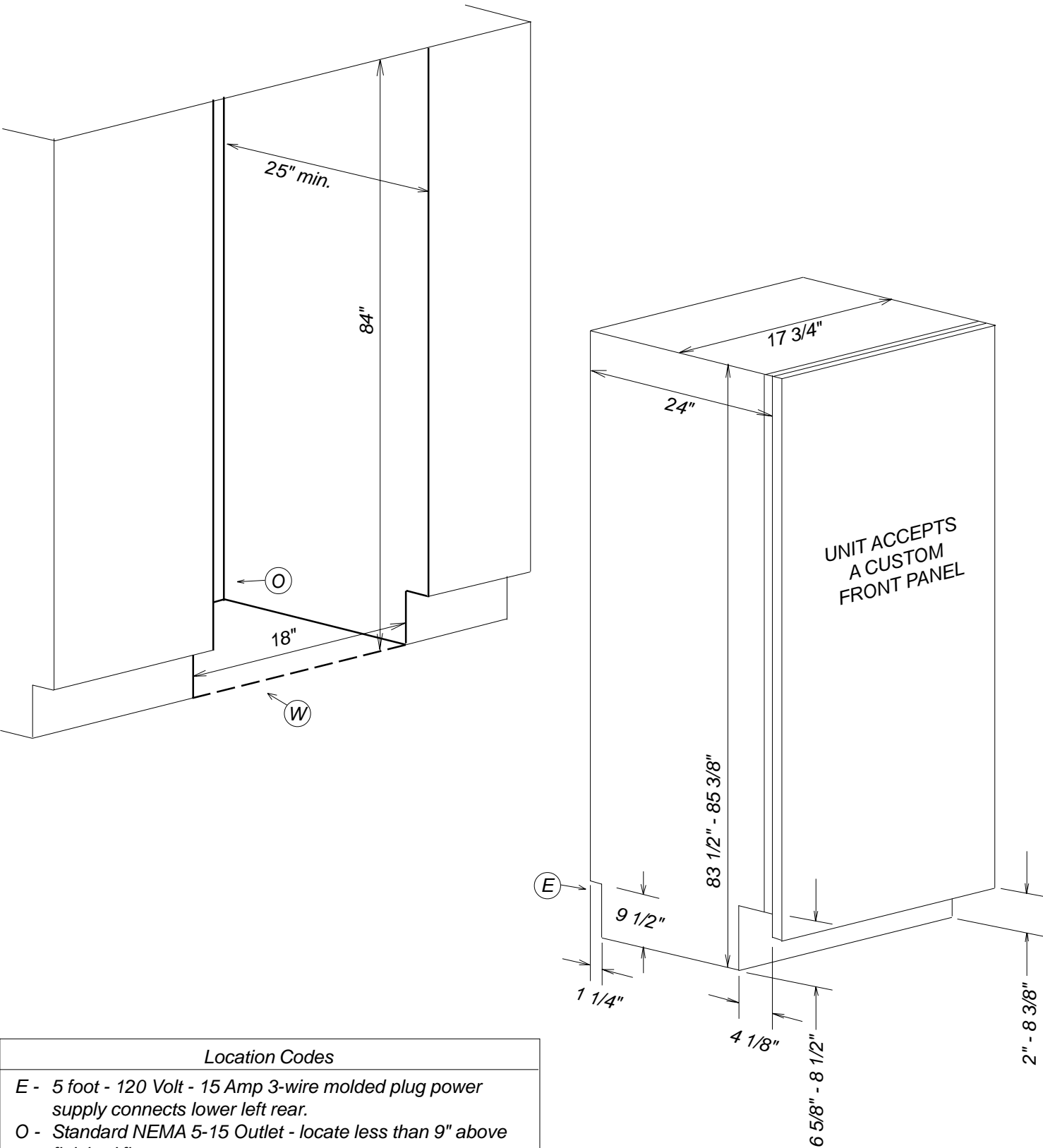


Product and Cut-out Dimensions

F1411Vi / F1471Vi



Location Codes
E - 5 foot - 120 Volt - 15 Amp 3-wire molded plug power supply connects lower left rear.
O - Standard NEMA 5-15 Outlet - locate less than 9" above finished floor
W - 1/4" flexible water line - tape to floor
Notes
• All Installations must be done in accordance with local codes

NOTE: Drawing is not to scale.
SPECIFICATION SHEETS 010107

Front Panel Information

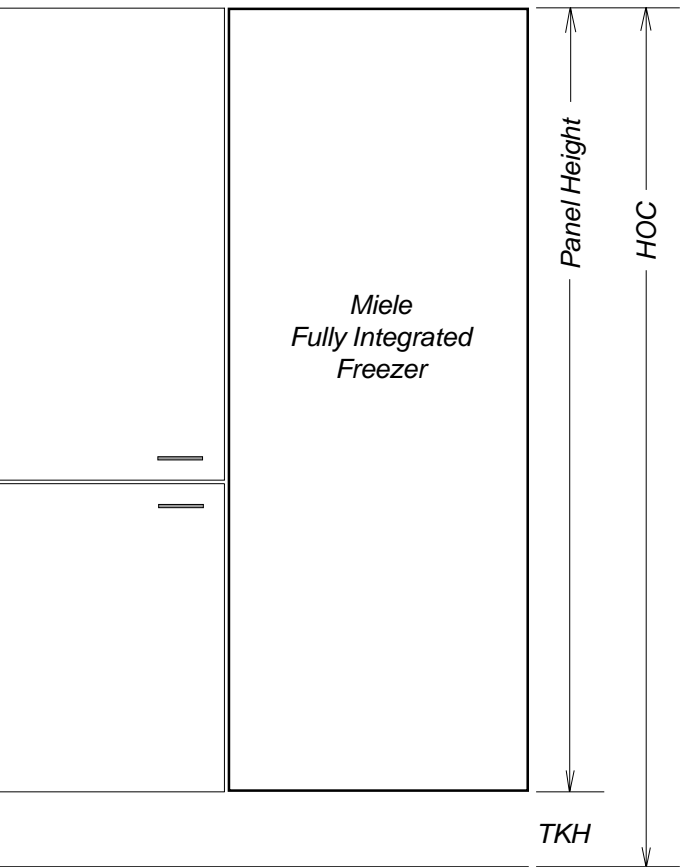
Fully Integrated Model



Custom Panel Installations

These units do not come equipped with a front panel. They are designed to accept a custom door panel supplied by the cabinet maker. Miele has a unique panel integration system which allows the panels to align with the surrounding cabinets.

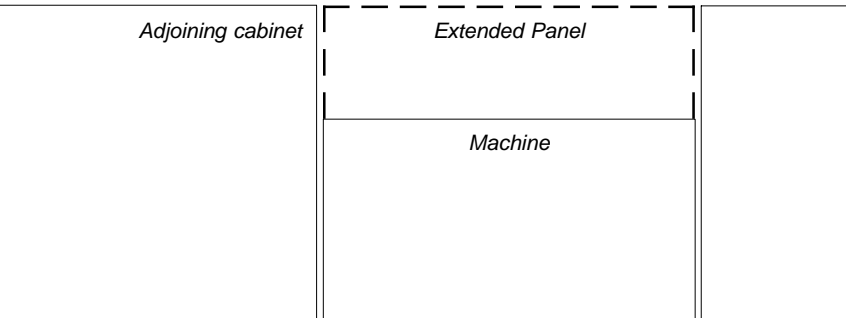
Panel size is determined in the following manner:



- Width:** 17 3/4" in all cases
- Thickness:** Minimum 3/4" outside frame
- Height:** Determined using the following calculation:
 $Panel\ Height = HOC - TKH$
HOC = Total height of cabinet or side panel
TKH = Toe-kick height
- Note:** Panel may extend above unit.
This is **not** considered in height calculation
- Maximum panel weight:** 50 Pounds

Panel Notes

If the adjoining cabinets are taller than the height of machine (HOM) - the front panel may be extended accordingly. Simply maintain the toekick height and extend the panel the needed distance.



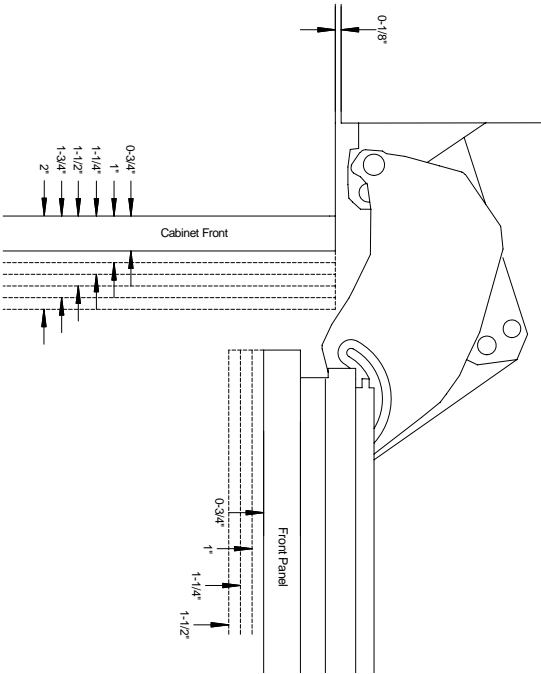
Front Panel Information

Hinging Details

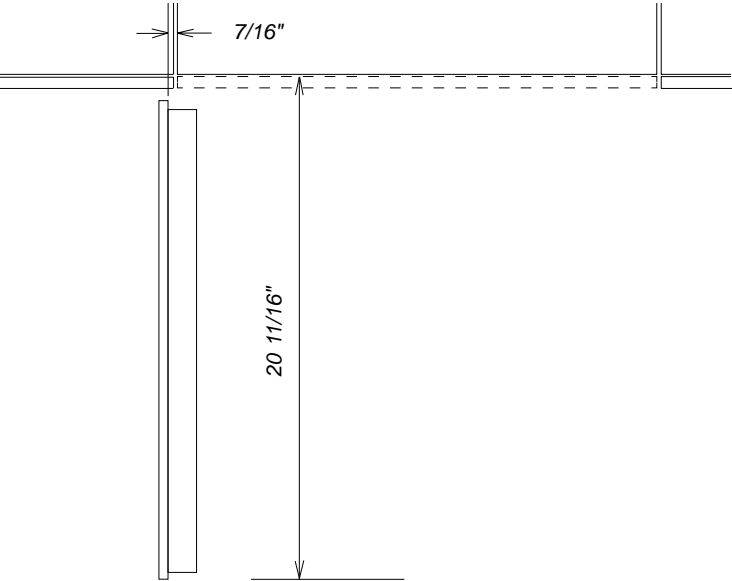


90° Door

Thickness options



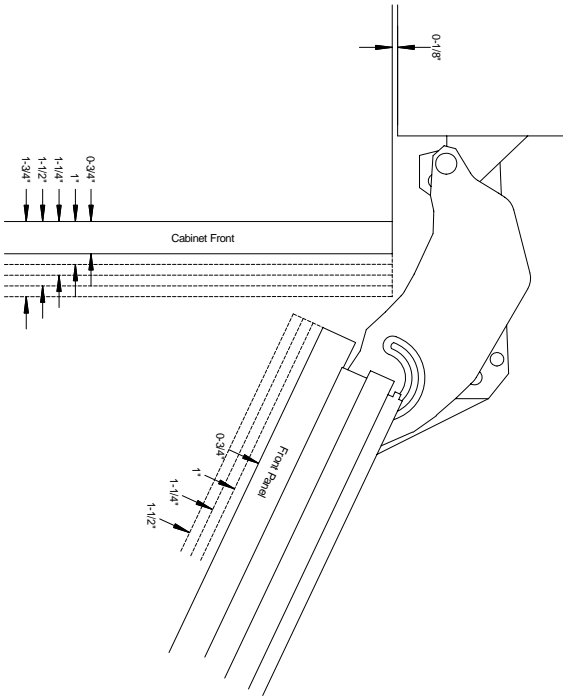
Door Swing



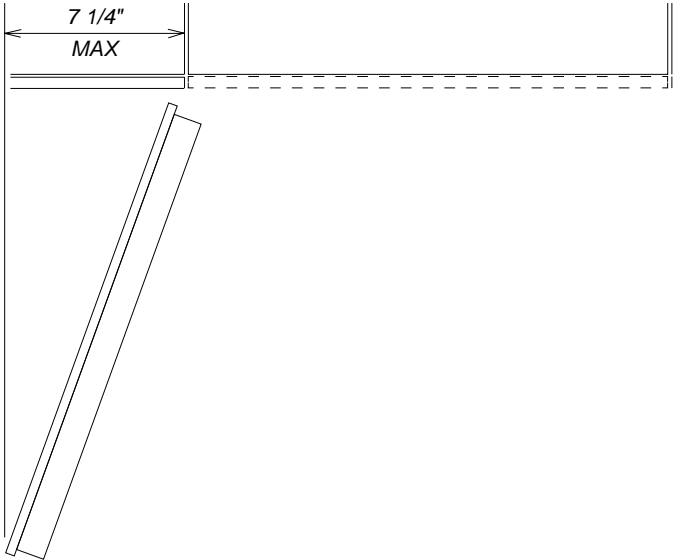
NOTE: Additional space needed depending on thickness of front panels and handle used

115° Door

Thickness options



Door Swing



NOTE: Additional space needed depending on thickness of front panels and handle used