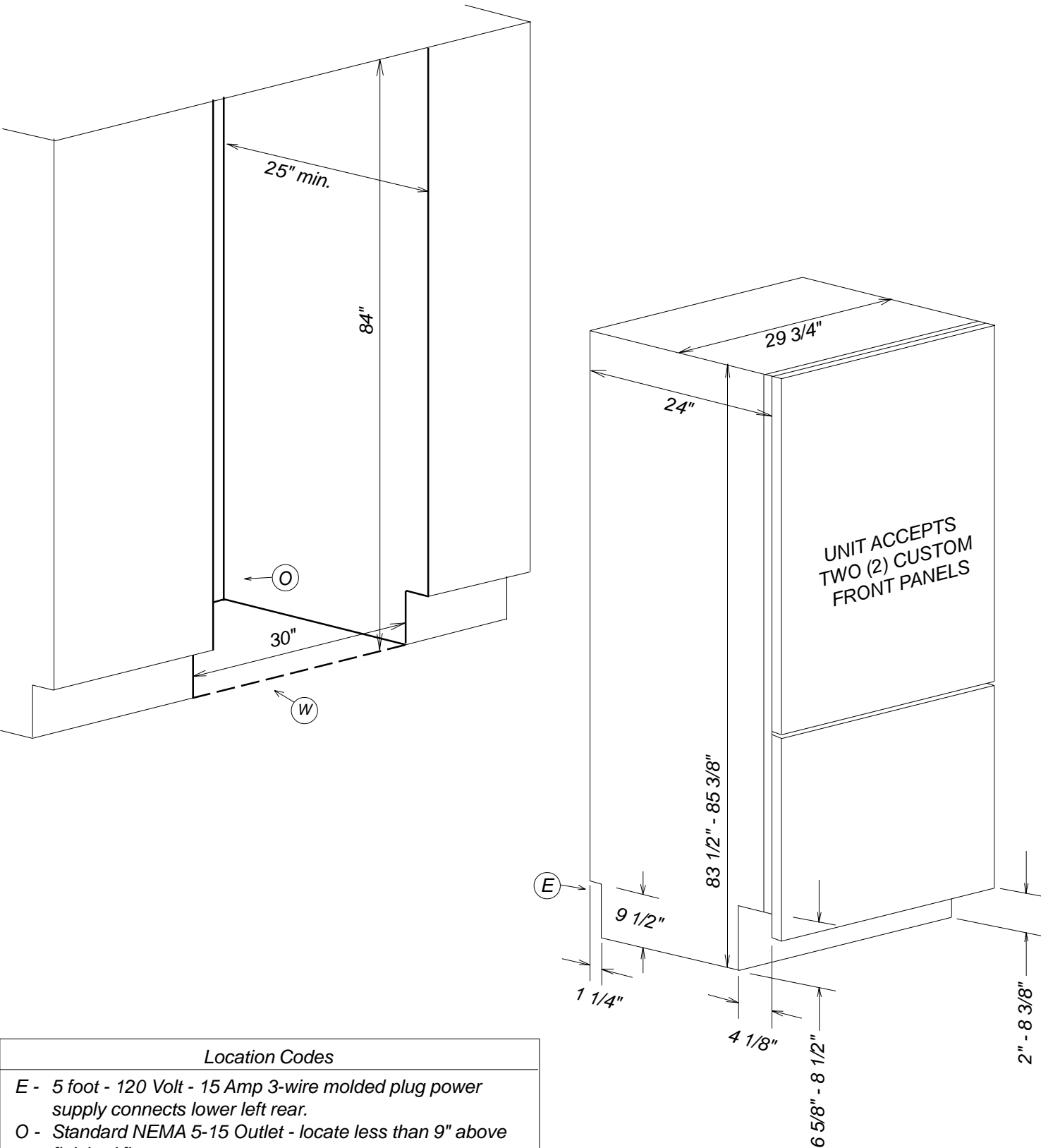


Product and Cut-out Dimensions

KF1811Vi / KF1801Vi



NOTE: Drawing is not to scale.
SPECIFICATION SHEETS 010707

Front Panel Information

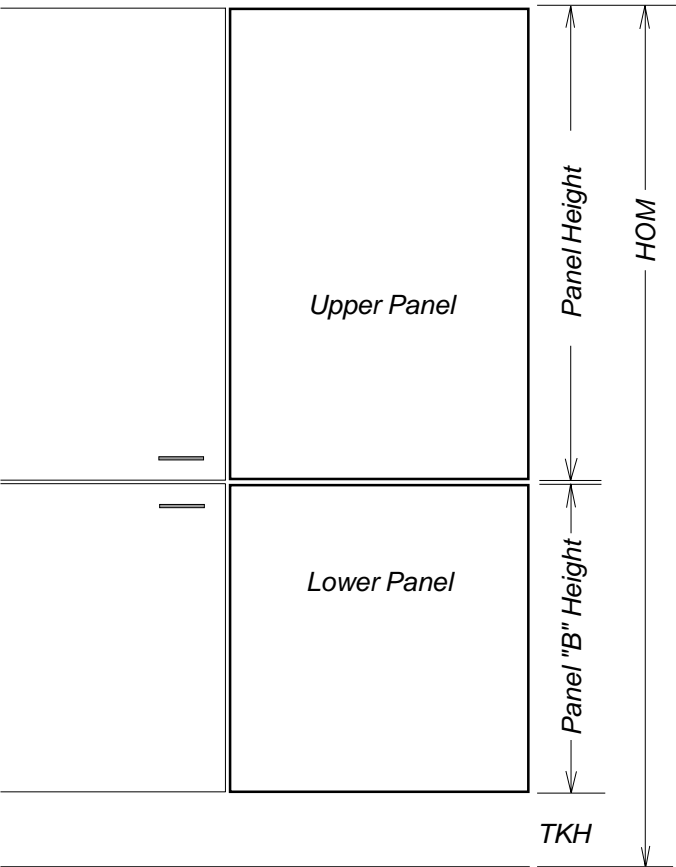
Fully Integrated Model



Custom Panel Installations

These units do not come equipped with a front panel. They are designed to accept a custom door panel supplied by the cabinet maker. Miele has a unique panel integration system which allows the panels to align with the surrounding cabinets.

Panel size is determined in the following manner:



Width: 29 3/4" in all cases
Thickness: Minimum 3/4" outside frame

Standard Upper Panel Height: 53 5/16"

Note: Panel may extend above unit.
This is **not** considered in height calculation

Maximum panel weight: 200 Pounds

Lower Panel Height: Use the following calculation:

Panel Height = HOM - 53 9/16 - TKH

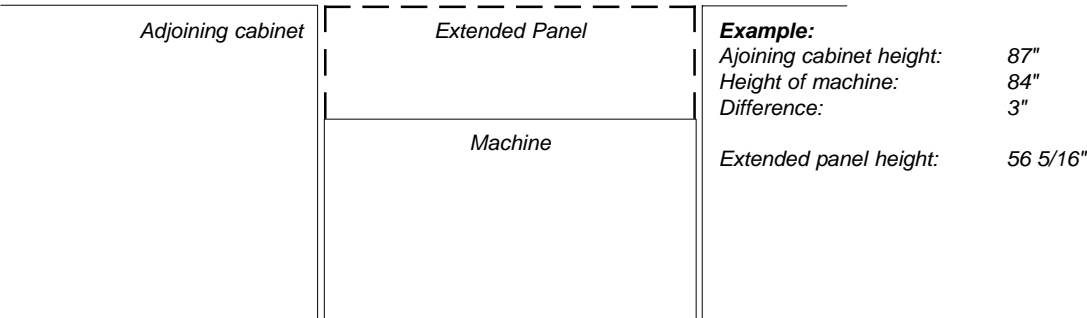
HOM = Total height of machine. Can be adjusted to match adjoining cabinets - **typically 84"**
HOM is adjustable between 83 1/2" - 85 3/8"

TKH = Toe-kick height (2" - 8 3/8")

Maximum panel weight: 100 Pounds

Upper Panel Notes

If the adjoining cabinets are taller than the height of machine (HOM) - the upper panel may be extended accordingly. Find the difference between height of the adjoining cabinets and the height of machine (HOM) and add to 53 5/16"



NOTE: Drawing is not to scale.
SPECIFICATION SHEETS 010707

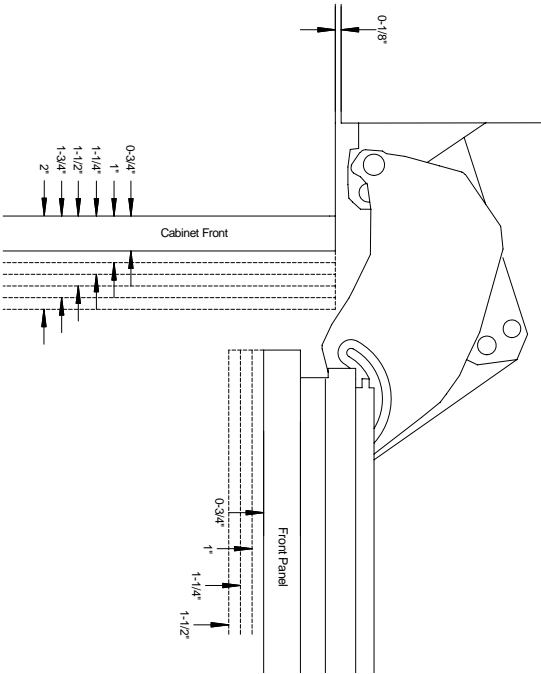
Front Panel Information

Hinging Details

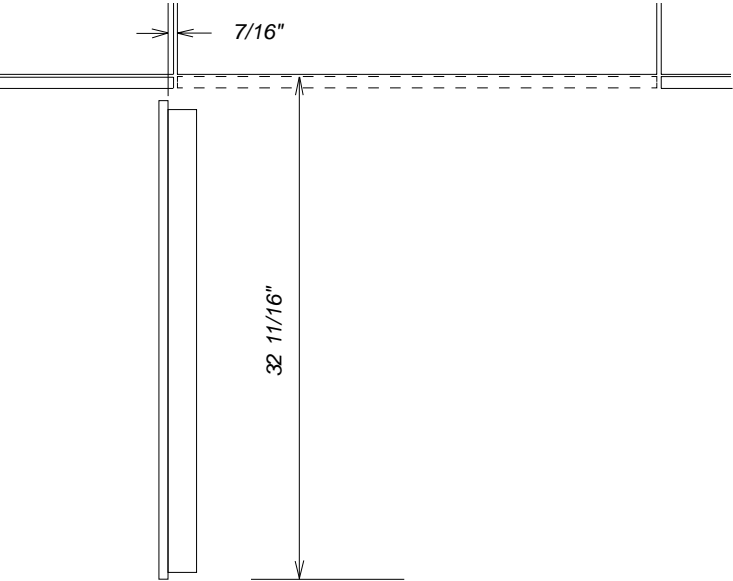


90° Door

Thickness options



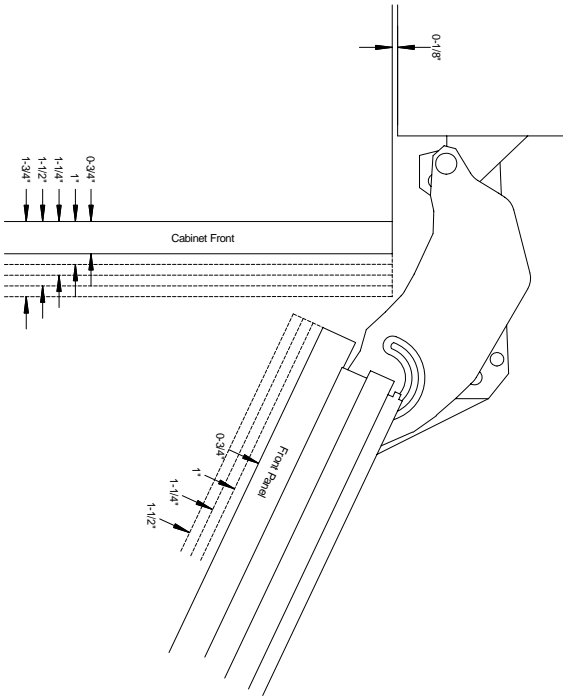
Door Swing



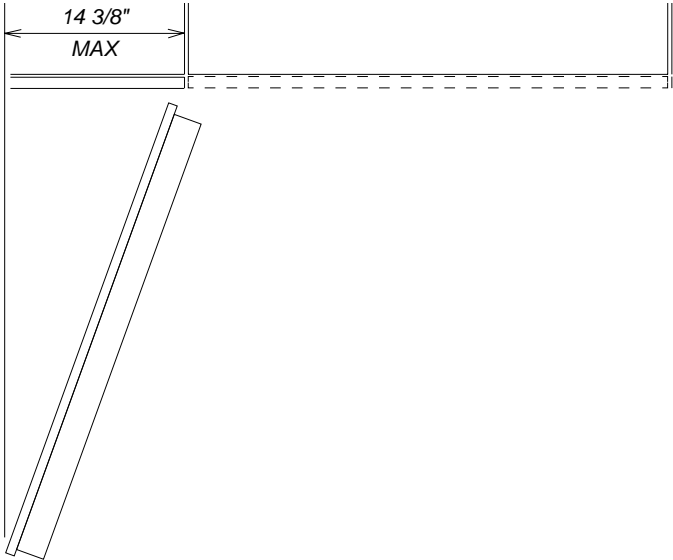
NOTE: Additional space needed depending on thickness of front panels and handle used

115° Door

Thickness options



Door Swing



NOTE: Additional space needed depending on thickness of front panels and handle used