

MIW-XT SPECIFICATIONS

AC Circuit

AC Outlets, Total:1
 Line Voltage:120V, 60Hz
 Total Current Capacity:15A

Power Inlet Faceplate

AC Connector:IEC 320 C14
 Signal Line Protection:Not Included /
 Modules Sold Separately

IEC Power Inlet Cord

Length:6 feet
 Connectors:IEC 320 C13
 NEMA 5-15P

Power Outlet Faceplate

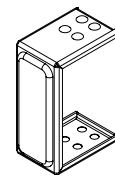
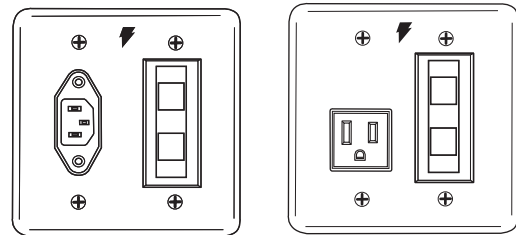
AC Connector:NEMA 5-15R
 Noise Filtration:Level 1
 Signal Line Protection:Not Included /

Flat Plug AC Power Cord

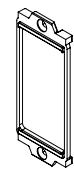
Length:11 inches
 Connectors:NEMA 5-15P
 NEMA 5-15R

CONTENTS*

One each
 In-Wall power inlet
 and outlet
 enclosure
 (mounting ears
 attached)



MIW Pass-Through Insert
(2)

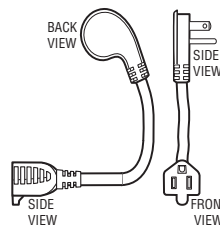


Decora®
 adapter (2)

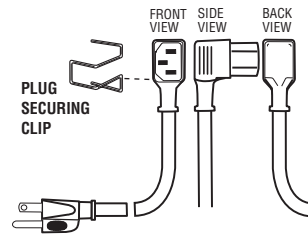


Keystone
 module insert
(2)

One 11" flat
 plug adapter
 power cord



One 6' IEC
 power cord &
 securing clip



Included Installation Accessories:

(6) Wire Nuts (2) Mounting Brackets
 (16) Mounting Screws

QUESTIONS ABOUT PF POWER PRODUCTS?

PFPower by Panamax~Furman
 1690 Corporate Circle
 Petaluma, CA 94954
 Phone - 707-283-5900 or 800-472-5555
 Fax - 707-283-5901
 Web - www.panamax.com or www.furmansound.com

Customer Relations
 7:30 AM – 4:30 PM, M-F, Pacific Time (PST)
 Email - custrelations@panamax.com

Specifications are subject to changes due to product upgrades and improvements.

© 2008 PFPower is a Trademark of Panamax, Inc
 Max In-Wall is a Trademark of Panamax

Decora® is a Registered Trademark of Leviton Manufacturing Co, Inc.



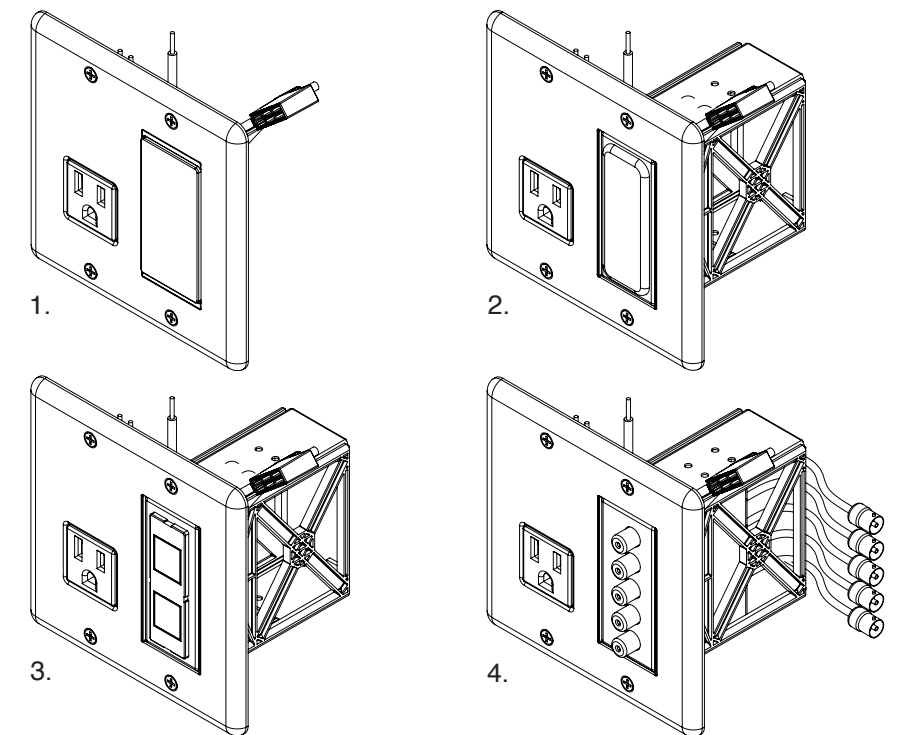
1690 Corporate Circle, Petaluma, CA. 94954
www.panamax.com or www.furmansound.com

MIW-XT

MAX IN-WALL™ POWER MANAGEMENT EXTENDER SYSTEM Installation Instructions

- Power and signal lines are hidden in the wall or behind panel displays for a clean, tidy and professional installation.
- Extend Connected Equipment Policy to remote equipment when used with Panamax/Furman Power Management components.
- Ultra-thin profile can allow equipment to hang less than one inch from the wall.
- Accommodates optional MIW Signal Line Modules (MIW modules sold separately).
- Compatible with most standard electrical boxes.
- CSA certified for code compliant installations.
- EMI/RFI noise filtration built into outlet receptacle.
- 3 Year Product Warranty.

Kit Includes Components for Four Possible Installation Configurations:



Signal line module bay provides variety of optional installation solutions by using:

1. Decora® adapter • Trim plate to accommodate a variety of audio/ video connections.
2. Pass-through insert • For Keystone adapter or rubber grommet.
3. Keystone 2-port adapter • For flexible connection capability.
4. MIW Signal Line Modules
 • MIW-5RCA • MIW-VGA • MIW-SVIDEO • MIW-DATA
 (MIW modules sold separately, contact Panamax/Furman)

* Installation options will determine which parts are used. Not all components will be utilized.

MIW-SURGE INSTALLATION INSTRUCTIONS

CAUTION:

Only for use with 15 Amp branch circuits utilizing 14 or 12 gauge wire. Make sure the branch circuit is de-energized before installation.

STEP 1:

Determine which signal line and outlet box configuration you will be using before beginning installation, as it may affect the order in which components are installed. The kit can be used with a variety of signal line products (sold separately) ; Panamax signal line modules, Keystone modules (*fig. 1*), or Decora® signal line inserts (*fig. 2*).

STEP 2:

Select a location close to the equipment. In the case of a Plasma TV, this may be behind the display device and be totally hidden from view, once the Plasma TV is mounted. Cut a 4 1/8" wide by 4 1/4" high hole in the wall for the outlet box.

STEP 3:

Run the source wire (e.g. Romex) through an opening in the outlet box (sold separately).

No more than 1" of wire sheath should extend into the outlet box. 3" of wire should be able to extend beyond the opening of the outlet box. Install the outlet box into the hole.

STEP 4:

Attach the mounting bracket to the outlet box (*fig. 4*).

If not using a dual-gang, divided outlet box, you will need to attach the Decora® assembly or module bay assembly to the mounting bracket (*fig. 3*) using the #6-32 nuts and lock washers **before** installing the mounting bracket to the wall. If using a dual-gang outlet box, you will need to remove the nuts and washers.

STEP 5:

Strip AC wire (e.g. Romex) and connect using the included wire nuts (*fig. 6*). First connect the ground wire (green insulated) on the MIW-SURGE and bare copper on the building wire. Then connect the neutral wire (white), then the hot wire (black).

[Canada uses alternate grounding configuration]

STEP 6:

Run the signal line(s) through the low-voltage signal bay.

If using the MIW Pass-Through Insert (*fig. 7*), remove the rubber grommet and cut a hole in the rubber grommet so that it fits snugly around the signal line. Pass the signal line through the Pass-Through insert, place the rubber grommet over the signal line, and put the rubber grommet back in place.

Optional Signal Protection Module Usage:

Panamax In-Wall signal protection modules (*fig. 8*) may be used to provide a clean-looking interface for the signal lines.

fig. 1 MIW-SURGE With Keystone module insert

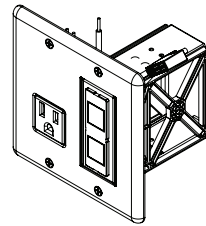


fig. 2 MIW-SURGE With Decora® adapter

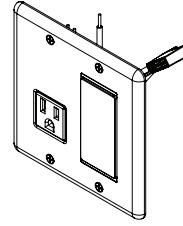


fig. 3 Mounting Bracket with Keystone trim plate option

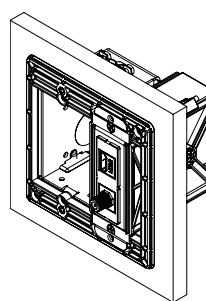


fig. 4 Mounting Bracket and wall cut-out

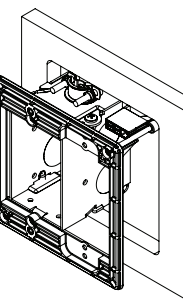


fig. 5 Mounting Bracket installed, rear view showing mounting ears

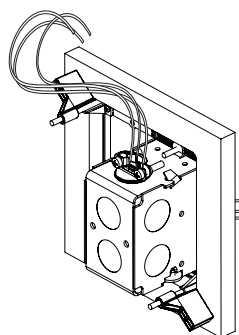


fig. 6 Rear of MIW-SURGE showing wire pigtails

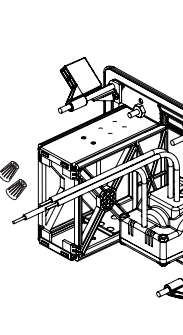


fig. 7 MIW Pass-Through Insert

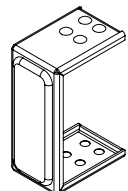
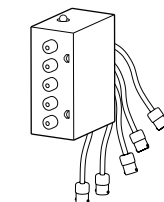
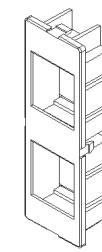


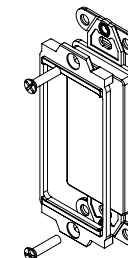
fig. 8 Panamax Max In-Wall Signal Line Protection Module



Alternate Installation Accessories



Keystone module insert



Decora® adapter

