

AUGEN PRIZM

Portable Digital Music Player

User Manual

Version: V4.0W

Thank you for purchasing an AUGEN PRISM digital music player. Please read the following user instructions and safety guide before attempting to operate your player.

The Digital Music Player Safety Guide

This safety guide contains important safety and handling

Information for AUGEN PRISM digital music players.

Keep the *digital music player Safety Guide* for your digital music player handy for future reference.

Important Safety Information

Avoiding hearing damage

Permanent hearing loss may occur if earbuds or headphones are used at high volume. Set the volume to a safe level. You can adapt over time to a higher volume of sound that may sound normal but can be damaging to your hearing. If you experience ringing in your ears or muffled speech, stop listening and have your hearing checked. The louder the volume, the less time is required before your hearing could be affected. Hearing experts suggest that to protect your hearing:

- Limit the amount of time you use earbuds or headphones at high volume.
- Avoid turning up the volume to block out noisy surroundings.
- Turn the volume down if you can't hear people speaking near you.

Handling the digital music player

Do not bend, drop, crush, puncture, incinerate, or open the digital music player.

Avoiding water and wet locations

Do not use the digital music player in rain, or near washbasins or other wet locations. Take care not to spill any food or liquid into the digital music player. In case the digital music player gets wet, unplug all cables, turn the digital music player off and allow it to dry thoroughly before turning it on again.

Repairing the digital music player

Never attempt to repair the digital music player yourself. The digital music player does not contain any user serviceable parts.

The rechargeable battery in the digital music player should be replaced only by PRIZM authorized service providers.

This player is a new generation portable digital audio & video product, which supports multi-format music files, such as MP3, WMA, WAV, etc.

General preview

- **Display:** 65K full-color CSTN/TFT screen.
- **Multi-format support:** MP3, WMA, WAV etc. music & image files.
- **Cartoon movie function:** Play AMV format movie and music files.
- **Browse pictures:** Browse JPG, BMP format pictures.
- **E-book:** Display TXT format files for reading.
- **FM stereo radio:** Search stations both automatically and manually.
- **USB drive without driver:** No need for management program software, operates directly through “moveable disk” in “My PC”,
- **“Private Space” Memory management MENU:** Refers to the memory of the player as a USB drive. Users may divide the memory into two parts in any proportion by accessing *accessory tools*. One

part can be encrypted as a “Private Space” which needs a password to access. (If users do not encrypt both parts, the player may be treated as two individual USB drives)

- **Record / Repeat:** Using the microphone, you can record voice and save them as WAV or ACT format files. Repeat a segment of the file with comparison.
- **7 equalizer MENUs:** Natural, Rock, Popular, Classic, Soft, Jazz, Dbb.
- **Multi-play MENU:** Normal, Repeat ONE, Folder, Repeat Folder, Repeat all, Random.
- **Automatic shut off:** You can set sleep timer to save battery time.

GETTING STARTED

- Attach the player to your computers USB connector with the provided USB cable
- Please set the power switch to the “**ON**” position to charge the player, otherwise, the player cannot be charged.


- Very important: The MENU button is the ENTER or SELECT button and the arrow buttons are the scrolling buttons as well as track skip and fast forward and rewind. Scroll with the ARROW buttons and choose function by hitting the MENU button. Center button is PLAY.


General preview	2
Declaration	3
Battery	4
Basic function	6
Button operation	8
Play movies	12
Play music	13
Voice recording	15
Voice MENU	16
FM radio	19

Browse photos	20
E-book	20
System setting	21
USB drive function	24
Other setting	25
Troubleshooting	34
Specification	35
Convert video files into AMV format files	36

Battery

The PRISM comes with a built-in Li-polymer rechargeable battery. It can be charged using either the supplied USB cable or an optional AC charger adapter.

- ★ Set the power switch to “**ON**” position (**Switch ON** the player) to charge the battery, otherwise the player cannot be charged.
- ★ Unit will display  when the battery is fully charged.

- ★ When the battery is nearly drained, the battery icon  will show empty. This indicates it is time to re-charge your battery.

Basic function

Enter Menus

Press MENU button to enter the menu which you desire. There are 3 basic menus,





1- Main-menu (press & hold MENU button to enter main menu to choose basic function of device such as music, picture, movie, etc...),

2-Play menu (Press MENU button while playing to adjust EQ, repeat MENU, etc...)

3-Stop menu (Press MENU button to stop play).

Browse operation

- Use arrow buttons to browse and select a song, or a menu.

- Press MENU button to select a song
- To move backward use left arrow , to move forward use right arrow. 
- Use same procedure to skip forward or skip backward while song is playing.
- Press and hold arrow buttons to fast forward  or rewind  while song is playing.

Enter function MENUs

- Scroll with arrow buttons to search for the desired menu and hit menu button to select the menu you wish to enter.

- To return to main menu, press and hold the menu button for a few seconds.

- The main menu consists of 8 choices:

01 Music / 02 video / 03 Recorder / 04 playback / 05 FM Radio / 06 Photo /
07 E-book / 08 setting

- To adjust volume:

Press button **VOL** first, then press button left arrow  to decrease the volume, press right arrow

button **▶▶** to increase the volume.

- Electrical system ON/OFF (This is different from power ON/OFF)

Press and hold the play button for electrical system power on/off.

Button operation

Button function introduction:

◀◀ Left arrow stands for **Last**, or **Vol-**. Right arrow **▶▶** stands for **NEXT** or **Vol+**, **Vol** for **volume**

Video MENU

Button	Operation	Stop status	Play status	Stop-submenu
Play	Long press	Switch off	Switch off	Switch off
	Press	Play	Stop	Exit from menu
MENU	Long press	Enter Main-menu	Enter Main-menu	Enter Main-menu
	Press	Enter Stop-submenu	X	Confirm the choice or further step
Right arrow button	Press	Right arrow button song	Play right arrow button song	Select a submenu
	Long press	forward browse continuously	Fast forward	forward continuously
Last	Press	Last song	Play last song	Select a submenu
	Long press	Backward browse continuously	Fast backward	backward continuously

Vol+	Press	Increase volume by step	Play right arrow button song	X
	Long press	Increase volume continuously	Fast forward	X
Vol-	Press	Decrease volume by step	Play last song	X
	Long press	Decrease volume continuously	Fast backward	X

Music MENU and Play MENU

Button	Operation	Stop status	Play status	Play-submenu	Stop-submenu
Play	Long time press	Switch off	Switch off	Switch off	Switch off
	Press	Play	Stop	Exit from menu	Exit from menu
MENU	Long time press	Enter Main-menu	Enter Main-menu	Enter Main-menu	Enter Main-menu
	Press	Enter Stop-submenu	Enter Play-submenu	Confirm your choice and enter it	Confirm your choice and enter it
Right arrow button	Press	Right arrow button song	Play right arrow button song	Select a submenu	Select a submenu
	Press and hold	Browse forward continuously	Fast forward	Move forward continuously	Move forward continuously
Last	Press	Last song	Play last song	Select a submenu	Select a submenu
	Press and hold	Browse backward continuously	Fast backward	Move backward continuously	Move backward continuously
Vol+	Press	Increase volume by step	Increase volume by step	X	X
	Press and hold	Increase volume continuously	Increase volume continuously	X	X
Vol-	Press	Decrease volume by step	Decrease volume by step	X	X
	Press and hold	Decrease volume continuously	Decrease volume continuously	X	X

Record MENU

Button	Operation	Stop status	Record status
Play	Long press	Switch off	Stop recording
	Press	Start recording	Pause recording
MENU	Long press	Enter Main-menu	Save recorded file
	Press	Enter Record-submenu	X

FM MENU

Button	Operation	FM radio status	FM submenu
Play	Long time press	Switch off	Switch off
	Press	Right arrow button channel	Exit from menu
MENU	Long time press	Enter Main-menu	Enter Main-menu
	Press	Enter a submenu	Confirm your choice and enter it
Right arrow button	Press	Increase by step 100KHz, or stop searching	Select a submenu
	Press and hold	Increase step by step 100KHz automatically	Move forward continuously
Last	Press	Decrease by step 100KHz, or stop searching	Select a submenu
	Press and hold	Decrease step by step 100KHz automatically	Move backward continuously
Vol+	Press	Increase volume by step	X
	Press and hold	Increase volume continuously	X
Vol-	Press	Decrease volume by step	X
	Press and hold	Decrease volume continuously	X

Browse pictures

Button	Operation	Stop status	Play status
Play	Long press	Switch off	Switch off
	Press	Start	Stop
MENU	Long press	Enter Main-menu	Enter Main-menu
	Press	Enter a submenu	X
Right arrow button	Long press	Move forward continuously	forward continuously
	Press	Step forward	Step forward
Last	Long press	Move backward continuously	Backward continuously
	Press	Step backward	Step backward
Vol+	Long press	X	X
	Press	X	X
Vol-	Long press	X	X
	Press	X	X

E-book

Button	Operation	Menu status	Play status
Play	Long press	Switch off	Switch off
	Press	Start	Stop
MENU	Long press	Enter Main-menu	Enter Main-menu
	Press	Enter a submenu	X
Right arrow button	Long press	Move forward continuously	forward continuously
	Press	Step forward	Step forward
Last	Long press	Move backward continuously	Backward continuously

	Press	Step backward	Step backward
Vol+	Long press	X	X
	Press	X	X
Vol-	Long press	X	X
	Press	X	X

Play movies



Movie MENU

1. Movie MENU interface.	2. Press MENU button to enter the Play-submenu
3. Press MENU button to quit submenu	4. Press play button to start playing files.








Play music

Simply operation

1. Connect earphone Connect the earphone plug into the jack on the player.	2. Playing music Press and hold the Play button to switch the player ON (only if the device is in "Sleep time" mode), enter the music MENU, then press the Play button to start playing music.
---	---

<p>3. Select a track</p> <p>Left arrow LEFT ARROW BUTTON: Select the last song</p> <p>Right arrow Button Right arrow button: Select the right arrow button song</p>	<p>4. Volume control</p> <p>Press the button VOL and then press  right arrow for increasing  volume, left arrow for decreasing volume</p>
--	--

Equalizer MENU

1. When the player is playing music	2. Press MENU button to enter the EQ sub menu
3. Press right arrow to scroll to equalizer button to select Equalizer MENU.	4. Press MENU button to enter Equalizer MENU.
5. Press button either arrow button to select, and press MENU button to confirm.	<p>6. Equalizer introduction (EQ):</p> <p> (Natural) /  (Rock) /  (Pop) /  (Classical)</p> <p> (Soft) /  (Jazz) /  (DBB)</p>

Lyric display (Karaoke function)

This player supports “*.LRC” lyric files, and lyrics may be displayed synchronously while playing music.


How to use lyric file

Save the lyric file with the same name as that of the corresponding music file.

For example:

Music file name: Andy-water.mp3

Lyric file name: Andy-water.lrc

The icon  displays on the bottom-right corner in music MENU, if there is a lyric file that matches the music file.

How to display lyric

1. Find a track with the lyric icon.	2. press and hold the menu button to enter lyric interface
3. Display the lyric.	4. Press MENU button to return to music MENU.

Voice recording

Record MENU”

1. Enter main menu.	2. Press LEFT ARROW BUTTON to select record MENU.
3. Press MENU button to enter record MENU	4. Press Play button to start recording.
5. After recording, press and hold MENU button to save the recorded file.	



If the screen displays “Full”, it means there is no capacity for recording new recorded files. Delete old files to free up space for new recordings.

Select recording file format

1. Record stop interface.	2. Press MENU button to enter record submenu.
3. Press right arrow button to select “type of recording”-submenu Type of recording:	4. Press MENU button to enter this item. Recording type interface:
5. Press Right arrow button to select recording type.	6. Press MENU button to confirm your choice.
7. Press play button to start recording.	8. Type of recording: High quality recording: WAV format. Long time recording: ACT format, normal quality. High quality voice control: WAV format Long time voice control: ACT format.

Voice MENU

1. Enter main menu	2. Press Right arrow button to select “voice MENU”.
3. Press MENU button to enter the voice MENU interface.	4. Press play button again to start playing.
5. Select a recorded file. LEFT ARROW BUTTON: Select last file. Right arrow button: Select right arrow button file.	6. Control volume: press VOL button then press right arrow button VOL+ : Increase volume. LEFT ARROW BUTTON VOL - : Decrease volume.

FM radio

1. Enter the main menu.	2. Press Right arrow button to select "FM MENU".
3. Press MENU button to enter "FM MENU".	4. Search automatically: Press Right arrow button for more than 2 second, player searches at the step of 100KHz backward/forward until it finds a station. Just press button Right arrow button to stop searching.
1. Inching adjust: Press LEFT ARROW BUTTON : Step backward at 100KHz Press Right arrow button : Step forward at 100KHz	6. Save desired radio station: Press MENU button to enter FM submenu. and then press MENU to save it.
7. Select a saved station frequency for listening. If there is more than one station being saved, you can press play button to skip through preset stations one by one.	8. Control volume: Press Vol , and then press LEFT ARROW BUTTON : Increase volume. Right arrow button : Decrease volume.
9. Built in recording Press MENU button to enter FM submenu, select recording MENU.	Notice: There are two bands, "Normal band" (FM 87 - 108MHz) and "Japan band" (FM 76 - 90MHz). (Press MENU button to enter FM submenu, press Right arrow button to select the proper band)

Browse photos

1. Enter main menu	2. Press Right arrow button to select "Photo browse" .
--------------------	---

3. Press MENU to enter “Photo browse”	4. Press play button to enter Photo browse MENU. Press play button again to quit. LEFT ARROW BUTTON: Select last file button Right arrow button: Select right arrow button file
5. Press MENU button to enter photo browse submenu	6. Press button Right arrow button , select “browse photo” submenu
7. Press MENU button to enter playing setting interface.	8. Enter automatic playing submenu.

E-book

1. Enter main menu	2. Press button Right arrow button to select “Ebook”
3. Press MENU button to enter “E-book” submenu	4. Press play button to enter E-book MENU. Press play button again to quit. LEFT ARROW BUTTON: Select last file button Right arrow button: Select right arrow button file
5. Press MENU button to enter E-book submenu.	6. Press Right arrow button , select “E-book ” submenu item.
7. Press MENU button to enter playing setting interface.	8. Enter automatic playing submenu.

System setting

How to enter

1. Enter main menu	2. Press Right arrow button to select “System”。
--------------------	--

3. Press MENU button to enter “System”	
--	--

Features introduction

Message	Show the manufacturer information
LCD setting	Set the screen brightness and dark MENU(optional).The player’s screen will go dark without operation after the time (Unit: second) you set
language	Set a language
power off	Set a automatic power off or sleep timer. The player will power off or sleep automatically after the time you set
Interface sel	Set interface one(static) or interface two(dynamic).
Replay MENU	Set manual replay or auto replay
Online MENU	Only for “Secret space ” function
Memory info	Check memory capacity and free volume
Firmware version\upgrade	Display firmware upgrade version of this player
Exit	Exit from present interface

How to use

- message

Show the manufacturer information

- “LCD set” setting

1. System interface	2. Press button Right arrow button to select “LCD set”。
---------------------	--

3. Press MENU button to enter	4. Press button Right arrow button/Last to adjust Notice: When set gray MENU and black screen MENU, you can only select one of them. Press MENU button to confirm entering submenu, the operation are the same as Brightness adjust.
5. Press MENU button	6. After adjusting, press MENU button to exit.

- “Select language” setting (Refer to “EQ MENU” setting.)
- “power off” setting (Refer to “LCD set” setting.)
- Interface sel: set interface one(static) or interface two(dynamic)
- “Replay MENU” (Refer to “EQ MENU” setting)
- Notice : “Manual MENU”: Repeat from A to B. / “Automatic MENU”: Repeat sentences automatically.
- “Online MENU” (Refer to “EQ MENU” setting)
- “Memory info”

The number stands for the total capacity, percentage stands for used capacity proportion.
- “Firmware version\upgrade ”

Display the player’s present firmware version.

Use as a USB drive

This player can be used as a standard USB drive, which supports Windows98 (need to install drive program)、Windows 2000 above (no need to install drive program) system, Mac OS X 10.3 and above, Linux Red hat 8.0 and above.

This player supports USB power supply, playing without battery. Under the “waiting status”, press MENU button, return to main menu, and select the MENU what you want and enter it.

This player supports Suspend MENU.

How to connect your PC

Switch on the player, and plug the USB cable, then the player will enter MENU 1 as below.

Upon connecting the PC, there are 3 kinds of display MENUs as follows:

1. Waiting status,
2. Downloading,
3. Uploading.

Other setting

Select different items (Stop sub-menu)

Customer can save different files in different folders (You have to determine the folder in advance), in order to sort and manage the files.

1. In Stop interface. (For example, in music MENU, record and play can select an item.)	2. Press MENU button to enter Stop-submenu.
3. Press MENU button again to enter your choice.	3. Press Right arrow button or Last to select.
5. Press MENU button to confirm your choice.	

- **Notice:** You can set music MENU, record MENU and play MENU in different independent folders.

That is, the 3 MENUs can be saved in different MENU.

Delete files (Stop-submenu)

Under music, voice, movie and FM MENU, you can delete files or station frequency.

1. Under stop menu. (There isn't a interface in FM status)	2. Press MENU button to enter stop-submenu.
3. Press Right arrow button or Last and select "delete files" in the menu.	4. Press MENU button the enter delete interface.

5. Press MENU button to enter right arrow button submenu.	6. Press Right arrow button to confirm, start deleting.
7. Press MENU button to enter a menu and select "delete files" , " delete all" or " Exit".	8. After selecting, press MENU button.

“delete all” means, delete all the relative files in present folder. (For example, you are in music MENU, “delete all” can delete all music files, but leaves the record files.)

FM delete wipes out preset stations, only the 1st 3 steps are necessary



Notice: When you delete files in your computer, please make sure to remove the USB cable after it displays the player interface, otherwise, the files may not to be deleted.

Repeat MENU (Play sub-menu)

When you play/stop music and play voice recording files, you can select different playing MENU such as repeat, shuffle, etc.

The 3rd item in Stop menu is “repeat MENU”, The unit plays according your selection.

1. Stop music	2. Press MENU button to enter Play-submenu.
3. Press Right arrow button to select “Repeat MENU item.	4. Press MENU button to enter “Repeat MENU” item.

5. Press Right arrow button to select, then press MENU button to confirm.	
---	--



Notice: In music MENU, you can set repeat MENU, even if the player is in stop music submenu or play music submenu. Once you set one, you set the whole play MENU. The operation method is the same.

○ REPEAT

Normal	Play music files in sequence until the end of folder.
Repeat One	Repeat one music file.
Folder	Play all music files in the folder
Repeat Folder	Repeat all music files in the folder
Repeat All	Repeat all music files.

○ SHUFFLE

Random	Play music files in present folder randomly.
--------	--

○ INTRODUCTION

Introduction	Play the beginning 10 seconds of music files in sequence
--------------	--

Select music MENU

1. Music stopping.	2. Press MENU button to enter stop-submenu
--------------------	---

3. Press MENU button to enter Local folder.	4. Press Right arrow button to "Select music" item. Select a song:
--	---

Play speed (Play sub menu)

When you play music ([only available for MP3 files](#)) and play record files, you can choose different speeds. (fast or slow), but the tone is the same as original.

1. Playing music	2. Press MENU button to enter Play-submenu.
3. Press Right arrow button to select "Playing speed" item.	4. Press MENU button to enter "Playing speed" item. Play speed choice:
5. Press Right arrow button to increase playing speed, press LEFT ARROW button to decrease playing speed.	6. Notice: All music playing speed is the same until right arrow button is set.

Repeat MENU (Play sub menu)

- Enter play submenu:
- A-B repeat

1. Playing music or voice recording	2. Press MENU button to enter Play-submenu.
3. Press Right arrow button to select "Repeat MENU" item.	4. Press MENU button to enter "Repeat MENU". Repeat MENU: Mark A flash in repeat icon, waiting for beginning A confirmation.

5. Press Right arrow button , Confirm Beginning point A. Then the repeat icon flash waiting for confirmation of End point B.	6. Press Right arrow button , confirm End point B. Then the icon will appear without flashing. The player starts repeating between the segment A & B for the times you set; You can re-set by pressing LEFT ARROW button. (For the repeat times, please refer to right arrow button item: “Repeat times”)
---	--

○ Following-up reading

1. Repeating A-B segment.	2. Press Right arrow button to enter follow-up reading MENU.
3. Repeat icon “” change to follow-up reading icon, starting recording voice, the period is the same as A-B repeat’s.	4. Once finished the follow-up reading, the player will play the original voice, and the icon return as before “”, At the present, you can press the Right arrow button to enter comparison function.



In this situation, press LEFT ARROW BUTTON to return “A-B repeat” status.

○ Comparison function

1. Enter comparison function, the icon appears as “”, at this time, it plays original voice.	2. After playing original voice, the icon changes to “”, at the same time, the player will play follow-up voice.
3. The player doesn’t stop the loop until you press MENU button to exit.	



In this situation, Press LEFT ARROW BUTTON to return “Follow function” status.



In the above state, press MENU button to exit repeat MENU.

Repeat times (Play-submenu)

1. Play music	2. Press MENU button to enter Play-submenu.
3. Press Right arrow button to select “Repeat times” item	4. Press MENU button to enter “Repeat times”. Press MENU button again to exit.

Repeat interval (Play-submenu)

Refer to “Repeat times” Set the repeat interval (Unit: second) .

● Secret Space

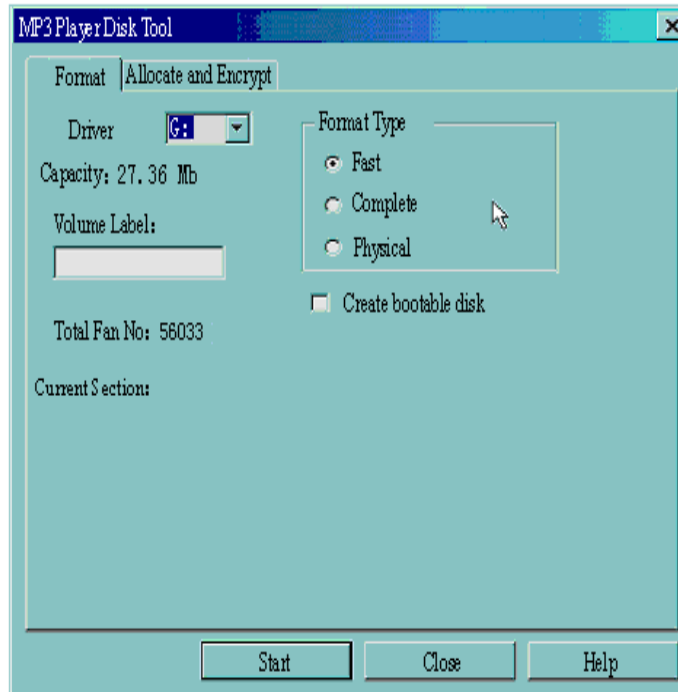
Some users may wish to hide files or tracks they do not want others to find.

You can use provided software to divide the whole USB disk into two parts, and encrypt one of them.

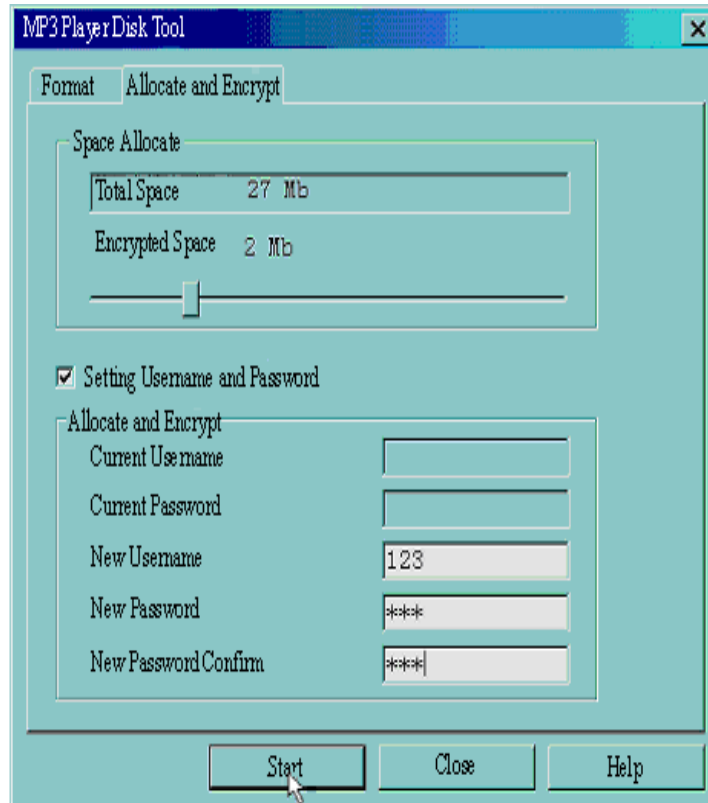
You can move your private files into the encrypted part and they will be password protected.

To active ‘Secret Space’:

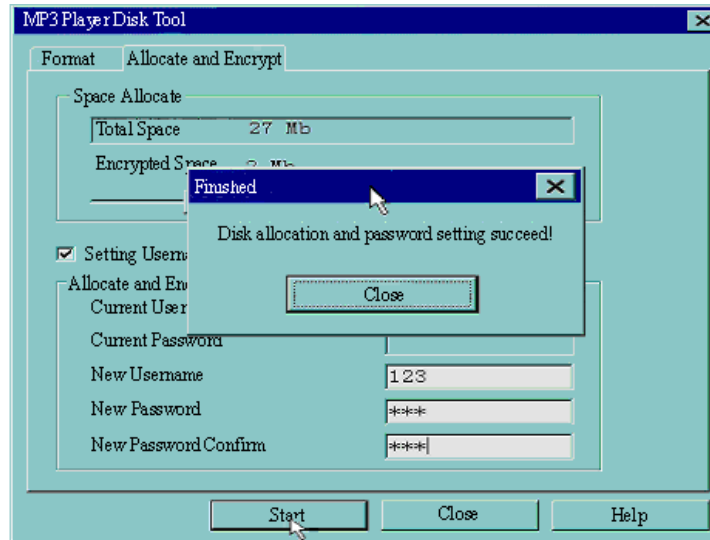
1. Connect your player to PC
2. Run *MP3 Player Disk Tool* which can be found in provided CDROM



3. Click 'Allocation and Encrypt' card, Allocate appropriate space and set username and password, and then click Start.

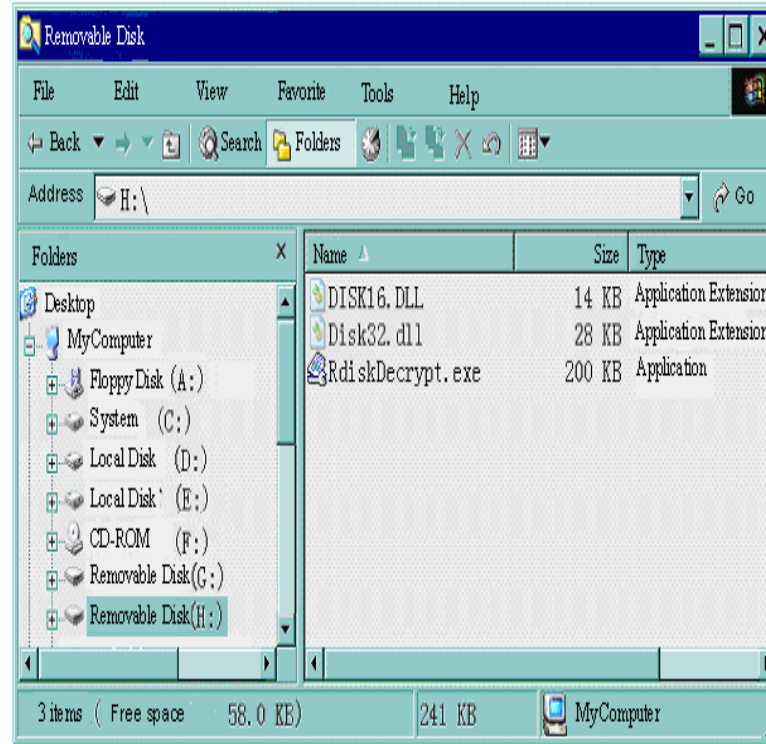


4. After space allocation, shown as below:

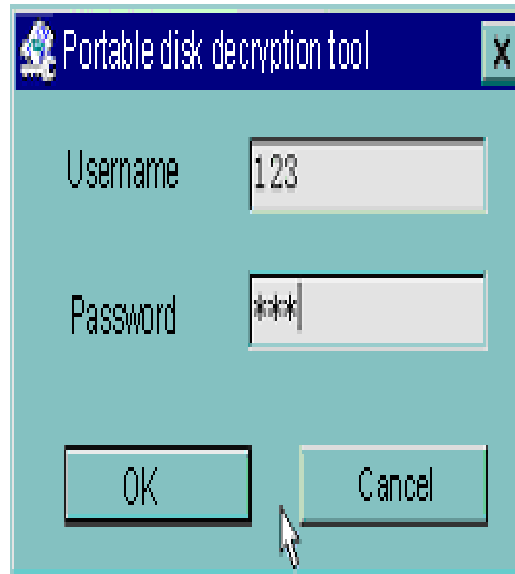


5. Click 'OK' to restart.

6. After restart you will find two disks (only one disk can be seen on Windows 2K SP4 or prior), click the encrypted disk (the second one), you will find three files, two are hidden, one is executable



7. Running executable file 'RdiskDecrypt.exe' and input username and password. If all are correct, disk will be opened, and files can be copied into.



8. You must enter username and password each time you want to access the encrypted disk.



Warning: Dividing one disk into parts will remove all data, and so does combine process.



Warning: Please remember username and password. If you forget it, you can only redo the combine process and you will loss all encrypted data.

Troubleshooting

No power	<p>Check whether the player is turned ON.</p> <p>Check whether the battery has been charged.</p> <p>Check whether you set the power switch button to “ON” position when you charge the player.</p>
No sound is heard from the earphone	<p>Check whether the Volume is set “0” and connect the earphone plug to the jack on the player firmly.</p> <p>Check whether the earphone plug is dirty.</p> <p>Corrupt music files may make a static noise or the sound can’t be heard. Check the files.</p>
Characters on display are corrupt	<p>Check whether the right language has been selected.</p>
FM radio is not clear	<p>Adjust the position of the earphone and player.</p> <p>Turn off the power of other electric devices near the player.</p> <p>The earphone may be used as the antenna.</p>
Can’t download music files	<p>Check whether USB cable is damaged and is connected properly.</p> <p>Check whether the drive program is installed correctly.</p> <p>Check whether the player’s memory is full.</p>



Specification

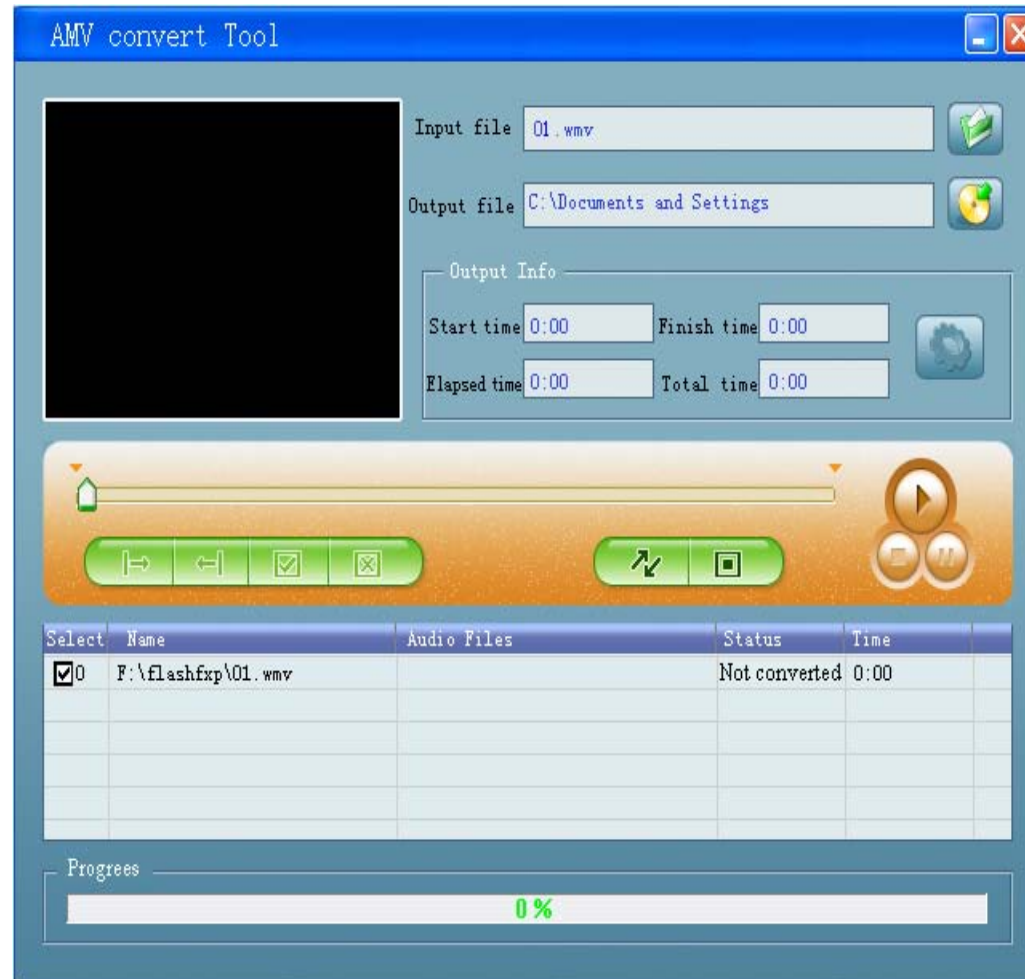
Display	full-color CSTN/TFT screen	
PC connection	Full speed USB2.0	
Memory	Flash memory 128MB/256MB/512MB/1GB/2GB/4GB	
Battery	Li-polymer rechargeable battery	
Record	Sample rate	8KHz


	Recording format	WAV (32K bps)、ACT (8K bps)
MP3, WMA, WMV etc.	Max headphone output	(L) 10mW+ (R) 10mW (32Ohm)
	AMV bit rate	128K bps
	MP3 bit rate	32K bps – 320 K bps
	WMA、WMV .bit rate	5K bps – 384K bps
	Frequency response	20Hz to 20KHz
	SNR	85dB
FM Stereo Radio	Frequency range	76MHz – 90MHz / 87MHz – 108MHz
	Stations	20 / 20
	Max headphone output	(L) 10mW+ (R) 10mW (32Ohm)
	SNR	45dB
Music Format	MP3、WMA. etc.	
Working Temperature	-5 to 40 Celsius degree	
Language	English, Spanish	
Operating System	Windows98/SE/ME/2K/XP、Mac OS 10、Linux 2.4.2	

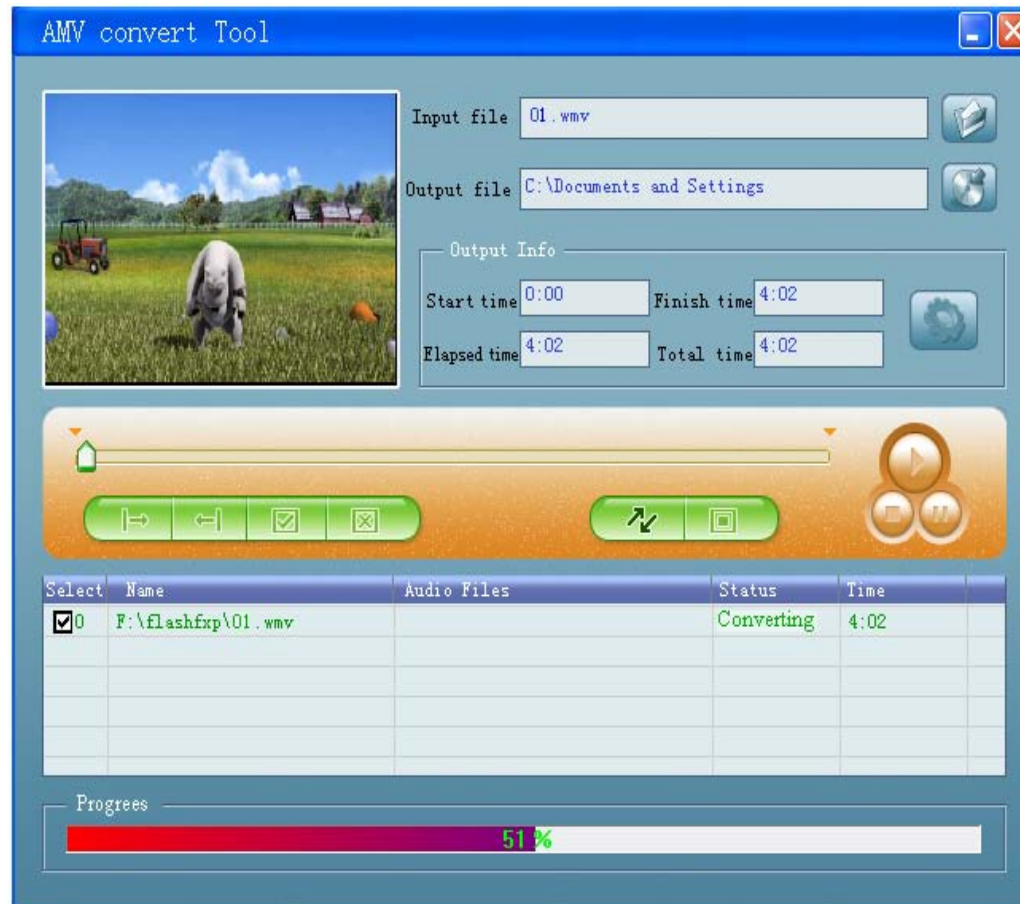
Convert Video files into AMV format ones

This program is used to convert video files into AMV format, currently only WMV format is supported.

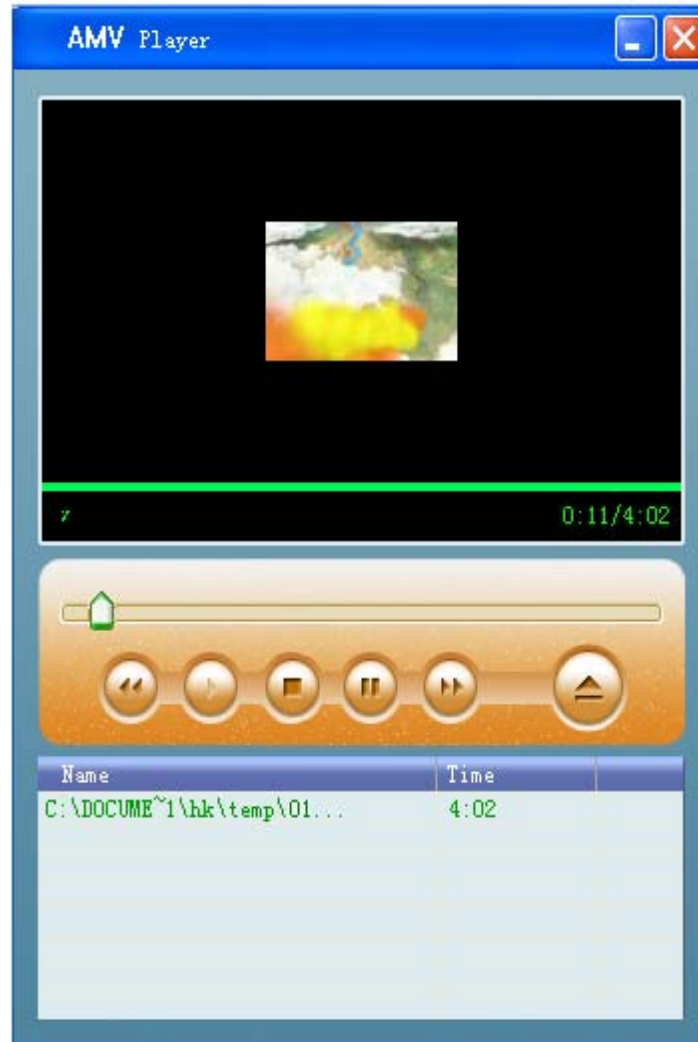
1. Run “AMV Convert Tools”, click  to choose the folder where you want to save the AMV files, then click  to select the folder where the original files are .



2 . Click  to start converting.



3. After conversion, the AMV files will be played automatically.



Webste: www.augenus.com

Phone Number: 1-888-AugenOK

Address:230 N Dixie Hwy Bay#23 Hollywood,FI 33020