

CICADA

AUDIO



14CHDLID8
14CHDLID8R
INSTALLATION GUIDE

SADDLEBAG & LID DISASSEMBLY



Remove Saddlebags from H-D® Motorcycle

- Remove (2) bag retainer bolts located on the upper left and right side of each bag. These typically can be removed by hand.
- Place saddlebags on soft surface to avoid damage.

Remove Saddlebag Lid and Hinge from Lower

- Step 1: Remove (2) x T20 screws that hold strap to lid. Take care not to damage lid.
- Step 2: Remove (2) x T20 screws for fabric retention strap to lower bag.
- Step 3: Remove the (2) x T20 screws that secure the hinge to the lower bag. This will separate the bag from the hinge and lid.

Remove from each Lid:

- Step 1: Lever handle, remove (1) T20 on rear of handle.
- Step 2: Latching mechanism, remove (4) #2 Phillips Screws.
- Step 3: Hinge, remove (5) T20 screws and (2) #2 Phillips Screws.

PREPARATION

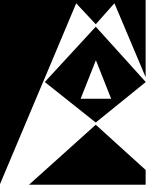


Test Fit Components, Wiring and Accessories:

- Sealed rear divider baffle. (Optional, included for use with CMB10.S4)
- 8" mid-bass or coax loudspeakers.
- Speaker grill, bezel and grill mounted tweeter.

Disassemble and perform any surface prep and painting (CHDLID8/CHDLID8R), see your local motorcycle paint specialist.

DAMPING INSTALL



CICADA AUDIO
.COM

- Clean off surfaces with damp cloth and alcohol or adhesive remover. Dry thoroughly.
- Identify the Left and Right side damping kits.
- Install die cut damping sheets in the following locations:
 - Interior of Lid.
 - Top of Latch assembly structure.
 - Bottom of Latch assembly structure.

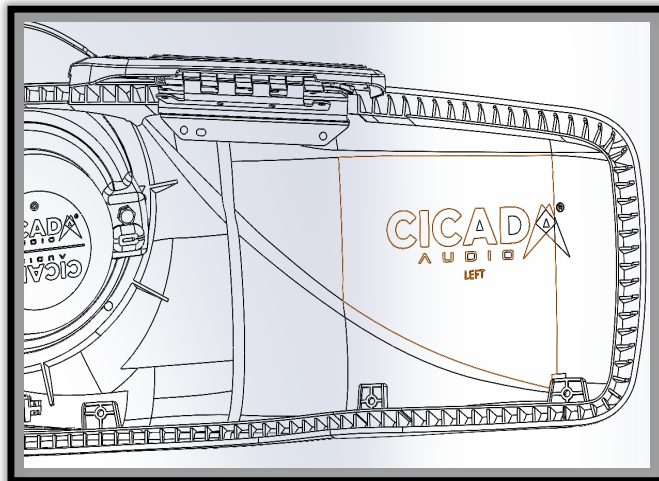


Figure 1 - LID8 Interior

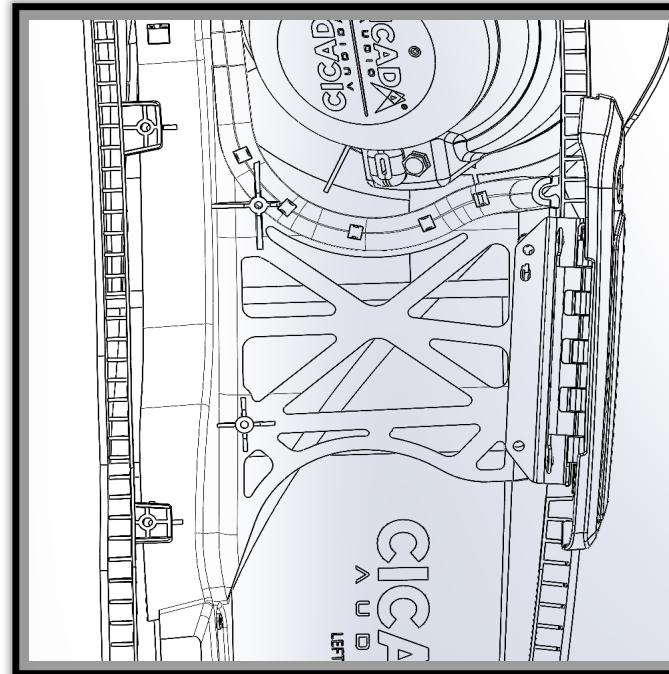


Figure 2 - Bottom of Latch

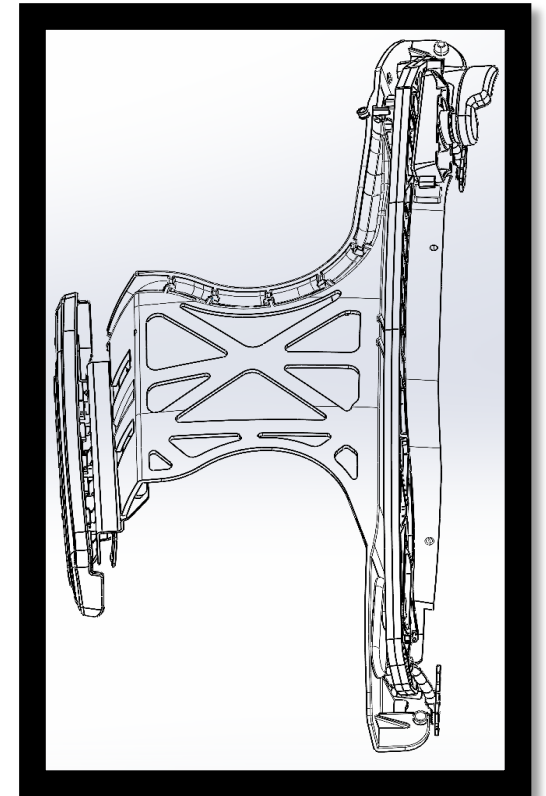


Figure 3 - Top of Latch

14CHDLID8 ASSEMBLY



CICADA AUDIO
.COM

Transfer Components from Stock Lid into the new 14CHDLID8 in the following order:

- STEP 1: Latch mechanism, using (4) #2 Phillips screws [**RED**]
- STEP 2: Hinge, using (2) #2 Phillips screws & (5) T20 screws [**BLUE**]
- STEP 3: Lever handle, single T20 screw [**GREEN**]

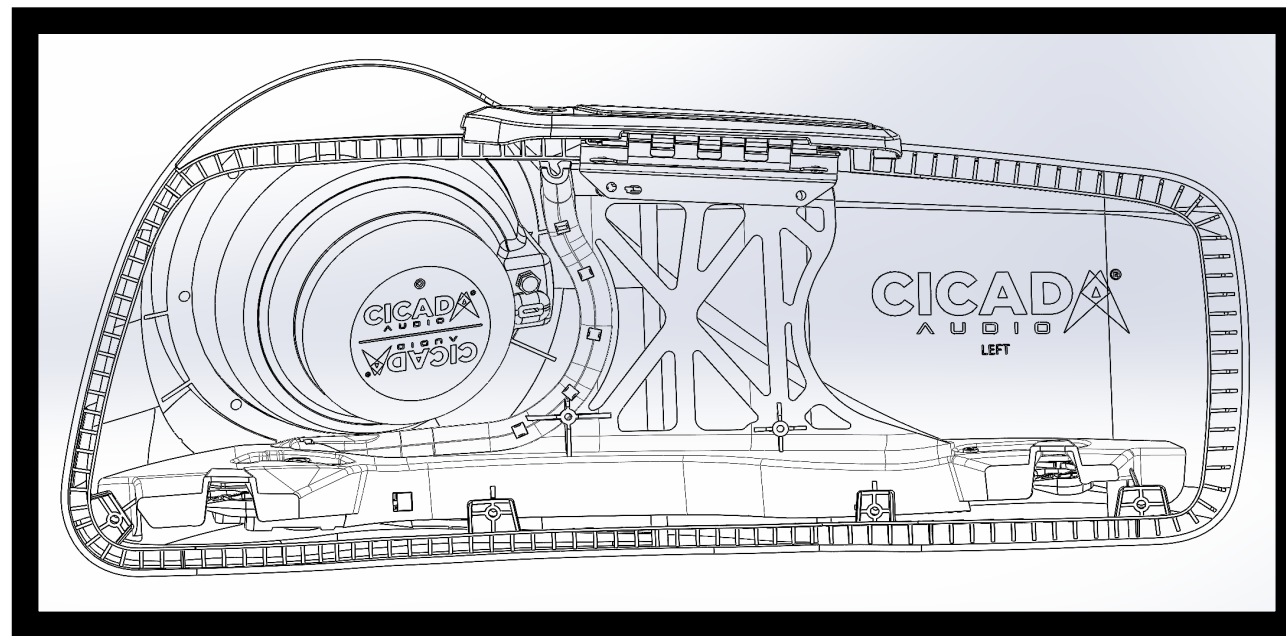


Figure 4 - LID8 Interior

14CHDLID8 ASSEMBLY



CICADA AUDIO
.COM

- Install optional sealed divider from outside (see Figure 5). The wire output of the divider should exit towards the rear of bag. This allows easy wire management to the CHDJS crossover pouch.
- Use the correct speaker wire grommet for a 2 wire or 4 wire application, see Figures 6 & 7.

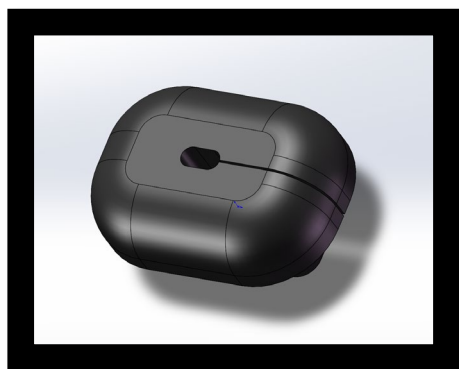


Figure 6 – 2 Wire Grommet

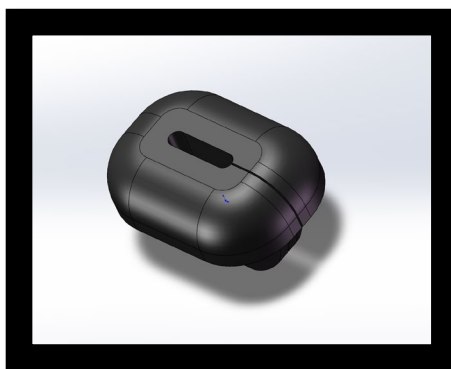


Figure 7 – 4 Wire Grommet

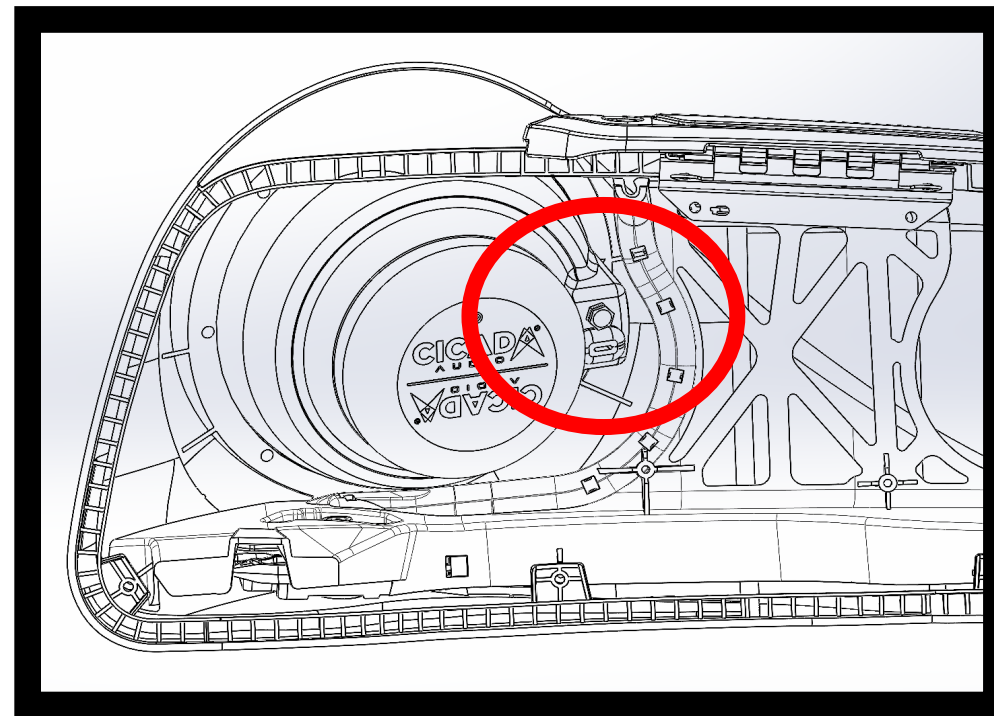


Figure 5 – 4 Divider Orientation

14CHDLID8 ASSEMBLY

8" Speaker Mounting

- For CHX & CMX models mount speaker using 12, 3, 6, and 9 o'clock positions first, leaving others for next step
- For CH & CM models use alternative 1:30, 4:30, 8:30, and 10:30 clock positions to mount all components.

8" Grill, Bezel and Grill Mounted Tweeter

- When using the grill mounted Tweeter. Tweeter wire should be routed thru opening and along slot on the back of grill bezel at 12 o'clock.
- Mount Grill and Bezel through remaining 1:30, 4:30, 8:30, and 10:30 clock screw positions.

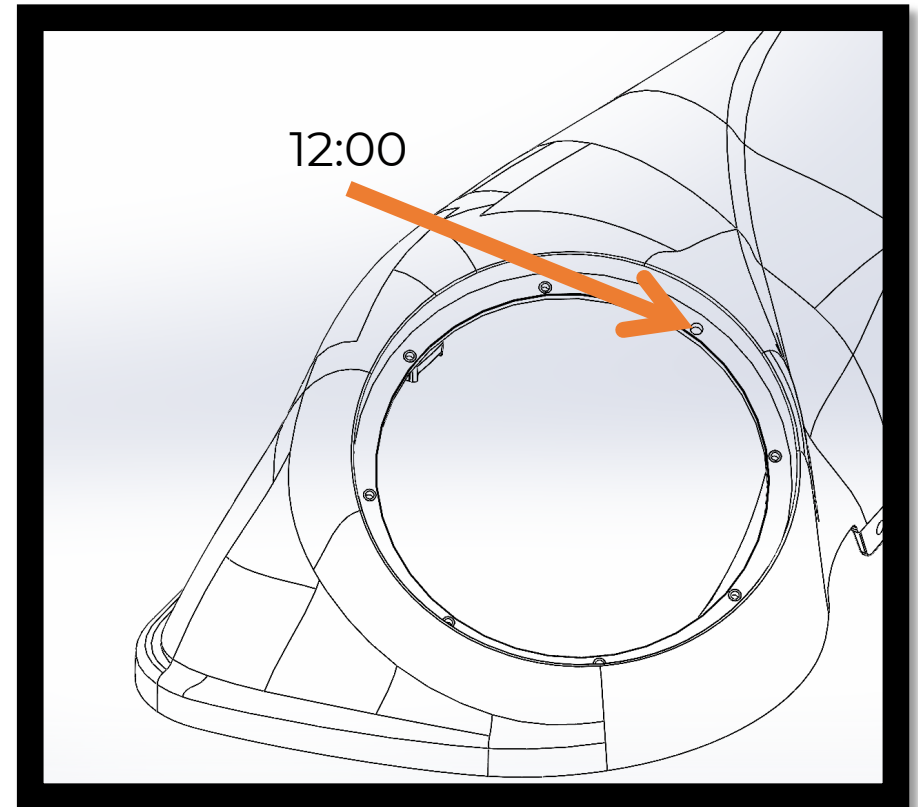


Figure 8 – 8" Speaker Mounting

14CHDLID8 ASSEMBLY



Assemble Saddlebag Lid and Replacement CHDJS Hinge from Saddlebag Lower

- Using (4) T20 screws for CHDJS fabric retention strap and hinge to bag lower.
- Using (2) T20 screws that hold CHDJS fabric retention strap to lid.
- Be sure to run speaker wire under strap thru notched section on CHDJS.
- **Attach saddlebags to motorcycle**
 - Reattach (2) x 5/16" screws per bag that secure to the bike frame. Use appropriate Allen Wrench or hand ratchet lever to tighten.

14CHDLID8 GASKET INSTALL

THIS IS A VERY IMPORTANT STEP TO KEEP YOUR BAGS SEALED FOR BEST MID-BASS PERFORMANCE!

- Apply Adhesion Promoter to outer solid wall of channel [ORANGE], see Figure 9.
- Replace with included new stiffer gasket by peeling backer and applying the adhesive side to the outer solid lip wall instead of the ribbed bottom of the recess. This creates a better seal between the lid and bag lower.

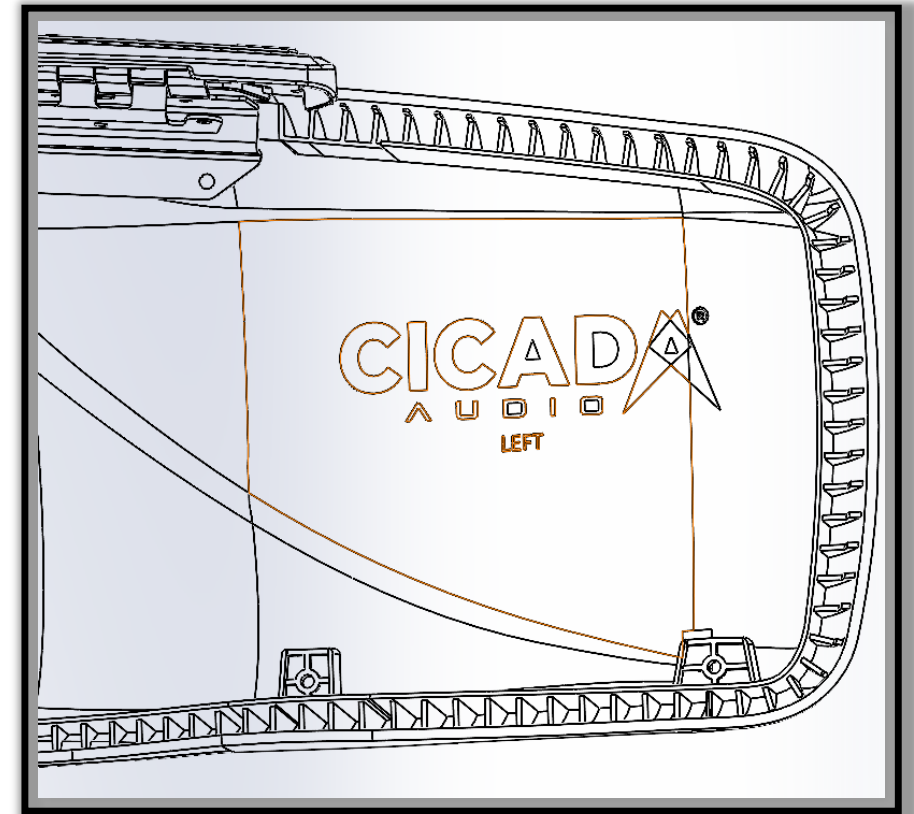


Figure 14 – Lid Gasket

TIME FOR TUNING



CICADA AUDIO
.COM

- Once Lids and saddlebags are mounted and your speakers are wired, it's time to tune!
- Set your Amplifier Gain to the Proper Output!

Let's Ride!

LIMITED WARRANTY STATEMENT

Cicada Audio warrants this product to be free of defects and quality workmanship for a period of TWO (2) year from the original date of purchase. A receipt from an authorized Cicada Audio dealer is required for warranty claim. Product warranty starts on the day of purchase or no longer than three years from the date of manufacture.

THIS WARRANTY IS NON-TRANSFERABLE AND APPLIES ONLY TO THE ORIGINAL PURCHASER OF THE PRODUCT IN THE ORIGINAL INSTALLATION.

Should a manufacturing defect occur during the warranty period, Cicada Audio will repair or replace defective product with a product of the same or equivalent value and performance. Damage or failure caused by improper use is not covered under this warranty. Negligence, improper use, product modification, unauthorized repair, accident, acts of god, dealer misrepresentation and improper or inadequate packaging during return shipment will not be covered. Warranty is void if serial numbers have been removed or defaced.

HOW TO OBTAIN WARRANTY SERVICE:

In the event a Cicada Audio product should require service, you should return to your authorized Cicada Audio retailer. All claims must follow the guidelines listed above and be returned with a copy of the original sales receipt. Product returned for warranty service must be freight prepaid, properly packaged, and clearly marked with the Return Authorization (RA) number issued by Cicada Audio. Products that are returned and are improperly packaged, do not have an RA number clearly marked on the package, or have never been issued an RA number may be refused upon delivery. Cicada does not assume responsibility for lost or mis-labelled products.

Repair or replacement under this warranty is the exclusive remedy of the consumer. Cicada Audio shall not be liable for any incidental or consequential damages for breach of any expressed or implied warranty on this product. Certain states do not allow the exclusion of limitation of incidental or consequential damages, allow limitations on how long an implied warranty lasts, so the above limitations or exclusions may not apply to you. This warranty gives you specific legal rights and you may also have other rights that may vary from state to state.

For factory service OR tech support contact:

Cicada Audio

cs@cicadaaudio.com

3757 E Broadway Road, Suite 5

Phoenix, AZ 85040

Phone: 480-887-8699



CICADA AUDIO.COM

CONTACT



3757 E. Broadway Rd. Ste. 3
Phoenix, AZ 85040



(480) 887-8699



sales@cicadaaudio.com