



Neptune™ Outdoor TV Ceiling Mount

FOR 43" TO 75" TVs

OCMUA



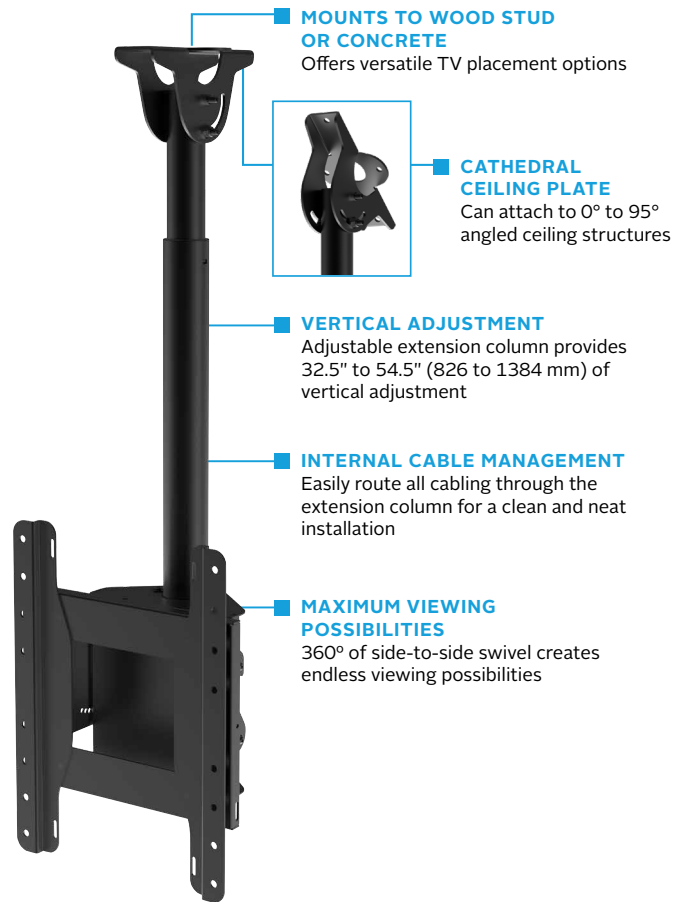
Mounting Pattern
Up to 400 x 400mm*
*Up to 600 x 400mm
with optional OWMTL



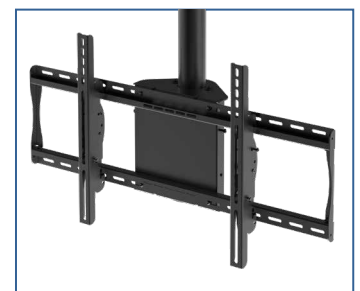
Max Load
175lb
(79.4kg)

- Corrosion-resistant design and stainless steel hardware included
- Dedicated mounting pattern accommodates 100 x 100, 200 x 100, 200 x 200, 300 x 200, 300 x 300, 400 x 200, 400 x 300 and 400 x 400mm VESA® mounting patterns (Optional OWMTL provides up to 600 x 400mm VESA® pattern, sold separately)
- IncreLok™ tilt of -5°, 0°, 5°, 10°, 15° or 20° ensures the ideal viewing area

Designed exclusively for Neptune™ Outdoor TVs, the Neptune corrosion-resistant ceiling mount is the perfect solution for wind-protected, outdoor applications. The outdoor powder coated paint and stainless steel hardware provide a proper mounting solution for areas that need corrosion protection. The cathedral ceiling plate provides flexible mounting options and the adjustable extension columns allow all cabling to be ran out of sight, through the center of the column.



Ideal for Neptune™ Outdoor TVs



Compatible with Neptune™ Outdoor Tilting TV Wall Mount (OWMTL) to Accommodate VESA® Patterns up to 600 x 400mm



RoHS
2002/95/EC

OCMUA	Neptune™ Outdoor TV Ceiling Mount for 43" to 75" TVs				
--------------	--	--	--	--	--

Product Specifications

	DIMENSIONS (W x H x D)	PRODUCT WEIGHT	LOAD CAPACITY	FINISH	AVAILABLE COLORS
OCMUA	13.04" x 32.50"-54.50" x 8.29" (331 x 826-1384 x 210mm)	32.2lb (14.6kg)	175lb (79.4kg)	Outdoor Powder Coated	Black

Package Specifications

	PACKAGE SIZE (W x H x D)	PACKAGE SHIP WEIGHT	PACKAGE UPC CODE	PACKAGE CONTENTS	UNITS IN PACKAGE
OCMUA	37.50" x 14.60" x 6.10" (953 x 371 x 155mm)	37.2lb (16.9kg)	735029359487	Mount, Mounting Hardware and Fasteners	1

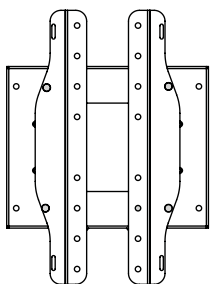
Accessories

OWMTL: Outdoor Universal Tilt Wall Mount for 32" to 75" TVs

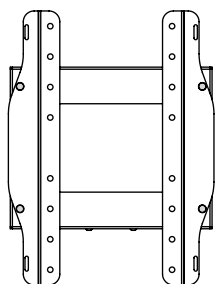
Compatible with

55" Neptune™ Outdoor TVs
65" Neptune™ Outdoor TVs

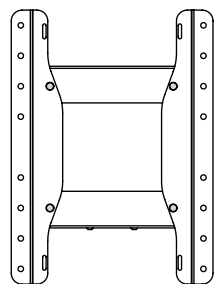
All dimensions = inch (mm)



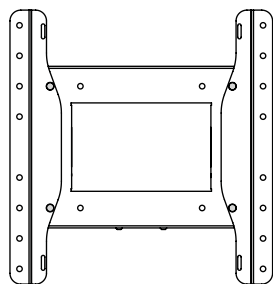
VESA 100x100 ADAPTOR DETAIL



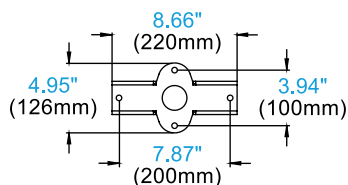
**VESA 200x100
VESA 200x200 ADAPTOR DETAIL**



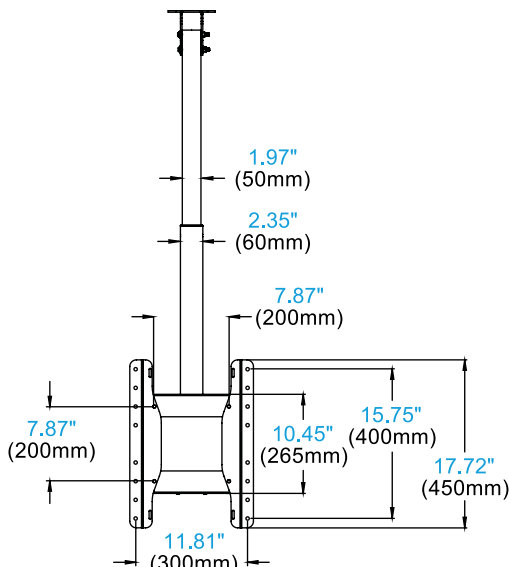
**VESA 300x200
VESA 300x300 ADAPTOR DETAIL**



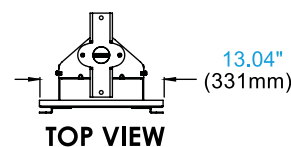
**VESA 400x200
VESA 400x300
VESA 400x400 ADAPTOR DETAIL**



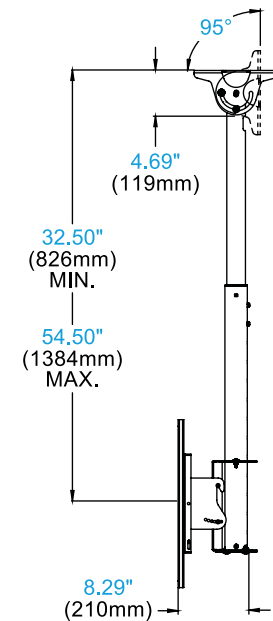
CEILING PLATE



FRONT VIEW



TOP VIEW



SIDE VIEW +20°/-5° TILT

Visit neptuneTV.com to see the complete line of outdoor AV solutions, including outdoor-rated TVs, mounts, and accessories.

Peerless-AV
2300 White Oak Circle
Aurora, IL 60502 USA

(800) 865-2112
(630) 375-5100

Peerless-AV Latin America
Av. de las Industrias 413
Parque Industrial Escobedo
General Escobedo, N.L.,
México, 66062
+52 (81) 8384-8300

