

# MD24LX

## 24" MICROWAVE DRAWER



Bring convenience into your kitchen with the Bertazzoni microwave drawer, engineered to install anywhere in the kitchen cabinets.

Enjoy the convenience of opening and closing the drawer with one touch and loading large items from the top.

Comfortably fit large size dishes and beverages in the deep white ceramic tray.

Manage the microwave by selecting power and time with the intuitive LCD display, or choose from a variety of pre-set programs such as defrost by weight, defrost by time, popcorn, beverage and many more.

### PRODUCT FEATURES

Oven type	Microwave drawer
Microwave power rating	1000 W
Microwave input	1500 W
Microwave power levels	10
User interface	Touch LCD Display
Timer	Yes
Programs	Defrost by weight, Defrost by time, Beverage, Popcorn, Melt, Soften
Drawer opening system	Motorized power drawer
Child lock	Yes
Eco function	Yes

### TECHNICAL SPECIFICATIONS

Electrical supply	120 V 60 HZ - 1500 W 15 Amps
Power connection	NEMA 5-15P with 51" power cord
Certification	UL
Warranty	2 years parts & labor
Product dimensions	W: 23 5/8" H: 16 1/16" D: 21 5/8" (without the door) Door thickness: 1 1/2"

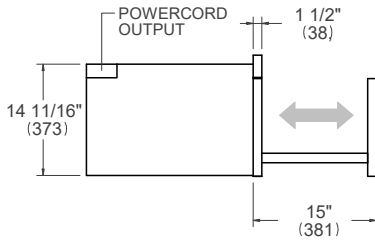
# MD24LX

## 24" MICROWAVE DRAWER

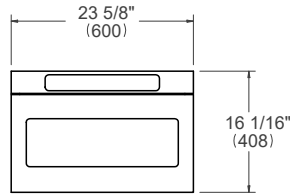


### PRODUCT DIMENSIONS

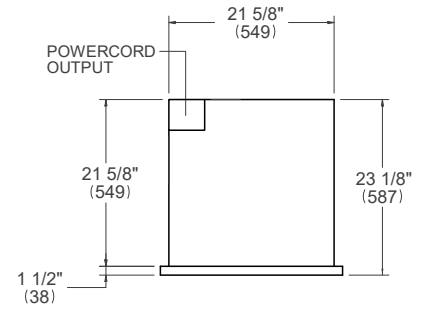
SIDE VIEW



FRONT VIEW

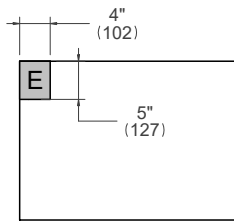


TOP VIEW



### ELECTRICAL CONNECTION

FRONT VIEW



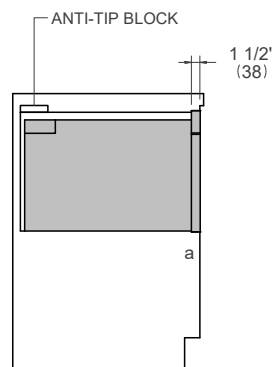
For single ovens installed into a wall cabinet, the electrical junction box may be located above, below to the left or right of the unit within reach of the power cord. Placement within the opening may require additional cabinet depth.

### INSTALLATION REQUIREMENTS

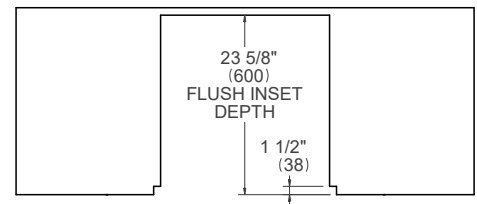
Minimum suggested load on cabinet base board is 100 lb (45 kg)

### CUTOUT DIMENSIONS

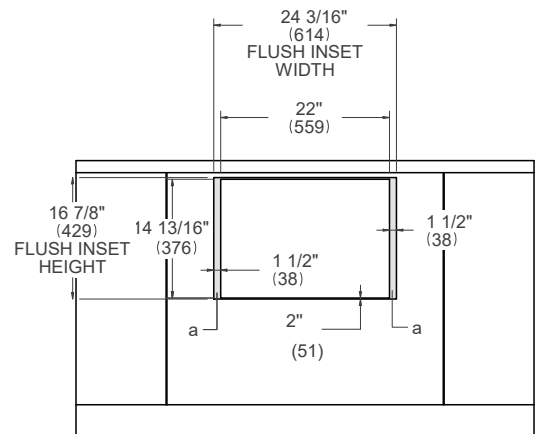
SIDE VIEW



TOP VIEW



FRONT VIEW



(a) Visible Area – Match finish to outside cabinet panels

For installation of multiple products in combination, refer to the Design Guide at [us.bertazzoni.com](http://us.bertazzoni.com) or [ca.bertazzoni.com](http://ca.bertazzoni.com)