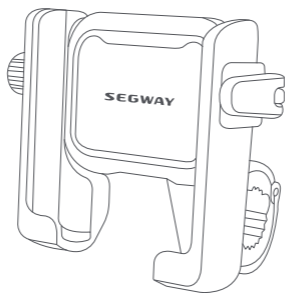




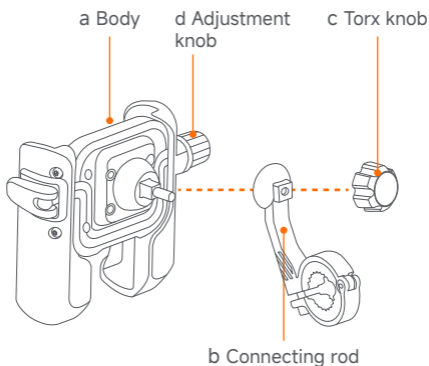
Segway Easy Clamp
Phone Holder
User Manual

Product overview

Segway Easy Clamp Phone Holder (the "phone holder") is only suitable for handlebar models with a bare pipe diameter of 22 mm. This phone holder is suitable for phones with a width of 63–90 mm (4–6.7-inch screen) and a thickness of less than 12.5 mm (the phone case included).



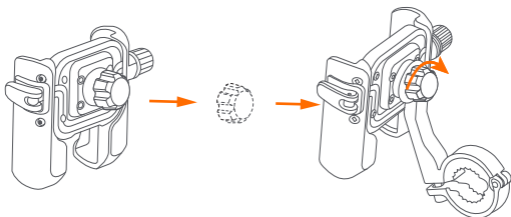
1 Schematic of product and functions



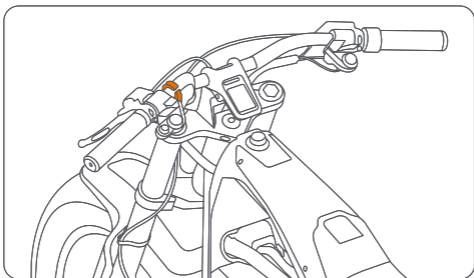
2 Installation & use

Before installing the phone holder, you need to turn off the vehicle and park it.

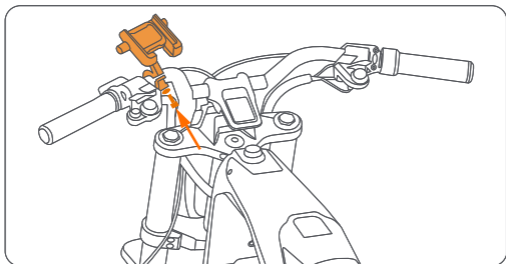
- ① Unscrew the Torx knob.
- ② Align the body with the connecting rod, and then tighten the knob.



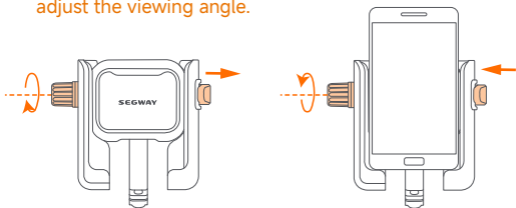
- ③ Place the clamp washer in the right place on the handlebar.



- ④ Attach the phone holder to the hoop washer and bolt it on.

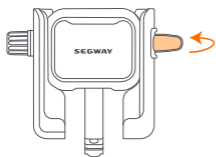


- ⑥ After installing the phone, tighten the adjustment knob to completely fix the phone (maximum unfolded width ≤ 90 mm). Release the Torx knob to adjust the viewing angle.

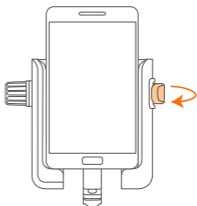


a. Rotate the left knob counterclockwise until you can put down the phone and the right lever is left locked.

b. Put in the phone and turn the knob clockwise until the phone is clamped.



c. Pull the right lever backwards, and take out the phone when the phone becomes loose;



d. Put in the phone, move the right lever forward, and clamp the phone;

3 Precautions

1. Before installing the phone holder, you need to turn off the vehicle and park it.
2. Before riding, please observe and adjust the angle of the rearview mirror again.
3. Do not use your phone during the ride to avoid accidents.

4 Product information

Product name	Segway Easy Clamp Phone Holder
Brand	Segway
Model	BD1431
Size	102 × 96 × 62.5 mm
Weight	Approx. 0.23 kg
Materials	ADC12 + ABS + PA6 + H59 + TPE
Color	Titanium crystal gray

5 After-sales services

The after-sales services of the Segway Easy Clamp Phone Holder Hoop version are strictly in accordance with the "Law of the People's Republic of China on the Protection of Consumer Rights and Interests" and the "Product Quality Law of the People's Republic of China", and the after-sales service is as follows:

Warranty period	Start date	Returns and exchanges	Warranty coverage
1-month replacements	Online: delivery date Offline: purchase date	Online: 7-day unconditional returns and 30-day exchanges; Offline: 30-day exchanges (for promotional activities or other instructions, follow the instructions);	The body is naturally cracked, and the buckle is broken during normal operation

Return and exchange requirements:

1. Intact and complete packaging: The product and packaging remain in the same condition as sold, and the accessories, gifts, etc. are intact and complete;
2. Complete documents: The receipt, user manual, bills, etc. are intact and complete;
3. Shipping fee description: For online purchases, consumers are responsible for postage for 7-day unconditional returns.

Non-guarantee clauses:

1. The packaging of the returned product is damaged, the documents are incomplete, the product does not match the purchase information, etc;
2. The warranty period or scope is exceeded;
3. Damage caused by maintenance, collision, abuse, incorrect installation, etc. without the designated authorized service outlet;
4. Damage is caused by human factors such as exposure to the sun, chemical corrosion, fire and smoke, water immersion, scratches from hard objects, and modification.

Service hotline: 400-607-0001