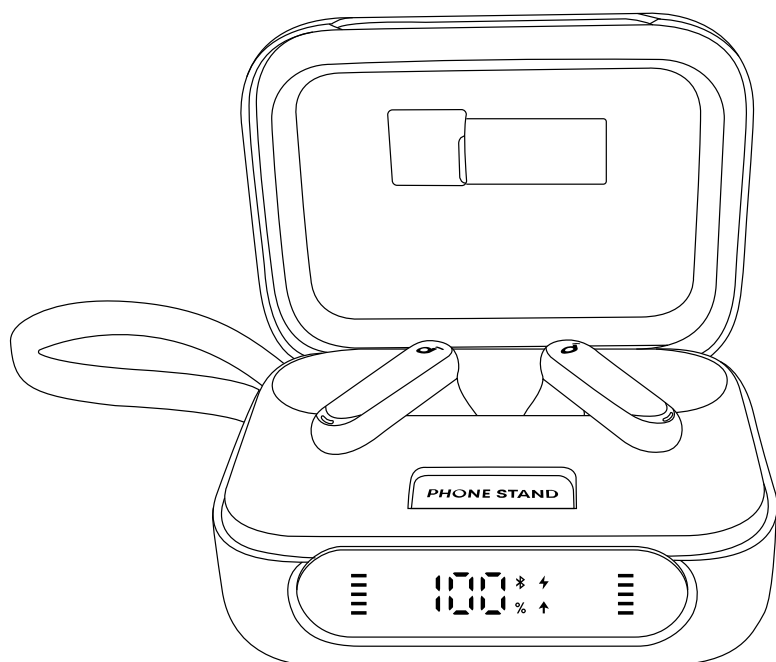
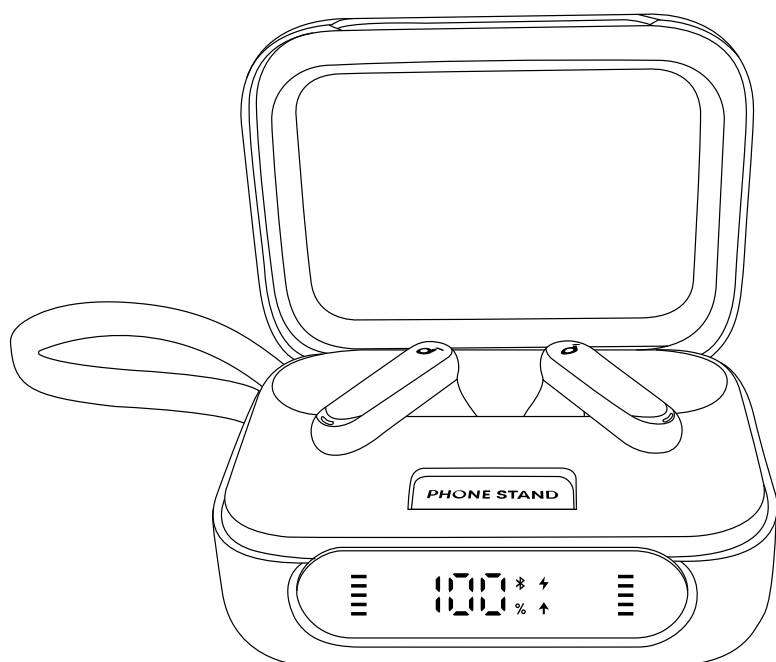


## soundcore P4i (With Lightning Adapter)



## soundcore P4i (Without Lightning Adapter)



# soundcore P4i (With Lightning Adapter)

## APP



Google Play and the Google Play logo are trademarks of Google Inc.

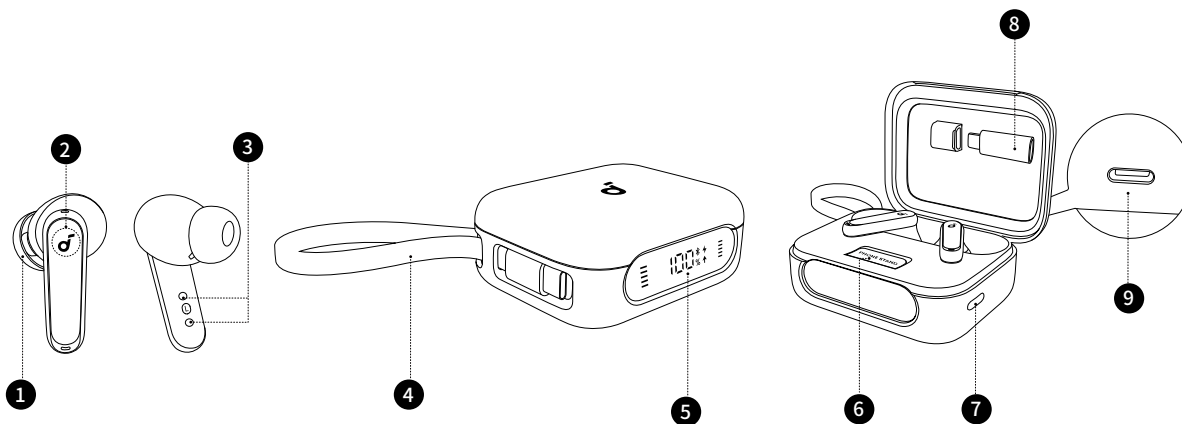


Apple and the Apple logo are trademarks of Apple Inc.



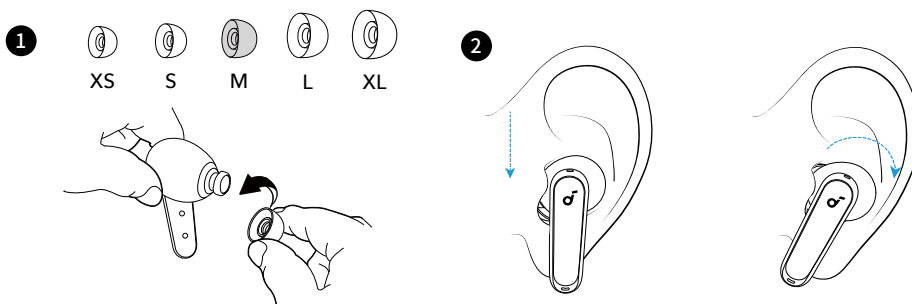
Download the soundcore app to explore the ambient sound features, EQ settings, HearID sound, firmware updates, and other exciting features. If your earbuds cannot connect to the soundcore app, try re-installing the app or updating it to the latest version available in your mobile app store.

## OVERVIEW



1. Ear Tip
  - M-size ear tips are pre-installed at the time of purchase.
2. Touch Control Area
  - Tap the control area on the earbud stems to manage different functions.
3. Charging Contacts
4. Built-in Type-C Cable
5. LED Display
6. Phone Stand
7. Charging Case Button
8. Lightning Converter
9. USB-C Charging Port
  - Charge the case via a USB-A to USB-C or USB-C to USB-C cable (not included).

## WEARING

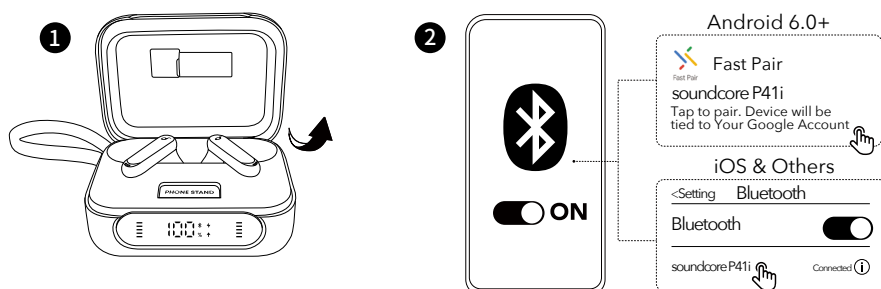


1. Try different ear tips to find the best fit.
2. Gently place the earbuds into your ear canal and rotate them until they feel snug.
3. Use the fit test in the soundcore app to ensure optimal adaptive noise cancelling performance.

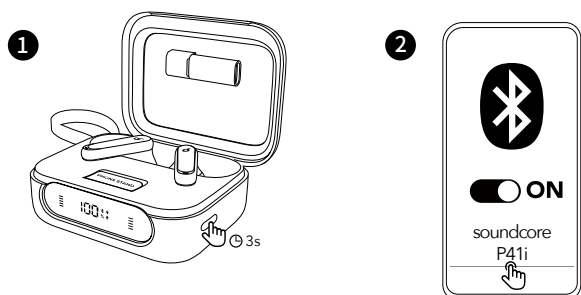


Dust, earwax, or other debris can accumulate in the earbuds. To maintain optimal sound quality, clean them regularly. Use a slightly moistened cotton swab with rubbing alcohol to gently wipe the metal mesh filter beneath the rubber ear tips. Make sure the alcohol has completely dried on the metal mesh filter before using the earbuds again.

## POWERING ON AND PAIRING

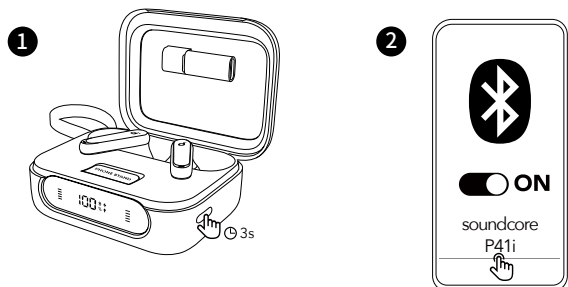


1. Open the charging case. The earbuds will power on automatically and enter Bluetooth pairing mode. Google Fast Pair: Instantly pair with your Android smartphone (running Android 6.0 or above) using Google Fast Pair.
2. Select soundcore P41i from your device's Bluetooth list to connect. Once connected, the Bluetooth icon will stay on, and the LED Display will remain lit for 30 seconds and then go off.



To manually enable Bluetooth pairing mode for future use, place the earbuds in the charging case with the lid open. Then, press and hold the charging case button for 3 seconds until the Bluetooth icon begins to flash.

## DUAL CONNECTIONS



To connect earbuds with two Bluetooth devices at the same time, there are two methods:

### Method 1: Using the soundcore App

In the soundcore app, tap on the **Settings** icon located at the upper right corner of the app's interface. Then select **Dual Connections > Enable Dual Connections > Connect New Device**.

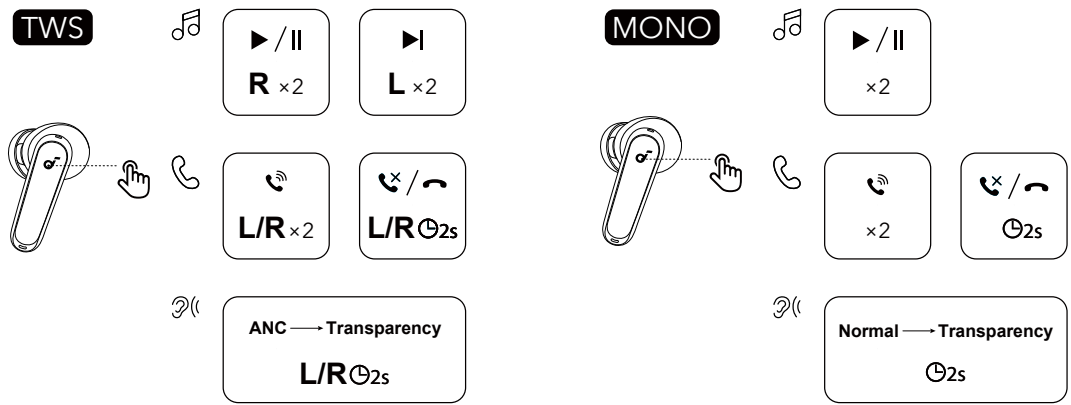
### Method 2: Manual Pairing with the Second Device

While wearing the earbuds, press and hold the touch control area on both earbuds for 3 seconds until you hear a voice prompt of entering pairing mode. Then you can proceed to pair with the second device.

Upon successful Bluetooth connection, the Bluetooth icon on the LED Display will stay on.

## CONTROLS

Note: You can customize controls in the soundcore app.

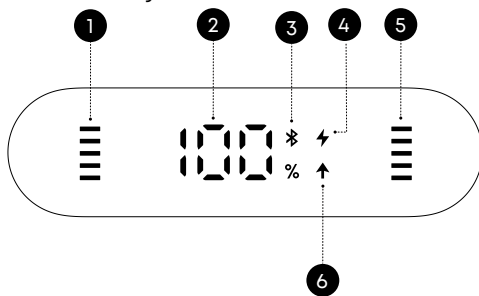


		Using Dual Earbuds	Using Single Earbud
📞	Play/Pause Audio	Tap Twice (R)	Tap Twice
	Play the Next Track	Tap Twice (L)	\
🎵	Answer a Call	Tap Twice (L/R)	Tap Twice
	Reject/End a call	Tap and Hold for 2 Seconds (L/R)	Tap and Hold for 2 Seconds
👂	Switch Between Ambient Sound Modes	Tap and Hold for 2 Seconds (L/R)	Tap and Hold for 2 Seconds

## LED DISPLAY GUIDE

The LED Display on the charging case will illuminate under the following conditions: when you open or close the lid, place the earbuds back into the case, press the charging case button, charge the case, or use the built-in USB-C cable to charge your smartphone.

If no activity is detected for 30 seconds, the LED Display will automatically turn off.



### Display Icons

NO	Description
1	Battery Level of the Left Earbud • When the earbud is in low battery, the only red bar will keep flashing.
2	Battery Level of the Case
3	Bluetooth Connection Indication • Flashing: Bluetooth Pairing • Still: Bluetooth Connected
4	Case being Charged • Flashing: Charging in Progress • Still: Charging Completed
5	Battery Level of the Right Earbud • When the earbud is in low battery, the only red bar will keep flashing.
6	Smartphone being Charged



When the case is fully charged, the LED Display will go off after 30 seconds.

## Bluetooth Pairing



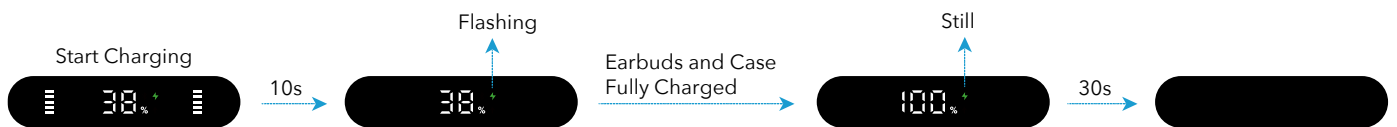
## Dual Connections



## Emergency Phone Charging



## Earbuds and Case Charging

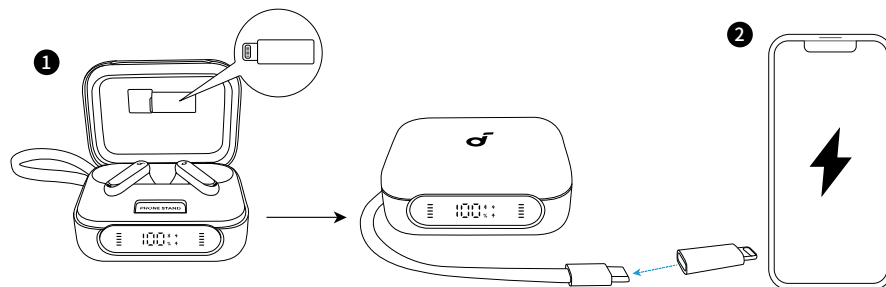


## AMBIENT SOUND

In the soundcore app, you can select from Adaptive Noise Cancellation, normal, or transparency mode.

- Adaptive Noise Cancellation: Optimizes noise cancellation by adjusting to your ears and environment.
- Normal: Enjoy balanced sound without noise cancellation.
- Transparency: Hear ambient sounds clearly while enjoying music.

## EMERGENCY PHONE CHARGING



To use the emergency charging feature, follow these steps:

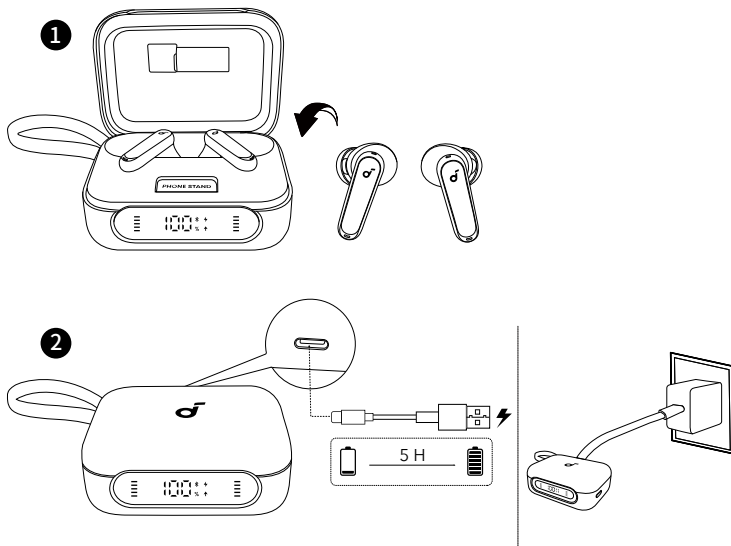
- **For Type-C interface phones:** Simply connect the charging case's USB-C cable directly to your phone. Once connected, the screen will light up with a charging icon, indicating that charging has started.
- **For iPhones with Lightning interface:** Open the top cover of the charging case, take out the Lightning Adapter, and attach it to the USB-C cable. Then, plug the cable into your iPhone. The screen will light up with a charging icon to indicate that charging has started.

Additionally, you can press the charging case button once to light up the screen and check the charging status.



When the battery level of the charging case is 10% or lower, it will stop charging the phone. Charging other devices may result in malfunction.

## EARBUDS AND CASE CHARGING

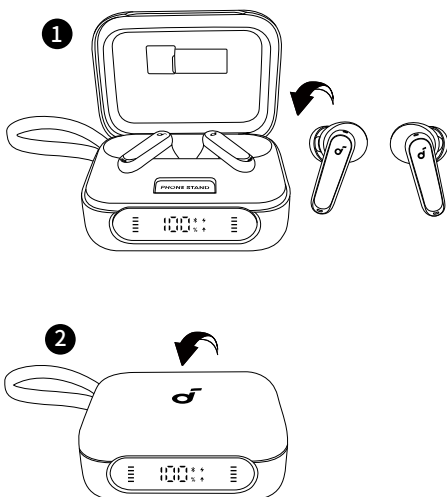


1. Ensure the earbuds and the USB-C charging port are completely dry before charging. Place the earbuds in the charging case and close it.
2. There are three ways to charge the case:
  - **Using a USB-A to USB-C cable:** Connect the charging case to a power supply using a USB-A to USB-C cable (not included in the package).
  - **Using a USB-C to USB-C cable:** Insert a USB-C to USB-C cable (not included in the package) into the USB-C port on the charging case and connect it to a power supply.
  - **Using the built-in USB-C cable:** Plug the built-in USB-C cable into an adapter to charge the case.A full recharge for the case and earbuds takes 5 hours. Charging the earbuds for 10 minutes provides 5 hours of playtime.



When the battery level of the charging case drops to 10% or below, the battery level indication will flash 10 times everytime the LED Display lights up.

## POWERING OFF

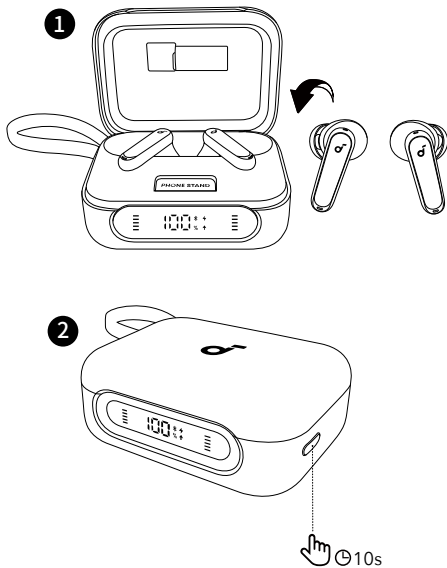


To power off, return both earbuds to the charging case and close it.



When removed from the case, the earbuds automatically power off after 30 minutes if not connected to any device. The duration can be set in the soundcore app.

## RESET



Place the earbuds in the charging case with the lid open. Press and hold the charging case button for 10 seconds.

Upon a successful reset, the earbuds will re-enter Bluetooth pairing mode. At this time, the Bluetooth icon on the LED Display will start flashing.

## FIRMWARE UPDATE

You will be notified once a new firmware version of the earbuds or charging case is detected when the earbuds are connected to the app. Ensure the earbuds are placed in the charging case and the case remains open until the firmware update is complete. During the update, ensure the battery levels of both the earbuds and the charging case are above 20%, and avoid any usage.

## SPECS

Note: Specifications are subject to change without notice.

Input	USB-C (Receptacle) Input: 5V $\overline{\text{---}}$ 2.4A USB-C (Plug) Input: 5V $\overline{\text{---}}$ 1A
Rated Output Power	10mW
Battery Capacity	60mAh $\times$ 2 (Earbuds) 3000mAh (Charging Case)
Charging Time	Up to 1 Hour (Earbuds) Up to 5 Hours (Charging Case with Earbuds)
Playtime (ANC Off)	Up to 12 Hours (Up to 192 hours with Case)
Playtime (ANC On)	Up to 10 Hours (Up to 160 hours with Case)
Driver	11mm Dynamic Driver
Frequency Response	20Hz-20kHz
Impedance	14 $\Omega$
Waterproof and Dustproof Level (Earbuds)	IPX5
Bluetooth Version	Bluetooth 5.3
Bluetooth Range	10m

# soundcore P4i (Without Lightning Adapter)

## APP



Google Play and the Google Play logo are trademarks of Google Inc.

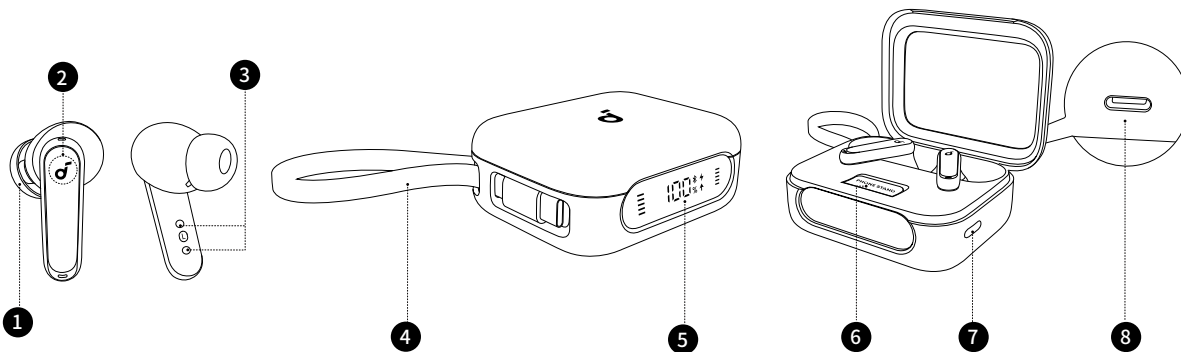


Apple and the Apple logo are trademarks of Apple Inc.



Download the soundcore app to explore the ambient sound features, EQ settings, HearID sound, firmware updates, and other exciting features. If your earbuds cannot connect to the soundcore app, try re-installing the app or updating it to the latest version available in your mobile app store.

## OVERVIEW



### 1. Ear Tip

- M-size ear tips are pre-installed at the time of purchase.

### 2. Touch Control Area

- Tap the control area on the earbud stems to manage different functions.

### 3. Charging Contacts

### 4. Built-in USB-C Cable

### 5. LED Display

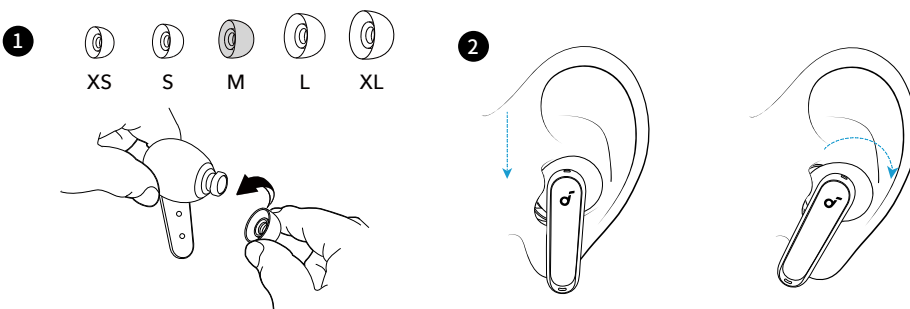
### 6. Phone Stand

### 7. Charging Case Button

### 8. USB-C Charging Port

- Charge the case via a USB-A to USB-C cable (not supplied).

## WEARING



### 1. Try different ear tips to find the best fit.

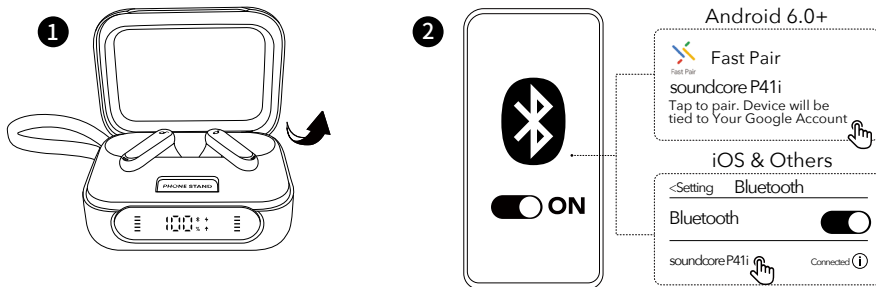
### 2. Gently place the earbuds into your ear canal and rotate them until they feel snug.

### 3. Use the fit test in the soundcore app to ensure optimal adaptive noise cancelling performance.



Dust, earwax, or other debris can accumulate in the earbuds. To maintain optimal sound quality, clean them regularly. Use a slightly moistened cotton swab with rubbing alcohol to gently wipe the metal mesh filter beneath the rubber ear tips. Make sure the alcohol has completely dried on the metal mesh filter before using the earbuds again.

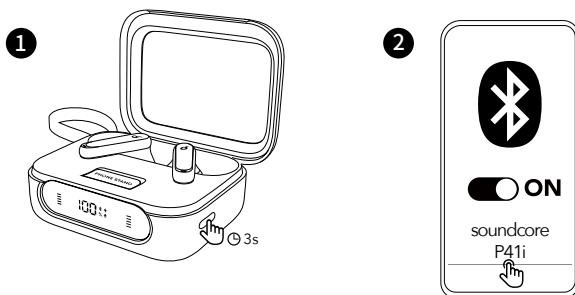
## POWERING ON AND PAIRING



1. Open the charging case. The earbuds will power on automatically and enter Bluetooth pairing mode.

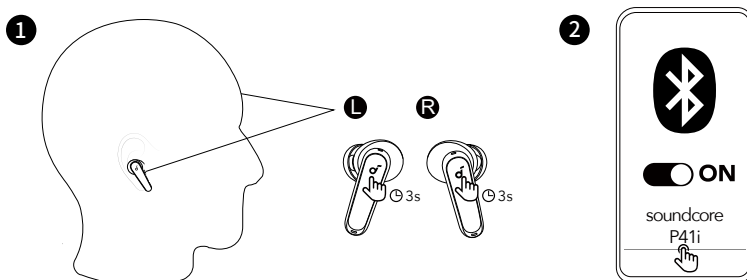
**Google Fast Pair:** Instantly pair with your Android smartphone (running Android 6.0 or above) using Google Fast Pair.

2. Select **soundcore P41i** from your device's Bluetooth list to connect. Once connected, the Bluetooth icon will stay on, and the LED Display will remain lit for 30 seconds and then go off.



To manually enable Bluetooth pairing mode for future use, place the earbuds in the charging case with the lid open. Then, press and hold the charging case button for 3 seconds until the Bluetooth icon begins to flash.

## DUAL CONNECTIONS



To connect earbuds with two Bluetooth devices at the same time, there are two methods:

### Method 1: Using the soundcore App

In the soundcore app, tap on the **Settings** icon located at the upper right corner of the app's interface. Then select **Dual Connections > Enable Dual Connections > Connect New Device**.

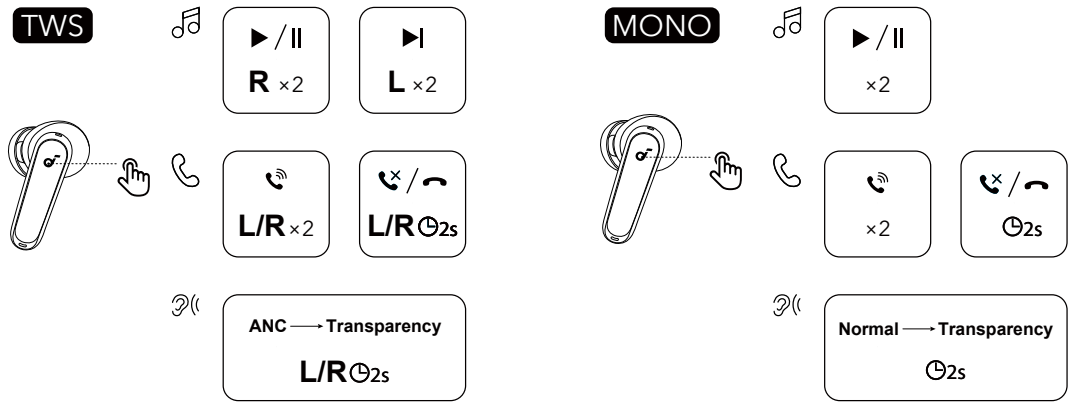
### Method 2: Manual Pairing with the Second Device

While wearing the earbuds, press and hold the touch control area on both earbuds for 3 seconds until you hear a voice prompt of entering pairing mode. Then you can proceed to pair with the second device.

Upon successful Bluetooth connection, the Bluetooth icon on the LED Display will stay on.

## CONTROLS

Note: You can customize controls in the soundcore app.

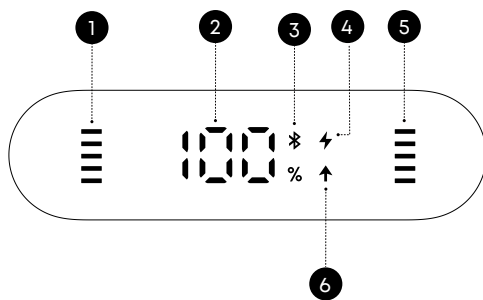


		Using Dual Earbuds	Using Single Earbud
📞	Play/Pause Audio	Tap Twice (R)	Tap Twice
	Play the Next Track	Tap Twice (L)	\
🎵	Answer a Call	Tap Twice (L/R)	Tap Twice
	Reject/End a call	Tap and Hold for 2 Seconds (L/R)	Tap and Hold for 2 Seconds
🔊	Switch Between Ambient Sound Modes	Tap and Hold for 2 Seconds (L/R)	Tap and Hold for 2 Seconds

## LED DISPLAY GUIDE

The LED Display on the charging case will illuminate under the following conditions: when you open or close the lid, place the earbuds back into the case, press the charging case button, charge the case or use the built-in USB-C cable to charge your smartphone.

If no activity is detected for 30 seconds, the LED Display will automatically turn off.



### Display Icons

NO.	Description
1	Battery Level of the Left Earbud • When the earbud is in low battery, the only red bar will keep flashing.
2	Battery Level of the Case
3	Bluetooth Connection Indication • Flashing: Bluetooth Pairing • Still: Bluetooth Connected
4	Case being Charged • Flashing: Charging in Progress • Still: Charging Completed
5	Battery Level of the Right Earbud • When the earbud is in low battery, the only red bar will keep flashing.
6	Smartphone being Charged



When the case is fully charged, the LED Display will go off after 30 seconds.

### Bluetooth Pairing



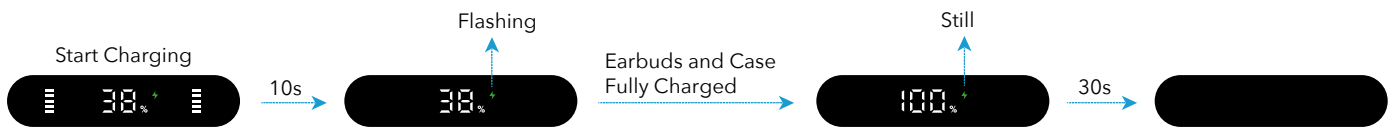
### Dual Connections



### Emergency Phone Charging



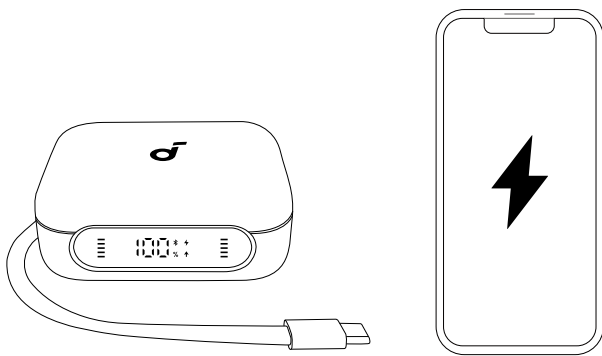
### Earbuds and Case Charging



## AMBIENT SOUND

- In the soundcore app, you can select from Adaptive Noise Cancellation, normal, or transparency mode.
- Adaptive Noise Cancellation: Optimizes noise cancellation by adjusting to your ears and environment.
  - Normal: Enjoy balanced sound without noise cancellation.
  - Transparency: Hear ambient sounds clearly while enjoying music.

## EMERGENCY PHONE CHARGING



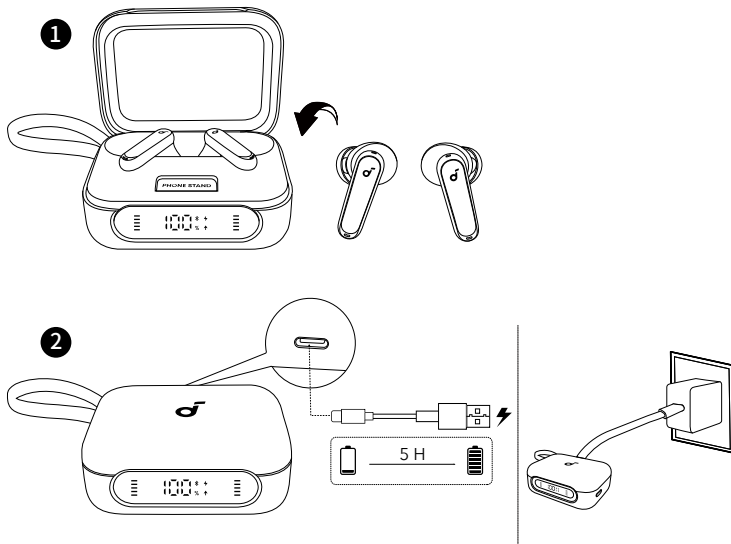
To use the emergency charging feature, simply connect the charging case's USB-C cable directly to your phone. Once connected, the screen will light up with a charging icon, indicating that charging has started.

Additionally, you can press the charging case button once to light up the screen and check the charging status.



- When the battery level of the charging case is 10% or lower, it will stop charging the phone.
- Charging other devices may result in malfunction.

## EARBUDS AND CASE CHARGING

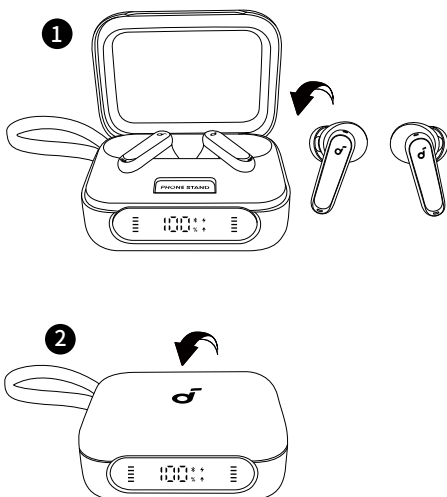


1. Ensure the earbuds and the USB-C charging port are completely dry before charging. Place the earbuds in the charging case and close it.
2. There are three ways to charge the case:
  - **Using a USB-A to USB-C cable:** Connect the charging case to a power supply using a USB-A to USB-C cable (not included in the package).
  - **Using a USB-C to USB-C cable:** Insert a USB-C to USB-C cable (not included in the package) into the USB-C port on the charging case and connect it to a power supply.
  - **Using the built-in USB-C cable:** Plug the built-in USB-C cable into an adapter to charge the case.A full recharge for the case and earbuds takes 5 hours. Charging the earbuds for 10 minutes provides 5 hours of playtime.



When the battery level of the charging case drops to 10% or below, the battery level indication will flash 10 times everytime the LED Display lights up.

## POWERING OFF

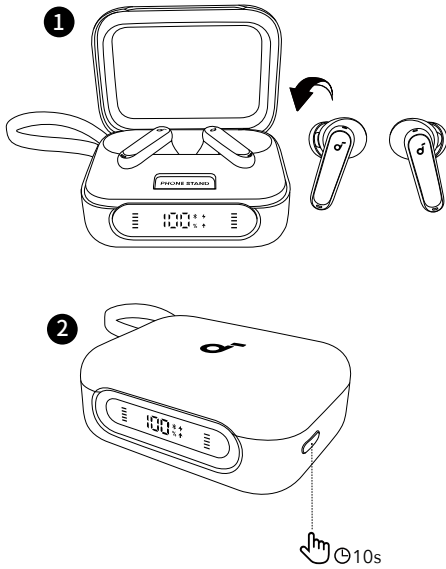


To power off, return both earbuds to the charging case and close it.



When removed from the case, the earbuds automatically power off after 30 minutes if not connected to any device. The duration can be set in the soundcore app.

## RESET



Place the earbuds in the charging case with the lid open. Press and hold the charging case button for 10 seconds.

Upon a successful reset, the earbuds will re-enter Bluetooth pairing mode. At this time, the Bluetooth icon on the LED Display will start flashing.

## FIRMWARE UPDATE

You will be notified once a new firmware version of the earbuds or charging case is detected when the earbuds are connected to the app. Ensure the earbuds are placed in the charging case and the case remains open until the firmware update is complete. During the update, ensure the battery levels of both the earbuds and the charging case are above 20%, and avoid any usage.

## SPECS

Note: Specifications are subject to change without notice.

Input	USB-C (Receptacle) Input: 5V $\overline{=}$ 2.4A USB-C (Plug) Input: 5V $\overline{=}$ 1A
Rated Output Power	10mW
Battery Capacity	60mAh $\times$ 2 (Earbuds) 3000mAh (Charging Case)
Charging Time	Up to 1 Hour (Earbuds) Up to 5 Hours (Charging Case with Earbuds)
Playtime (ANC Off)	Up to 12 Hours (Up to 192 hours with Case)
Playtime (ANC On)	Up to 10 Hours (Up to 160 hours with Case)
Driver	11mm Dynamic Driver
Frequency Response	20Hz-20kHz
Impedance	14 $\Omega$
Waterproof and Dustproof Level (Earbuds)	IPX5
Bluetooth Version	Bluetooth 5.3
Bluetooth Range	10m

## CUSTOMER SERVICE



service@soundcore.com  
support.mea@soundcore.com (For Middle East and Africa Only)  
support@anker.com (日本)  
support.kr@anker.com (한국)



+1 (800) 988 7973 (US/Canada)  
+44 (0) 1604 936200 (UK)  
+49 (0) 69 9579 7960 (DE)  
03 4455 7823 (日本)  
+86 400 0550 036 (中国)  
+82 1666-8470 (한국)  
+971 8000320817 (UAE)  
+966 8008500030 (KSA)  
+965 22069086 (Kuwait)  
+20 8000000826 (Egypt)  
+90 (850) 460 14 14 (Türkiye)  
+8 (800) 511-86-23 (Russia)  
000-8000-504-414 (India)

Note: The 'x' of SN Code: xxxxxxxxxxxxxxxx is a variable, see below table.

Variable 'x'	Range of variable	Content
Eighth	8,9,A,B,C...	Denotes the year, 8 means 2018, 9 means 2019, A means 2020, B means 2021, C means 2022, and so on.
Ninth and tenth	01,02,03...	Denotes weeks, 01 means the first week in this year, 02 means the secondary week in this year, and so on.
Eleventh	1-7	Denotes date, 1 means Monday, 2 means Tuesday..., 7 means Sunday and so on.
The last five	00001-99999	Denotes serial No.

Hereby, Anker Innovations Limited declares that this device is in compliance with The Product Security and Telecommunications Infrastructure (Security Requirements for Relevant Connectable Products) Regulations 2023. For the Statement of Compliance, visit the website:  
<https://uk.soundcore.com/pages/psti-related>.

1. Power consumption in standby mode:  $\leq 0.5W$
2. Powermanagement:  $\leq 20min$
3. Information of applicable adapter:  
Brand: ANKER  
Manufacturer: Anker Innovations Limited  
Model: A2337  
Input: 100-240Vac, 1A, 50-60Hz  
Output: 5V  $\equiv$  3A / 9V  $\equiv$  3A / 12V  $\equiv$  2.5A / 15V  $\equiv$  2A / 20V  $\equiv$  1.5A (30W Max)

Default Open Port: Classic Bluetooth

Port Description: After the device is powered on, Classic Bluetooth visibility (or pairing mode) is automatically enabled, providing Bluetooth pairing (or control) services. The Bluetooth service is disabled when the device is powered off.