

AT-LPA2

User Manual (Online Manual)
<https://www.audio-technica.co.jp/document/AT-LPA2/Default.html>



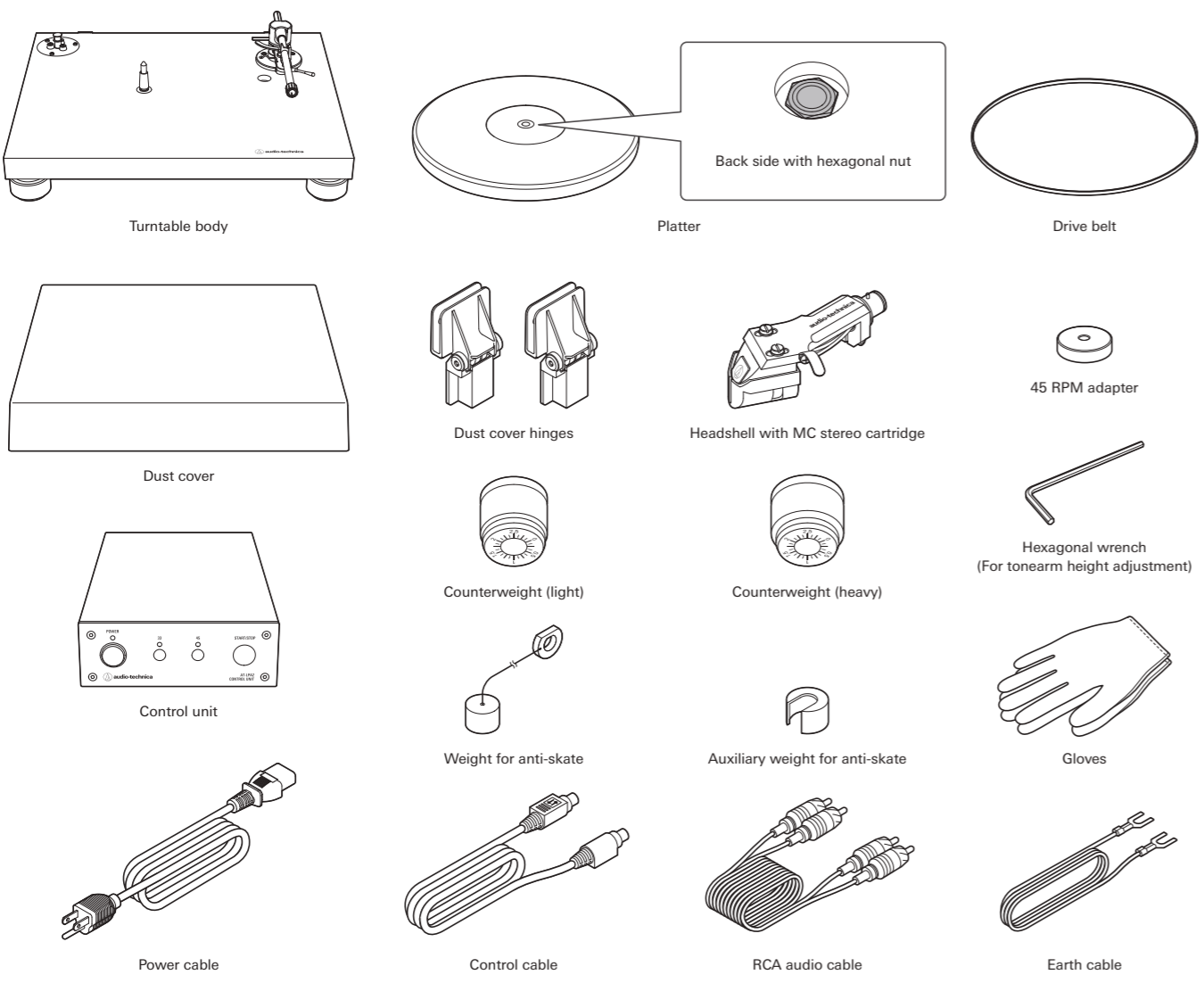
Audio-Technica Corporation
 2-46-1 Nishi-naruse, Machida, Tokyo 194-8666, Japan
www.audio-technica.com
 ©2025 Audio-Technica Corporation
 Global Support Contact: www.at-globalsupport.com

351718580-01-02

ver.1 2024.11.01
 ver.2 2025.02.15

- Quick Start Guide**
 Belt-Drive Turntable
- Guide de démarrage rapide**
 Tourne-disque à entraînement par courroie
- Kurzanleitung**
 Riemenbetriebener Plattenspieler
- Guida rapida**
 Giradischi
- Guía de inicio rápido**
 Giradiscos de tracción por correa
- Guia de início rápido**
 Toca-discos acionado por correia
- Краткое руководство по установке**
 Проигрыватель с ременным приводом
- 快速启动指南**
 皮带传动唱盘机
- 快速入門指南**
 皮带驅動式黑膠唱機
- 간편 사용 설명서**
 벨트 드라이브 턴테이블

Contents

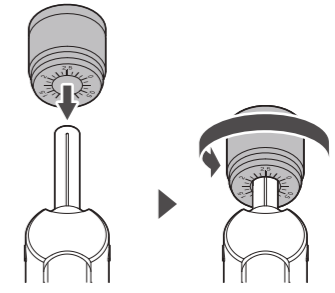


! For information about items included in the package that are not explained in the quick start guide, refer to the user manual on our website.

Preparation

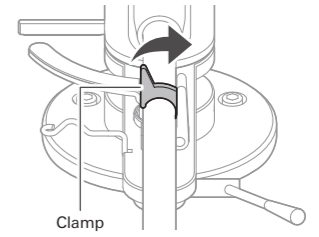
- Attach the drive belt to the side of the platter.
- Use the included gloves to avoid fingerprints on the turntable, and then remove the protective sheets from the platter and turntable body.
- With the turntable turned off, set the platter.
- Attach the drive belt to the motor pulley.
- Level the turntable.
- Attach the headshell into the tonearm, and remove the cartridge's protector.

7 Attach the counterweight (light) to the back of the tonearm, and slowly turn it counterclockwise (to the left).

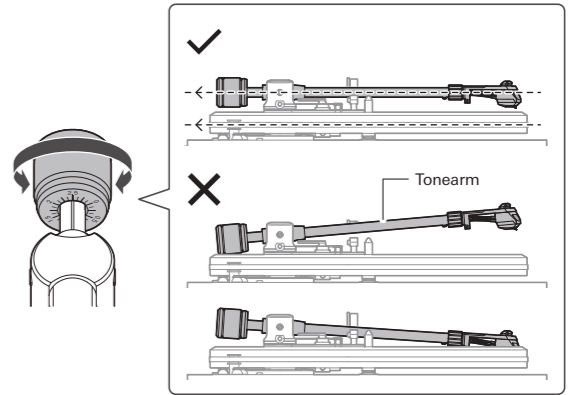


! Refer to the user manual on our website for information on using the counterweight (heavy).

8 Unlatch the clamp.

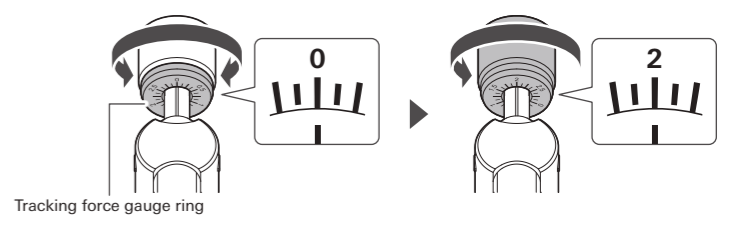


9 Turn the counterweight to adjust the tonearm's balance so that the tonearm is level when you release the headshell.

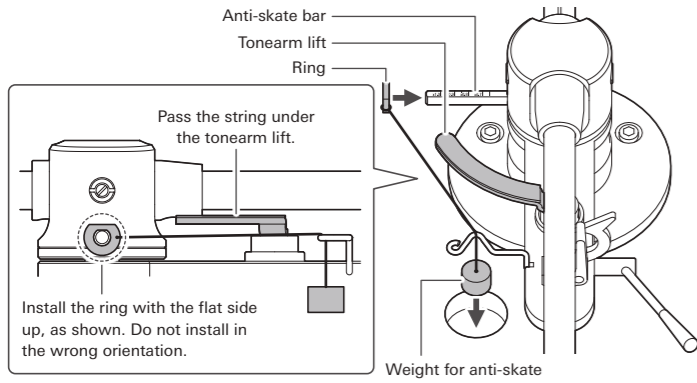


! Make sure that the stylus tip does not touch the platter or turntable body.

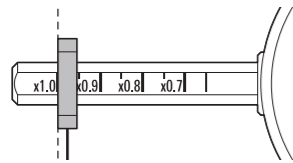
10 Set the tracking force gauge ring to the "0" position. After that, turn the counterweight and the tracking force gauge ring together counterclockwise (to the left) to the "2" position.



11 Place the weight for anti-skate in the indentation on the turntable body and slide the ring onto the anti-skate bar.



12 Set the position of the anti-skate bar to "1.0", which is the magnification factor of the weight for anti-skate (2.0 g) to the counterweight setting value.

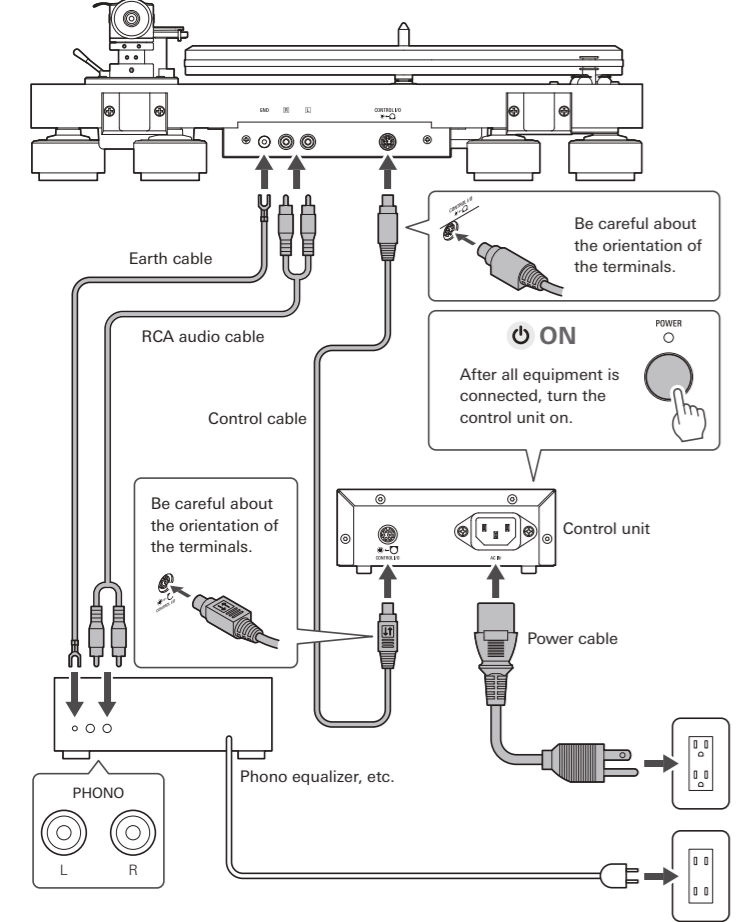


! For information on the magnification of the anti-skate bar, and when using a cartridge other than the one included, refer to the user manual on our website.

Connection

Connect the turntable to the PHONO input of a phono equalizer or an amplifier with a built-in phono equalizer. The product comes with an MC cartridge, therefore a phono equalizer that is compatible with MC cartridges or an MC transformer is necessary.

Connect the turntable and control unit.



Play

- 1** Remove the cartridge's protector.
- 2** Place the record on the platter.
 - At 33-1/3 RPM
 - At 45 RPM

- 3** Turn the control unit on, and select the speed.
 - At 33-1/3 RPM
 - At 45 RPM

- 4** Press the START/STOP button to rotate the platter.
- 5** Raise the tonearm by lifting the tonearm lift control lever to the UP position.

6 Position the tonearm over the desired location (groove) on the record.

7 Lower the tonearm by moving the tonearm lift control lever to the DOWN position.

Stop

- 1** Lower the volume of the connected device (amplifier, etc.).
- 2** Raise the tonearm by lifting the tonearm lift control lever to the UP position.
- 3** Return the tonearm to the tonearm rest.

4 Lower the tonearm by moving the tonearm lift control lever to the DOWN position and fix it with the clamp.

5 Press the START/STOP button to stop the platter.

6 Attach the cartridge's protector.

7 Turn the control unit off.

Cleaning

After turning the control unit off and unplugging the power cable from the outlet, clean the turntable as necessary. For details about turntable and cartridge care accessories, visit <https://www.audio-technica.com>.

